

The Guthrie Clinic (North) Property Citizen Participation Plan

NYSDEC Project ID 851062

Corning, New York

August 2021

Contents

1.0 Introduction and Overview	1-1
2.0 Background and Project Description	2-1
2.1 The Guthrie Clinic (North) Property History.....	2-1
2.2 Project Description.....	2-2
3.0 Citizen Participation Activities	3-1
3.1 Document Repository	3-1
3.2 Mailing List	3-1
3.3 Points of Contact.....	3-2
3.4 Website	3-3
3.5 Summaries of Technical Reports	3-3
3.6 Public Notices	3-3
3.7 Public Comment Periods and Comment Responses	3-3
3.8 Meetings.....	3-3
3.9 Media Notification	3-4
3.10 Elected State and Federal and Local Officials Briefings	3-4
3.11 Revise the CP Plan.....	3-4
4.0 References	4-1

List of Appendices

Appendix A Project Contacts

Appendix B Document Repositories

Appendix C List of Available Documents

Appendix D Project Contact List

Appendix E Glossary

Appendix F The Guthrie Clinic (North) Property Map

1.0 Introduction and Overview

This document presents the Citizen Participation (CP) Plan for The Guthrie Clinic (North) property located in the City of Corning, New York that is an approximately 1.3-acre portion of Tax Map ID: 318.05-02-002.000 (the “Real Property”). The Real Property is depicted on the map attached as Appendix “F”.

In August 2021, Corning Incorporated and the New York State Department of Environmental Conservation (NYSDEC) entered into an Order on Consent and Administrative Settlement (Order) to investigate the Real Property, including conducting *The Guthrie Clinic (North) Characterization Work Plan* (the Work Plan; AECOM 2020), which is attached to, and incorporated into, the Order. The Order also requires the development of a CP Plan for the Real Property, in accordance with New York Environmental Conservation Law (ECL) §27-1417 and Title 6 of the New York Codes Rules and Resolutions (6 NYCRR) sections 375-1.10 and 375-3.10. Corning is committed to informing and involving the public during the course of the remedial work to be conducted under the Order, and will work with the NYSDEC and the New York State Department of Health (NYSDOH) to accomplish this goal. This CP Plan describes the minimum CP activities to be conducted during the environmental study; additional community outreach may also occur based on NYSDEC requirements or community feedback.

2.0 Background and Project Description

In 2015, the NYSDEC classified the Real Property as a State Superfund Program Classification P (potential) site. The Real Property was classified as a P site based upon “anecdotal reporting by multiple residents in the area that large quantities of glass waste were excavated during the construction of the Guthrie Medical Center building in the late 1980s” in conjunction with the surrounding area being a low-lying area “extensively filled from the 1930s, or earlier, to the early 1960s.” (NYSDEC, 2015)

2.1 The Guthrie Clinic (North) Property History

The Guthrie Clinic (North) Property is located at 130 Center Way in Corning, Steuben County, New York. The Corning Guthrie Medical Center provides primary care physicians and services specialized in family and internal medicine. Corning Incorporated, which was formerly known as Corning Glass Works, historically owned the Guthrie Clinic (North) Property.

The City of Corning has a long history of manufacturing, particularly in brick and glassmaking. Historical references indicate that, in the late 1800s and early 1900s, one of the country’s largest brick manufacturers and more than sixty glass manufacturers were located in the City of Corning, including Corning Incorporated, which was formerly known as Corning Glass Works (Dimitroff, 2001; Sinclair & Spillman, 1997). During that time frame, coal was the primary fuel source in the Corning, New York, area, and most of the local industries and municipalities used coal to heat their furnaces. In the early 1900s, when natural gas was introduced to the region, some industries converted their fuel sources to natural gas.

Between 1949 and at least 1968, the City of Corning operated a municipal incinerator that created significant volumes of ash. Historical City Council meeting minutes indicate that the City applied ash and cinders to roadways within the City to control ice during, at least, the mid-1950s. (City of Corning, 1936; 1941; 1958; 1959).

Several times during the City of Corning’s history, the Chemung River overflowed its banks. This resulted in construction and improvement of flood control structures on multiple occasions, including in the mid-1940’s and again after Hurricane Agnes in the mid-1970’s, according to NYSDEC and U.S. Army Corps of Engineers records (USACE, 1941). Such construction efforts would have likely required the import of significant volumes of material of uncertain origin, the removal or relocation of material deemed unsuitable as a foundation for earthworks, the creation and filling of borrow areas from which soils suitable for construction were obtained, as well as other potential grading and filling activities. These activities occurred surrounding the Real Property, including along the Chemung River (USACE, 1941; USACE, 1973). The land use within the Real

Property has developed over time from farmland, to residential apartment buildings and eventually into the current use, a medical clinic.

2.2 Project Description

Corning Incorporated has retained an experienced expert technical consultant, AECOM to implement an environmental study of the Real Property in accordance with the NYSDEC-approved Work Plan (AECOM, 2020). The study will assess the nature and extent of fill material that may be encountered within the Real Property and evaluate potential exposure pathways completing soil borings in areas where this fill may be identified with a thorough visual inspection and reporting of the materials encountered; collecting surface and subsurface soil samples for analytical testing; and installing and sampling groundwater monitoring wells. After the sampling is complete, Corning Incorporated will report the findings and work with the NYSDEC, NYSDOH, and the property owner to determine whether any further action is necessary.

3.0 Citizen Participation (CP) Activities

This section describes the CP program for the Real Property. The program meets the requirements set forth in NYSDEC Program Policy No. 23, the Citizen Participation Handbook for Remedial Programs. The program will be implemented by Corning Incorporated, with oversight and input from the NYSDEC and NYSDOH. The following paragraphs describe the required or suggested minimum CP activities for the project; additional CP activities may be considered based on community feedback.

3.1 Document Repository

A document repository is a file of documents pertaining to the Real Property and the associated citizen participation programs, which is made available for public review. The file is typically maintained in a nearby public building to provide access at times and a location convenient to the public.

For the Real Property, document repositories will be established, and will include the following documents, as available:

- Consent Order
- CP Plan
- Fact Sheets
- The Guthrie Clinic (North) Characterization Work Plan
- Other materials (e.g., information sheets, notices, etc.)

Two repositories will be established for the Real Property: (1) the Southeast Steuben County Library, and (2) the NYSDEC Regional Office. The addresses for these repositories are listed in Appendix B.

3.2 Mailing List

A key element of the CP Plan is a mailing list of stakeholders, the community, and interested citizens in an area. Direct mailings of information allow people to review the information provided at their convenience (i.e., rather than in a public forum). These mailings also facilitate the distribution of information to everyone who needs or wants information about the project.

A mailing list has been established for the Real Property (referred to as the Project Contact List), which is composed of two components:

- The owner of the Real Property, and
- Other interested parties.

The contact information for interested parties (second bullet) is provided in Appendix D; property owner contact information is maintained confidentially in project files. Corning Incorporated will maintain and update the mailing list information regularly throughout the project.

3.3 Points of Contact

Several points of contact have been established for the project. The public is encouraged to contact any of the project staff listed below.

Technical Information:

Jenelle Gaylord
NYS Department of Environmental Conservation
Division of Environmental Remediation
625 Broadway
Albany, NY 12233
Phone: (518) 402-9791
Email: jenelle.gaylord@dec.ny.gov

The Guthrie Clinic (North) Property -Related Health Information:

John Robinson
Public Health Specialist II - Bureau of Environmental Exposure Investigation
New York State Department of Health
Empire State Plaza – Corning Tower Room #1787
Albany, NY 12237
Desk Phone: 518.402.7881
Fax: 518.402.7859
Email: johnathan.robinson@health.ny.gov

Citizen Participation:

Jill M. Bishop
Agency Program Aide & Region 8 FOIL Coordinator, Office of Communication Services
New York State Department of Environmental Conservation
6274 East Avon-Lima Road
Avon, NY 14414
Phone: 585-226-5363
Fax: 585-226-9458
Email: jill.bishop@dec.ny.gov

3.4 Print Media (Fact Sheets)

Printed communications materials, such as fact sheets, newsletters or brochures, are one of several citizen participation tools used to provide information to the community about a project. Fact sheets are typically two to four pages in length, and portray a specific topic of interest in community-friendly (non-technical) terms. Pictures and graphics are used as much as possible to enhance the fact sheet and more simply communicate key information. The NYSDEC will prepare Fact Sheets at certain key milestones of the project in accordance with NYSDEC Program Policy No. 23 (the *Citizen Participation Handbook for Remedial Programs*). In

addition, Corning Incorporated will prepare additional informative newsletters and/or fact sheets and periodically distribute these materials to interested individuals and organizations. For example, Corning Incorporated newsletters/fact sheets may contain articles on the status of the environmental project, listings of recently issued documents, names of individuals to contact for more information, and descriptions of study techniques or technologies or project milestones. The newsletters/fact sheets will be used to increase community awareness and knowledge of the project and its status. All fact sheets will be reviewed and approved by the NYSDEC before being distributed to entities on the Real Property contact list.

3.5 Websites

In today's society, providing information on the Internet is an effective means of communication. Most community members have some access to the Internet (at home, at work, or at a public library), and this can be an important communications vehicle for consolidated, accurate, and up-to-date information and visuals. NYSDEC and Corning will each establish a website for the project, and each will announce the addresses via a fact sheet.

3.6 Summaries of Technical Reports

In addition to technical reports placed in the document repositories, a summary (in the form of a fact sheet) will be provided after each technical report has been finalized to communicate the facts about the project in simple terms to enhance understanding. It is important that technical information is articulated with a realistic and understandable view of the work being done and the potential risks or exposures involved. It is, however, also important that the community be able to understand the issues in lay terms.

3.7 Public Notices

As required by NYSDEC Program Policy, formal public notices will be published to inform stakeholders and community members of certain milestones or events concerning the project. These notices will be placed in a local newspaper of general circulation, and will appear in a prominent position in the paper with adequate time for the community to plan participation.

3.8 Public Comment Periods and Comment Responses

If requested by the NYSDEC, the public will be given an opportunity to comment on certain project documents and to receive comment responses from the NYSDEC. Under NYSDEC program policy, the public would typically be allowed 30 days to comment on a particular document. Formal comment response documents would be prepared by the NYSDEC, and provided to the public. In this manner, the public will obtain direct feedback on their comments, and will understand how the comments are being incorporated into final decisions being made regarding the project.

3.9 Meetings

Public or town meetings and/or availability sessions will be held as appropriate (e.g., to announce major milestones during the project), or as requested by the NYSDEC or the community. Such meetings will include (as appropriate) posters, exhibits, and displays that give audience members

graphic representations of project activities, findings, or program schedules. These materials will provide perspective to the community with respect to the study.

Public meetings will be held in a convenient and central location to the community. Meeting times and locations would be determined with input from local community leaders, and will be announced in local newspapers and/or a mailing to the community.

3.10 Media Notification

Media releases will be developed at key milestones of the program and distributed to local newspapers and other media outlets that may express interest. Media contacts are listed in Appendix D. Media briefings can also be arranged if media representatives have the need for additional background information on the project.

3.11 Elected State and Federal and Local Officials Briefings

Briefings to state and federal elected officials and local officials will be scheduled as needed or requested to communicate significant events during the project. Such briefings will keep these leaders involved and informed as to the progress of activities on the project. These briefings will also give officials the opportunity to ask questions or resolve any concerns.

3.12 Revise the CP Plan

During the course of implementing the CP Plan, Corning Incorporated and the NYSDEC may identify additional community needs, issues, or concerns regarding the Real Property that are not currently addressed in this CP Plan. As such, the CP Plan will be updated as needed, or at least every three years.

4.0 References

The Guthrie Clinic (North) Property Characterization Work Plan, (AECOM, October 2020)

Appendix A

Project Contacts

For additional information about the program, the public is encouraged to contact any of the project staff listed below.

Technical Information:

Jenelle Gaylord
NYS Department of Environmental Conservation
Division of Environmental Remediation
625 Broadway
Albany, NY 12233
Phone: (518) 402-9791
Email: jenelle.gaylord@dec.ny.gov

The Guthrie Clinic (North) Property -Related Health Information:

John Robinson
Public Health Specialist II - Bureau of Environmental Exposure Investigation
New York State Department of Health
Empire State Plaza – Corning Tower Room #1787
Albany, NY 12237
Desk Phone: 518.402.7881
Fax: 518.402.7859
Email: johnathan.robinson@health.ny.gov

Citizen Participation:

Jill M. Bishop
Agency Program Aide & Region 8 FOIL Coordinator, Office of Communication Services
New York State Department of Environmental Conservation
6274 East Avon-Lima Road
Avon, NY 14414
Phone: 585-226-5363
Fax: 585-226-9458
Email: jill.bishop@dec.ny.gov

Appendix B

Document Repositories

Two document repositories have been established to provide the public with convenient access to important project documents and other information. This information will include reports, data and information gathered and developed during the course of the assessment and evaluation of conditions surrounding the Real Property. These repositories can be found at the following locations:

Southeast Steuben County Library

300 Nasser Civic Center Plaza

Corning, NY, 14830

Phone: (607) 936-3713

Contact: (reference librarian) for an appointment

Hours:	Monday	9:00am-6:00 pm
	Tuesday	9:00am-8:00pm
	Wednesday	9:00am-6:00pm
	Thursday	9:00am-8:00pm
	Friday	9:00am-6:00pm

NYSDEC Region 8 Office

6274 Avon-Lima Rd. (Rtes. 5 and 20)

Avon, NY 14414-9516

Contact: Regional Public Participation Specialist
at (585) 226-5324 for an appointment

Hours: Monday through Friday 8:30am-4:45pm

Appendix C

List of Available Documents

According to the NYSDEC, the following documents are available at the document repositories listed in Appendix B of this CPP:

- Order on Consent and Settlement Agreement DEC Index No. R8-20200903-107, dated August 2021
- The Guthrie Clinic (North) Property Characterization Work Plan, (AECOM, October 2020)
- Citizen Participation Plan, dated August 2021

Within the initial months of the project, Corning Incorporated will also provide copies of the following documents for the document repositories:

- Fact Sheets prepared and distributed to the Project Contact List

Additional documents not listed above will be placed in the designated repositories as the program for the Real Property develops.

Appendix D

Project Contact List

The following contact list has been developed to help keep the community informed about and involved in the project activities relating to The Guthrie Clinic (North) Property. The list includes local, regional and state officials; local media; civic, business, and environmental organizations; and others. The Project Contact List will be reviewed periodically and updated as appropriate.

Note: The property owner is maintained confidentially in project files, not in a CP Plan or repositories

Environmental Groups

Friends of the Chemung River Watershed
111 N. Main St.
Elmira, NY 14901

Media

Shawn Vargo, News Editor
The Leader
34 West Pulteney St.
Corning, NY, 14830

Kevin Hogan, Executive Editor
Star-Gazette
201 Baldwin St., P.O. Box 285
Elmira, NY, 14902

News Director
WETM-TV
101 East Water Street
Elmira, NY, 14901

News Director
WENY-TV
474 Old Ithaca Road
Horseheads, NY, 14845

News Director
YNN
815 Erie Blvd. East
Syracuse, NY, 13210

Associated Press
Albany Bureau
645 Albany Shaker Rd.
P.O. Box 11010
Albany, NY, 12211

Local Officials

City of Corning

Honorable William M. Boland, Jr., Mayor
City of Corning
500 Civic Center Plaza
Corning, NY, 14830

Mark L. Ryckman, City Manager
City of Corning
500 Civic Center Plaza
Corning, NY, 14830

Chris Karam – Deputy Mayor
City of Corning
500 Civic Center Plaza
Corning, NY, 14830

Councilwoman Diane Telehany
City of Corning
500 Civic Center Plaza
Corning, NY, 14830

Councilwoman Kate Paterson
City of Corning
500 Civic Center Plaza
Corning, NY, 14830

Councilman Marshall Hyde
City of Corning
500 Civic Center Plaza
Corning, NY, 14830

Councilman Frank Muccini
City of Corning
500 Civic Center Plaza
Corning, NY, 14830

Councilman Frank Coccho
City of Corning
500 Civic Center Plaza
Corning, NY, 14830

Councilman Mark ReSue
City of Corning
500 Civic Center Plaza
Corning, NY, 14830

Councilwoman Alison Hunt

City of Corning
500 Civic Center Plaza
Corning, NY, 14830

Steve McDaniel, Code Enforcement
Department of Planning & Economic Development
Corning Planning and Zoning Commission
500 Civic Center Plaza
Corning, NY, 14830

Jeffrey R. Spaulding, Police Head
500 Civic Center Plaza
Corning, NY, 14830

Corning-Painted Post School District

Michelle Caulfield, Superintendent
165 Charles St.
Painted Post, NY, 14870

Jeffrey Delorme, Assistant Superintendent
165 Charles St.
Painted Post, NY, 14870

Dr. Dale Wexell, Board President
372 W. Second St.
Corning, NY, 14830

Victoria Zingler, Vice President
2 Knollbrook Lane East
Painted Post, NY, 14870

Kevin Ashton
110 High Road
Corning, NY, 14830

Margie Lawlor
106 E 5th Street
Corning, NY, 14870

Kelley Bacalles
165 Charles St.
Painted Post, NY, 14870

Kristina Belanger
57 Pine Drive
Painted Post, NY, 14870

Mary Franklin

411 N. Hamilton St.
Painted Post, NY, 14870

Janelle Meteer
10777B Skyline Drive
Corning, NY, 14830

Dr. James Webb
102 High Road
Corning, NY, 14830

[Steuben County Officials](#)

Steven Maio, Esq.
Steuben County Legislature
3 East Pulteney Square
Bath, NY, 14810

Honorable Hilda T. Lando
Steuben County Legislature
3 East Pulteney Square
Bath, NY, 14810

Jack Wheeler, County Manager
Steuben County Office Building
3 East Pulteney Square
Bath, NY, 14810

Judith M. Hunter, Clerk Steuben County
County Clerk's Building
3 East Pulteney Square
Bath, NY, 14810

Amy R. Dlugos
Steuben County Planning Department
3 East Pulteney Square
Bath, NY, 14810

Vincent Spagnoletti, Commissioner
Steuben Public Works Department
3 East Pulteney Square
Bath, NY, 14810

Darlene Smith, Director
Public Health and Nursing Services
3 East Pulteney Square
Bath, NY, 14810

Wendy Jordan, Director

Real Property Tax Service Agency
3 East Pulteney Square
Bath, NY, 14810

State Officials

Tim Walsh
Regional Director
NYSDEC Region 8
6274 East Avon-Lima Road
Avon, NY, 14414

Dudley Loew, Esq.
Acting Regional Attorney
NYSDEC Region 8
6274 East Avon-Lima Road
Avon, NY, 14414

Greg MacLean, P.E.
Materials Management Engineer
NYSDEC Region 8
6274 East Avon-Lima Road
Avon, NY, 14414

David Pratt
Division of Environmental Remediation
6274 East Avon-Lima Road
Avon, NY, 14414

Jill M. Bishop
Agency Program Aide & Region 8 FOIL Coordinator, Office of Communication Services
New York State Department of Environmental Conservation
6274 East Avon-Lima Road
Avon, NY 14414

John Robinson
Public Health Specialist II - Bureau of Environmental Exposure Investigation
New York State Department of Health
Empire State Plaza – Corning Tower Room #1787
Albany, NY 12237

State Elected Officials

Senator Thomas F. O'Mara
333 East Water St., 3rd Floor, Suite 301
Elmira, NY, 14901

Assemblyman Philip A. Palmesano
105 E. Steuben St.
Bath, NY, 14810

Federal Elected Officials

Honorable Charles Schumer
United States Senate
322 Hart Senate Office Building
Washington D.C., 20510

Honorable Kirsten Gillibrand
United States Senate
478 Russell
Washington, D.C., 20510

Congressman Tom Reed
United States House of Representatives
1203 Longworth Building
Washington, D.C., 20515

Property Owner List – To Be Maintained Confidentially**Property Owners to the East**

Duncan Streeten
26 Pyrex Street
Corning, NY, 14830

Monica & Kevin Murph
28 Pyrex Street
Corning, NY, 14830

Ellen & Robert Lagola
30 Pyrex Street
Corning, NY, 14830

Noreen & Stephen Pryslopsi
32 Pyrex Street
Corning, NY, 14830

Property Owners to the West

Corning Property Management Corporation
1 E Pulteney Street
Corning, NY, 14830

Mailing Address:
One Riverfront Plaza
MP-HQ-01-E1H10A
Corning, NY, 14831

Property Owners to the North

Christopher Coats
170 South Place
Corning, NY, 14830

Patricia Giadom
174 South Place
Corning, NY, 14830

Mary Galvin
178 South Place
Corning, NY, 14830

Kristen Stewart
182 South Place
Corning, NY, 14830

Sandra Celelli

186 South Place
Corning, NY, 14830

Zarine Andolino
33 Pyrex St
Corning, NY, 14830

Property Owners to the South

Guthrie Clinic LTD, d/b/a Guthrie Medical Group PC
130 Centerway
Corning, NY, 14830

Appendix E

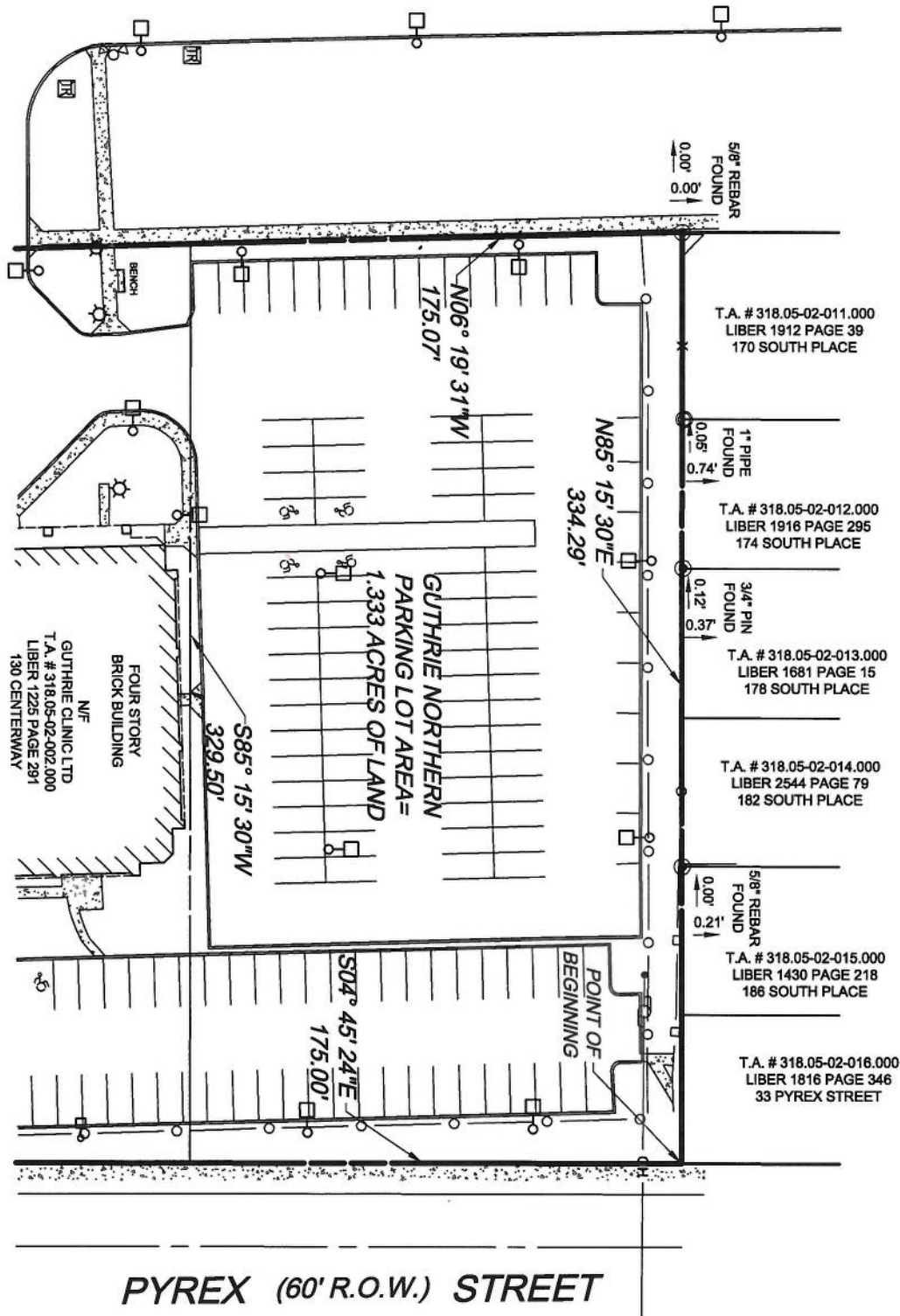
Glossary

Term	Definition
Availability Session	A scheduled gathering of project staff and members of the public in a casual setting, without a formal presentation or agenda but usually focusing on a specific aspect of an environmental study.
Citizen Participation	A program of planning and activities to encourage communication among people affected by or interested in the project and the government agencies and other parties responsible for an environmental study.
Citizen Participation Plan	A Citizen Participation Plan describes the citizen participation activities that will be conducted during a specific project's environmental study.
Comment Period	A period for the public to review and comment about various documents. For example, a 30-day comment period after submittal of remedial investigation or feasibility report is provided when NYSDEC determines it to be necessary.
Consent Order	A legal and enforceable agreement negotiated between NYSDEC and a potential responsible party. The order sets forth agreed upon terms by which the potential responsible party will undertake an environmental study and pay for the NYSDEC's costs to oversee the study. The Consent Order includes a schedule for implementing the agreed scope of the study.
Document Repository	A document repository is a file of documents pertaining to the environmental study of a study area and the associated citizen participation programs, which is made available for public review. The file is typically maintained in a nearby public building to provide access at times and a location convenient to the public.
Fact Sheet	A written discussion about part or all of an environmental project, prepared by NYSDEC or the potential responsible party and provided to the public. A fact sheet may focus on: a particular element of a project; opportunities for public involvement; availability of a report or other information, or announcement of a public meeting or comment period . A fact sheet may be mailed to all or part of a project's contact list, distributed at meetings, placed in a document repository and/or sent on an "as requested" basis.
New York State Department of Health	Agency within the executive branch of New York State government which: performs health-related inspections at suspected hazardous waste sites; conducts health assessments to determine potential risk from environmental exposure; reviews risk assessments ; conducts health-related community outreach around sites; and reviews remedial actions to assure that public health concerns are adequately addressed.
NYSDEC Project Manager	An NYSDEC staff member (usually an engineer, geologist or hydro geologist) responsible for the day-to-day administration of an environmental project. The Project Manager works with legal, health, citizen participation and other staff to accomplish project-related goals and objectives.
Public Meeting	A scheduled gathering of NYSDEC staff and potential responsible party staff with the public to give and receive information, ask questions and discuss concerns about a study area. Staff from multiple NYSDEC divisions and legal and NYSDOH often also attend. A public meeting, unlike an availability session , generally features a formal presentation and a detailed agenda.

Appendix F

The Guthrie Clinic (North) Property Map

CENTERWAY (R.O.W. VARIES) WAY



REVISIONS

PYREX (60' R.O.W.) STREET

REFERENCE(S)

- 1) MAP ENTITLED "130
CENTERWAY WAY EXISTING
FEATURES MAP HAVING DWG
6281 VA100 DATED 7/29/2016.

CERTIFICATION

WE, COSTICH ENGINEERING, D.P.C., HEREBY CERTIFY TO

THAT THIS MAP WAS PREPARED FROM NOTES OF AN INSTRUMENT SURVEY COMPLETED ON JULY 6, 2016 AND FROM THE REFERENCE(S) LISTED HEREON. NO SEARCH OF RECORDS, OTHER THAN THOSE REFERENCED, WAS MADE FOR EASEMENTS OR ENCUMBRANCES AFFECTING THIS PARCEL.

By: *Daniel T. Hickok*
Daniel T. Hickok, N.Y.S. L.S., No. 050449

Date: *10/30/2020*

APPROVED BY:
DWG FILE:
PLOTTED: Oct 30, 2020 - 12:42PM



COSTICH
ENGINEERING

- CIVIL
ENGINEERING
- LAND
SURVEYING
- LANDSCAPE
ARCHITECTURE

217 LAKE AVENUE
ROCHESTER, NY 14608
(585) 458-3020

PROJECT: **EXISTING FEATURES MAP
GUTHRIE NORTHERN PARKING LOT
PORTION OF T.A # 318.05-02-002.000**

CITY: **CORNING**

COUNTY: **STEBEN**

STATE: **NEW YORK**

SCALE: **1"=60'**

DATE: **JUNE 22, 2020**

DWG. NUMBER **6281-VA110**