

Make a vital impact

Join the Corning community

[APPLY NOW](#)

Who We Are

Corning's impact on society is real: from groundbreaking inventions in glass and ceramics to lifesaving and life-changing technologies. We draw on materials-science leadership, pioneering manufacturing processes, and industry expertise to make vital contributions to the world.



Employees:
~58,000 (~73% working outside the US)



Research Centers:
~10 Global R&D Centers across North America, Europe, and Asia



2022 Core Sales: ~\$14.8 billion



2022 Fortune 500 ranking: 263

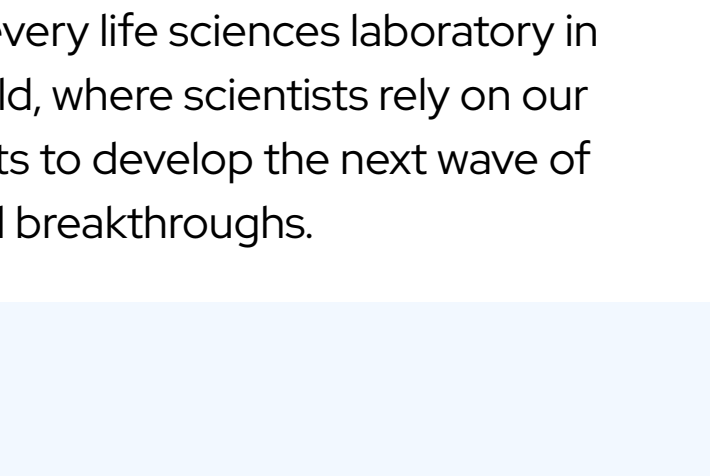
What We Do

Three core technologies anchor the work we do at Corning: glass science, ceramic science, and optical physics. We take these technologies to market across five business areas, which we call Market Access Platforms (MAPs).

Market Access Platforms (MAPs)

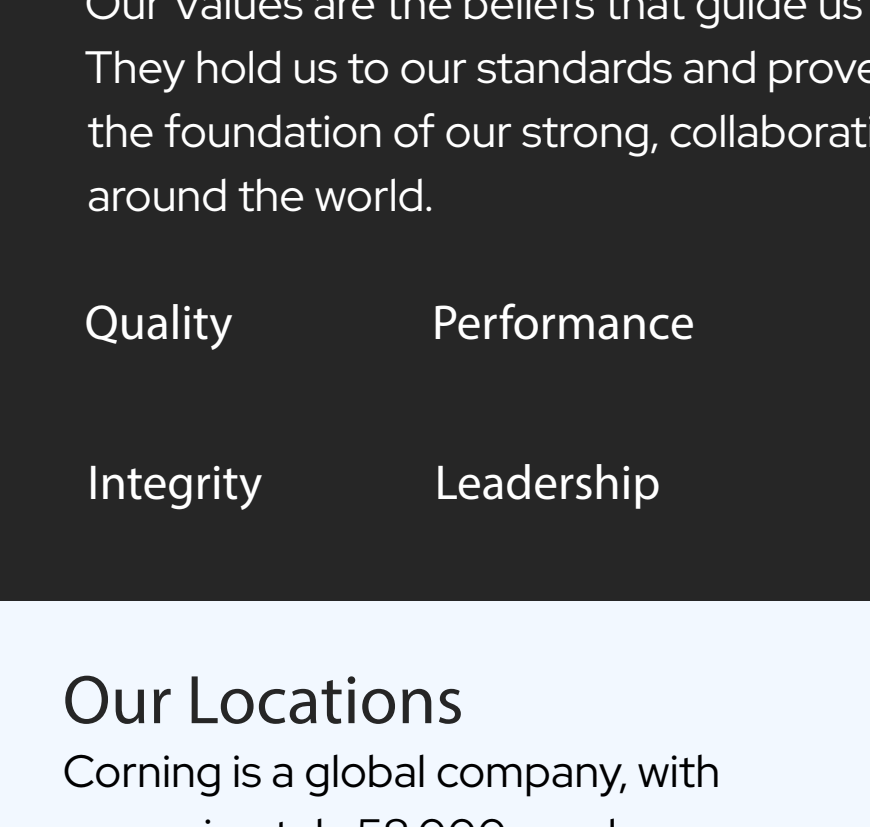
Optical Communications

We invented the world's first low-loss optical fiber in 1970 and continue to pioneer optical fiber, cable, and connectivity solutions.



Mobile Consumer Electronics

By pioneering glass that is thin, lightweight, damage resistant, and responsive to touch, we are helping transform the way people use their smartphones.



Display

We helped create the LCD industry by inventing a process for making thin, flat glass with exceptional stability and unparalleled surface quality. Today, we are leveraging our expertise and assets to drive the next round of display innovations.

Automotive

Building on more than four decades of leadership in clean-air technologies, we continually develop new innovations for emissions control, including particulate filters for gasoline engines.

Life Sciences

Corning's products can be found in nearly every life sciences laboratory in the world, where scientists rely on our products to develop the next wave of medical breakthroughs.

Our Culture

We cultivate careers of discovery, respect, and partnership that help employees meet the toughest challenges and reach their highest potential. We are a global network of industry-leading professionals empowered by a culture of flexibility, collaboration, learning, and innovation to solve the toughest problems across a diverse range of industries.

Our Values

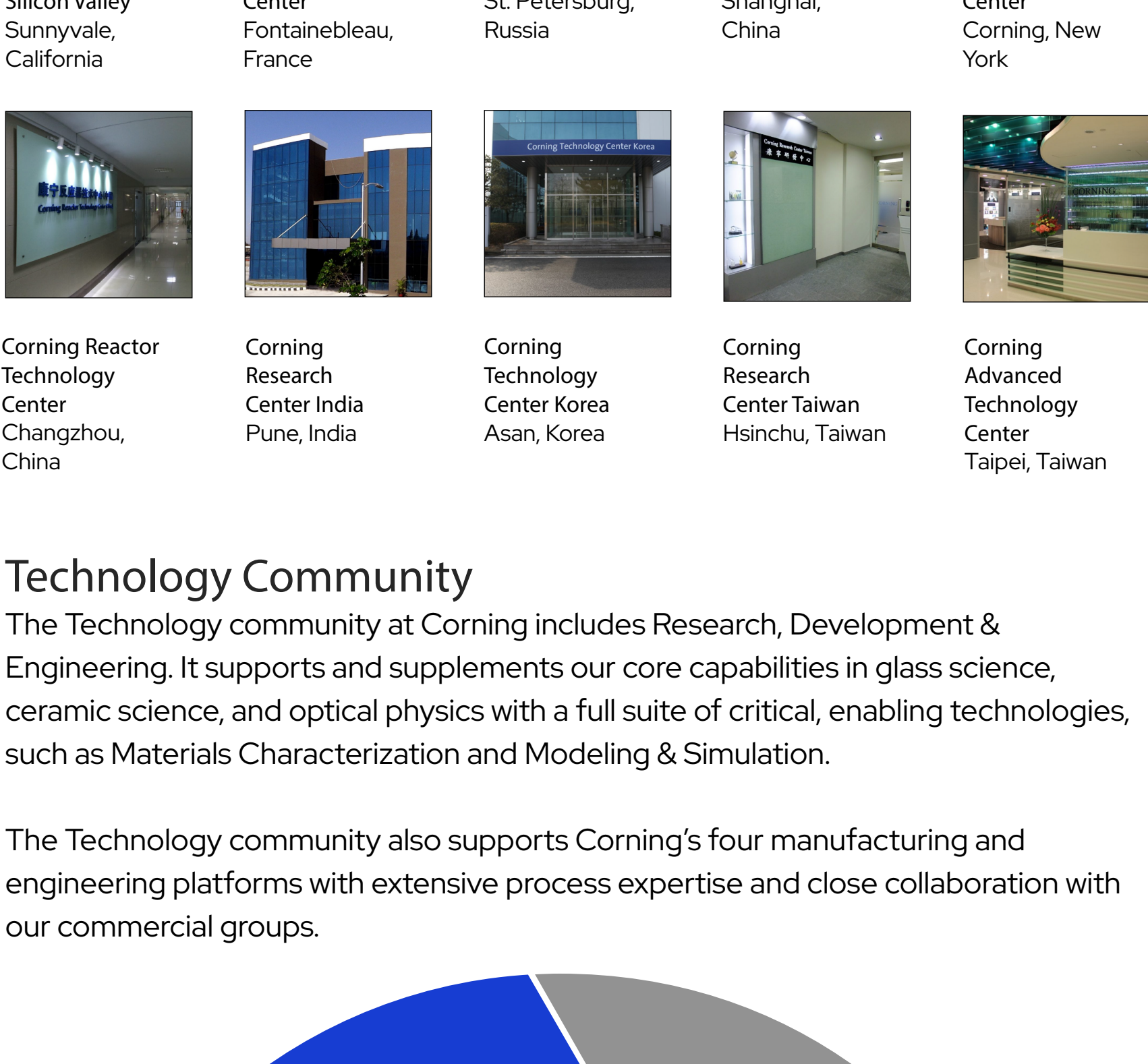
Our Values are the beliefs that guide us in all we do, both internally and externally. They hold us to our standards and prove our commitment to excellence. They are the foundation of our strong, collaborative culture. We live all seven, all the time, all around the world.

Quality	Performance	Innovation	The Individual
Integrity	Leadership	Independence	

Our Locations

Corning is a global company, with approximately 58,000 employees across the globe.

148 LOCATIONS
IN 44 COUNTRIES



*Map location designations are approximate.

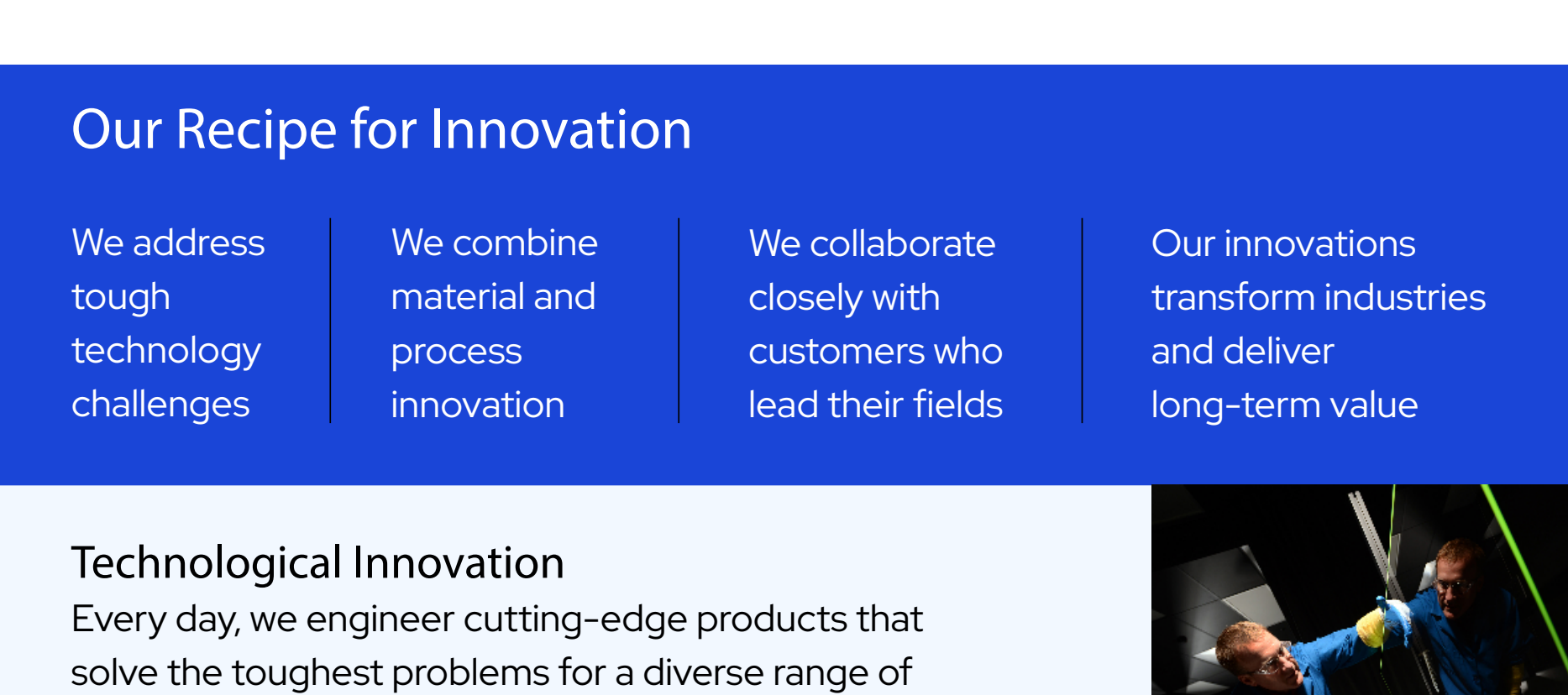
Sullivan Park

Sullivan Park, New York is the central location for Corning's global network of regional R&D laboratories in Europe, Asia, and Silicon Valley in the U.S., and is the primary location for early-stage research through product development. It houses several pilot plants to produce prototypes and test production scale manufacturing.

2 million+ square foot campus

2,000+ scientists, engineers, and operations staff

44 countries represented through employees



Global Laboratories

We have a global network of laboratories throughout Asia and Europe that serve as important R&D resources for our local business, manufacturing operations, and customers.

[Click here to learn more about our Global Labs and Culture of Innovation](#)



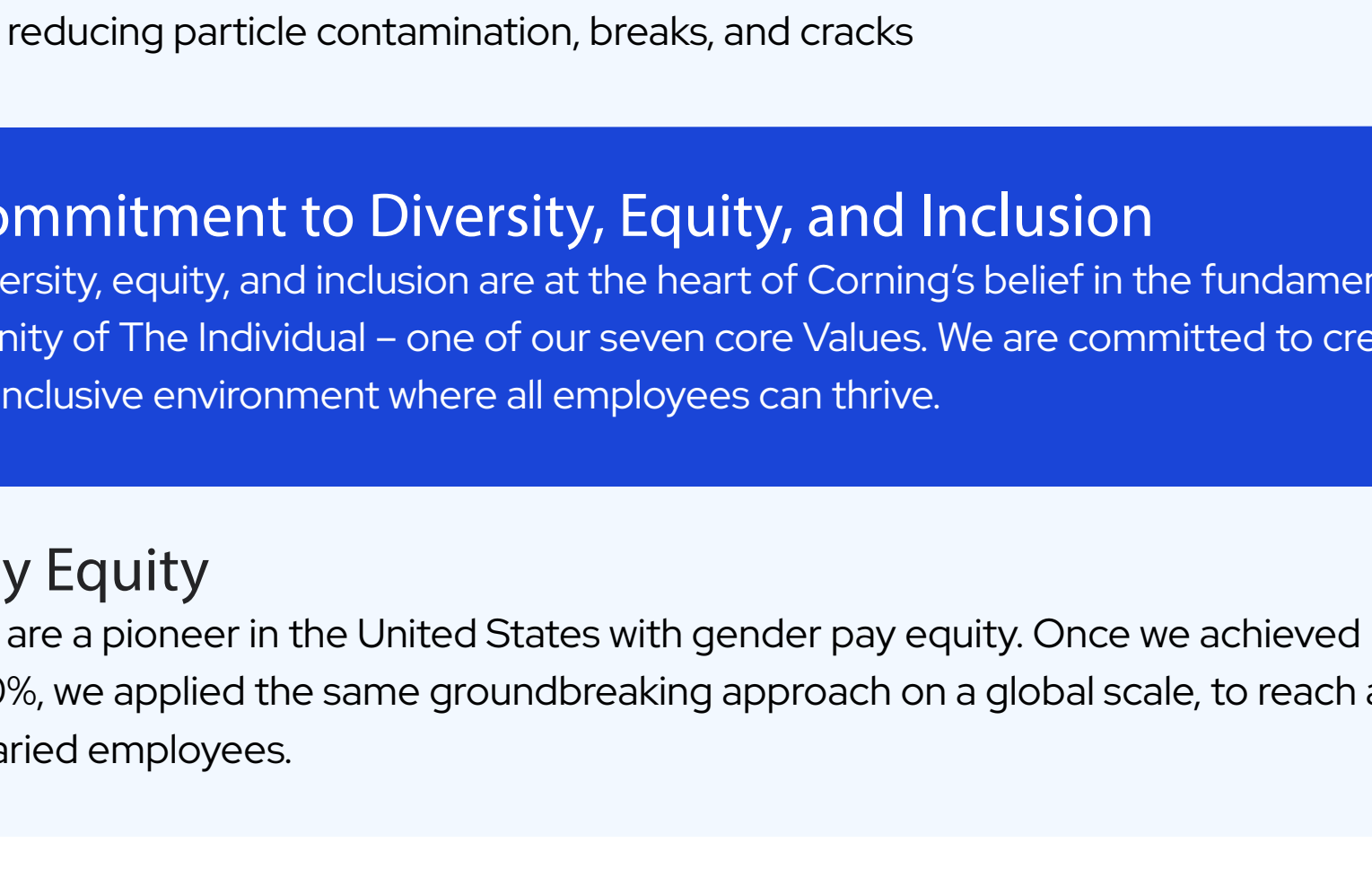
Corning Technology Center Silicon Valley Sunnyvale, California | Corning European Technology Center Fontainebleau, France | Corning Scientific Center St. Petersburg, Russia | Corning Scientific Center China Shanghai, China | Sullivan Park Science & Technology Center Corning, New York

Corning Reactor Technology Center Changzhou, China | Corning Research Center India Pune, India | Corning Technology Center Korea Asan, Korea | Corning Research Center Taiwan Hsinchu, Taiwan | Corning Advanced Technology Center Taipei, Taiwan

Technology Community

The Technology community at Corning includes Research, Development & Engineering. It supports and supplements our core capabilities in glass science, ceramic science, and optical physics with a full suite of critical, enabling technologies, such as Materials Characterization and Modeling & Simulation.

The Technology community also supports Corning's four manufacturing and engineering platforms with extensive process expertise and close collaboration with our commercial groups.



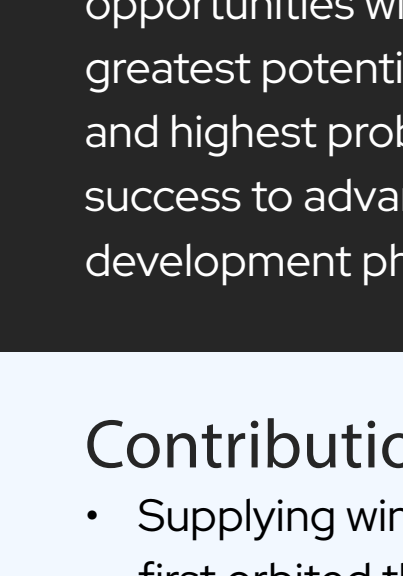
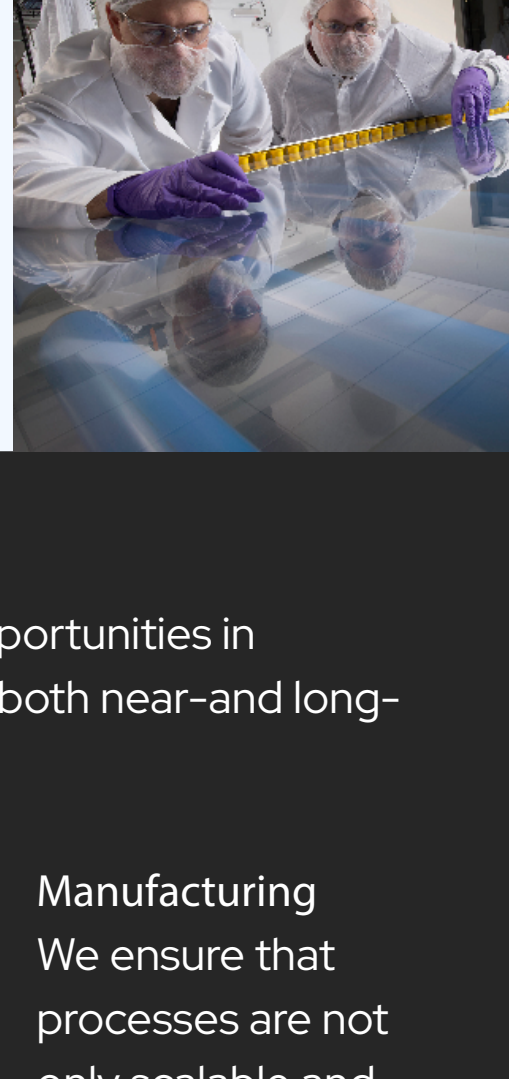
Multiple disciplines and close collaboration create synergies that lead to novel solutions.

Our Recipe for Innovation

- We address tough technology challenges
- We combine material and process innovation
- We collaborate closely with customers who lead their fields
- Our innovations transform industries and deliver long-term value

Technological Innovation

Every day, we engineer cutting-edge products that solve the toughest problems for a diverse range of industries. Our employees work with established and new technologies, systems, and processes – always learning, growing, and practicing.

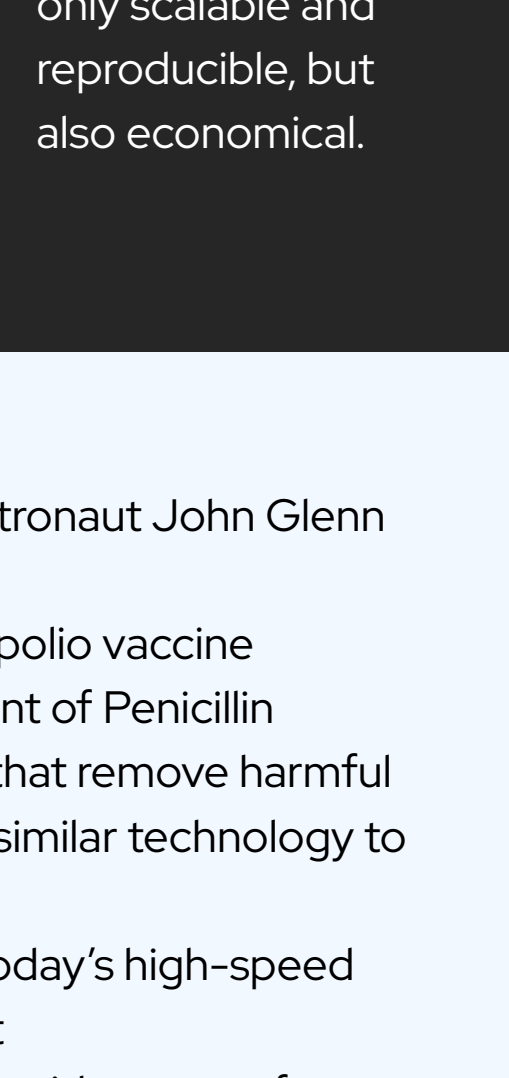


Investing in Research, Development, and Engineering (RD&E)

We invest approximately 10% of our sales into RD&E, which is significantly higher than our peers. We consistently maintain this investment baseline, irrespective of company performance, to help create tomorrow's growth drivers.

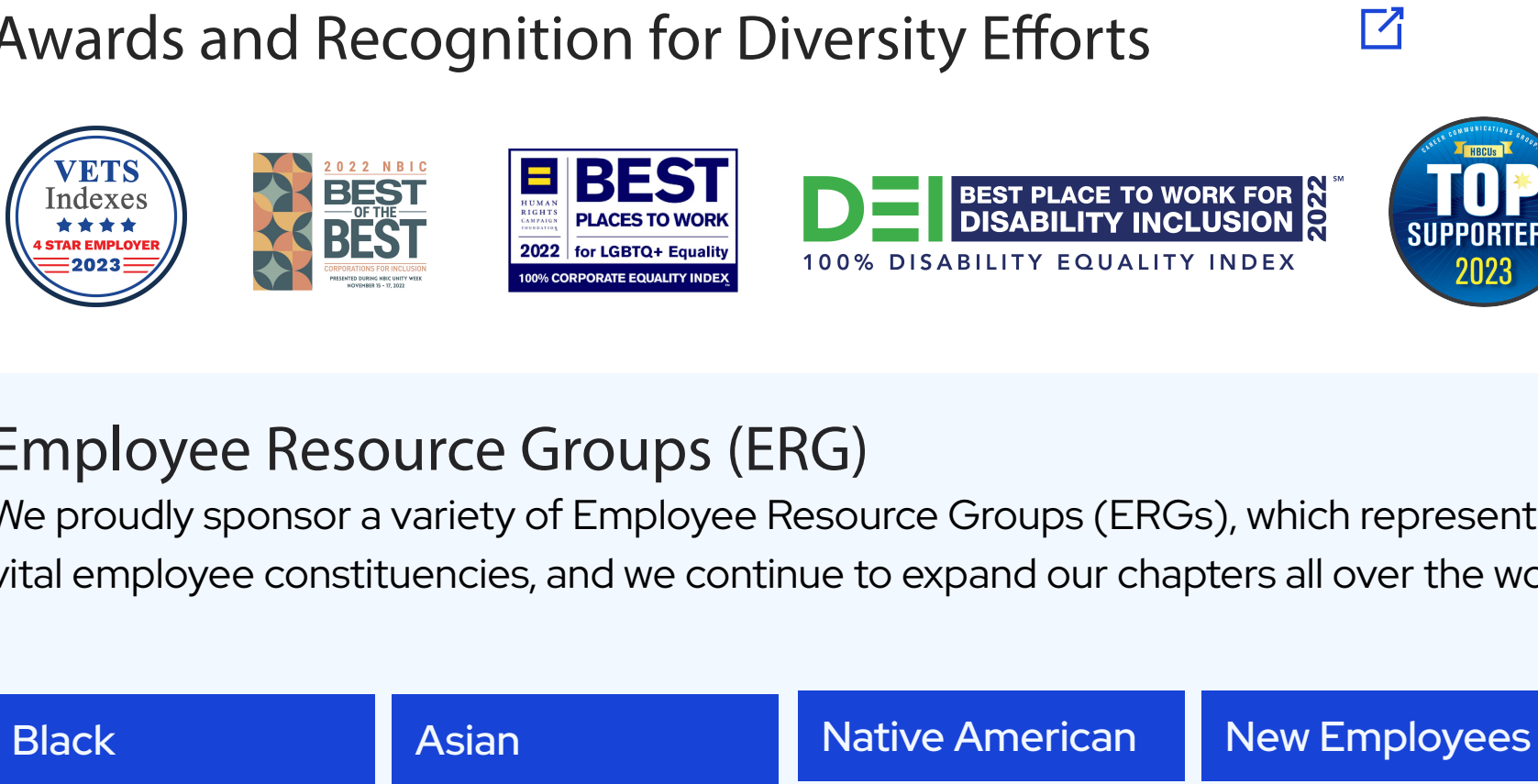
Building Intellectual Property

Corning is one of the most productive organizations in the world in terms of patent generation. In 2020, we earned approximately 480 patents in the United States and more than 1,600 patents in other countries. At the end of 2020, we held more than 11,750+ patents worldwide.



Innovation Process

Our innovation pipeline ensures we have a robust portfolio of opportunities in different markets as well as a good balance of initiatives to drive both near- and long-term growth.



Contributions We've Made to the World

- Supplying windows for every manned U.S. spacecraft since astronaut John Glenn first orbited the Earth in 1962
- Producing glass jars that were used to grow Jonas Salk's anti-polio vaccine
- Supplying our PYREX® petri dishes to support the development of Penicillin
- Inventing the ceramic substrates used in catalytic converters that remove harmful pollutants from a car's exhaust system, and the invention of a similar technology to reduce the pollution emitted by diesel engines
- Developing low-loss optical fiber, a technology that enables today's high-speed Internet by moving millions of bits of data at the speed of light
- Producing several high-tech devices that are used in a wide range of products, such as high definition flatscreen TVs, tablets, and the latest smart phones
- Developing a revolutionary pharmaceutical glass packaging, Valor® Glass, which helps protect patients and improve pharmaceutical manufacturing by dramatically reducing particle contamination, breaks, and cracks

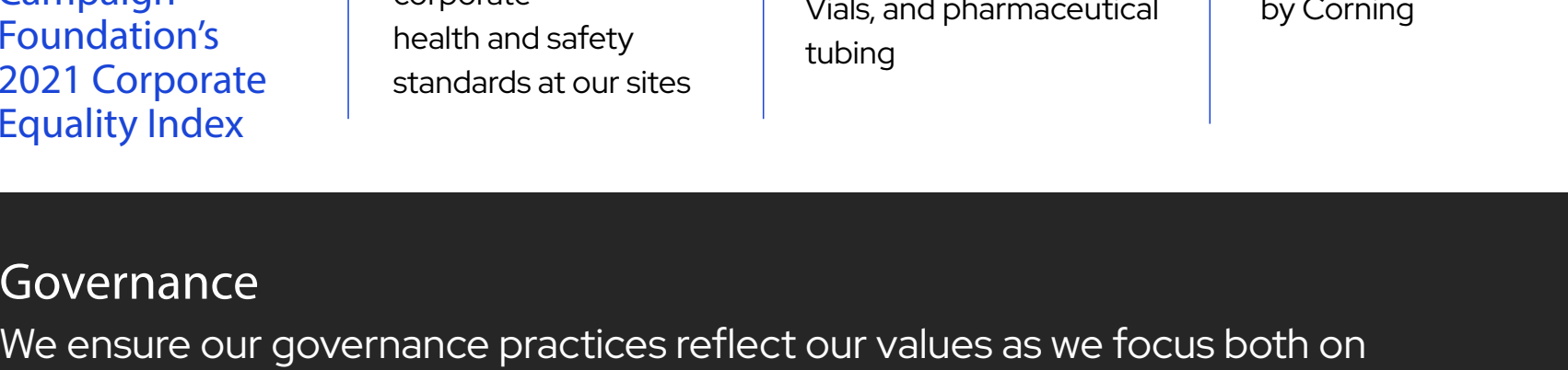
Commitment to Diversity, Equity, and Inclusion

Diversity, equity, and inclusion are at the heart of Corning's belief in the fundamental dignity of The Individual – one of our seven core Values. We are committed to creating an inclusive environment where all employees can thrive.

Pay Equity

We are a pioneer in the United States with gender pay equity. Once we achieved 100%, we applied the same groundbreaking approach on a global scale, to reach all salaried employees.

Awards and Recognition for Diversity Efforts



Employee Resource Groups (ERG)

We proudly sponsor a variety of Employee Resource Groups (ERGs), which represent vital employee constituencies, and we continue to expand our chapters all over the world.

Black	Asian	Native American	New Employees
Disabilities	Hispanic/Latino	Parents/Families	Veterans
LGBTQ	Multi-Ethnic	Women	

Our Corporate Responsibility

Our sustainability journey emphasizes safety, innovation, and community engagement. In recent years, we've expanded our scope to include a broader focus on renewable energy, reducing waste, and designing and manufacturing products with sustainable attributes in partnership with our customers.

Environmental

We are committed to preserving our planet through constant attention to our products and the way we make them.

- 8th consecutive year named by the U.S. Environmental Protection Agency as an ENERGY STAR® Partner of the year
- 3 new community solar projects launched
- 1st formal scenario-based climate risk assessment completed

Social

We strengthen our social commitments, open opportunities for people, and help sustain vibrant communities.

- Recognized by Forbes as one of the World's Best Employers
- 90% score Human Rights Campaign's 2021 Corporate Equality Index
- 5-year, \$5.5m STEM Partnership established with North Carolina A&T State University
- 95+% compliance rate with Corning corporate health and safety standards at our sites
- >\$3.4m in grants provided by the Corning Incorporated Foundation
- 5 billion doses of COVID-19 vaccines delivered with the help of Corning Valor® Glass, Velocity® Vials, and pharmaceutical tubing
- 31% of management/professionals globally are women
- \$1.3m in employee donations matched by Corning

Governance

We ensure our governance practices reflect our values as we focus both on our internal processes and on our supply chain operations.

- Added environmental criteria to our Supplier Code of Conduct
- >300 suppliers completed Supply Chain Social Responsibility eLearning
- 14 out of 15 board members are independent
- 2 new diverse directors appointed to our Board

2022 Sustainability Report:

[View Report](#)

Total Rewards

We offer a competitive, comprehensive career development, compensation, and benefits programs to our employees. We call it Total Rewards: Total Health, Total Wealth, Total Self. The programs reflect our commitment to supporting your financial, career-development, health, and life goals.

Employee Learning and Development

From internships and rotational programs to LinkedIn Learning and leadership development, we offer multiple development programs to support employee growth – across Corning locations.

Join Us

From light bulbs to LCDs, we've created breakthrough solutions that make a vital impact on our world. While our heritage is important, our focus remains on the future – including the people who'll drive our success.

Follow Us

[Corning Talent Community](#)

[Corning Social Media](#)

