





Corning® Gilbert® POLYLINK™


Plated Polymer Interconnect

The radio frequency and microwave connectivity industry’s first gold-plated plastic microwave connector, POLYLINK, is a lighter and more cost-advantaged solution for applications up to 26.5 GHz. POLYLINK provides a reliable alternative to Corning’s metalized beryllium copper-based push-on interconnect solutions (GPO®, GPPO®, G3PO™, and G4PO™), with compatible interfaces, faster production/lead time, and demonstrated performance. When every gram of payload counts and cost efficiency becomes a priority, POLYLINK can help solve tough connectivity challenges.

Low Cost, Light Weight, and Short Lead Time

 Up to 33% lighter at a lower cost than similarly sized Corning Gilbert metal blindmate interconnects.

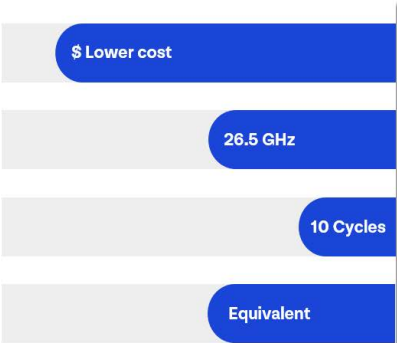
 Allows axial compression of the blindmate interconnect (withstand up to .005 axial compression).

 Demonstrated reliable blindmate interconnect performance for low-to-medium frequencies (up to 26.5 GHz) and ideal for single-use applications.

Applications

- Telecommunications, 5G, and high frequency commercial networks
- Aerospace and defense industries
- Automotive radar/sensing systems
- Weight-sensitive applications

Corning POLYLINK Interconnect



Corning Metal Interconnect

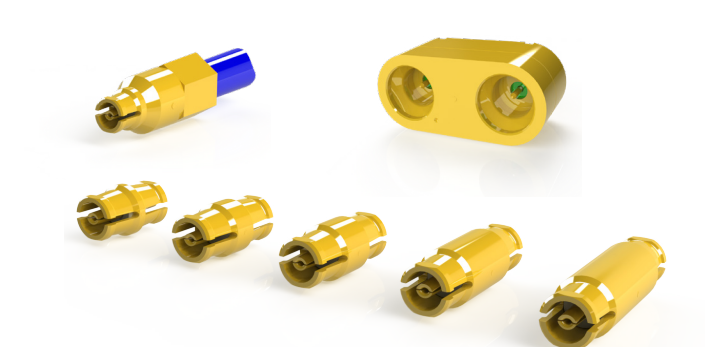


Corning® Gilbert® POLYLINK™ Interconnect Series

Corning’s POLYLINK interconnect series offers a lower weight blind mate interconnect that has center-to-center spacing of 0.135 in and weighs .06 g. This series maintains intermateability with standard GPPO® connectors.

POLYLINK Environmental Performance*

Thermal Shock	MIL-STD-202, Method 107, Condition B
Vibration	MIL-STD-202, Method 204
Moisture Resistance	MIL-STD-202, Method 106, Except Step 7B
Salt Spray	MIL-STD-202, Method 101
Shock	MIL-STD-202, Method 213, Condition I



POLYLINK Product Characteristics*


Impedance	50 Ohms
Frequency	DC to 26.5 GHz
Temperature Range	-65°C to +125°C
Contact Resistance	6.0 milliohms max., inner conductor 2.0 milliohms max., outer conductor
Insulation Resistance	5,000 megaohms min.
VSWR	1.25:1 to 15 GHz typ.; 1.35:1 to 26.5 GHz typ.
DWV at Sea Level	325 Vrms
Corona Level at 70,000 ft	125 Vrms
RF High Pot. at 5 MHz	200 Vrms
Center Contact Retention	1.5 lbs min. (captivated designs)
Radial Misalignment	3 degrees
Axial Misalignment**	0.020 in
Durability	10 cycles, full detent
Force to Disengage †	5 lbs typ., full detent
Force to Engage †	2.5 lbs typ., full detent

* Performance listed is typical. Individual part configuration may vary. Contact our technical team for more information and specification by part number.

** Base material allows for up to .005 in axial compression

† Engage/disengage forces are typical when mated with Corning metal shrouds.

Learn More About POLYLINK at
[Corning.com/Microwave](https://www.corning.com/Microwave) or Contact Our Customer Care Team:

 **Phone:**
1-800-743-2675 (U.S. and Canada)
1-828-901-5000 (International)

 **For inquiries/quote requests:**
ccsamericas@corning.com

Corning Incorporated reserves the right to improve, enhance, and modify the features and specifications of Corning Microwave RF products without prior notification. The information provided herein creates no express or implied warranties with respect to the products described and such warranties are hereby explicitly disclaimed. All other trademarks are the properties of their respective owners. Corning Incorporated is ISO 9001 certified.