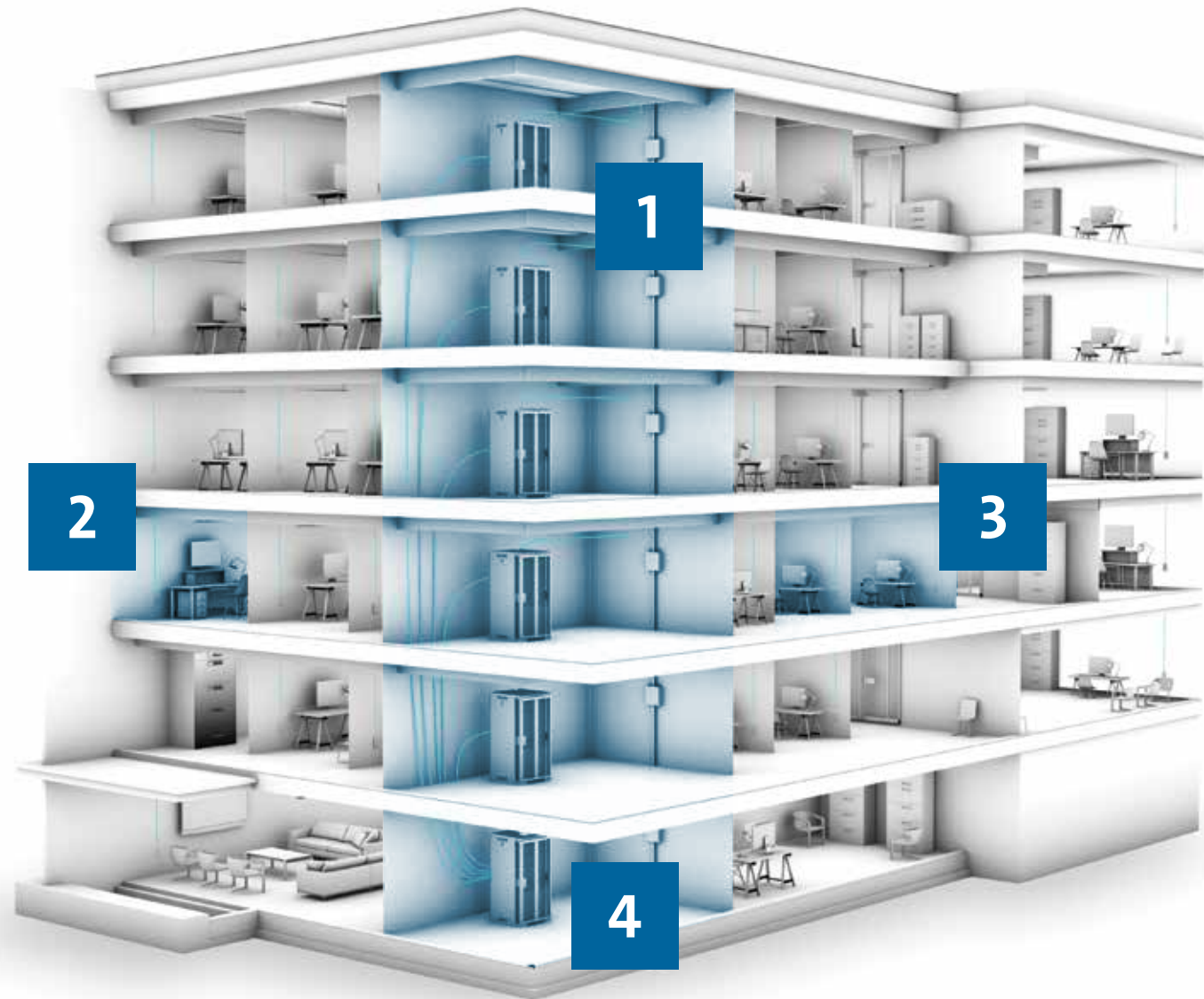


Where's Fiber?



1 Building backbone

is the telecommunications cabling that provides connections (typically from floor to floor) between telecommunications closets, equipment rooms, and entrance facilities. It can also be referred to as vertical cabling, interbuilding backbone (cabling between buildings) or intrabuilding backbone (cabling within a building).

Where is it used?

Any company or facility that requires different networking devices to communicate with each other

2 Network convergence

provides telephone, video, and data communication services within a single network. Users can access a wide range of services, such as asset tracking, security applications, and consistent cellular coverage for multiple wireless operators inside a facility.

Where is it used?

- Stadiums
- Entertainment venues
- Hospitals
- Offices
- Other buildings
- Mobile workforce

3 Fiber-to-the-desk

is an enterprise application that brings fiber from the backbone all the way to the desk, while taking advantage of the bandwidth, inherent security, ease of installation, and smaller footprint that fiber offers.

Where is it used?

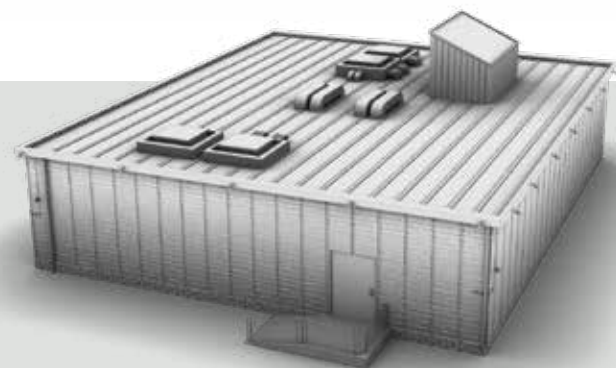
- Financial and corporate institutions
- Government facilities

4 Local area network (LAN)

is a combined group of computers, or computer systems, connected to each other that allow shared program software or databases. The LAN must support the increasing demands for voice, video, and data as well as requirements for security and building automation.

Where is it used?

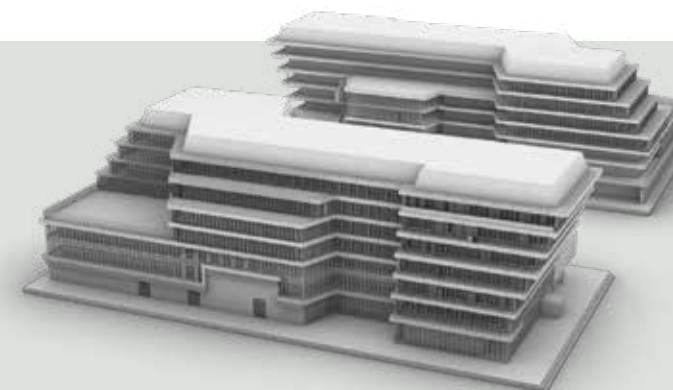
- Colleges
- Universities
- Office buildings
- Industrial plants



5 Data center is a facility composed of networked computers and storage that businesses or other organizations use to organize, process, store, and disseminate large amounts of data.

Where is it used?

Government agencies, colleges and universities, telecommunications companies, financial institutions, and retailers of all sizes



6 Campus backbone

consists of fiber optic cable, routers, and switches that interconnect building LANs to the campus core and to the internet.

Where is it used?

Universities, colleges, airports, hospitals, military establishments, industrial complexes, business parks, and commercial condominiums