



Life
Sciences



A brief report
from the Corning
Applications Group

The Synergistic Effect of HEK 293 Cells Grown in Serum-Free Medium with the Corning® CellBIND® Surface

Helen L. Krasnow, M.A., Ana Maria P. Pardo, Todd Upton, Ph.D., and Debra Hoover, Ph.D.

Introduction

An important part of adherent cell culture media is serum, which aids in both cell attachment and cell growth. However, rising costs, decreased availability, lot to lot variation, contamination issues, and downstream processing needs have led researchers and production labs to reduce or eliminate the use of serum in their processes. Most adherent cell lines can be adapted to grow in reduced serum concentrations; however, this often leads to a reduction in or a loss of cell attachment. The Corning CellBIND Surface is manufactured using a patented technology (US Patent 6,617,152) which can enhance cell attachment under reduced (or no) serum growth conditions. Here we use HEK 293 cells, a human cell line commonly used in both academic and industrial research, to demonstrate the advantage of combining the Corning CellBIND Surface and serum-free media for adherent cell growth.

Methods and Results

Cells used for this study were maintained in IMDM medium containing 10% fetal bovine serum. To initiate the study cells were harvested, washed two times and re-suspended in a commercially available serum free media. The cells were seeded in triplicate in standard tissue culture treated and Corning CellBIND Surface (Cat. No. 3290) T75 flasks at a density of 1×10^6 cells/flask. Cells were incubated at 37°C; 5% CO₂ for 96 hours. At the end of the culture period, adherent cells were harvested and enumerated using a hemacytometer.

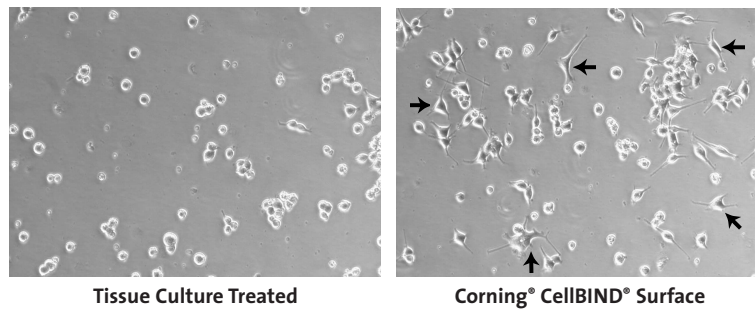


Figure 1. Representative field of HEK 293 cells grown under serum-free conditions on the Corning CellBIND Surface (right) and standard tissue culture treated surface (left) at 24 hours. Light micrograph (100X magnification).

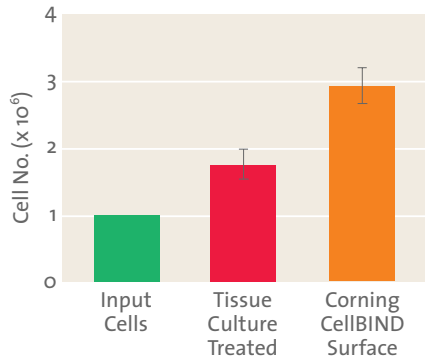


Figure 2. HEK 293 cell yields on the Corning CellBIND Surface and standard tissue culture treated surface using commercially available serum-free medium. Data is the average \pm S.E. of 3 independent experiments.

As can be seen in Figure 1, the cells grown serum-free on the Corning CellBIND Surface (right panel) show the characteristic flattened shape of adherent cells (arrows), whereas cells on a standard tissue culture treated surface are generally rounded. Additionally, there is a greater number of attached cells on the Corning CellBIND Surface as compared to a standard tissue culture treated surface. Importantly, when these cultures were allowed to grow for 96 hours, there were substantially more adherent cells (2.93×10^6 vs. 1.73×10^6) attached to the Corning CellBIND Surface as compared to the tissue culture treated surface (Figure 2). Comparing the results from 3 independent experiments indicated this difference was statistically significant (two-tailed t test, $p = 0.01$).

Conclusions

- Under these serum-free conditions, HEK 293 cells maintain a more normal/flattened adherent morphology on the Corning CellBIND Surface versus a standard tissue culture treated surface.
- The improved adherence of HEK cells on the Corning CellBIND Surface results in 69% more cells at 96 hours as compared to cells grown on standard tissue culture treated surfaces.
- The Corning CellBIND Surface yields a greater number of total cells (adherent and nonadherent) during the time course of the study.

Corning Incorporated Life Sciences

45 Nagog Park
Acton, MA 01720
t 800.492.1110
t 978.635.2200
f 978.635.2476

www.corning.com/lifesciences

Worldwide Support Offices

ASIA

Australia

t 61 2-9416-0492
f 61 2-9416-0493

China

t 86 21-3222-4666
f 86 21-6288-1575

Hong Kong

t 852-2807-2723
f 852-2807-2152

India

t 91 11 341 3440
f 91 11 341 1520

Japan

t 81 (0) 3-3586 1996/1997
f 81 (0) 3-3586 1291/1292

Korea

t 82 2-796-9500
f 82 2-796-9300

Singapore

t 65 6733-6511
f 65 6861-2913

Taiwan

t 886 2-2716-0338
f 886 2-2716-0339

EUROPE

France

t 0800 916 882
f 0800 918 636

Germany

t 0800 101 1153
f 0800 101 2427

The Netherlands & All Other European Countries

t 31 (0) 20 659 60 51
f 31 (0) 20 659 76 73

United Kingdom

t 0800 376 8660
f 0800 279 1117

LATIN AMERICA

Brasil

t (55-11) 3089-7419
f (55-11) 3167-0700

Mexico

t (52-81) 8158-8400
f (52-81) 8313-8589