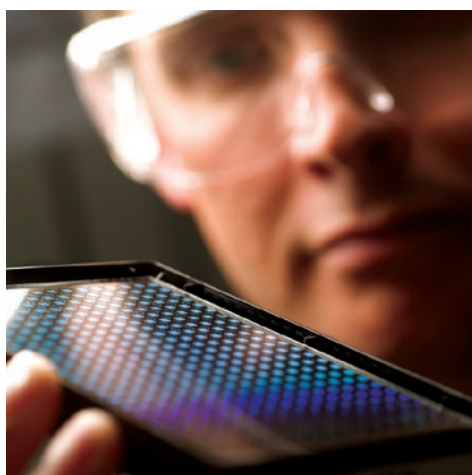
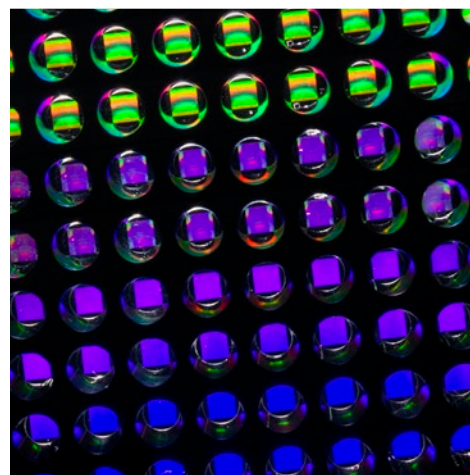
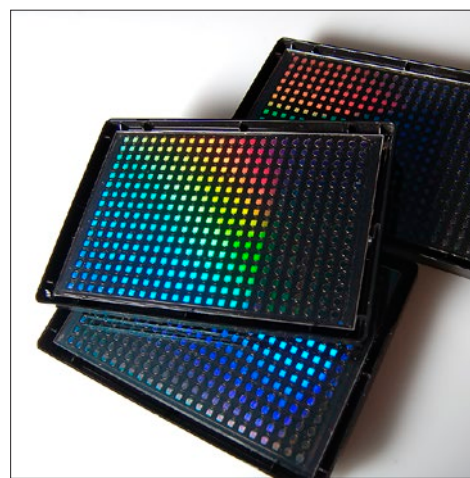
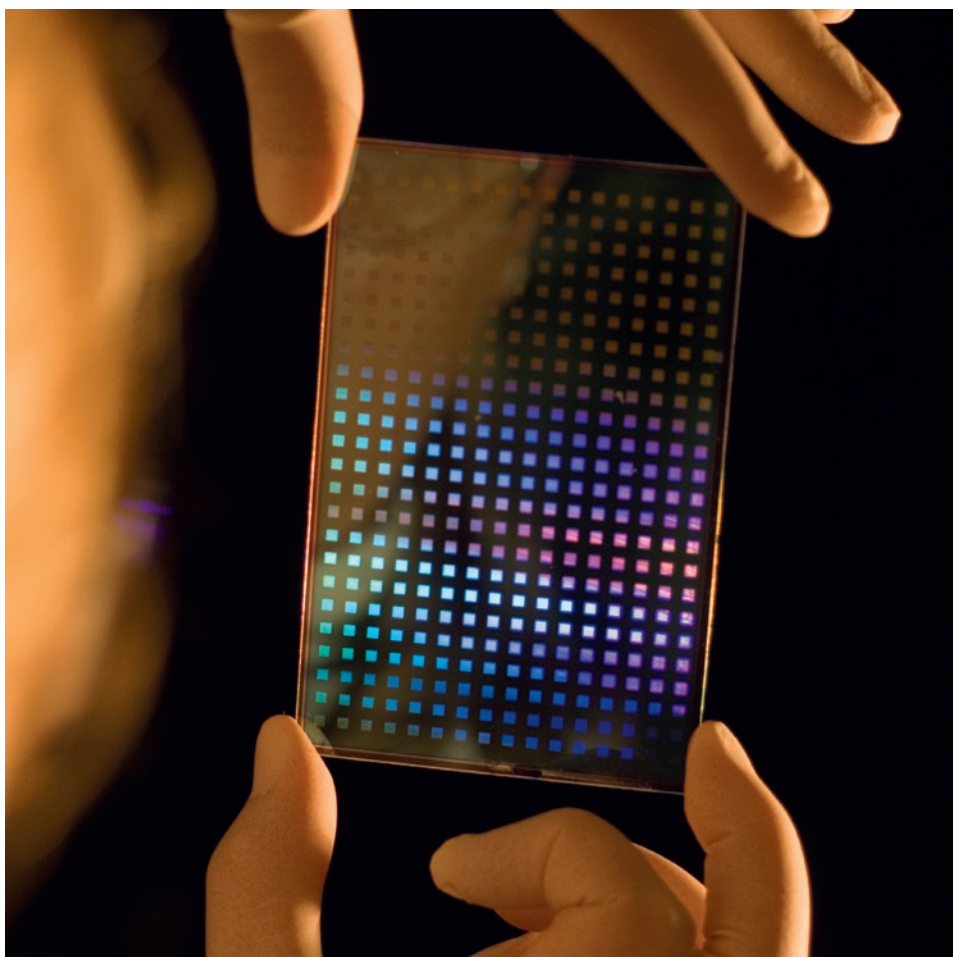


# Corning® Epic® System

Commercial Specifications

Enable a Better Understanding



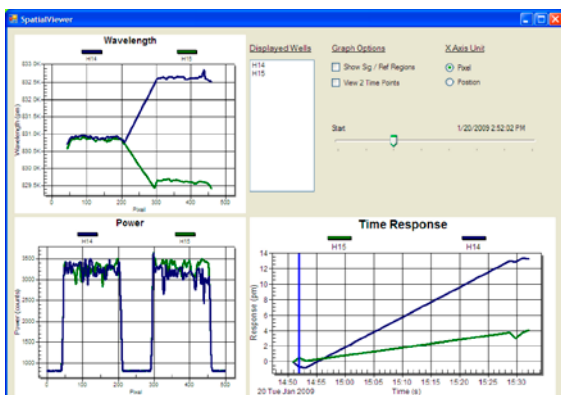
## Overview

- ▶ The Epic System combines proven label-free optical technology with the benefits of high-throughput screening for real-time biochemical and cell-based analysis.
- ▶ The fully-integratable Epic reader and disposable ANSI/SBS-standard 384 well microplates enable throughputs up to 100,000 compounds in 8 hours.
- ▶ Our unique data analysis software grants total control over how data is collected and analyzed – well by well and down to 12  $\mu\text{m}$  at a time.

## Corning® Epic® System Product Information and Specifications<sup>1</sup>

### Epic System Reader

Detection method	Optical biosensor (waveguide resonant grating)
System variability	850 fm
Certification	CE certified
Size (width x length x height)	0.83 m x 1.15 m x 1.98 m
Time to initial read	36 seconds from plate insertion
Single point read time	15 seconds/microplate
Power	115VAC/230VAC, 15A/7.5A
Air supply required	170 CFH at 90 psi, 0°C dewpoint
Operating system	Microsoft® Windows
Operating environment of system	23°C $\pm$ 3°C, <70% non-condensing relative humidity

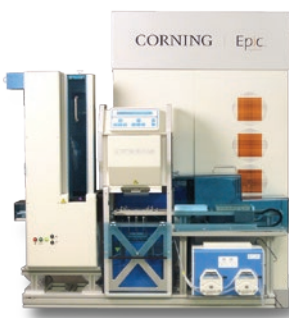


View one well or multiple wells at once with easy-to-understand overview page.

### Epic Data Analysis Software

Epic's free software package provides control over data collection and interpretation enabling users to customize scan itineraries, interrogate individual well responses, and optimize plate performance by fine-tuning assay development. No other label-free screening platform provides such specificity and flexibility in performing real-time biochemical and cell-based assays.

- ▶ Adjustable scan itineraries
- ▶ Assay effects detection in 1D and 2D
- ▶ In-depth views of each well
- ▶ Post-assay data correction



### Corning Epic Liquid Handling Accessory

The Corning Epic Liquid Handling Accessory (LHA) is an automated 384 channel pipettor that integrates with the Epic System. This fully programmable aspirator/dispenser has a working volume of 0.1  $\mu\text{L}$  to 25  $\mu\text{L}$  per well and fills and transports a 384 well microplate in 30 seconds. The LHA's plate stacker can accommodate 20 lidded 384 well standard Epic microplates or source plates, making it ideal for assay development and screening. The LHA maintains thermal stability and includes an automated tip wash station. The LHA also allows for the addition of customized HTS equipment to achieve higher throughputs.

## Corning® Epic® Microplates for Cell-Based Label-Free Assays

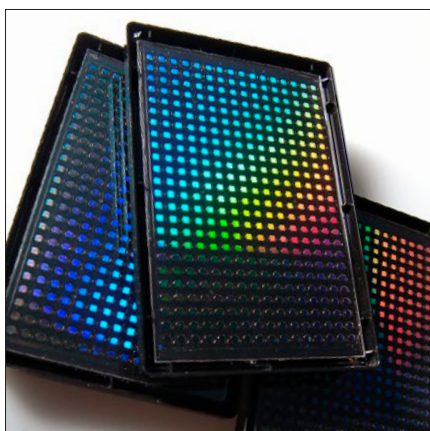
### 384 Well Format

Microplate	Cat. No.	Tissue culture compatible	Assay volume (μL)	Typical seeding density (cells/well)	Storage Conditions	Qty/Case
Epic Cell Assay 384 Well Microplate 10	5040	Yes	25-50	5,000 - 20,000	20-25°C	
Epic Fibronectin-Coated Cell Assay 384 Well Microplate 10	5042	Yes	25-50	5,000 - 20,000	2-8°C	

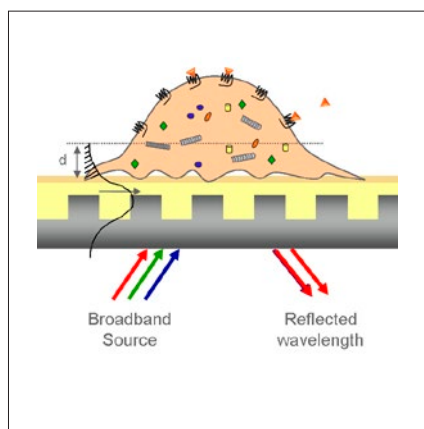
## Corning Epic Microplates for Biochemical Label-Free Assays

Microplate	Cat. No.	Surface	Assay volume (μL)	DMSO Tolerance	Working pH Range	Soak Time Prior to Assay	Storage Conditions	Qty/Case
Epic Biochemical Assay 384 Well Microplate	5041	Amine coupling	~15-30	Up to 5%	4-10	~4 hrs	20-25°C	10
Epic Streptavidin-Coated Biochemical Assay 384 Well Microplate	5047	Streptavidin	~15-30	Up to 5%	4-10	~4 hrs	20-25°C	10
Epic 384 Well High Sensitivity User-Activated Biochemical Assay Microplate	5046	Amine coupling	~15-30	Up to 5%	4-10	~4 hrs	20-25°C	10

Epic microplates are compatible with most aqueous buffers (pH 5.5 - 9.0) and DMSO concentrations ≤5% for at least 24 hours.

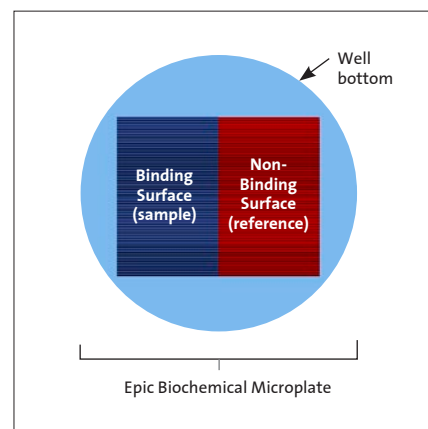


Epic 384 well microplates



### Epic detection principle for cell-based assays

The Epic System measures Dynamic Mass Redistribution (DMR) to monitor real-time changes within 150 to 200 nm of the sensor's surface. The Epic System's ability to provide integrated, pathway unbiased data make it an ideal approach to study a wide range of therapeutic targets in non-engineered cell lines.



### Dual-Sensor Self-Reference Technology

Each well of the Epic microplate also incorporates a patented dual-sensor self-referencing technology that creates a reference area where the target proteins do not attach. This in-well reference enables the Epic System to report a result that represents only the effects of analyte binding.

## Epic® Application Center Support

Two fully integrated application centers are available to help your label-free research be successful. Our labs have performed hundreds of label-free assays and can help your lab with anything from assay development to high-throughput screening and compound profiling.

- ▶ Facilities in both the U.S. and Europe
- ▶ Experience in hundreds of label-free assays
- ▶ Equipment includes microplate hotels, pipetting systems, incubators, washers, and cell-culture materials
- ▶ Fee-for-service available



**Epic Applications Centers are available for fee-for-service assay development, screening and compound profiling.**

**Warranty/Disclaimer:** Unless otherwise specified, all products are for research use only. Not intended for use in diagnostic or therapeutic procedures. Corning Life Sciences makes no claims regarding the performance of these products for clinical or diagnostic applications.



[www.corning.com/lifesciences/solutions](http://www.corning.com/lifesciences/solutions)

At Corning, we continuously strive towards improving efficiencies and developing new products and technologies for life science researchers. From assay preparation to storage, our technical experts understand your challenges and your increased need for high-quality products.

It is this expertise, plus a 160-year legacy of Corning innovation and manufacturing excellence, that puts us in a unique position to be able to offer a beginning-to-end portfolio of high-quality, reliable life sciences consumables.

### Corning Incorporated Life Sciences

836 North St.  
Building 300, Suite 3401  
Tewksbury, MA 01876  
t 800.492.1110  
t 978.442.2200  
f 978.442.2476

[www.corning.com/lifesciences](http://www.corning.com/lifesciences)

### Worldwide Support Offices

#### ASIA/PACIFIC

**Australia/New Zealand**  
t 0402-794-347

**China**  
t 86 21 2215 2888

f 86 21 6215 2988

**India**  
t 91 124 4604000

f 91 124 4604099

#### Japan

t 81 3-3586 1996

f 81 3-3586 1291

#### Korea

t 82 2-796-9500

f 82 2-796-9300

#### Singapore

t 65 6733-6511

f 65 6861-2913

#### Taiwan

t 886 2-2716-0338

f 886 2-2516-7500

#### EUROPE

##### France

t 0800 916 882

f 0800 918 636

##### Germany

t 0800 101 1153

f 0800 101 2427

##### The Netherlands

t 31 20 655 79 28

f 31 20 659 76 73

##### United Kingdom

t 0800 376 8660

f 0800 279 1117

##### All Other European Countries

t 31 (0) 20 659 60 51

f 31 (0) 20 659 76 73

#### LATIN AMERICA

##### Brasil

t (55-11) 3089-7419

f (55-11) 3167-0700

##### Mexico

t (52-81) 8158-8400

f (52-81) 8313-8589

**CORNING** | **FALCON** | **AXYGEN** | **GOSELIN** | **PYREX**

For a listing of trademarks, visit us at [www.corning.com/lifesciences/trademarks](http://www.corning.com/lifesciences/trademarks). All other trademarks are the property of their respective owners.