

OptiSheath® MultiPort Connectorised Block Terminal (CBT) with SST Cable



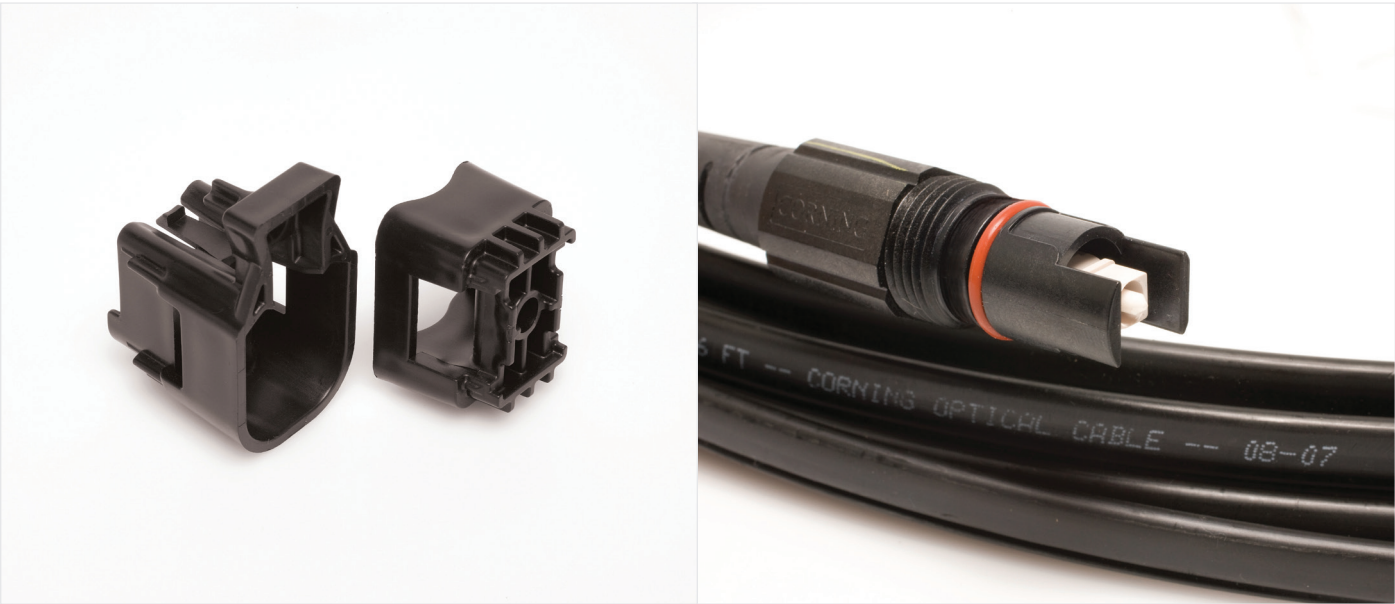
The OptiSheath® MultiPort Connectorised Block Terminal is designed for use in outside plant fibre access networks. This innovative terminal provides sealed environmental protection and fast, easy incremental connection of subscriber drop cables while increasing deployment velocity. Its reliability and flexibility make it the ideal choice for network access point terminals in fibre-to-the-x (FTTx) and access network deployments.

The stubbed terminal consolidates cable access points by routing several terminal stubs to a single splice location. This increases workforce efficiency and reduces the overall installation time required to connect customers in FTTx networks.

The OptiSheath MultiPort Connectorised Block Terminal with SST cable is dedicated for installation in conduits, ducts, on cable racks and aerial applications. The SST cable offer exceptional crush resistance.

Features	Benefits
OptiTap® cable assembly connector ports for customer drop terminations	Lower installation cost and increase speed of customer connection
Available stubbed to various lengths agreed upon with Openreach	Design flexibility and inventory simplicity
Ultrasonically welded housing	Eliminates water ingress potential and prevents unwanted entry in the field
Factory-terminated polished connectors	Eliminates loss associated with excess fusion splices
SST cable	Designed for installation in conduits, ducts, on cable racks and aerial applications

Standards	
Design and Test Criteria	Designed and third-party tested to requirements of Telcordia GR-771-CORE, Issue 1, IEC and Openreach specifications



Specifications

Mechanical Characteristics		
	Dimensions (L x W x H)	Weight
2- and 4-port terminal	274 x 66 x 73 mm (10.8 x 2.6 x 2.9 in)	0.3 kg (0.7 lb)
6- and 8-port terminal	312 x 76 x 86 mm (12.3 x 3.0 x 3.4 in)	0.7 kg (1.5 lb)
12-port terminal	381 x 101 x 147 mm (15.0 x 4.0 x 5.8 in)	1.1 kg (2.4 lb)

Ordering Information

Openreach Item Code	Openreach Description	Corning Part Number	Corning Description
87399	CBT UG 4 Port 50m	MP-010404444SST0050M-BT	Multiport SST 1F- 4P/4H 50M Ultra SC APC-
87400	CBT UG 4 Port 100m	MP-010404444SST0100M-BT	Multiport SST 1F- 4P/4H 100M Ultra SC APC
87401	CBT UG 4 Port 150m	MP-010404444SST0150M-BT	Multiport SST 1F- 4P/4H 150M Ultra SC APC
87402	CBT UG 4 Port 200m	MP-010404444SST0200M-BT	Multiport SST 1F- 4P/4H 200M Ultra SC APC
87403	CBT UG 4 Port 250m	MP-010404444SST0250M-BT	Multiport SST 1F- 4P/4H 250M Ultra SC APC
87404	CBT UG 4 Port 300m	MP-010404444SST0300M-BT	Multiport SST 1F- 4P/4H 300M Ultra SC APC
87405	CBT UG 4 Port 350m	MP-010404444SST0350M-BT	Multiport SST 1F- 4P/4H 350M Ultra SC APC
87406	CBT UG 8 Port 50m	MP-010808444SST0050M-BT	Multiport SST 1F- 8P/8H 50M Ultra SC APC-
87407	CBT UG 8 Port 100m	MP-010808444SST0100M-BT	Multiport SST 1F- 8P/8H 100M Ultra SC APC
87408	CBT UG 8 Port 150m	MP-010808444SST0150M-BT	Multiport SST 1F- 8P/8H 150M Ultra SC APC
87409	CBT UG 8 Port 200m	MP-010808444SST0200M-BT	Multiport SST 1F- 8P/8H 200M Ultra SC APC
87410	CBT UG 8 Port 250m	MP-010808444SST0250M-BT	Multiport SST 1F- 8P/8H 250M Ultra SC APC
87411	CBT UG 8 Port 300m	MP-010808444SST0300M-BT	Multiport SST 1F- 8P/8H 300M Ultra SC APC
87412	CBT UG 8 Port 350m	MP-010808444SST0350M-BT	Multiport SST 1F- 8P/8H 350M Ultra SC APC
87413	CBT UG 12 Port 50m	MP-011212444SST0050M-BT	Multiport SST 1F-12P/12H 50M Ultra SC APC
87414	CBT UG 12 Port 100m	MP-011212444SST0100M-BT	MultiportSST 1F-12P/12H 100M Ultra SC APC
87415	CBT UG 12 Port 150m	MP-011212444SST0150M-BT	Multiport SST1F-12P/12H 150M Ultra SC APC
87416	CBT UG 12 Port 200m	MP-011212444SST0200M-BT	Multiport SST1F-12P/12H 200M Ultra SC APC
87417	CBT UG 12 Port 250m	MP-011212444SST0250M-BT	Multiport SST1F-12P/12H 250M Ultra SC APC
87418	CBT UG 12 Port 300m	MP-011212444SST0300M-BT	Multiport SST1F-12P/12H 300M Ultra SC APC
87419	CBT UG 12 Port 350m	MP-011212444SST0350M-BT	Multiport SST1F-12P/12H 350M Ultra SC APC
88078	CBT UG 4 Port 10m	MP-010404444SST0010M-BT	Multiport SST 1F- 4P/4H 10M Ultra SC APC-
88079	CBT UG 4 Port 20m	MP-010404444SST0020M-BT	Multiport SST 1F- 4P/4H 20M Ultra SC APC-
88080	CBT UG 8 Port 10m	MP-010808444SST0010M-BT	Multiport SST 1F- 8P/8H 10M Ultra SC APC-
88081	CBT UG 8 Port 20m	MP-010808444SST0020M-BT	Multiport SST 1F- 8P/8H 20M Ultra SC APC-
88082	CBT UG 12 Port 10m	MP-011212444SST0010M-BT	Multiport SST 1F-12P/12H 10M Ultra SC APC
88083	CBT UG 12 Port 20m	MP-011212444SST0020M-BT	Multiport SST 1F-12P/12H 20M Ultra SC APC

CORNING

Corning Optical Communications GmbH & Co. KG • Leipziger Strasse 121 • 10117 Berlin, GERMANY
+00 800 2676 4641 • FAX: +49 30 5303 2335 • www.corning.com/opcomm/emea

Corning Optical Communications reserves the right to improve, enhance, and modify the features and specifications of Corning Optical Communications products without prior notification. A complete listing of the trademarks of Corning Optical Communications is available at www.corning.com/opcomm/trademarks. All other trademarks are the properties of their respective owners. Corning Optical Communications is ISO 9001 certified. © 2020 Corning Optical Communications. All rights reserved. CRR-1455-A4-BEN / August 2020