

CORNING

**Centrix™ XL System**

Contents

Centrix™ XL System. . . . . 3

Centrix XL Housings . . . . . 4

    Housings and Cassettes . . . . . 4

    Empty Housings, Rack Mounting . . . . . 5

    Housings with Cassettes, Adapters, and Pigtails . . . . . 6

    Stubbed Housings . . . . . 8

Centrix XL Cassettes. . . . . 10

    Pigtail Splice Cassettes . . . . . 10

    Patch Cassette . . . . . 12

    Stubbed Cassettes with MTP® Connector . . . . . 14

    Splitter Cassettes . . . . . 16

Centrix XL Module with Integrated MTP Adapter . . . . . 13

Centrix XL Jumpers . . . . . 16

Jumper in a Box . . . . . 17

    SC and LC Simplex . . . . . 17

    SC Duplex . . . . . 17

    LC Duplex . . . . . 18

    LC Duplex Reverse Polarity Uniboot . . . . . 18

Centrix XL Hardware . . . . . 19

    Bay Frame Options (19 and 23 inches) . . . . . 19

    Inter-Bay Storage Units and End Cap . . . . . 20

    Inter-Bay Storage Units and UDF End Caps . . . . . 21

Jumper Troughs . . . . . 22

Unequal Distribution Flanges (UDF) . . . . . 23

UDF Inter-Bay Storage Units . . . . . 24

End Caps. . . . . 25

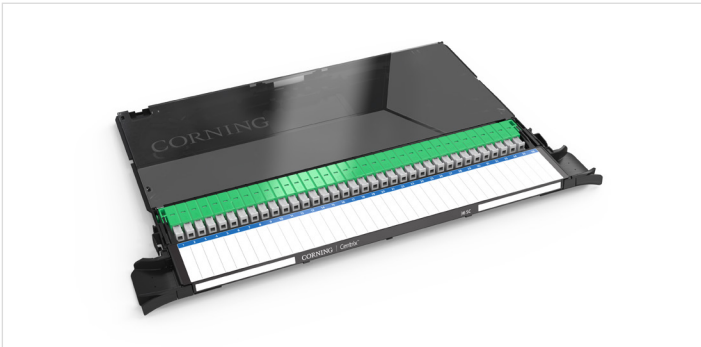
UDF Jumper Troughs . . . . . 26

Centrix XL Resources . . . . . 27





Centrix XL 4U Housing with (12) 48F LC UPC connectors



Centrix XL Cassette with 36F SC APC connectors

Housing Size	1RU	2RU	4RU	8RU
Maximum Density-LC	144F	288F	576F	1,152F
Maximum Density-SC	108F	216F	432F	864F
Cassette Capacity	3	6	12	24

## Ensuring Reliable Fiber Management for Today’s Growing Data Demands

In today’s data-driven world, having a sophisticated fiber management solution is essential to meet growing demands. Corning’s Centrix™ product platform helps define and implement the ideal network approach tailored to your unique requirements, challenges, and goals.

The next-generation Centrix XL System represents a high-density evolution of Corning’s renowned Centrix System. Designed to simplify installations and enhance performance, it supports a range of applications—from central office and headend environments to FTTx deployments and data centers. With a standard 19-inch-wide rack footprint, the Centrix XL system delivers greater density compared to traditional splice or preterminated systems. Its flexibility extends further with options like splitters, WDM, MTP®, and other configurations of preterminated cassettes. Whether accommodating current demands or preparing for future network growth, the Centrix XL System ensures your infrastructure remains reliable.

Features	Benefits
Supports 5,760 LC or 4,320 SC ports per frame	Saves space through increased port density per standard 7-ft frame/2,134 mm.
Available with rear cable and front cable access	Flexible cabling options work in 19- or 23-in racks; front cable access allows back-to-back frame configuration
Modular cassette design	Tailored to include variety of optical devices (splitter, WDM, etc.), enabling one platform for many application spaces
Increased jumper routing space	Supports standard 1.6- and 2.0-mm jumpers (1.6 jumpers are required in a 48F cassette only)
Available with WDM devices	Contact Customer Care to configure wavelength division multiplexing (WDM) devices

# Centrix™ XL Housings and Cassettes



CTX-XL 1U with (3) 48 port LC cassettes, CTX-XL 2U with (6) 48 port LC cassettes, CTX-XL 4U with (12) 48 port LC cassettes

Centrix™ XL housings and cassettes are available in several configurations:

**Housings:**

- Empty
- Loaded with pigtailed cassettes (for splicing)
- Stubbed

**Cassettes:**

- Loaded with adapters and pigtails
- Loaded with patch panels
- Stubbed with 2-m MTP® connectors
- Loaded with integrated MTP 8- and 12-fiber connectors
- Loaded with splitters

Fiber Capacity						
Adapter Type	Terminations per Cassette	Terminations per Housing Size				Terminations per Frame
		1RU	2RU	4RU	8RU	
SC	36	108	216	432	864	4,320
LC	48	144	288	576	1,152*	5,760

\*Not applicable in stubbed hardware configurations

# Centrix™ XL Empty Housings, Rack Mounting



Centrix™ XL 1SU Housing with 19-inch Rack-Mounting Brackets



Centrix XL 2SU Housing with 19-inch Rack-Mounting Brackets



Centrix XL 4SU Housing with 19-inch Rack-Mounting Brackets



Centrix XL 8SU Housing with 19-inch Rack-Mounting Brackets

Empty Centrix XL housings allow for various Centrix XL splice cassette configurations. The cassettes are ordered separately with the desired adapters, single-fiber pigtails, and splice accessories, ready to be deployed in the housing.

## Ordering Information

CTXL - 

1

- 1
- Select Centrix XL rack housings.**

1SU = 1RU, 3 cassette housings, empty

2SU = 2RU, 6 cassette housings, empty

4SU = 4RU, 12 cassette housings, empty

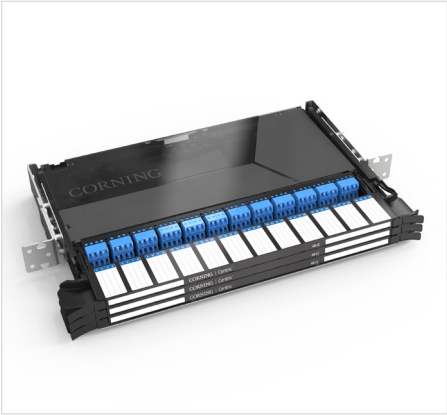
8SU = 8RU, 24 cassette housings, empty

Description	Height Dimensions	Part Number
Centrix XL Housing, 1RU, 3 cassette positions, empty	1.75 in	CTXL-1SU
Centrix XL Housing, 2RU, 6 cassette positions, empty	3.5 in	CTXL-2SU
Centrix XL Housing, 4RU, 12 cassette positions, empty	7 in	CTXL-4SU
Centrix XL Housing, 8RU, 24 cassette positions, empty	14 in	CTXL-8SU

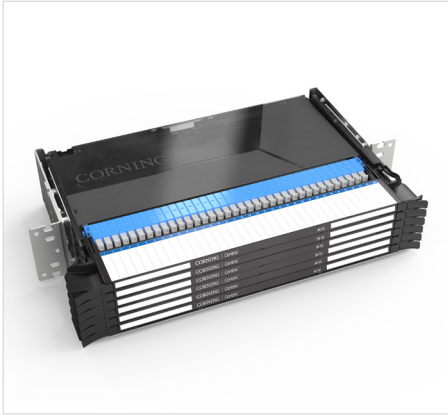
Housing Capacity				
Fibers Per Cassette	CTXL-1U 3 Cassettes	CTXL-2U 6 Cassettes	CTXL-S4U 12 Cassettes	CTXL-8U 24 Cassettes
36	108 (A8)	216 (M6)	432 (WW)	864 (CE)
48	144 (E4)	288 (U8)	576 (AZ)	1152 (DE)*

\*Not applicable in stubbed hardware configurations

# Centrix™ XL Housings with Cassettes, Adapters, and Pigtails



Centrix XL 1U Housing with (3)  
48F LC UPC connectors (Total 144 ports)



Centrix XL 2U Housing with (6)  
36F SC UPC connectors (Total 288 ports)



Centrix XL 4U Housing with (12)  
36F SC UPC connectors (Total 576 ports)

Centrix™ XL loaded housings are available with Centrix XL splice cassettes in different configurations. The cassettes come preloaded with adapters, single-fiber pigtails, and splice accessories, all securely installed in the housing. This streamlines installation time and reduces the need for excess packaging.

Features	Benefits
Loaded housing ready for splicing	Front and top labeling for easy identification
Faster system setup and reduced packaging materials	Transparent covers on both sides of the cassette
Integrated jumper guide supports jumper assembly management	Separated bare fiber and buffer tube slack storage up to 2 m by design
Easy port access and identification	Multiple buffer tube entries from the rear or both sides of the cassette
1RU, 2RU, 4RU and 8RU configurations	Modular design to fit specific in-rack requirements

## Ordering Information for Splice cassettes with pigtails

CXL

1

2

P

3

-

4

-

2

5

R

6

7

000

8

- 1

Select Centrix™ XL housing.

1 = 1U, up to 3 cassette positions  
2 = 2U, up to 6 cassette positions  
4 = 4U, up to 12 cassette positions  
8 = 4U, up to 24 cassette positions
- 2

Select total fiber count.

A8 = 108  
E4 = 144  
M6 = 216  
U8 = 288  
WW = 432  
AZ = 576  
CE = 864  
DE = 1152
- 3

Select fiber count per cassette.

36 = 36 fibers (SC)  
48 = 48 fibers (LCs)
- 4

Select adapter code.

Single-mode:  
6C = SC APC  
3C = SC UPC  
B3 = LC APC  
A9 = LC UPC
- 5

Defines pigtail length.

2 = Standard pigtail
- 6

Defines pigtail type.

R = Single-mode (OS2)
- 7

Select pigtail type.

J = Ribbon  
H = Single-fiber
- 8

Defines Centrix XL splice housing.

000 = Standard
- \*Example configurations provided are for fully loaded pigtailed cassette housings; partially loaded pigtailed cassette housings are available and can be ordered by using a total fiber count value of: the number of cassettes multiplied by the fiber count of the cassette configuration requested. The number of cassettes available per housing must agree with selection [1] and the fiber count of the cassette must agree with selections [3] and [4].

Note: Not all part number configurations are available, please confirm availability with a Corning Customer Operations.

## Centrix™ XL Housings with Cassettes, Adapters, and Pigtails

Description	Part Number
Centrix™ XL Splice Housing, 4U, 12 cassettes each with 36 SC APC adapters and SM pigtails, ribbon standard SM pigtails, total of 432F	CXL4WWP36-6C-2RJ000
Centrix XL Splice Housing, 4U, 12 cassettes each with 48 LC UPC adapters and SM pigtails, 900 µm standard SM pigtails, total of 576F	CXL4AZP48-A9-2RH000
Centrix XL Splice Housing, 1U, 3 cassettes each with 48 LC APC adapters and SM pigtails, 900 µm standard SM pigtails, total of 144F	CXL1E4P48-B3-2RH000

# Centrix™ XL Stubbed Housings



## Ordering Information

CXL             -     00    

1
2
3
4
5
6
7
8
9
10

### 1 Select Centrix™ XL housing.

1 = 1U, 3 cassette positions  
 2 = 2U, 6 cassette positions  
 4 = 4U, 12 cassette positions  
 8 = 8U, 24 cassette positions

### 2 Select total fiber count.

A8 = 108  
 E4 = 144  
 M6 = 216  
 U8 = 288  
 WW = 432  
 AZ = 576  
 CE = 864

### 3 Select stub length.

15 = 15 m (50 ft)  
 23 = 23 m (75 ft)  
 31 = 31 m (100 ft)  
 39 = 39 m (125 ft)  
 54 = 54 m (175 ft)  
 61 = 61 m (200 ft)  
 69 = 69 m (225 ft)  
 84 = 84 m (275 ft)  
 92 = 92 m (300 ft)  
 C2 = 122 m (400 ft)  
 F3 = 153 m (500 ft)

### 4 Select fiber count per cassette.

36 = 36 fibers (SC)  
 48 = 48 fibers (LC)

### 5 Select adapter code.

**Single-mode:**  
 6C = SC APC  
 3C = SC UPC  
 B3 = LC APC  
 A9 = LC UPC

### 6 Defines fiber type.

- = Single-mode (OS2)

### 7 Select cable type.

Reference page 10 for  
 Cable Type Selection

### 8 Defines special configuration.

00 = Standard

### 9 Select the number of cables.<sup>†</sup>

1 = One cable (standard)  
<sup>†</sup>For 8U configurations, it's only applicable  
 one cable.  
 2 = Two cables with full fiber count  
 divided evenly  
<sup>†</sup>Two cables only available for rear  
 cable entry.

### 10 Select cable entry direction.

Standard Access Frame (rear):  
 B = Right, when viewed from the  
 rear (standard)  
 C = Left, when viewed from the rear

Not all part number configurations are available,  
 please confirm availability with a Corning Customer Operations.

Description	Part Number
Centrix™ XL Stubbed 1U Housing, 144F using (3) 48 port LC APC cassettes, SM, FREEDM® LT indoor/outdoor gel-free cable, 16 m stub	CXL1E41648B3-CF001B
Centrix XL Stubbed 2U Housing, 216F using (6) 36 port SC UPC cassettes, SM, FREEDM LT indoor/outdoor gel-free cable, 31 m stub	CXL2M616363C-CF001B
Centrix XL Stubbed 4U Housing, 576F using (12) 48 port LC APC cassettes, SM, ALTOS®, Loose Tube gel-free cable, 2- 16 m stubs	CXL4AZ1648B3-U7002B



## Cable Ordering Details

Cable availability may vary. The following tables are applicable for Centrix™ XL stubbed housings.

### Indoor solutions

Cable Characteristics			Fiber Account						
			1U		2U		4U		8U
			SC	LC	SC	LC	SC	LC	SC
Code	Construction	Jacket	108	144	216	288	432	576	864
81	MIC®	Riser		X					
D9	MIC 250	Plenum		X	X	X	X		
C7	SST-Ribbon™	Riser	X	X	X				
U7	ALTOS® Gel Free Loose Tube	Single Jacket Riser		X	X	X			
V7	SST-UltraRibbon™ Gel Free	Riser				X	X		X
V8	SST-UltraRibbon	Plenum				X	X	X	

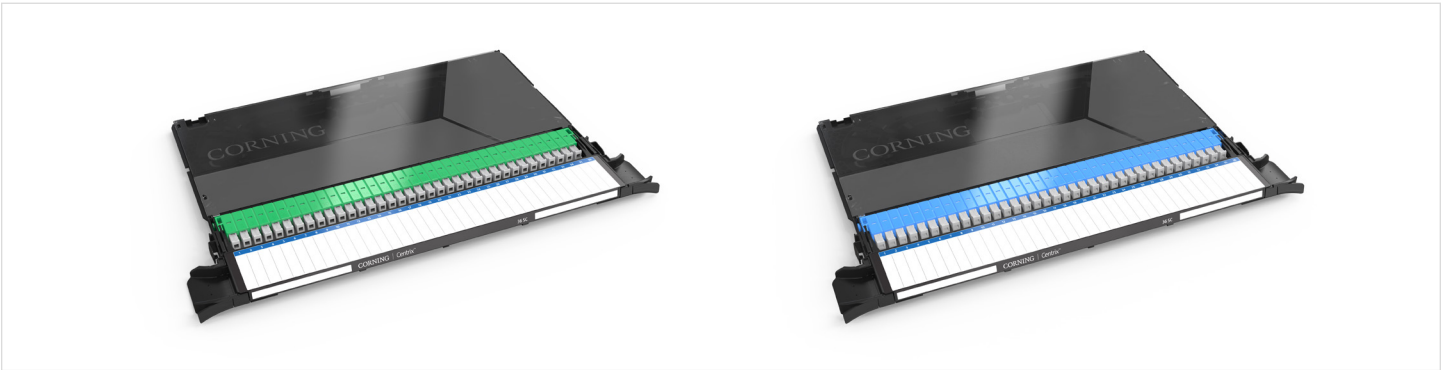
### Indoor/outdoor solutions

Cable Characteristics			Fiber Account						
			1U		2U		4U		8U
			SC	LC	SC	LC	SC	LC	SC
Code	Construction	Jacket	108	144	216	288	432	576	864
CF	SST-Ribbon Gel Free	Freedm Riser		X	X				
M4	MiniXtend®	Single Jacket		X					
UF	ALTOS Gel Free - FREEDM®	Single Jacket Riser	X	X	X	X			
VF	SST-UltraRibbon Gel Free	Freedm Riser				X	X		X

### Outdoor solutions

Cable Characteristics			Fiber Account						
			1U		2U		4U		8U
			SC	LC	SC	LC	SC	LC	SC
Code	Construction	Jacket	108	144	216	288	432	576	864
U4	ALTOS Gel Free Loose Tube	Single Jacket Dielectric	X	X	X	X	X		
UC	ALTOS Gel Free Loose Tube	Single Jacket / Single Armor		X	X	X	X		

# Centrix™ XL Pigtail Splice Cassettes



The Centrix™ XL splice cassette provides single-fiber ports with LC, or SC connectivity. The cassette is loaded with adapters, single-fiber or ribbon pigtails, a splice organizer, and a cover protector. A drop handle provides fiber port protection and jumper labeling on front and top of the cassette allows for easy identification. The cassette slides into Centrix XL housings and is secured with a latch mechanism. The jumper guide is on both sides of the cassette, making jumper routing seamless. The transparent top and bottom covers enable easy handling and visual inspection for troubleshooting with the multiple tube entry points on the cassette allowing for flexible loading of buffer tubes and bare fibers in the cassette.

Features	Benefits
Easy port access and identification	Optimal in-field user experience for moves, adds and changes
Integrated patch cord guide supports patch management	Separated bare fiber and buffer tube slack storage up to 2 m by design
Front and top labeling for easy identification	Multiple fiber entries from the rear or both sides of the cassette

## Ordering Information

CTXL CP P  -  - 2  000

1

2

3

4

5

6

7

- 1

**Defines cassette type.**  
CP = Centrix™ XL cassette with adapters and pigtails
- 2

**Select fiber count per cassette.**  
36 = 36 fibers (SC)  
48 = 48 fibers (LC)
- 3

**Select adapter code.**  
**Single-mode:**  
6C = SC APC  
3C = SC UPC  
B3 = LC APC  
A9 = LC UPC
- 4

**Defines pigtail type.**  
2 = Standard pigtails
- 5

**Defines fiber type.**  
R = Single-mode (OS2)
- 6

**Select pigtail type.**  
J = Ribbon  
H = Single-fiber
- 7

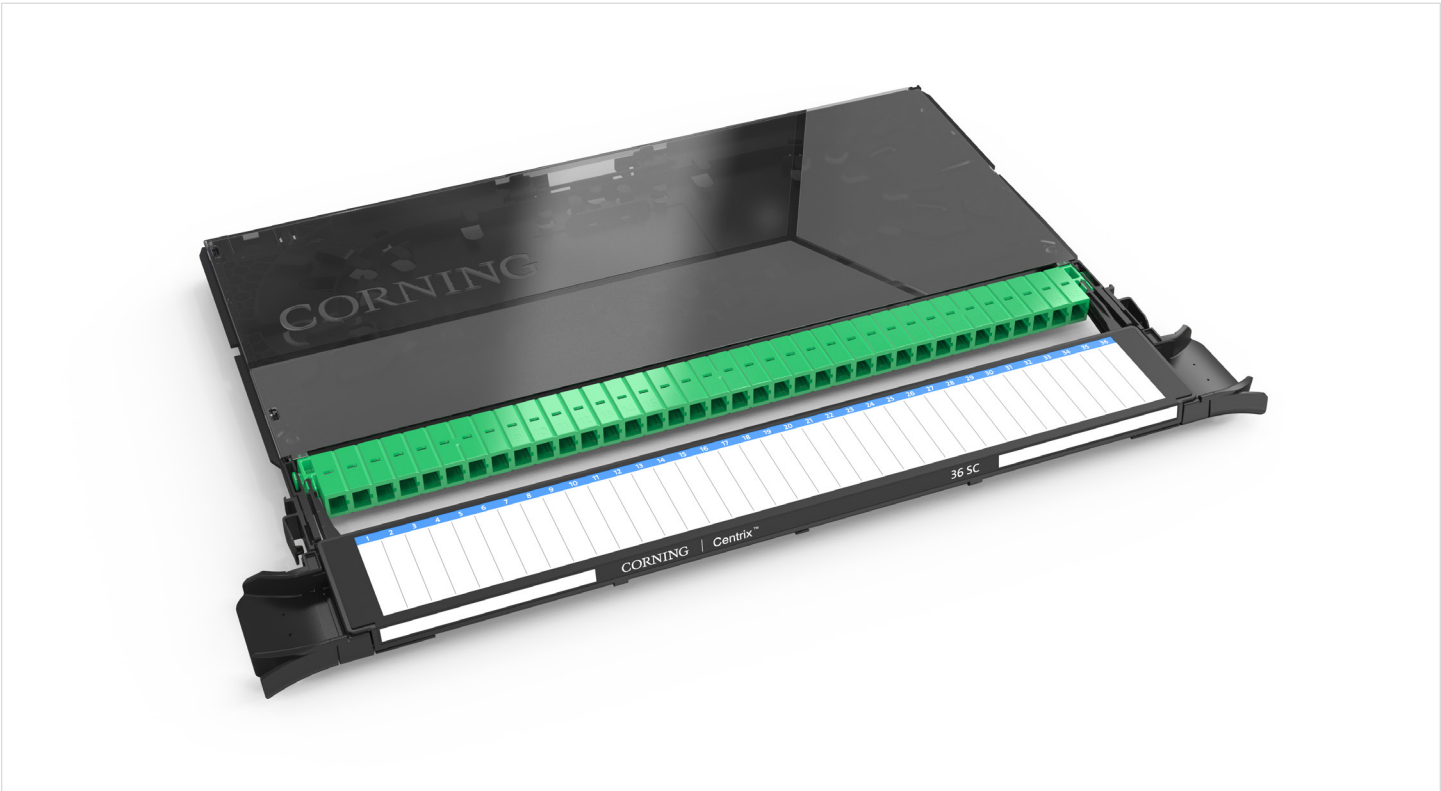
**Defines optical devices.**  
000 = Standard

Not all part number configurations are available, please confirm availability with Corning Customer Operations

Centrix™ XL Pigtail Splice Cassettes

Description	Part Number
Centrix™ XL Splice Cassette with 36 SC APC adapters and SM pigtails, ribbon standard SM pigtails	CTXLCPP36-6C-2RJ000
Centrix XL Splice Cassette with 36 SC APC adapters and SM pigtails, 900 μm standard SM pigtails	CTXLCPP36-6C-2RH000
Centrix XL Splice Cassette with 48 LC APC adapters and SM pigtails, ribbon standard SM pigtails	CTXLCPP48-B3-2RJ000
Centrix XL Splice Cassette with 48 LC UPC adapters and SM pigtails, 900 μm standard SM pigtails	CTXLCPP48-A9-2RH000

Centrix™ XL Patch Cassette



Ordering Information

CTXLCA

1

-

2

3

- 1
- Select total fiber count.\*

24 = 24 fibers (LC or SC)

36 = 36 fibers (LC)

48 = 48 fibers (LC)

\*Access defined by cable OD dimension

- 2
- Select adapter code.

Single-mode:

6C = SC APC

3C = SC UPC

B3 = LC APC

A9 = LC UPC

- 3
- Select cable access type.

Rear Access<sup>†</sup>

B = Rear access

Front Access<sup>‡§</sup>

L = Left front access

R = Right front access

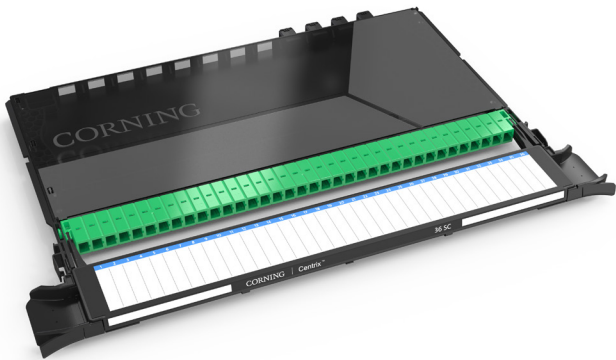
<sup>†</sup>Rear Access will allow for a maximum of 24 SC or 36 LC.

<sup>‡</sup>Front Access will allow for a maximum of 12 SC or 24 LC.

<sup>§</sup>Rear access and front access are MTP® compatible.



Centrix™ XL Module with Integrated MTP® Adapter Ordering Information



CTXL     -       - ULL\*

**1** **2** **3** **4** **5** **6** **7**

- 1 Select fiber count.**

24 = 24 fibers (SC)  
36 = 36 fibers (LC or SC)  
48 = 48 fibers (LC)
- 2 Select adapter code.**

Single-mode:  
6C = SC APC  
3C = SC UPC  
B3 = LC APC  
A9 = LC UPC  
MU = MDC UPC

Multimode:  
AD = LC duplex
- 3 Select predetermined MTP type.**

Single-mode:  
89 = Pinned 12F  
E7 = Pinned 8F\*  
E8 = MTP® 8F (non-pinned) SM

Multimode:  
93 = Pinned 12F

\*Defined by cable access.
- 4 Select MTP quantity.**

Rear Access:  
A – (2) MTP 12 Fibers  
B – (3) MTP 12 Fibers  
C – (4) MTP 12 Fibers  
D – (6) MTP 8 Fibers  
E – (3) MTP 8 Fibers

Front Access:  
F – (2) MTP 12 fibers  
G – (3) MTP 8 Fibers  
H – (3) MTP 12 Fibers
- 5 Select fiber type.**

R = Single-mode (OS2)  
T = 50 µm multimode (OM3)  
Q = 50 µm multimode (OM4)
- 6 Select MTP access type.**

Rear Access:  
B = Rear access frame

Front Access:  
L = Left MTP adapters  
R = Right MTP adapters
- 7 Select polarity.**

R = Classic (Straight Through Polarity)  
U = Universal

\*Note: This is an optional addition for ultra-low-loss modules only.  
Not all part number configurations are available, please confirm availability with a Corning Optical Connectivity Customer Care representative.

Description	Part Number
Centrix™ XL Module, 48 port, LC UPC front facings, pinned, 6 (8 fibers) MPO adapters, SM, rear facing MPO adapters, classic polarity	CTXL48A9-89D6RBR
Centrix XL Module, 36 port, SC APC front facings, pinned, 3 (12 fibers) MPO adapters, SM, rear facing MPO adapters, classic polarity	CTXL366C-89B3RBR
Centrix XL Module, 36 port, LC APC front facings, pinned, 3 (12 fibers) MPO adapters, SM, right side front facing MPO adapters, classic polarity	CTXL36B3-89B3RRR
Centrix XL Module, 24 port, SC APC front facings, pinned, 1 (24 fibers) MPO adapters, SM, right side front facing MPO adapters, classic polarity	CTXL246C-89A1RRR

Centrix™ XL Stubbed Cassettes with MTP® Connector Ordering Information

CTXL

02

-D9-ULL\*

1

2

3

4

5

6

7

8

1 Select fiber count.

- 36 = 36 fibers
- 48 = 48 fibers

2 Defines total fiber count.

- 02 = For MTP® pretermination

3 Select fiber count per cassette.

- 36 = 36 fibers (SC or LC)
- 48 = 48 fibers (LC)

4 Select adapter code.

Single-mode:

- 6C = SC APC
- 3C = SC UPC
- B3 = LC APC
- A9 = LC UPC

5 Defines pigtail length.

- D9 = Single-mode

6 Select preterminated connector type.

- 89 = MTP pinned (MTP standard)
- E7 = MTP 8F pinned (standard) SM
- 90 = MTP unpinned (standard)

7 Select stub quantity.

- 3 = Three cable stubs
- 4 = Four cable stubs
- 6 = Six 8F cable stubs

8 Select cable stub access.

- B = Rear access
- R = Front right access
- L = Front left access

\*Note: This is an optional addition for ultra-low-loss modules only.  
Not all part number configurations are available, please confirm availability with a Corning Customer Operations representative.

Description	Part Number
Centrix™ XL Stubbed Cassette, Front Access Version, 36F, SC APC to 3 MTP®, SM, 12-fiber cable assembly, 2 m	CTXL3602366C-D9893B
Centrix XL Stubbed Cassette, Front Access Version, 48F, LC APC to 4 MTP, SM, 12-fiber cable assembly, 2 m	CTXL480248B3-D9894B

# Centrix™ XL Splitter Cassettes



Centrix™ XL Splitter Cassette | Photo CRR3810

The splitter cassettes are available in various splitter options with LC or SC ports allowing for greater network design flexibility. The integrated splitters are based on planar lightwave circuit technology, which has a compact size suited for density applications. All splitters are compatible with low-bend-loss Corning® ClearCurve® optical fiber (compliant with ITU G.657.A2 standards) with a diameter of 250 µm. The retractable cassette is secured in the housing with a latch mechanism for tool-free installation and removal.

## Ordering Information

CTXL CMA 00 -  - SP

1

2

3

4

5

6

- 1

**Defines cassette type, adapters with splitter devices.**  
CMA = Centrix XL cassette with splitter devices
- 2

00 = Reference place holder
- 3

**Select adapter code.**  
6C = SC APC (36F maximum)  
B3 = LC APC (48F maximum)  
A9 = LC UPC (48F maximum)  
3C = SC UPC (36F maximum)
- 4

**Defines device type.**  
SP = Splitter
- 5

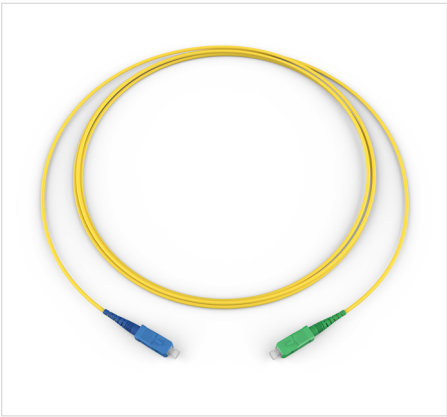
**Select number of devices.**  
1 = 1 - 1 x 32 (LC or SC)  
2 = 2 - 1 x 16 (LC or SC)  
T = 12 - 1 x 2 (LC or SC)  
X = 16 – 1 x 2 LC
- 6

**Select split ratio.**  
102 = 1x2  
104 = 1x4  
108 = 1x8  
116 = 1x16  
132 = 1x32  
232 = 2x32
- Not all part number configurations are available, please confirm availability with a Corning Customer Operations.

## Centrix™ XL Splitter Cassettes

Description	Part Number
Centrix™ XL Splitter Cassette, one 1x32 splitter, SC APC connectors	CTXLCMA00-6C-SP1132
Centrix XL Splitter cassette, two 1x16 splitters, SC APC connectors	CTXLCMA00-6C-SP2116
Centrix XL Splitter cassette, sixteen 1x2 splitters, LC APC connectors	CTXLCMA00-B3-SPX102

Centrix™ XL Jumpers



SC UPC - SC APC



LC APC – LC APC



SC APC – SC APC

Description	Part Number
Jumper, single-mode, SC APC to SC APC, 4 m long, 1.6 mm outer diameter	444401G3116004M
Jumper, single-mode, SC UPC to SC UPC, 4 m long, 1.6 mm outer diameter	585801G3116004M
Jumper, single-mode, LC APC to LC APC, 4 m long, 1.6 mm outer diameter	222201G3116004M
Jumper, single-mode, LC UPC to LC UPC, 4 m long, 1.6 mm outer diameter	020201G3116004M
Jumper, single-mode, LC APC to SC APC, 4 m long, 1.6 mm outer diameter	224401G3116004M

Note: Corning recommends 1.6 mm jumpers for use in the Centrix™ solution. Full-size Centrix frames support 2,880 to 4,320 jumpers predicated on the connector selection. Other configurations are available, please consult Corning Customer Operations for more information.



## SC and LC Simplex | Jumper in a Box Ordering Information

<input type="text"/>	<input type="text"/>	<input type="text"/>	<input type="text"/>	-	<b>SR 2</b>	-	<input type="text"/>	<input type="text"/>	<input type="text"/>	-	<input type="text"/>	<input type="text"/>	<input type="text"/>
<b>1</b>					<b>2</b>		<b>3</b>				<b>4</b>	<b>5</b>	

### 1 Select connector code.

#### Single-mode

0202 = LC UPC  
 2222 = LC APC  
 2244 = LC APC/SC APC  
 4444 = SC APC  
 5858 = SC UPC

### 2 Defines cable and fiber type.

SR2 = Simplex R 1.6 mm,  
 Single-mode (OS2)

### 3 Select quantity. Quantity per box is determined by length.

#### P = Plastic Box

P70 = 1–5 m or 1–16 ft  
 P50 = 6–10 m or 17–35 ft  
 P40 = 11–15 m or 36–52 ft  
 P30 = 16–20 m or 53–66 ft

#### R = Refill

R70 = 1–5 m or 1–16 ft  
 R50 = 6–10 m or 17–35 ft  
 R40 = 11–15 m or 36–52 ft  
 R30 = 16–20 m or 53–66 ft

### 4 Select jumper length\*.

01–20 m  
 01–65 ft

\* Maximum length is 20 m or 65 ft.

### 5 Select unit of measure.

F = Feet  
 M = Meters

## SC Duplex | Jumper in a Box Ordering Information

<input type="text"/>	<input type="text"/>	<input type="text"/>	<input type="text"/>	-	<input type="text"/>	<input type="text"/>	<input type="text"/>	-	<input type="text"/>	<input type="text"/>	<input type="text"/>	-	<input type="text"/>	<input type="text"/>	<input type="text"/>
<b>1</b>					<b>2</b>				<b>3</b>				<b>4</b>	<b>5</b>	

### 1 Select connector code.

#### Multimode Duplex

5757 = SC PC

#### Single-mode Duplex

7272 = SC UPC

### 2 Defines cable and fiber type.

ZR4 = 2.0 mm Zipcord R MM OM4  
 ZR3 = 2.0 mm Zipcord R MM OM3  
 ZR2 = 2.0 mm Zipcord R SM OS2  
 ZR1 = 2.0 mm Zipcord R MM OM1

### 3 Select quantity. Quantity per box is determined by length.

#### P = Plastic Box

P60 = 1–2 m or 1–7 ft  
 P50 = 3–4 m or 8–13 ft  
 P40 = 5–6 m or 14–20 ft  
 P35 = 7–8 m or 21–26 ft  
 P30 = 9–10 m or 27–33 ft

#### R = Refill

R60 = 1–2 m or 1–7 ft  
 R50 = 3–4 m or 8–13 ft  
 R40 = 5–6 m or 14–20 ft  
 R35 = 7–8 m or 21–26 ft  
 R30 = 9–10 m or 27–33 ft

### 4 Select jumper length\*.

01–10 m  
 01–33 ft

\* Maximum length is 10 m or 33 ft.

### 5 Select unit of measure.

F = Feet  
 M = Meters

## LC Duplex | Jumper in a Box Ordering Information

<input type="text"/>	<input type="text"/>	<input type="text"/>	<input type="text"/>	-	<input type="text"/>	<input type="text"/>	<input type="text"/>	-	<input type="text"/>	<input type="text"/>	<input type="text"/>	-	<input type="text"/>	<input type="text"/>	<input type="text"/>
<b>1</b>					<b>2</b>				<b>3</b>				<b>4</b>	<b>5</b>	

### 1 Select connector code.

#### Multimode Duplex

0505 = LC PC

#### Single-mode Duplex

0404 = LC UPC

### 2 Defines cable and fiber type.

ZR4 = 2.0 mm Zipcord R MM OM4

ZR3 = 2.0 mm Zipcord R MM OM3

ZR2 = 2.0 mm Zipcord R SM OS2

ZR1 = 2.0 mm Zipcord R MM OM1

### 3 Select quantity. Quantity per box is determined by length.

#### P = Plastic Box

P70 = 1 m or 3 ft

P60 = 2 m or 4–7 ft

P50 = 3–5 m or 8–16 ft

P40 = 6–8 m or 17–26 ft

P30 = 9–10 m or 27–33 ft

#### R = Refill

R70 = 1 m or 3 ft

R60 = 2 m or 4–7 ft

R50 = 3–5 m or 8–16 ft

R40 = 6–8 m or 17–26 ft

R30 = 9–10 m or 27–33 ft

### 4 Select jumper length\*.

01–10 m

01–33 ft

\* Maximum length is 10 m or 33 ft.

### 5 Select unit of measure.

F = Feet

M = Meters

## LC Duplex Reverse Polarity Uniboot | Jumper in a Box Ordering Information

<input type="text"/>	<input type="text"/>	<input type="text"/>	<input type="text"/>	-	<input type="text"/>	<input type="text"/>	<input type="text"/>	-	<input type="text"/>	<input type="text"/>	<input type="text"/>	-	<input type="text"/>	<input type="text"/>	<input type="text"/>
<b>1</b>					<b>2</b>				<b>3</b>				<b>4</b>	<b>5</b>	

### 1 Select connector code.

#### Multimode Duplex

7979 = LC PC Uniboot

#### Single-mode Duplex

7878 = LC UPC Uniboot

### 2 Defines cable and fiber type.

OM4 = DFX 250 R MM OM4

OM3 = DFX 250 R MM OM3

OS2 = DFX 250 R SM OS2, Corning® ClearCurve®

### 3 Select quantity. Quantity per box is determined by length.

#### P = Plastic Box

P70 = 1–5 m or 1–16 ft

P50 = 6–10 m or 17–35 ft

P40 = 11–15 m or 36–52 ft

P30 = 16–20 m or 53–66 ft

#### R = Refill

R70 = 1–5 m or 1–16 ft

R50 = 6–10 m or 17–35 ft

R40 = 11–15 m or 36–52 ft

R30 = 16–20 m or 53–66 ft

### 4 Select jumper length\*.

01–20 m

01–65 ft

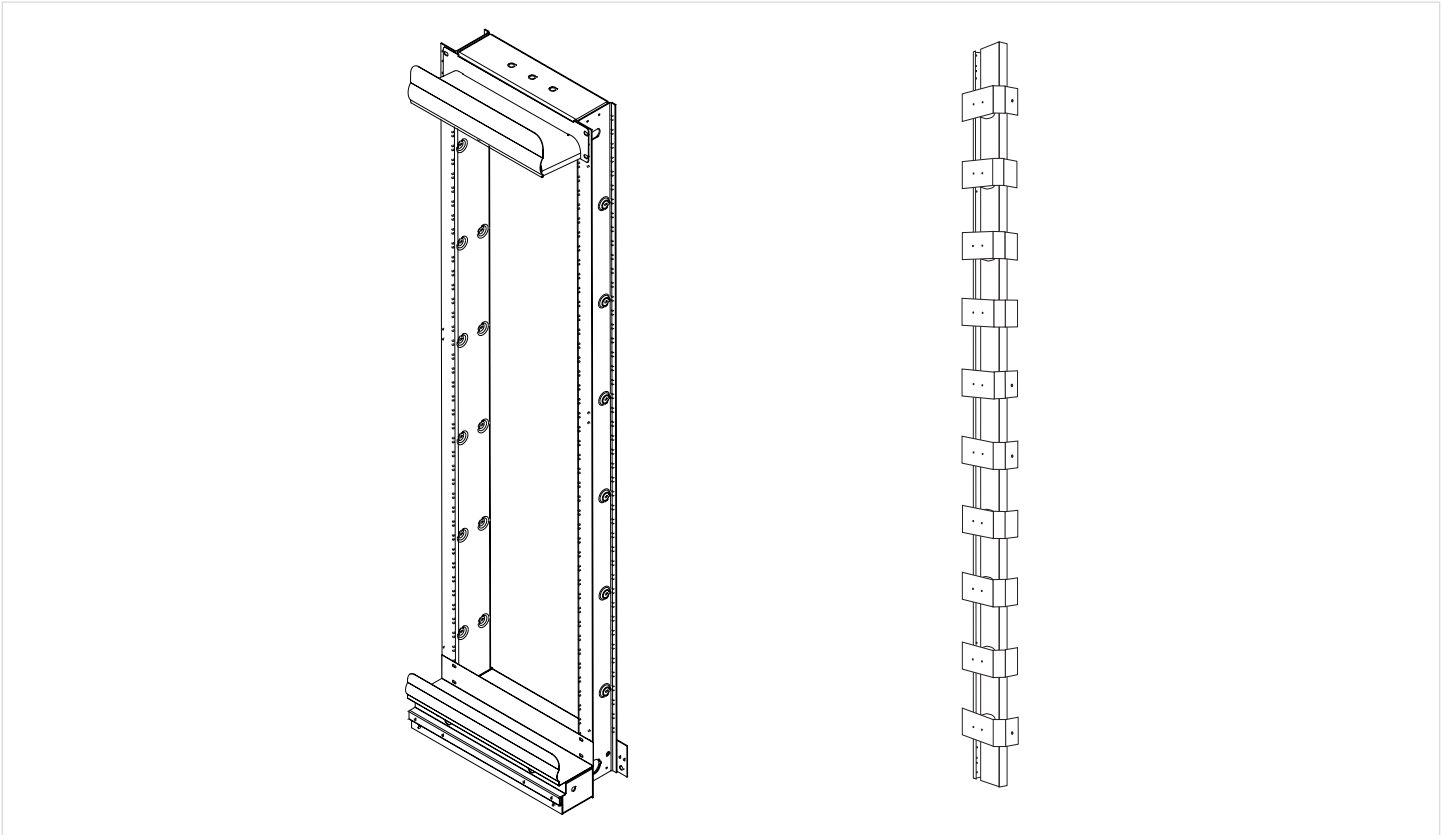
\* Maximum length is 20 m or 65 ft.

### 5 Select unit of measure.

F = Feet

M = Meters

## Centrix™ XL Hardware Bay Frame Options (19 and 23 inches)



ECL-BAY-7 Network Bay and UDF RBS-07-075 Rear-Bay Storage Unit | Drawings ZA-1546 and ZA-1265

The Centrix™ XL Hardware network bay frame is designed around a 19-in spaced unequal flange frame with wide flange side (front) and narrow flange side (rear). Each 7-ft frame will accommodate a total of 44 units or rack spaces. A zone 4-rated frame is also available. For Centrix XL 19- and 23-inch Hardware compatible frames and hardware in a 23-in option, see the UDF frame section starting on page 23. Centrix XL 19- and 23-inch top and bottom troughs are available in 23-in and are UDF frame compatible. See page 26. Centrix XL Hardware frames are compatible with Newton Instrument Co. insulator pad 0041170010.

### Specifications

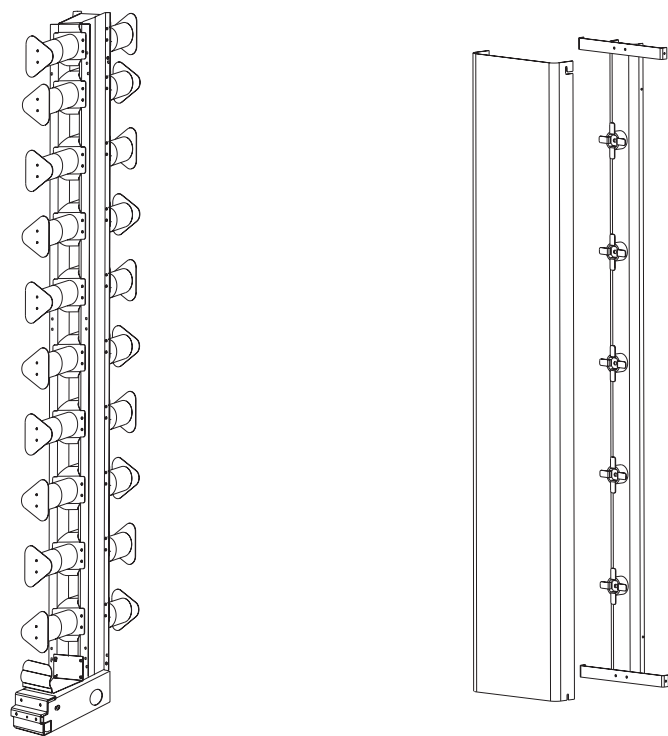
Description	Part Number
7-ft, 19-in bay (includes frame and top and bottom jumper troughs)	ECL-BAY-7
7-ft, 19-in EIA bay; Zone 4-rated (includes frame and 2U top and bottom jumper troughs)	ECL-BAY-7-Z4

Note: Order housings for termination and splicing separately.

### Centrix XL Hardware Network Bay Frames

Part Number	Dimensions (HxWxD)	Dimensions (A)	Dimensions (B)	Weight
ECL-BAY-7	213.4 x 55.6 x 24.4 cm (84 x 21.9 x 9.6 in)	44.45 cm (17.50 in)	46.50 cm (18.31 in)	90.7 kg (200 lb)
ECL-BAY-7-Z4	213.4 x 55.6 x 24.4 cm (84 x 21.9 x 9.6 in)	44.45 cm (17.50 in)	38.90 cm (18.31 in)	90.7 kg (200 lb)

Centrix™ XL Hardware Inter-Bay Storage Units and End Caps



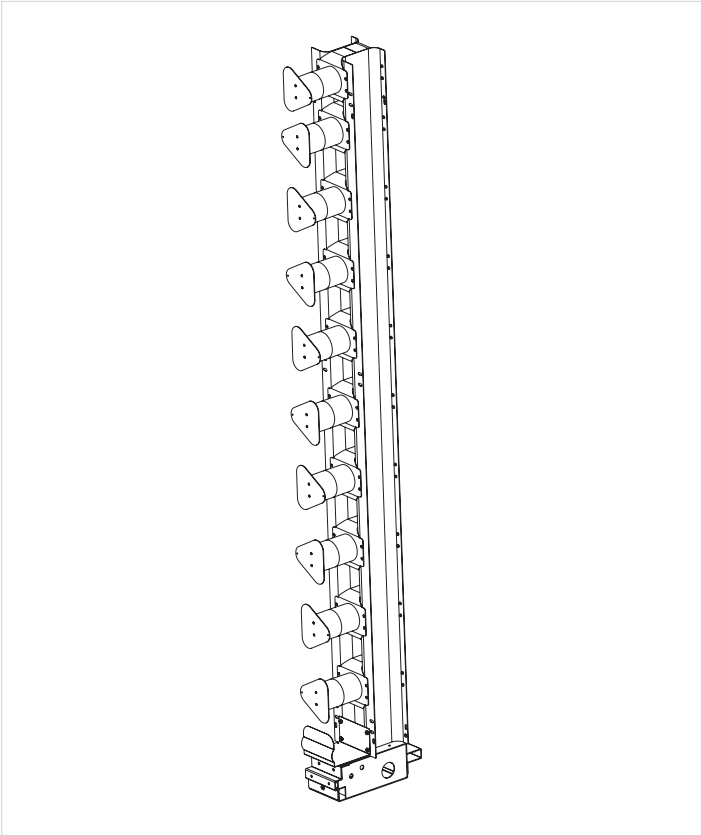
ECL-IBD-7-1 Inter-Bay Storage Units and ECL-EC-7 End Cap | Drawings ZA-1883 and ZA-1917 can also be used with ECL-BAY-7

The ECL-IBD offers an innovative new approach to fiber management in the Centrix™ XL Hardware frame system. This dual-sided inter-bay unit features nine routing hubs on both the front and rear with fiber pass-through access throughout. When installed next to a hardware bay unit, a rear channel is available for routing cables to patch panels located in the bay. As with other hardware products, the ECL-IBD protects fiber bend radius throughout the unit, ensuring fiber performance and signal integrity. The ECL-EC-7 offers fiber storage within the end cap through a shell design. The outer shell of the unit offers a finished appearance while the inner shell is equipped with routing hubs for storage and routing of fiber. This unit may be mounted to the ECL-IBD unit only. All Centrix XL hardware is focused on a 7-ft solution. If another solution is needed, please refer to our UDF solution on page 23.

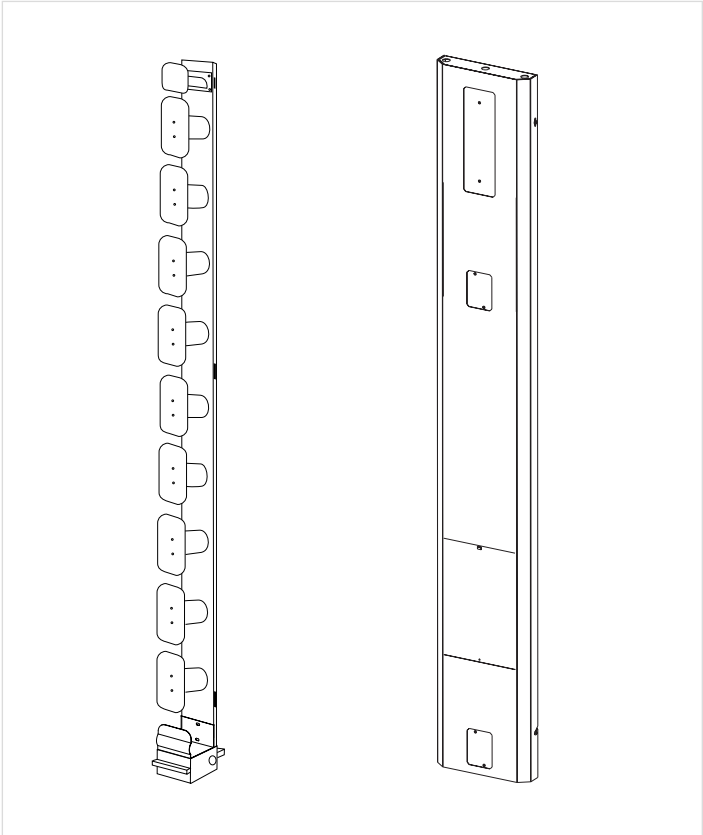
Part Number	Description	Dimensions (HxWxD)
ECL-IBD-7-1	Centrix XL Inter-Bay Storage Unit, with dual-sided mandrels with triangular caps	213.4 x 12.1 x 15.2 cm
ECL-EC-7	Centrix XL 7-ft End Cap for use with ECL-IBD-7-1	213.4 x 8.9 x 39.1 cm



# Centrix™ XL Hardware Inter-Bay Storage Units and UDF End Caps



ECL-IBS-07-1 Inter-Bay Storage Unit | Drawing ZA-3830

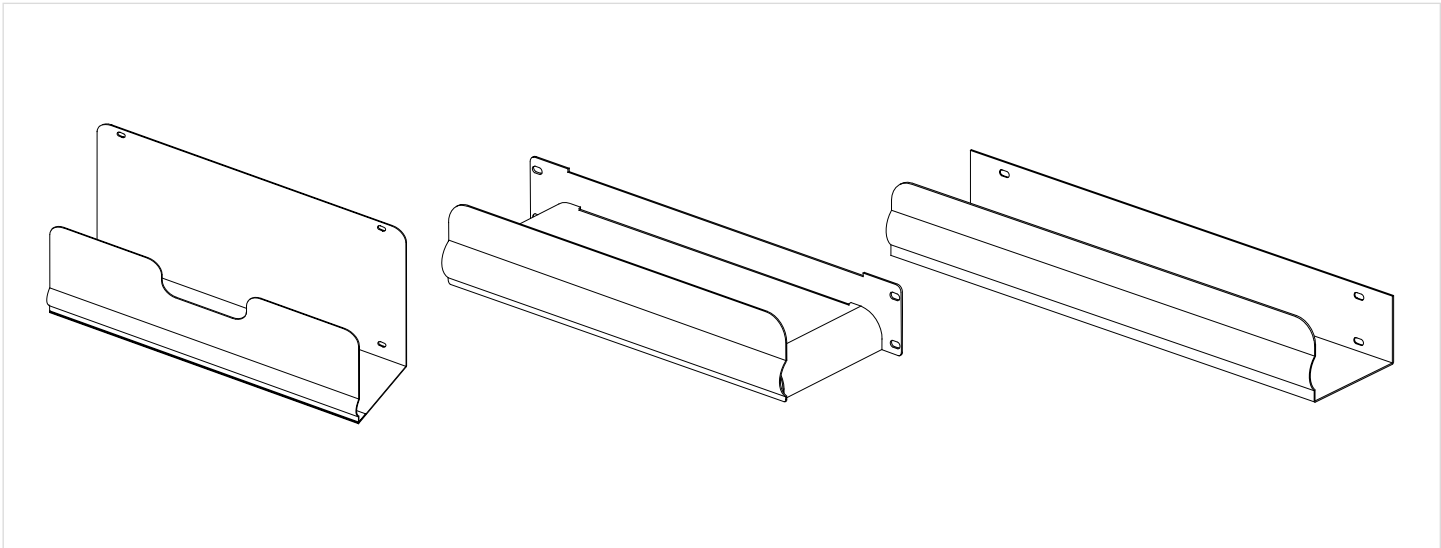


ECL-IBU-7-1 Inter-Bay | Drawing ZA-1549  
UDF-ECO-07-075 End Cap | Drawing ZA-1882

The Centrix™ XL Hardware System includes two inter-bay storage (IBS) units designed to route and manage jumpers within a bay line-up. The ECL-IBS is designed for fiber management on the front of the bay lineup only. End cap units in the Centrix XL Hardware product family offer a finished appearance to a UDF hardware bay lineup. The UDF-ECO includes cutouts which enable easy installation of light switches and alarm/indicator lamps. It may be mounted to the UDF-BAY frames or UDF-IBS units.

Part Number	Description	Dimensions (HxWxD)
ECL-IBS-7-1	Centrix XL Hardware Inter-Bay Storage Unit, ACS with single-sided mandrels with triangular caps	213.4 x 12.1 x 15.2 cm
ECL-IBU-7-1	Centrix XL Hardware Inter-Bay Storage Unit with 2U jumper trough with single-sided mandrels with oblong caps	213.4 x 12.1 x 15.2 cm
UDF-ECO-07-075	Centrix XL Hardware 7-ft End Cap	213.4 x 7.6 x 30.5 cm

# Jumper Troughs

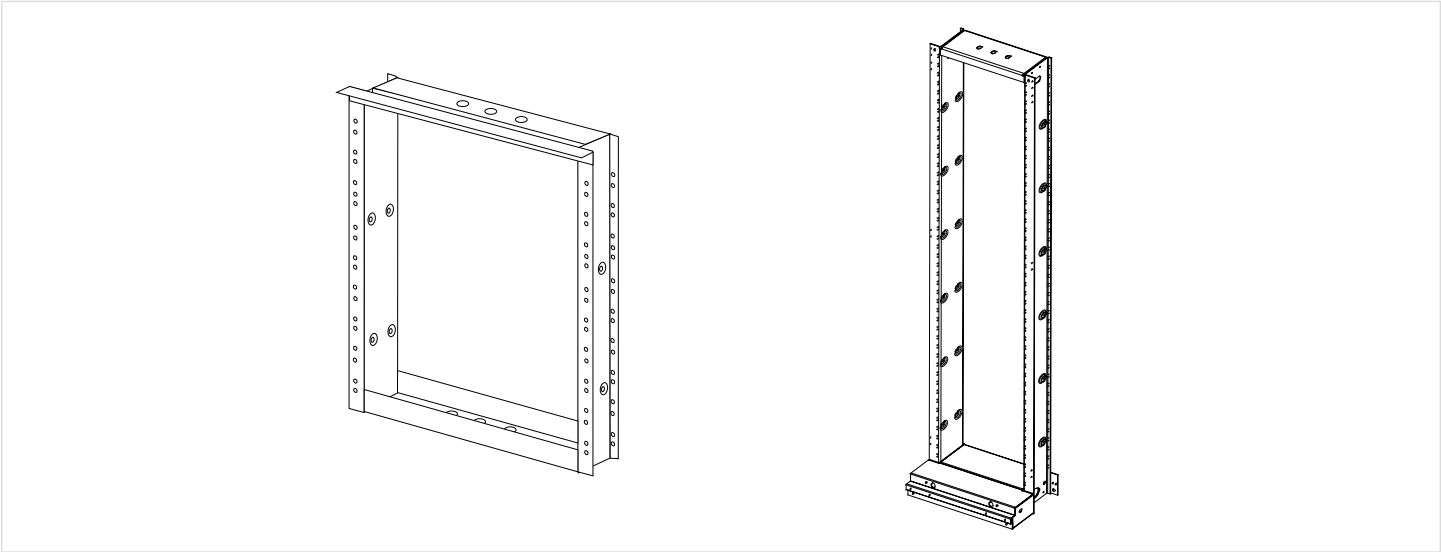


ECL-B6U-19 Bottom Trough | Drawing ZA-1536, ECL-T2U-19 Upper Trough | Drawing ZA-1538, ECL-B2U-19 | Drawing ZA-1535

The Centrix™ XL Hardware Network Bay is equipped with default top and bottom jumper troughs: 19-in, 2-rack-space tall troughs. However, several other troughs are available for different frame configurations.

Description	Part Number
Top Jumper Trough, 2-rack-space tall (2U), 19 in	ECL-T2U-19
Top Jumper Trough, 2-rack-space tall (2U), 23 in	ECL-T2U-23
Bottom Jumper Trough, 2-rack-space tall (2U), 19 in	ECL-B2U-19
Bottom Jumper Trough, 2-rack-space tall (2U), 23 in	ECL-B2U-23

## Unequal Distribution Flanges (UDF)



UDF-EXT-19E-02-075 and UDF-ERO-19E-07-075 | Drawings ZA-1628 and ZA-1532

The versatility of the Centrix™ XL hardware product family may be optimized through the use of Corning unequal distribution flange (UDF) frames and components. The UDF family offers EIA standard 19- and 23-in frames in 7- and 8-ft configurations that may be expanded into 9- and 11.5-ft frame applications. All UDF components are painted wrinkle black, matching the Centrix XL hardware product line for maximum aesthetic appeal.

## Network Bay Frames

Part Number	Description	Dimensions (HxWxD)
UDF-BAY-19E-07-075	19-in Unequal Flange Frame; 7 ft, EIA	213.4 x 55.6 x 24.4 cm (84 x 21.9 x 9.6 in)
UDF-BAY-19E-07-Z75	19-in Unequal Flange Frame; 7 ft, EIA, Zone 4	213.4 x 55.6 x 24.4 cm (84 x 21.9 x 9.6 in)
UDF-BAY-23E-07-Z75	23-in Unequal Flange Frame; 7 ft, EIA, Zone 4	213.4 x 65.8 x 25.7 cm (84 x 25.9 x 10.1 in)
UDF-BAY-23E-07-075	23-in Unequal Flange Frame; 7 ft, EIA	213.4 x 65.8 x 25.7 cm (84 x 25.9 x 10.1 in)

## Network Bay Frame Extensions

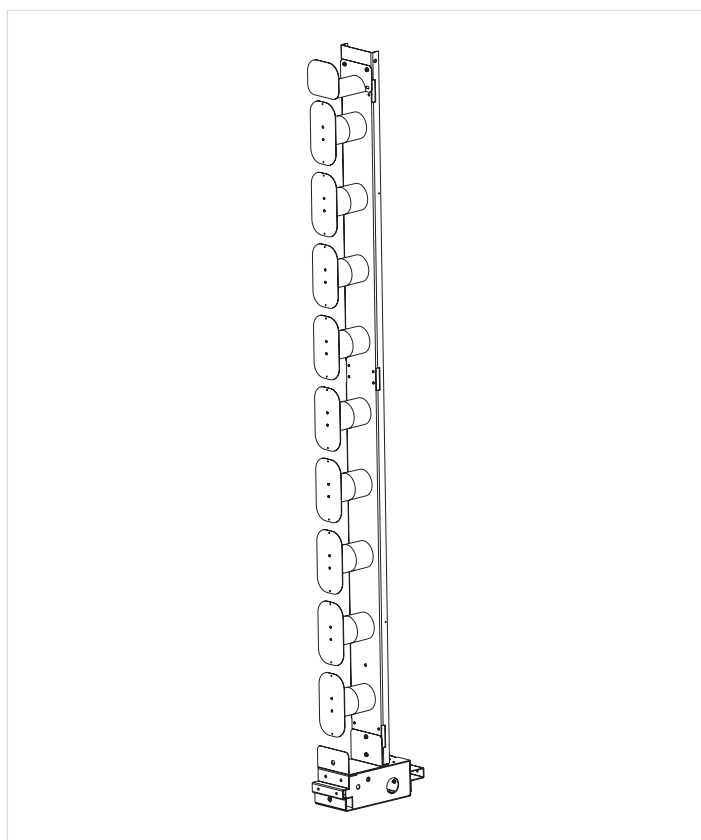
Part Number	Description	Dimensions (HxWxD)
UDF-EXT-19E-02-075	19-in Unequal Flange Frame Extension; 2 ft	60.9 x 55.6 x 24.4 cm (24 x 21.9 x 9.6 in)
UDF-EXT-19E-04-075	19-in Unequal Flange Frame Extension; 4.5 ft	137 x 55.6 x 24.2 cm (54 x 21.9 x 9.6 in)
UDF-EXT-23E-02-075	23-in Unequal Flange Frame Extension; 2 ft	60.9 x 65.8 x 25.7 cm (24 x 25.9 x 10.1 in)

Notes:

- 1) 2-ft extension has 10U of usable rail space; 4.5-ft extension has 26U of usable rail space.
- 2) UDF frames are compatible with Newton Instrument Co. insulator pad 0041170010 for 19-in frames and insulator pad 0041180010 for 23-in frames.
- 3) UDF bays include standard UDF troughs instead of Centrix XL Hardware troughs.

## UDF Inter-Bay Storage Units

The UDF-IBD offers an innovative approach to fiber management in the Centrix™ XL Hardware frame system. This dual-sided inter-bay unit features nine routing hubs on both the front and rear with fiber pass-through access throughout. When installed next to a UDF hardware bay unit, a rear channel is available for routing cables to patch panels located in the bay. As with other UDF hardware products, the UDF-IBD protects fiber bend radius throughout the unit, ensuring fiber performance and signal integrity. Inter-bay storage units are available in 7- and 8-ft sizes with 2- and 4.5-ft extensions available.



UDF-IBS-07-075 Inter-Bay | Drawing ZA-3829  
Use with ECL-BAY-1 & ECL-IBS-7-1

## Inter-Bay Storage Units

Part Number	Description	Dimensions (HxWxD)
UDF-IBS-07-075	7-ft Inter-Bay Storage Unit, front management only	213.4 x 12.1 x 15.2 cm (84 x 5 x 6 in)
UDF-IBS-08-075	8-ft Inter-Bay Storage Unit, front management only	243.8 x 12.1 x 15.2 cm (96 x 5 x 6 in)
UDF-IBD-07-075	7-ft Dual-Sided Inter-Bay Storage Unit, front and rear management	213.4 x 12.7 x 38.9 cm (84 x 8 x 15.4 in)
UDF-IBD-08-075	8-ft Dual-Sided Inter-Bay Storage Unit, front and rear management	243.8 x 12.7 x 38.9 cm (96 x 5 x 15.4 in)

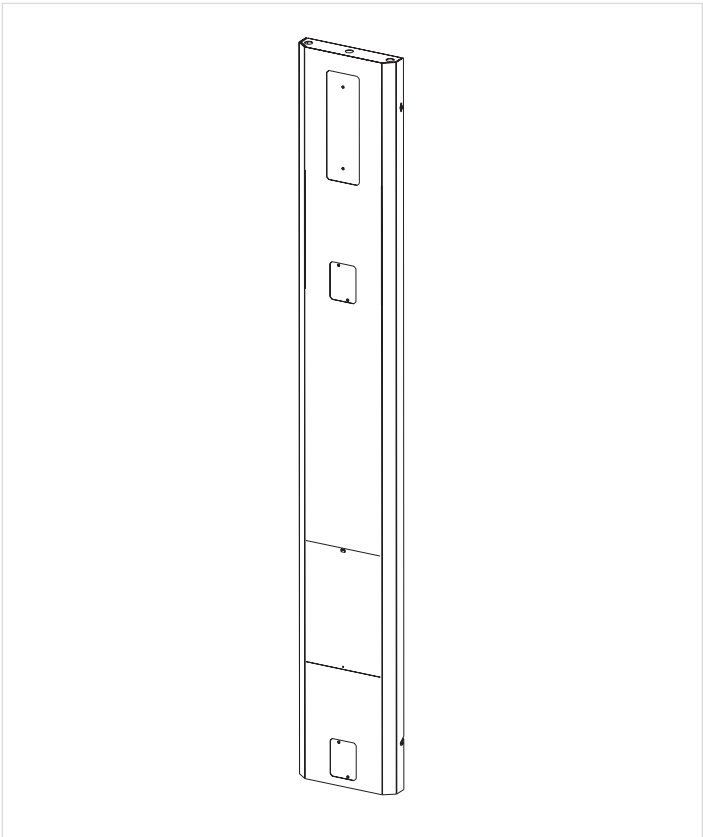
## Inter-Bay Storage Unit Extensions

Part Number	Description	Dimensions (HxWxD)
UDF-IBE-02-075	2-ft Inter-Bay Storage Unit Extension, front management only	60.9 x 12.1 x 15.2 cm (24 x 5 x 6 in)
UDF-IBE-04-075	4.5-ft Inter-Bay Storage Unit Extension, front management only	137 x 12.1 x 15.2 cm (54 x 5 x 6 in)
UDF-IBD-02-075	2-ft Dual-Sided Inter-Bay Storage Unit Extension, front and rear management	60.9 x 12.7 x 38.9 cm (24 x 5 x 15.4 in)
UDF-IBD-04-075	4.5-ft Dual-Sided Inter-Bay Storage Unit Extension., front and rear management	137 x 12.7 x 38.9 cm (54 x 5 x 15.4 in)



## End Caps

End cap units in the Centrix™ XL Hardware product family offer a finished appearance to a UDF hardware bay lineup. The UDF-ECO includes cutouts which enable easy installation of light switches and alarm/indicator lamps. It may be mounted to the UDF-BAY frames or to the ECLIBS units.

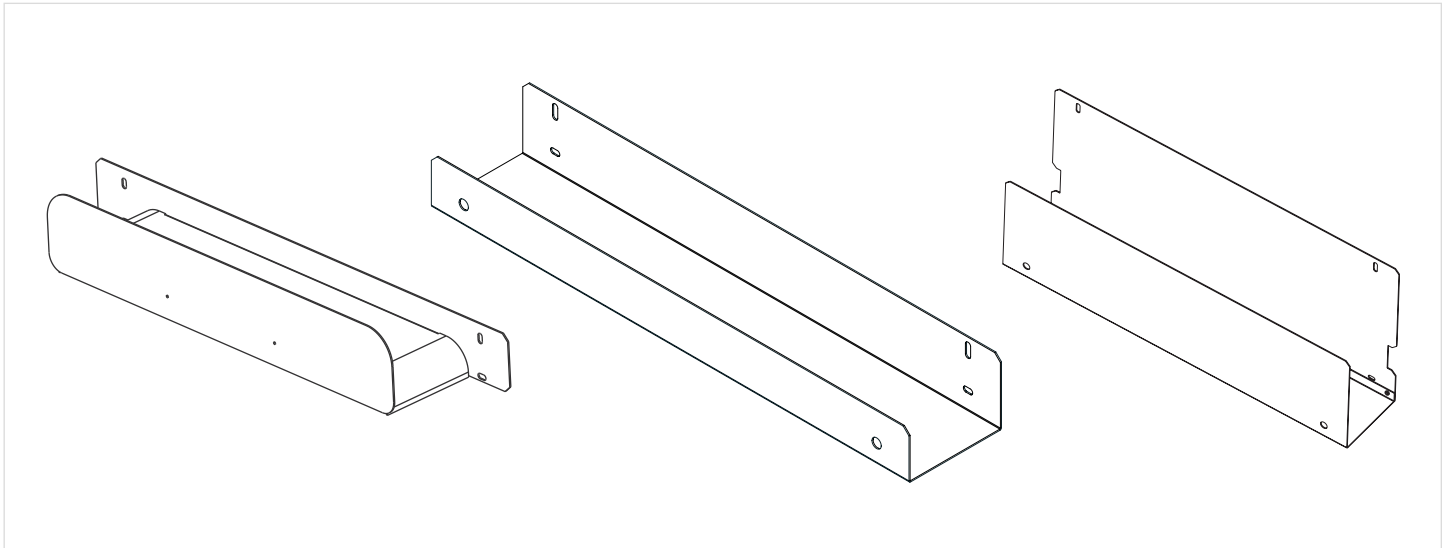


UDF-ECO-07-075 End Cap | Drawing ZA-1882  
Use with ECL-BAY-1 & ECL-IBS-7-1

## End Caps

Part Number	Description	Dimensions (HxWxD)
UDF-ECO-08-075	8-ft End Cap	243.9 x 7.6 x 30.5 cm (96 x 3 x 12 in)

# UDF Jumper Troughs



UDF-JUS Standard Upper Trough | Drawing ZA-3508, UDF-JBS Standard Bottom Trough | Drawing ZA-2849, UDF-JBX Deep Bottom Trough | Drawing ZA-2148

The Centrix™ XL Hardware network bay is compatible with the UDF jumper trough. Several other troughs are available for different frame configurations.

Part Number	Description	Dimensions (HxWxD)
UDF-JUS-19-075	Standard Upper Trough for 19-in frame	10.1 x 55.4 x 12.7 cm (3.97 x 21.8 x 5 in)
UDF-JBS-19-075	Standard Bottom Trough for 19-in frame	8.8 x 55.4 x 12.7 cm (3.47 x 21.8 x 5 in)
UDF-JBX-19-075	Deep Bottom Trough for 19-in frame	29.1 x 55.4 x 12.7 cm (11.5 x 21.8 x 5 in)
UDF-JUS-23-075	Standard Upper Trough for 23-in frame	10.1 x 65.6 x 12.7 cm (3.97 x 25.8 x 5 in)
UDF-JBS-23-075	Standard Bottom Trough for 23-in frame	8.8 x 55.4 x 12.7 cm (3.47 x 25.8 x 5 in)

## Centrix™ XL Resources

Standard Recommended Procedures (SRPs)	Hyperlink
Centrix™ XL System Housing Installation into 19- and 23-in Frames	<a href="#">003-076</a>
Centrix XL System Pigtailed Housing with Pigtailed Cassette for Splicing Installation	<a href="#">003-077</a>
Centrix XL System Stubbed Housing Installation	<a href="#">003-078</a>
Jumper Routing with Centrix XL System in a 19- or 23-in Rack	<a href="#">003-079</a>
Centrix XL Splitter Cassette Installation	<a href="#">003-083</a>
Centrix XL Splice-Through Cassette Installation	<a href="#">003-084</a>
Centrix XL System Accessories Installation	<a href="#">003-085</a>
Centrix XL System Patch Panel Cassette Installation	<a href="#">003-086</a>
Centrix XL System Stubbed MTP Cassette Installation	<a href="#">003-088</a>
Centrix XL System Housing with Integrated MTP® Module Installation	<a href="#">003-089</a>

# CORNING

Corning Optical Communications LLC • 4200 Corning Place • Charlotte, NC 28216 USA  
800-743-2675 • FAX: 828-325-5060 • International: +1-828-901-5000 • [www.corning.com/opcomm](http://www.corning.com/opcomm)

Corning Optical Communications reserves the right to improve, enhance, and modify the features and specifications of Corning Optical Communications products without prior notification.  
A complete listing of the trademarks of Corning Optical Communications is available at [www.corning.com/opcomm/trademarks](http://www.corning.com/opcomm/trademarks). All other trademarks are the properties of their respective owners.  
Corning Optical Communications is ISO 9001 certified. © 2025 Corning Optical Communications. All rights reserved. CRR-2038-AEN / August 2025