

## Better Buried Closures

The versatile design of the Corning Better Buried Closure meets most cable size requirements for buried in-line, tap, butt splices, cable and sheath repair. Eight standard sizes and five end cap configurations allow you to protect buried splices of almost any practical length and diameter. Better buried closures use compound compression, which is a gravity fill method of encapsulating and protecting the cable splice.

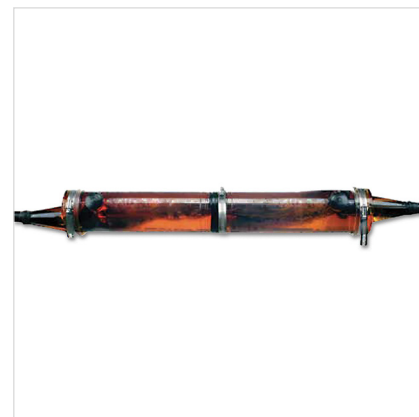
### Product Features

Tapered end caps can be trimmed and slit for the exact cable size required. Single, double, and triple entry styles are available, depending on size. When adding a branch cable to an existing cable, grooved end caps can be easily split in the field and quickly released with locking “H” strips provided in each kit.

Strain-relief bars can be installed on a simple or double sheath cable to protect the splice from electrical interference and damage from the cable tension. The aluminum strain-relief bar assembly includes hose clamps and an insulation sleeve.

The spacer web is designed to protect splice connectors by positioning them away from the closure walls. Better coverage is achieved because compound flows around the complete bundle, protecting splice components and enhancing coverage.

Hose clamps secure the closure body and end caps. The hose clamps are corrosion resistant, easy to install, and re-enterable.



### Closure Dimension Guide

Closure End Cap Port Diameters					Max. Splice Openings			Approx. Amount of Compound Required (Ave. Splice)
Closure Size	Single Entry (Max.)	Multiple Entry (Max.)			Single Sheath	Double Sheath		
		1	2	3		Outer	Inner	
2 x 2 in. (51 x 305 mm)	1.2 in. (30 mm)	1.2 in. (30 mm)	0.7 in. (18 mm)		5 in. (127 mm)			700 ml
2 x 24 in. (51 x 610 mm)	1.2 in. (30 mm)	1.2 in. (30 mm)	0.7 in. (18 mm)		17 in. (432 mm)	17 in. (432 mm)	14 in. (356 mm)	1,400 ml
3 x 24 in. (76 x 610 mm)	1.6 in. (41 mm)	1.6 in. (41 mm)	1.0 in. (25 mm)		17 in. (432 mm)	17 in. (432 mm)	14 in. (356 mm)	3,300 ml
4 x 24 in. (102 x 610 mm)	2.0 in. (51 mm)	2.0 in. (51 mm)	1.5 in. (38 mm)		17 in. (432 mm)	17 in. (432 mm)	14 in. (356 mm)	5,000 ml
5 x 26 in. (127 x 660 mm)	2.4 in. (61 mm)	2.4 in. (61 mm)	1.8 in. (46 mm)		19 in. (483 mm)	19 in. (483 mm)	16 in. (406 mm)	8,000 ml
6 x 26 in. (152 x 660 mm)		3.0 in. (76 mm)	2.0 in. (51 mm)		19 in. (483 mm)	19 in. (483 mm)	16 in. (406 mm)	14,000 ml
7 x 26 in. (178 x 660 mm)		3.5 in. (89 mm)	2.2 in. (56 mm)	2.2 in. (56 mm)	19 in. (483 mm)	19 in. (483 mm)	16 in. (406 mm)	17,000 ml
9 x 26 in. (229 x 660 mm)		4.0 in. (102 mm)	2.5 in. (64 mm)	2.5 in. (64 mm)	19 in. (483 mm)	19 in. (483 mm)	16 in. (406 mm)	23,000 ml

All metric conversions are approximate.

## Maximum Splice Bundle Capacities

Connector	2 x 12 in. (51 x 305 mm)	2 x 24 in. (51 x 610 mm)	3 x 24 in. (76 x 610 mm)	4 x 24 in. (102 x 610 mm)	5 x 26 in. (127 x 660 mm)	6 x 26 in. (152 x 660 mm)	7 x 26 in. (178 x 660 mm)	9 x 26 in. (229 x 660 mm)
4000-DWP	50 Pairs 24 AWG (0.5 mm) UY Only	100 Pairs 24 AWG (0.5 mm)	200 Pairs 24 AWG (0.5 mm)	400 Pairs 24 AWG (0.5 mm)	600 Pairs 24 AWG (0.5 mm)	900 Pairs 24 AWG (0.5 mm)	1200 Pairs 24 AWG (0.5 mm)	2400 Pairs 24 AWG (0.5 mm)
UR Connectors (w/3 in. Pigtails)	25 Pairs 22 AWG (0.6 mm)	50 Pairs 22 AWG (0.6 mm)	100 Pairs 22 AWG (0.6 mm)	200 Pairs 22 AWG (0.6 mm)	300 Pairs 22 AWG (0.6 mm)	400 Pairs 22 AWG (0.6 mm)	600 Pairs 22 AWG (0.6 mm)	900 Pairs 22 AWG (0.6 mm)
Compound Required if Not Supplied in Kit	700 ml	1,400 ml	3,300 ml	5,000 ml	8,000 ml	14,000 ml	17,000 ml	23,000 ml

All metric conversions are approximate.

## Ordering Information

Description	Corning Catalog Number
BB 2 x 12 in. Better Buried Closure with 8882 Encapsulant	80611147820
BB 2 x 24 in. Better Buried Closure with 8882 Encapsulant	80611147838
BB 3 x 24 in. Better Buried Closure with 8882 Encapsulant	80611147846
BB 4 x 24 in. Better Buried Closure with 8882 Encapsulant	80611147853
BB 5 x 26 in. Better Buried Closure with 8882 Encapsulant	80611147861

## The Following Items are Included in Each Better Buried Closure 4462-FN Re-enterable Encapsulant Kit:

Kit Components	2 x 12 in. (51 x 305 mm)	2 x 24 in. (51 x 610 mm)	3 x 24 in. (76 x 610 mm)	4 x 24 in. (102 x 610 mm)	5 x 26 in. (127 x 660 mm)	6 x 26 in. (152 x 660 mm)	7 x 26 in. (178 x 660 mm)	9 x 26 in. (229 x 660 mm)
Closure Body	1	1	1	1	1	1	1	1
DR Tape	1	1	1	1	1	2	2	2
23 Tape	1	1	1	1	1	2	1	1
B-sealing Tape	2	2	2	2	2	4	4	4
All Weather Vinyl Tape	1	1	1	1	1	1	1	1
Shield Connectors 4462-FN	3	3	4	4	4	4	5	5
End Cap, Single (SC)	1	1	1	1	1			
End Cap, Double (DC)	1	1	1	1	1	2	1	1
End Cap, Triple (TC)							1	1
Spacer Web (SW)	1	1	1	1	1	1	1	1
Strain-Relief Bar (SB)	1	1	2	2	2	2	2	2
Hose Clamps, Closure	2	3	3	3	3	3	3	3
Hose Clamps, Strain Bar	2	2	3	3	3	4	4	4
Funnel	1	1	1	1	1	1	1	1
Snap-In Cap	1	2	2	2	2	2	2	2
Re-enterable Encapsulant	700 ml	1,400 ml	3,300 ml	5,000 ml	8,000 ml	None	None	None
Locking "H" or Flex Strip	3	3	3	3	3	4	5	5
Sheath Scuff	1	1	1	1	1	1	1	1
Bonding Braid	4 in. (102 mm)	4 in. (102 mm)			14 in. (356 mm)	14 in. (356 mm)	14 in. (356 mm)	14 in. (356 mm)

Note: Foam strip provided in kits without re-enterable, tapes, or shield bond connectors.

# CORNING

Corning Optical Communications LLC • 4200 Corning Place • Charlotte, NC 28216 USA  
800-743-2675 • FAX: 828-325-5060 • International: +1-828-901-5000 • [www.corning.com/opcomm](http://www.corning.com/opcomm)

Corning Optical Communications reserves the right to improve, enhance, and modify the features and specifications of Corning Optical Communications products without prior notification. A complete listing of the trademarks of Corning Optical Communications is available at [www.corning.com/opcomm/trademarks](http://www.corning.com/opcomm/trademarks). All other trademarks are the properties of their respective owners. Corning Optical Communications is ISO 9001 certified. © 2019, 2025 Corning Optical Communications. All rights reserved. CRR-2022-AEN / February 2025