

Citizen Participation Plan

Study Area Bounded by Pyrex Street, E. Pulteney Street,
Post Creek, and the Chemung River
NYSDEC Project ID 851046

Corning, New York

June 2014

Contents

1.0 Introduction and Overview	1-1
2.0 Background and Project Description	2-1
2.1 Study Area History	2-1
2.2 Project Description	2-2
3.0 Citizen Participation Activities	3-1
3.1 Document Repository.....	3-1
3.2 Mailing List.....	3-1
3.3 Points of Contact	3-2
3.4 Telephone Inquiry Line and E-mail Address	3-2
3.5 Website	3-3
3.6 Summaries of Technical Reports.....	3-3
3.7 Public Notices	3-3
3.8 Public Comment Periods and Comment Responses.....	3-3
3.9 Meetings	3-4
3.10 Media Notification	3-4
3.11 Elected State and Federal and Local Officials Briefings	3-4
3.12 Revise the CP Plan	3-4
4.0 References	4-1

List of Appendices

Appendix A Project Contacts

Appendix B Document Repositories

Appendix C List of Available Documents

Appendix D Project Contact List

Appendix E Glossary

Appendix F Study Area Map

1.0 Introduction and Overview

This document presents the Citizen Participation (CP) Plan for a Study Area located in the City of Corning, New York that is bounded by Pyrex Street on the west, E. Pulteney Street on the north, Post Creek on the east and the Chemung River on the south (Study Area). The Study Area, shown on Figure 1 (Appendix F), is situated along the northern bank of the Chemung River, northwest of the confluence with Post Creek. The Study Area consists of approximately 180 acres of land, and currently is occupied by the Corning-Painted Post East High School (including the area of the former Kent Phillips School), the Corning Christian Academy, the Memorial Stadium and field, the Corning Firehouse Frontage, a residential area consisting of over 200 residences and one public park, and flood control areas along the Chemung River and Post Creek. During construction activities as a part of the expansion and improvements to the Corning-Painted Post East High School, fill material that the School District described as containing ash, brick, and glass waste (fill) was discovered in portions of the Study Area.

On June 27, 2014, Corning Incorporated and the New York State Department of Environmental Conservation (NYSDEC) entered into an Order on Consent and Administrative Settlement (Order) to conduct additional environmental sampling to assess the nature and extent of fill that may be encountered within the Study Area. The scope of the environmental study is outlined in the *Study Area Characterization Work Plan for the Study Area Bounded by Pyrex Street, E. Pulteney Street, Post Creek, and the Chemung River* (the Work Plan; Weston, 2014).

The Order also requires the development of a CP Plan for the Study Area, in accordance with ECL §27-1417 and 6 NYCRR sections 375-1.10 and 375-3.10. Corning is committed to informing and involving the public during the course of the environmental study presented in the Work Plan, and will work with the NYSDEC and the New York State Department of Health (NYSDOH) to accomplish this goal. This CP Plan describes the minimum CP activities to be conducted during the environmental study; additional community outreach may also occur based on community feedback.

2.0 Background and Project Description

In 2012 and 2013, the Corning-Painted Post East High School excavated subsurface materials during its expansion activities which it described as consisting of small pieces of broken glass, brick and ash in its August 27, 2012 report. As a result of these findings, Corning Incorporated is working with the NYSDEC and the NYSDOH, along with the Corning-Painted Post School District, to conduct additional environmental sampling to identify the extent of these fill materials in the Study Area and to understand the nature of these materials. This section provides background information regarding the Study Area and a description of the environmental project planned.

2.1 Study Area History

The City of Corning has a long history of manufacturing, and is world renowned for its glassmaking. Historical references indicate that, in the late 1800s and early 1900s, the City of Corning was home to a large brick manufacturer and more than sixty (60) former glass manufacturers. The most enduring of these enterprises is Corning Incorporated, whose history dates back to 1868 when the company founder established the Corning Flint Glass Works in Corning, New York. While the company has grown and expanded through the years and changed names to Corning Glass Works and currently to Corning Incorporated, the corporate headquarters has remained in Corning, New York.

In the late 1800s, coal was the primary fuel source in the Corning, New York area, and most of the local industries used coal to heat their furnaces. In the early 1900s natural gas was introduced to the region, and Corning Glass Works, along with many other industries and municipalities, started converting their fuel sources to natural gas. The exact years during which this conversion occurred for Corning Glass Works are not known.

During the years when coal was widely used by various industrial and domestic entities as a fuel source, it was not uncommon practice for the construction and demolition debris, including brick, ash, and other materials, to be used as fill to improve drainage and to fill in low lying areas as an aid to development.

Through a title search of property deeds, it was found that the Study Area was located on part of lands previously owned by Corning Homes, Inc., which had acquired these properties in 1920 from the heirs of the then-deceased founder of Corning Flint Glass Works. The deeds for these properties contained a condition that allowed Corning Glass Works to maintain structures, buildings and "ash dumps as now located" on the properties. Despite a thorough review of available historical documents and public records, Corning Incorporated has not, to date, located any maps or records that depict the potential location, if any, of the "ash dumps" as referenced in the deeds (i.e., as of 1920). In 1937, Corning Homes, Inc. sold portions of the properties with the same conditional language included, which has never been extinguished. Therefore, the Study Area has been established as the boundary of the 1937 deed, which is bounded by Pyrex Street on the west, E. Pulteney Street on the north, Post Creek on the east and the northern bank of the Chemung River, northwest of the confluence with Post Creek as illustrated on Figure 1 (Appendix F).

2.2 Project Description

Corning Incorporated has retained an experienced expert technical consultant, Weston Solutions, Inc. to implement an environmental study of the Study Area in accordance with the NYSDEC-approved Work Plan (Weston, 2014). The study will assess the nature and extent of fill material that may be encountered within the Study Area and evaluate potential exposure pathways by conducting a geophysical survey to identify areas where potential fill may be present; completing soil borings in areas where this fill may be identified with a thorough visual inspection and reporting of the materials encountered; collecting surface and subsurface soil samples for analytical testing; and installing and sampling groundwater monitoring wells. After the sampling is complete, Corning Incorporated will report the findings and work with the NYSDEC, NYSDOH, and the school district to determine whether any further action is necessary.

3.0 Citizen Participation Activities

This section describes the CP program for the Study Area. The program meets the requirements set forth in NYSDEC Program Policy No. 23, the *Citizen Participation Handbook for Remedial Programs*. The program will be implemented by Corning Incorporated, with oversight and input from the NYSDEC and NYSDOH. The following paragraphs describe the required or suggested minimum CP activities for the project; additional CP activities may be considered based on community feedback.

3.1 Document Repository

A document repository is a file of documents pertaining to the environmental study of a Study Area and the associated citizen participation programs, which is made available for public review. The file is typically maintained in a nearby public building to provide access at times and a location convenient to the public.

For the Study Area, document repositories will be established, and will include the following documents, as available:

- Consent Order
- CP Plan
- Fact Sheets
- Preliminary Study Area Characterization Work Plan
- Preliminary Study Area Characterization Summary Report
- Other materials (e.g., information sheets, notices, etc.)

Two repositories will be established for the Study Area: (1) the Southeast Steuben County Library, and (2) the NYSDEC Regional Office. The addresses for these repositories are listed in Appendix B.

3.2 Mailing List

A key element of the CP Plan is a mailing list of stakeholders, the community, and interested citizens in an area. Direct mailings of information allow people to review the information provided at their convenience (i.e., rather than in a public forum). These mailings also facilitate the distribution of information to everyone who needs or wants to be kept informed about the project.

A mailing list has been established for the Study Area (referred to as the Project Contact List), which is composed of two components:

- Property owners for properties within the proposed Study Area, and
- Other interested parties.

The contact information for interested parties (second bullet) is provided in Appendix D; property owner contact information is maintained confidentially in project files. Corning Incorporated will maintain and update the mailing list information regularly throughout the project.

3.3 Points of Contact

Several points of contact have been established for the project. The public is encouraged to contact any of the project staff listed below.

Technical Information:

Gregory B. MacLean, P.E.
 NYS Department of Environmental Conservation
 Division of Environmental Remediation, Region 8
 6274 East Avon-Lima Road
 Avon, NY 14414
 Phone: (585) 226-5356
 Email: gbmaclea@gw.dec.ny.us

Study Area-Related Health Information:

Melissa A. Doroski, MPH
 New York State Department of Health
 Empire State Plaza, Corning Tower Room #1787
 Albany, NY 12237
 Phone: 518-402-7860
 Email: BEEI@health.state.ny.us

Citizen Participation:

Linda Vera
 Regional Citizen Participation Specialist
 NYS Department of Environmental Conservation
 Region 8
 6274 East Avon-Lima Road
 Avon, NY 14414
 Phone: (585) 226-5324
 Email: ljvera@gw.dec.state.ny.us

3.4 Telephone Inquiry Line and E-mail Address

Corning Incorporated will establish a toll free telephone number to receive and respond to questions from the public:

(Toll free) 866-256-1902

Also, Corning Incorporated will establish an e-mail address for community members to ask a question in writing:

StudyArea@Corning.com

3.5 Print Media (Fact Sheets)

Printed communications materials, such as fact sheets, newsletters or brochures, are one of several citizen participation tools used to provide information to the community about a project. Fact sheets are typically two to four pages in length, and portray a specific topic of interest in community-friendly (non-technical) terms. Pictures and graphics are used as much as possible to enhance the fact sheet and more simply communicate key information.

The NYSDEC will prepare Fact Sheets at certain key milestones of the project in accordance with NYSDEC Program Policy No. 23 (the *Citizen Participation Handbook for Remedial Programs*). In addition, Corning Incorporated will prepare additional informative newsletters and/or fact sheets and periodically distribute these materials to interested individuals and organizations. For example, Corning Incorporated newsletters/fact sheets may contain articles on the status of the environmental project, listings of recently issued documents, names of individuals to contact for more information, and descriptions of study techniques or technologies or project milestones. The newsletters/fact sheets will be used to increase community awareness and knowledge of the project and its status. All fact sheets will be reviewed and approved by the NYSDEC before they are distributed to entities on the Study Area contact list.

3.6 Website

In today's society, providing information on the Internet about a Study Area is an effective means of communication. Most community members have some access to the Internet (at home, at work, or at a public library), and this can be an important communications vehicle for consolidated, accurate, and up-to-date information and visuals.

NYSDEC and Corning will each establish a website for the project, and each will announce the addresses via a fact sheet.

3.7 Summaries of Technical Reports

A summary (in the form of a fact sheet) will be provided after each technical report has been finalized to communicate the facts about the project in simple terms and to enhance understanding. It is important that technical reports articulate a realistic and understandable view of the work being done and the potential risks or exposures involved; however, it is also important that a community be able to understand the issues in lay terms.

3.8 Public Notices

As required by NYSDEC Program Policy, formal public notices will be published to inform stakeholders and community members of certain milestones or events concerning the project. These notices will be placed in a local newspaper of general circulation, and will appear in a prominent position in the paper with adequate time for the community to plan participation.

3.9 Public Comment Periods and Comment Responses

If requested by the NYSDEC, the public will be given an opportunity to comment on certain project documents and to receive comment responses from Corning Incorporated and the NYSDEC. Under NYSDEC program policy, the public would be allowed 30 to 45 days to comment on a particular document.

Formal comment response documents would be prepared by Corning Incorporated and the NYSDEC, and provided to the public. In this manner, the public will obtain direct feedback on their comments, and will understand how the comments are being incorporated into final decisions being made regarding the project.

3.10 Meetings

Public or town meetings will be held as appropriate (e.g., to announce major milestones during the project), or as requested by the NYSDEC or the community. Such meetings will include (as appropriate) posters, exhibits, and displays that give audience members graphic representations of project activities, findings, or program schedules. These materials will provide perspective to the community with respect to a study of this nature.

Public meetings will be held in a convenient and central location to the community. Meeting times and locations would be determined with input from local community leaders, and will be announced in local newspapers and/or a mailing to the community.

3.11 Media Notification

Media releases will be developed at key milestones of the program and distributed to local newspapers and other media outlets that may express interest. Media contacts are listed in Appendix D. Media briefings can also be arranged if media representatives have the need for additional background information on the project.

3.12 Elected State and Federal and Local Officials Briefings

Briefings to state and federal elected officials and local officials will be scheduled as needed or requested to communicate significant events during the project. Such briefings will keep these leaders involved and informed as to the progress of activities on the project. These briefings will also give officials the opportunity to ask questions or resolve any concerns.

3.13 Revise the CP Plan

During the course of implementing the CP Plan, Corning Incorporated and the NYSDEC may identify additional community needs, issues, or concerns regarding the Study Area that are not currently addressed in this CP Plan. As such, the CP Plan will be updated as needed, or at least every three years.

4.0 References

Weston, 2014. Study Area Characterization Work Plan, Study Area Bounded by Pyrex Street, E. Pulteney Street, Post Creek, and the Chemung River, prepared for Corning, Incorporated, Corning, New York; prepared by Weston Solutions, Inc., West Chester, Pennsylvania 19380; June 2014.

Appendix A
Project Contacts

For additional information about the program, the public is encouraged to contact any of the New York State project staff listed below.

Technical Information:

Greg MacLean, P.E.
Division of Environmental Remediation
NYSDEC – Region 8
6274 East Avon-Lima Road
Avon, NY 14414
Phone: (585) 226-5356
Email: gbmaclea@gw.dec.ny.us

Study Area-Related Health Information:

Melissa A. Doroski, MPH
New York State Department of Health
Empire State Plaza, Corning Tower Room #1787
Albany, NY 12237
Phone: 518-402-7860
Email: BEEI@health.state.ny.us

Citizen Participation:

Linda Vera
Regional Citizen Participation Specialist
NYSDEC – Region 8
6274 East Avon-Lima Road
Avon, NY 14414
Phone: (585) 226-5324
Email: ljvera@gw.dec.state.ny.us

Appendix B

Document Repositories

Two document repositories have been established to provide the public with convenient access to important project documents and other information. This information will include reports, data and information gathered and developed during the course of the assessment and evaluation of conditions surrounding the Study Area. These repositories can be found at the following locations:

Southeast Steuben County Library

300 Nasser Civic Center Plaza

Corning, NY, 14830

Phone: (607) 936-3713

Contact: (reference librarian) for an appointment

Hours:	Monday	9:00am-6:00 pm
	Tuesday	9:00am-8:00pm
	Wednesday	9:00am-6:00pm
	Thursday	9:00am-8:00pm
	Friday	9:00am-6:00pm

NYSDEC Region 8 Office

6274 Avon-Lima Rd. (Rtes. 5 and 20)

Avon, NY 14414-9516

Contact: Linda Vera at (585) 226-5324 for an appointment

Hours: Monday through Friday 8:30am-4:45pm

Appendix C

List of Available Documents

According to the NYSDEC, the following documents are available at the document repositories listed in Appendix B of this CPP:

- Order on Consent and Settlement Agreement DEC No. 851056, dated June 27, 2014
- Study Area Characterization Work Plan, (Weston, June 2014
- Citizen Participation Plan, dated June 27, 2014

Within the initial months of the project, Corning Incorporated will also provide copies of the following documents for the document repositories:

- Fact Sheets prepared and distributed to the Project Contact List

Additional documents not listed above will be placed in the designated repositories as the program for this Study Area develops.

Appendix D

Project Contact List

The following contact list has been developed to help keep the community informed about and involved in the project activities relating to the Study Area. The list includes local, regional and state officials; local media; civic, business, and environmental organizations; and others. The Project Contact List will be reviewed periodically and updated as appropriate.

Note: The property owner and resident portion of the list is maintained confidentially in project files, not in a CP Plan or repositories.

Environmental Groups

Friends of the Chemung River Watershed
111 N. Main St.
Elmira, N.Y. 14901

Media

Stella Dupree, Managing Editor
The Leader
34 West Pulteney St.
Corning, N.Y., 14830

News Director
WENY-TV
474 Old Ithaca Road
Horseheads, N.Y., 14845

Lois Wilson, Managing Editor
Star-Gazette
201 Baldwin St., P.O. Box
Elmira, N.Y., 14902

News Director
YNN
815 Erie Blvd. East
Syracuse, N.Y., 13210

News Director
WETM-TV
101 East Water Street
Elmira, N.Y., 14901

Associated Press
Albany Bureau
P.O. Box 11010
Albany, N.Y., 12211

Local Officials

City of Corning

Honorable Richard P. Negri, Mayor
City of Corning
1 Nasser Civic Center Plaza
Corning, N.Y., 14830

Councilman Lee Welles
City of Corning
1 Nasser Civic Center Plaza
Corning, N.Y., 14830

Mark Ryckman, City Manager
City of Corning
1 Nasser Civic Center Plaza
Corning, N.Y., 14830

Councilman Chris Karam
City of Corning
1 Nasser Civic Center Plaza
Corning, N.Y., 14830

Councilman Steven Maio
City of Corning
1 Nasser Civic Center Plaza
Corning, N.Y., 14830

Councilman William Boland
City of Corning
1 Nasser Civic Center Plaza
Corning, N.Y., 14830

Councilman Frank Muccini
City of Corning
1 Nasser Civic Center Plaza
Corning, N.Y., 14830

Councilman Frank Coccho
City of Corning
1 Nasser Civic Center Plaza
Corning, N.Y., 14830

Councilman James J. Nelson
City of Corning
1 Nasser Civic Center Plaza
Corning, N.Y., 14830

Councilman Ross Cavallaro
City of Corning
1 Nasser Civic Center Plaza
Corning, N.Y., 14830

Corning-Painted Post School District

Michael Ginalski, Superintendent
165 Charles St.
Painted Post, N.Y., 14870

Jeffrey Delorme, Assistant Superintendent
165 Charles St.
Painted Post, N.Y., 14870

Dr. Dale Wexell, Board President
372 W. Second St.
Corning, N.Y., 14830

Nancy Arkin
2868 Downing St.
Big Flats, N.Y., 14814

Kristine Belanger
57 Pine Drive
Painted Post, N.Y., 14870

Steuben County Officials

Honorable George J. Welch
Steuben County Legislature
3 East Pulteney Square
Bath, N.Y., 14810

Joe Dubendorfer, Chairman
Corning Planning and Zoning Commission
35 Roosevelt St
Corning, N.Y., 14830

Salvatore Trentanelli, Police Chief
1 Nasser Civic Center Plaza
Corning, N.Y., 14830

Neil Bulkley
23 Brown Road
Corning, N.Y., 14830

Mary Franklin
411 N. Hamilton St.
Painted Post, N.Y., 14870

Janelle Meter
10777B Skyline Drive
Corning, N.Y., 14830

Virginia Schultz
134 Thompson Drive
Painted Post, N.Y., 14870

Dr. James Webb
102 High Road
Corning, N.Y., 14830

Victoria Zingler
2 Knollbrook Lane East
Painted Post, N.Y., 14870

Honorable Hilda T. Lando
Steuben County Legislature
3 East Pulteney Square
Bath, N.Y., 14810

Honorable Joseph J. Hauryski, Chairman
Steuben County Legislature
3 East Pulteney Square
Bath, N.Y., 14810

Mark R. Alger, County Administrator
Steuben County Office Building
3 East Pulteney Square
Bath, N.Y., 14810

Brenda Mori, Clerk
Steuben County Legislature
3 East Pulteney Square
Bath, N.Y., 14810

Judith M. Hunter, Clerk Steuben County
County Clerk's Building
3 East Pulteney Square
Bath, N.Y., 14810

Amy R. Dlugos
Steuben County Planning Department
3 East Pulteney Square
Bath, N.Y., 14810

Vincent Spagnoletti, Commissioner
Steuben Public Works Department
3 East Pulteney Square
Bath, N.Y., 14810

Victoria Fuerst, Director
Public Health and Nursing Services
3 East Pulteney Square
Bath, N.Y., 14810

Wendy G. Flaitz, Director
Real Property Tax Service Agency
3 East Pulteney Square
Bath, N.Y., 14810

State Officials

Paul D'Amato
Regional Director
NYSDEC Region 8
6274 East Avon-Lima Road
Avon, N.Y., 14414

Dennis Harkawik, Esq.
Regional Attorney
NYSDEC Region 8
6274 East Avon-Lima Road
Avon, N.Y., 14414

Benjamin Conlon, Esq.
Bureau Chief – Remediation Bureau
NYSDEC Office of General Counsel
625 Broadway
14th Floor
Albany, N.Y., 12233

Greg MacLean, P.E.
Division of Environmental Remediation
NYSDEC Region 8
6274 East Avon-Lima Road
Avon, N.Y., 14414

Bart Putzig
Division of Environmental Remediation
NYSDEC Region 8
6274 East Avon-Lima Road
Avon, N.Y., 14414

Linda Vera
Regional Citizen Participation Specialist
NYSDEC Region 8
6274 East Avon-Lima Road
Avon, N.Y., 14414

Melissa A. Doroski, MPH
New York State Department of Health
Empire State Plaza, Corning Tower Room
#1787
Albany, NY 12237

State Elected Officials

Senator Thomas F. O'Mara
333 Water St., Suite 301
Elmira, N.Y., 14902

Assemblyman Philip A. Palmesano
105 E. Steuben St.
Bath, N.Y., 14810

Federal Elected Officials

Honorable Charles Schumer
United States Senate
322 Hart Senate Building
Washington D.C., 20510

Congressman Tom Reed
United States House of Representatives
1504 Longworth House Office Building
Washington, D.C., 20515

Honorable Kirsten Gillibrand
United States Senate
478 Russell
Washington, D.C., 20510

Other Interested Parties

Corning Christian Academy
Richard A. Cornfield, Principal
11 Aisne St.
Corning, NY 14830

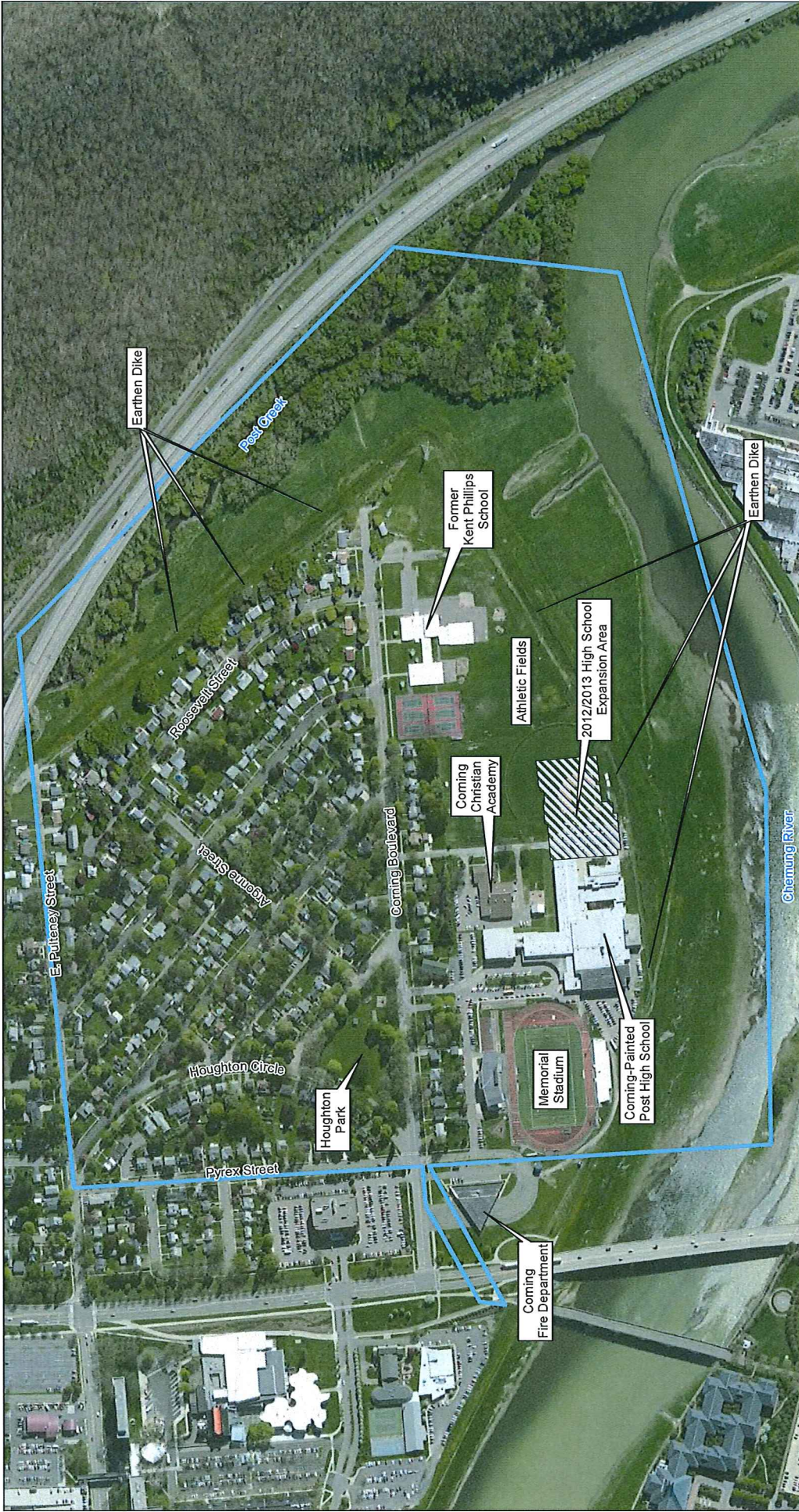
Appendix E

Glossary

Term	Definition
Availability Session	A scheduled gathering of project staff and members of the public in a casual setting, without a formal presentation or agenda but usually focusing on a specific aspect of an environmental study.
Citizen Participation	A program of planning and activities to encourage communication among people affected by or interested in the project and the government agencies and other parties responsible for an environmental study.
Citizen Participation Plan	A Citizen Participation Plan describes the citizen participation activities that will be conducted during a specific project's environmental study.
Comment Period	A period for the public to review and comment about various documents. For example, a 30-day comment period is provided when NYSDEC determines it to be necessary.
Consent Order	A legal and enforceable agreement negotiated between NYSDEC and a potential responsible party. The order sets forth agreed upon terms by which the potential responsible party will undertake an environmental study and pay for the NYSDEC's costs to oversee the study. The Consent Order includes a schedule for implementing the agreed scope of the study.
Document Repository	A document repository is a file of documents pertaining to the environmental study of a Study Area and the associated citizen participation programs, which is made available for public review. The file is typically maintained in a nearby public building to provide access at times and a location convenient to the public.
Fact Sheet	A written discussion about part or all of an environmental project, prepared by NYSDEC or the potential responsible party and provided to the public. A fact sheet may focus on: a particular element of a project; opportunities for public involvement; availability of a report or other information, or announcement of a public meeting or comment period . A fact sheet may be mailed to all or part of a project's contact list, distributed at meetings, placed in a document repository and/or sent on an "as requested" basis.
New York State Department of Health	Agency within the executive branch of New York State government which: performs health-related inspections at suspected hazardous waste sites; conducts health assessments to determine potential risk from environmental exposure; reviews risk assessments; conducts health-related community outreach around sites; and reviews remedial actions to assure that public health concerns are adequately addressed.
NYSDEC Project Manager	An NYSDEC staff (usually an engineer, geologist or hydro geologist) responsible for the day-to-day administration of an environmental project. The Project Manager works with legal, health, citizen participation and

Term	Definition
Public Meeting	other staff to accomplish project-related goals and objectives. A scheduled gathering of NYSDEC staff and potential responsible party staff with the public to give and receive information, ask questions and discuss concerns about a study area. Staff from multiple NYSDEC divisions and legal and health staff often also attend. A public meeting, unlike an availability session , generally features a formal presentation and a detailed agenda.

Appendix F
Study Area Map



Legend

- Study Area Boundary Based on 1937 Quit Claim Deed

NOTES:
 Manager: ESRI, DigitalGlobe, GeoEye
 Mapping Service: 2011
 Coordinate System: NAD 1983 State Plane
 New York Central Feet
 Datum: NAD83 Units: Feet

Scale:
 0 50 100 150 200 250 Feet
 0 50 100 150 200 Meters

Study Area
 Study Area
 Coming NY

WESTON
 CONSULTANTS

Document Name: CPP_Appendix_E_Study_Area.MXD
 6/27/2014

