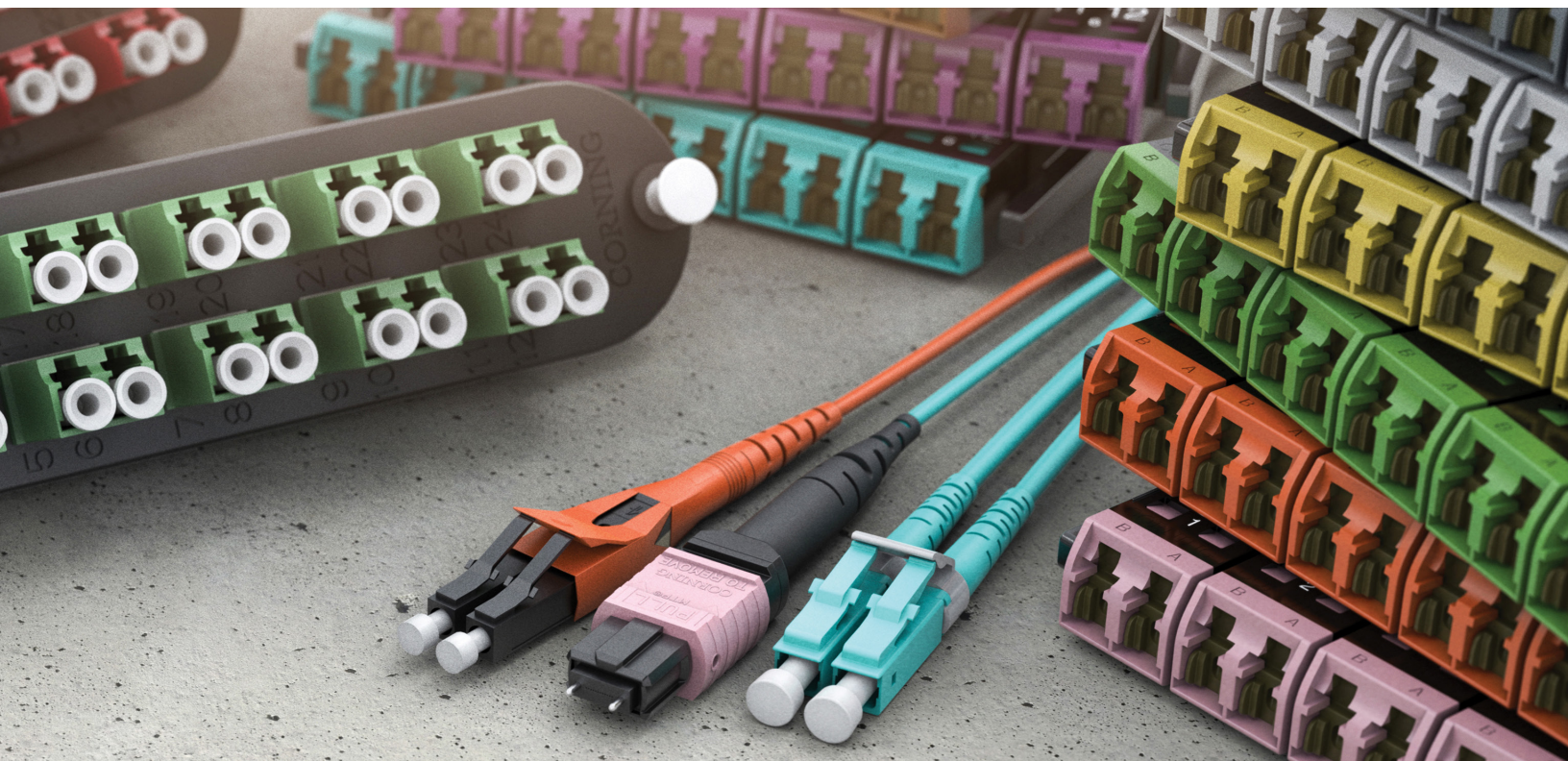


CORNING



Secure Solutions

EMEA Ordering Guide

First Edition



Security For Your Networks

Securing your mission-critical networks

Network security is not optional. When a reliable and secure network is critical, you need a solution that delivers top-notch network security as well as more efficiency, speed, and convenience in identifying networks. Our secure solutions allow for a completely customizable installation — from the data centre throughout the local area network.

With 12 coloured keys available, you can simply and quickly segment the network and prevent inadvertent connection into the wrong network. Our keyed coloured and non-keyed coloured options are available for both pre-terminated and field-terminated LAN and DC applications.

When network security is critical, you can rely on the company that invented low-loss optical fibre and has continued to innovate to solve tough technology challenges.

Contents

Authorised Distributors

- Authorised Distributors.....	4
--------------------------------	---

Field-Terminated Keyed Solutions

- Cables.....	6
- UniCam® LC Connectors	7
- Closet Connector Housing (CCH) Non-Shuttered LC Adapter Panels	8
- EDGE Solutions Non-Shuttered LC Splice Cassette....	9
- Closet Connector Housing (CCH) Non-Shuttered LC Pigtailed Adapter Panels.....	10
- Closet Connector Housing (CCH) Non-Shuttered LC Pigtailed Splice Cassettes	11
- Wall-Plate Outlets (WLL) Single-Gang Non-Shuttered, Loaded LC Adapters	12
- Adapter Compatibility Matrix.....	13
- Wall-Plate Outlets (WLL) Blank	14
- Wall-Plate Outlets (WLL) Non-Shuttered, LC Keystone Adapters	15
- Non-Shuttered LC Duplex Adapters.....	16

Pre-terminated Solutions

EDGE8 Solutions

- Corning® CleanAdvantage™	18
- MTP Trunks	19
- MTP Extender Trunks	20
- MTP Hybrid Trunks.....	21
- MTP Hybrid Extender Trunks.....	22
- MTP to LC Harness.....	23
- MTP to Shuttered LC Duplex Modules	24
- MTP to Shuttered LC Port Breakout Modules.....	25
- Shuttered Reverse Polarity MTP Adapter Panels	26
- EDGE 4x4 Mesh Modules.....	27
- Shuttered LC Adapter Panels	28
- MTP Jumpers.....	29

EDGE Solutions/Plug & Play Systems

- EDGE Solutions MTP Trunks	30
- EDGE Solutions MTP Extender Trunks	31
- EDGE Solutions MTP Hybrid Trunks.....	32
- EDGE Solutions MTP Hybrid Extender Trunks	33
- EDGE Solutions MTP to LC Harness.....	34
- LC to LC Trunks	35
- EDGE Solutions Shuttered LC Modules	36
- EDGE Solutions MTP Adapter Panels.....	37
- EDGE Solutions MTP Jumpers	38
- Secure Duplex Patch Cords.....	39
- LC Lockable Uniboot Jumpers.....	40

Field-Terminated Non-Keyed Solutions

- Cables.....	42
- UniCam Connectors.....	43
- Closet Connector Housing (CCH) LC Adapter Panel ..	44
- EDGE Solutions Shuttered LC Splice Cassettes.....	45
- Closet Connector Housing (CCH) Shuttered LC Adapter Panels	46
- Closet Connector Housing (CCH) LC Pigtailed Splice Cassettes.....	47
- Wall-Plate Outlets (WLL) Single-Gang Non-Shuttered, Loaded LC Adapters	48
- Adapter Compatibility Matrix.....	49
- Wall-Plate Outlets (WLL) Blank	50
- Wall-Plate Outlets (WLL) Shuttered LC Keystone Adapters	51
- Non-Shuttered LC Duplex Adapters.....	52

Additional Products

- Rack-Mountable Hardware Solutions	54
- Wall-Mountable Hardware Solutions.....	55
- Ceiling/Floor/Wall-Mountable Hardware Solutions...	56
- Fibre-to-the-Desk Hardware Solutions.....	56

Copper Solutions

- EVeron® Copper Datacom	58
- Additional Faceplates.....	59
- EVeron Copper Datacom Patch Cord	60
- Bloc Port.....	61
- EVeron Copper Datacom Patch Cord Locks System ..	62

Resources

- Tools and Resources	63
-----------------------------	----



How to Buy

Installers and Distributors

<http://www.corning.com/opcomm/emea/npi>

<http://www.corning.com/opcomm/auth/emea/en>

Sales Contacts in Your Region

<http://corning.com/opcomm/emea/en/sales>

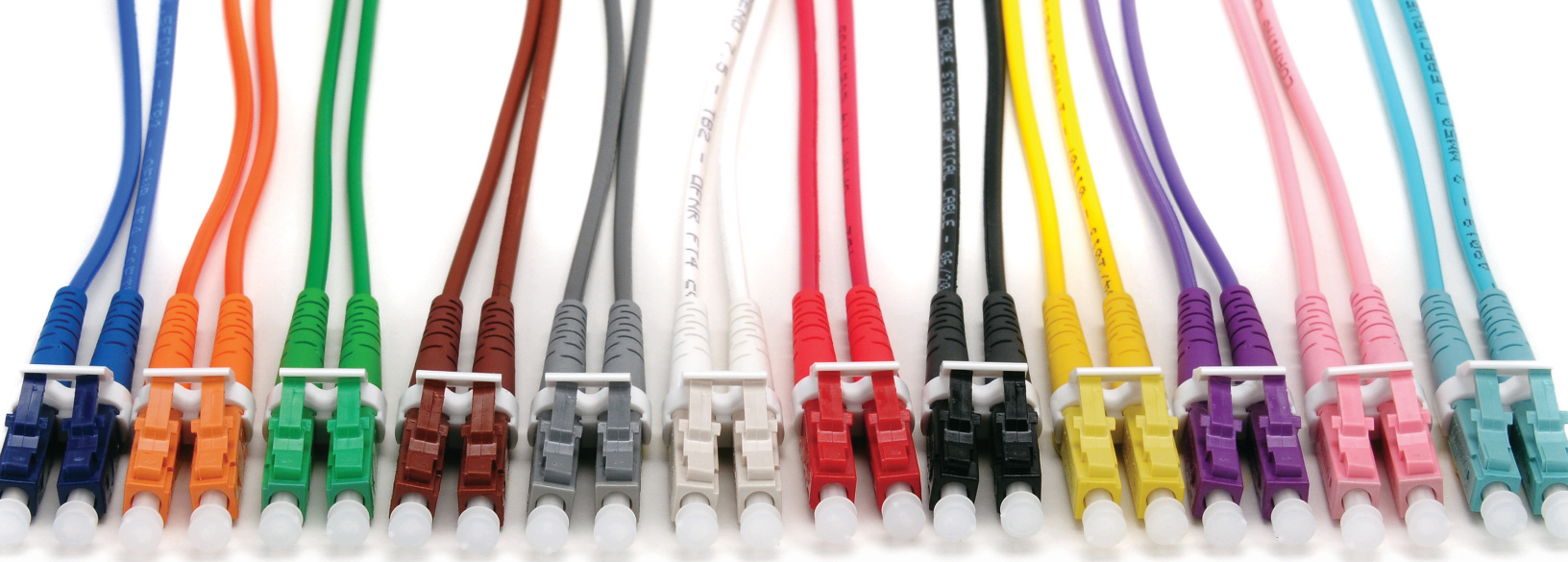
Customer Care

cc.emea@corning.com

Order Tracker

ordertracker.corning.com/

[Back to Table of Contents](#)



Field-Terminated Keyed Solutions

We offer network security for any organization looking to mitigate privacy or security concerns. Giving the user 12 colour-coded key options, the keyed LC solution provides added flexibility and easy network identification. Customizable for efficiency, the keys offer decreased margins of error when identifying a network. The keyed connectors, located on the front and back of the patch panel, are used to match access rights to the proper network. Most importantly, the keys cannot be duplicated with standard components, making this one of the most risk-averse product solutions on the market.

[Back to Table of Contents](#)

Field-Terminated Keyed Solutions

Cables



1 Select fibre count.

Standard offerings:
002 006 012 024
004 008 018

2 Select fibre code.

K = 62.5 µm multimode (OM1)
T = 50 µm multimode (OM2/OM3/OM4/OM4+)
E = Single-mode (OS2)
Corning® SMF-28e+® fibre
Z = Single-mode (OS2)
Corning® SMF-28® Ultra fibre

3 Defines cable type.

8 = MIC® cable (standard)

4 Defines outer jacket.

Z = single jacket, LSZH™

5 Defines fibre placement.

3 = Standard

6 Select length markings.

5 = Markings in ft with coloured jacket (fibre count < 12)
6 = Markings in m with coloured jacket (fibre count < 12)
7 = Markings in ft with coloured jacket (fibre count ≥ 12)
8 = Markings in m with coloured jacket (fibre count ≥ 12)

7 Defines tensile strength.

1 = See specifications

8 Select transmission options.

20 = SMF-28e® ULTRA
22 = ClearCurve® LBL,
ClearCurve ZBL
38 = ClearCurve OM2
88 = ClearCurve OM3
98 = ClearCurve OM4

9 Defines cable type.

- = MIC cable (standard)

10 Select CPR and special manufacturing and colour code.*

2G = Standard, LSZH
For special manufacturing and colour code, please see below for selection.



*Colour Codes for Selection 10

Non-Armored

AQ = Aqua	BR = Brown	GR = Green	BK = Black	OR = Orange	RS = Rose
RD = Red	SL = Slate	BL = Blue VI = Violet	WH = White	YL = Yellow	

Interlocking Armored

AA = Aqua	AB = Brown	AG = Green	AK = Black	AO = Orange	AP = Rose
AR = Red	AS = Slate	AU = Blue	AV = Violet	AW = White	AY = Yellow

Note: Armored available upon request, please contact your local Corning representative or alternatively Corning Customer Care at 00800-2676-4641 or email cc.emea@corning.com.

[Back to Table of Contents](#)

Field-Terminated Keyed Solutions

UniCam® LC Connectors

LC Keyed Connectors

95 - - K

1

2

- 1

Select fibre type.

000 = 62.5 µm multimode (OM1)

050 = 50 µm multimode (OM2)

05X = 50 µm multimode (OM3/OM4/OM4+)

200 = Single-mode (OS2)

- 2

Select connector colour.

N = Blue R = Red

E = Orange Y = Yellow

G = Green B = Black

S = Slate V = Violet



[Back to Table of Contents](#)

Field-Terminated Keyed Solutions

Closet Connector Housing (CCH) | Non-Shuttered LC Adapter Panels

Keyed to Non-Keyed

CCH - CP

-

1

2

- 1

Select fibre count.

06 = 6-fibre (three duplex adapters)

08 = 8-fibre (four duplex adapters)

12 = 12-fibre (six duplex adapters)

16 = 16-fibre (eight duplex adapters)

24 = 24-fibre (12 duplex adapters)
- 2

Select LC adapter colour.

LE = Blue LA = Red

LH = Orange LF = Black

LB = Green LD = Yellow

LL = Brown LK = Violet

LG = Slate LN = Rose

LM = White LP = Aqua



Keyed to Keyed

CCH - CP

-

1

2

- 1

Select fibre count.

06 = 6-fibre (three duplex adapters)

08 = 8-fibre (four duplex adapters)

12 = 12-fibre (six duplex adapters)

16 = 16-fibre (eight duplex adapters)

24 = 24-fibre (12 duplex adapters)
- 2

Select LC adapter colour.

K1 = Blue K5 = Red

KH = Orange KK = Black

KD = Green K9 = Yellow

KN = Brown KM = Violet

KL = Slate KQ = Rose

KP = White KR = Aqua



[Back to Table of Contents](#)

Field-Terminated Keyed Solutions

EDGE™ Solutions | Non-Shuttered LC Splice Cassette

Keyed to Non-Keyed

EDGE - CS12 - - P00 E

1

2

3

4

1 Fibre count.
12 = 12-fibre

2 Select LC adapter colour.
AG = Blue AH = Red
AM = Orange AN = Black
AK = Green AJ = Yellow
AQ = Brown AV = Violet
AP = Slate AT = Rose
AS = White AR = Aqua

3 Fibre type.
Q = 50 µm multimode (OM4)
T = 50 µm multimode (OM3)
R = Single-mode (OS2)

4 Splicing type.
E = Single-fibre splicing

Keyed to Keyed

EDGE - CS12 - - P00 E

1

2

3

4

1 Fibre count.
12 = 12-fibre

2 Select LC adapter colour.
K1 = Blue K5 = Red
KH = Orange KK = Black
KD = Green K9 = Yellow
KN = Brown KM = Violet
KL = Slate KQ = Rose
KP = White KR = Aqua

3 Fibre type.
Q = 50 µm multimode (OM4)
T = 50 µm multimode (OM3)
R = Single-mode (OS2)

4 Splicing type.
E = Single-fibre splicing



[Back to Table of Contents](#)

Field-Terminated Keyed Solutions

Closet Connector Housing (CCH) | Non-Shuttered LC Pigtailed Adapter Panels

Keyed to Non-Keyed

CCH - CP

-

- P03

1

2

3

4

5

1 Select module or panel.

CP = Panel

2 Select fibre count.

06 = 6-fibre
08 = 8-fibre
12 = 12-fibre
16 = 16-fibre
24 = 24-fibre

3 Select LC adapter style/colour.

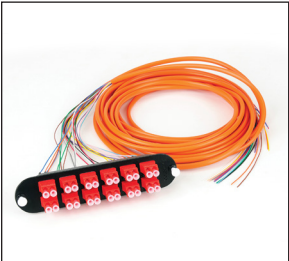
LE = Blue	LA = Red
LH = Orange	LF = Black
LB = Green	LD = Yellow
LL = Brown	LK = Violet
LG = Slate	LN = Rose
LM = White	LP = Aqua

4 Select fibre type.

K = 62.5 µm multimode (OM1)
C = 50 µm multimode (OM2)
S = 50 µm multimode (OM4)
R = Single-mode Corning® SMF-28e+® (OS2)

5 Select cable type.

H = MIC® cable subunit
(standard fibre cable option)
J = Ribbon fibre



Keyed to Keyed

CCH - CP

-

- P03

1

2

3

4

5

1 Select module or panel.

CP = Panel

2 Select fibre count.

06 = 6-fibre
08 = 8-fibre
12 = 12-fibre
16 = 16-fibre
24 = 24-fibre

3 Select LC adapter style/colour.

K1 = Blue	K5 = Red
KH = Orange	KK = Black
KD = Green	K9 = Yellow
KN = Brown	KM = Violet
KL = Slate	KQ = Rose
KP = White	KR = Aqua

4 Select fibre type.

K = 62.5 µm multimode (OM1)
C = 50 µm multimode (OM2)
S = 50 µm multimode (OM4)
R = Single-mode SMF-28e+ (OS2)

5 Select cable type.

H = MIC cable subunit
(standard fibre cable option)
J = Ribbon fibre

[Back to Table of Contents](#)

Field-Terminated Keyed Solutions

Closet Connector Housing (CCH) | Non-Shuttered LC Pigtailed Splice Cassettes

Keyed to Non-Keyed

CCH - CS

1

-

2

-

P00

-

3

4

CCH - CS

1

-

2

-

P00

-

3

4

1 Select fibre count.

- 06 = 6-fibre
- 08 = 8-fibre
- 12 = 12-fibre
- 16 = 16-fibre
- 24 = 24-fibre

3 Select fibre type.

- K = 62.5 µm multimode (OM1)
- B = 50 µm multimode (OM2)
- T = 50 µm multimode (OM3)
- Q = 50 µm multimode (OM4)
- R = Single-mode (OS2)

2 Select LC adapter style/colour.

- | | |
|-------------|-------------|
| LE = Blue | LA = Red |
| LH = Orange | LF = Black |
| LB = Green | LD = Yellow |
| LL = Brown | LK = Violet |
| LG = Slate | LN = Rose |
| LM = White | LP = Aqua |

4 Select splicing type.

- E = Single-fibre splicing
- J = Ribbon splicing (only for fibre counts of 12 or 24)

1 Select fibre count.

- 06 = 6-fibre
- 08 = 8-fibre
- 12 = 12-fibre
- 16 = 16-fibre
- 24 = 24-fibre

3 Select fibre type.

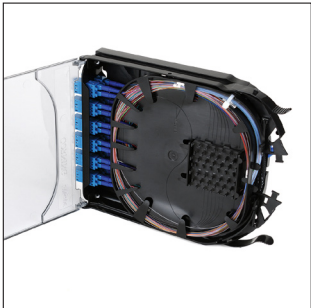
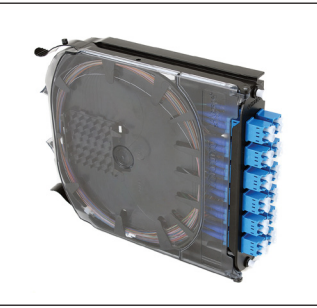
- K = 62.5 µm multimode (OM1)
- B = 50 µm multimode (OM2)
- T = 50 µm multimode (OM3)
- Q = 50 µm multimode (OM4)
- R = Single-mode (OS2)

2 Select LC adapter style/colour.

- | | |
|-------------|-------------|
| K1 = Blue | K5 = Red |
| KH = Orange | KK = Black |
| KD = Green | K9 = Yellow |
| KN = Brown | KM = Violet |
| KL = Slate | KQ = Rose |
| KP = White | KR = Aqua |

4 Select splicing type.

- E = Single-fibre splicing
- J = Ribbon splicing (only for fibre counts of 12 or 24)



[Back to Table of Contents](#)

Field-Terminated Keyed Solutions

Wall-Plate Outlets (WLL) Single-Gang | Non-Shuttered, Loaded LC Adapters

Keyed to Non-Keyed

WLL A

Port 1 2 3 4 5 6

1

-

2

1 Select number of ports and orientation.

- A = 1, straight
- B = 2, straight
- C = 3, straight
- D = 4, straight
- E = 6, straight
- M = 1, angled
- N = 2, angled
- P = 4, angled

2 Select LC adapter style/colour.

- LE = Blue
- LH = Orange
- LB = Green
- LL = Brown
- LG = Slate
- LM = White
- LA = Red
- LF = Black
- LD = Yellow
- LK = Violet
- LN = Rose
- LP = Aqua



Keyed to Keyed

WLL A

Port 1 2 3 4 5 6

1

-

2

1 Select number of ports and orientation.

- A = 1, straight
- B = 2, straight
- C = 3, straight
- D = 4, straight
- E = 6, straight
- M = 1, angled
- N = 2, angled
- P = 4, angled


2 Select LC adapter style/colour.

- K1 = Blue
- KH = Orange
- KD = Green
- KN = Brown
- KL = Slate
- KP = White
- K5 = Red
- KK = Black
- K9 = Yellow
- KM = Violet
- KQ = Rose
- KR = Aqua

[Back to Table of Contents](#)

Field-Terminated Keyed Solutions

Adapter Compatibility Matrix

Adapter Type	Housing Type	
	Wall-Plate Outlets (WLL)	Closet Connector Housing (CCH) LC Adapter Panels
Keystone with Adapter 	Compatible	Not Compatible
Adapters 	Not Compatible	Not Compatible

Field-Terminated Keyed Solutions

Wall-Plate Outlets (WLL)

Single-Gang Wall-Plate – White

WLL - PL - A

1

1 Select number of ports and orientation.

- A = 1, straight
- M = 1, angled
- B = 2, straight
- N = 2, angled
- C = 3, straight
- P = 4, angled
- D = 4, straight
- E = 6, straight

Note: Individual (non-loaded) wall-plates ship with blanks for half of the available ports, e.g., a four-port wall-plate will ship with two blanks



Note: Order keystone adapters separately. Refer to Adapter Compatibility Matrix on page 13 for compatibility guidance.

Note: Adapter not included.

Double-Gang Wall-Plate – White

WLL - PL - B

1

1 Select number of ports and orientation.

- G = 12, straight
- Q = 8, angled

[Back to Table of Contents](#)

Field-Terminated Keyed Solutions

Wall-Plate Outlets (WLL) | Non-Shuttered, LC Keystone Adapters

Keyed to Keyed

WLL - KS -

1

1 Select LC adapter colour.

- | | |
|-------------|-------------|
| K1 = Blue | K5 = Red |
| KH = Orange | KK = Black |
| KD = Green | K9 = Yellow |
| KN = Brown | KM = Violet |
| KL = Slate | KQ = Rose |
| KP = White | KR = Aqua |
| OO = Blank | |



Note: Refer to Adapter Compatibility Matrix on page 13 for compatibility guidance.

Keyed to Non-Keyed

WLL - KS -

1

1 Select LC adapter colour.

- | | |
|-------------|-------------|
| LE = Blue | LA = Red |
| LH = Orange | LF = Black |
| LB = Green | LD = Yellow |
| LL = Brown | LK = Violet |
| LG = Slate | LN = Rose |
| LM = White | LP = Aqua |
| OO = Blank | |

[Back to Table of Contents](#)

Field-Terminated Keyed Solutions

Non-Shuttered LC Duplex Adapters

Keyed to Keyed

ADP - KDLC - CC ☐ RF - CLS

1

- 1 Select adapter colour.
- | | |
|------------|------------|
| N = Blue | R = Red |
| E = Orange | B = Black |
| G = Green | Y = Yellow |
| K = Brown | V = Violet |
| S = Slate | P = Rose |
| W = White | A = Aqua |



Note: Refer to Adapter Compatibility Matrix on page 13 for compatibility guidance.

Keyed to Non-Keyed

ADP - KDLC - CC ☐ RF - CLX

1

- 1 Select adapter colour.
- | | |
|------------|------------|
| N = Blue | R = Red |
| E = Orange | B = Black |
| G = Green | Y = Yellow |
| K = Brown | V = Violet |
| S = Slate | P = Rose |
| W = White | A = Aqua |

Note: These adapters are not compatible with WLL wall-plates.



Note: Refer to Adapter Compatibility Matrix on page 13 for compatibility guidance.

[Back to Table of Contents](#)

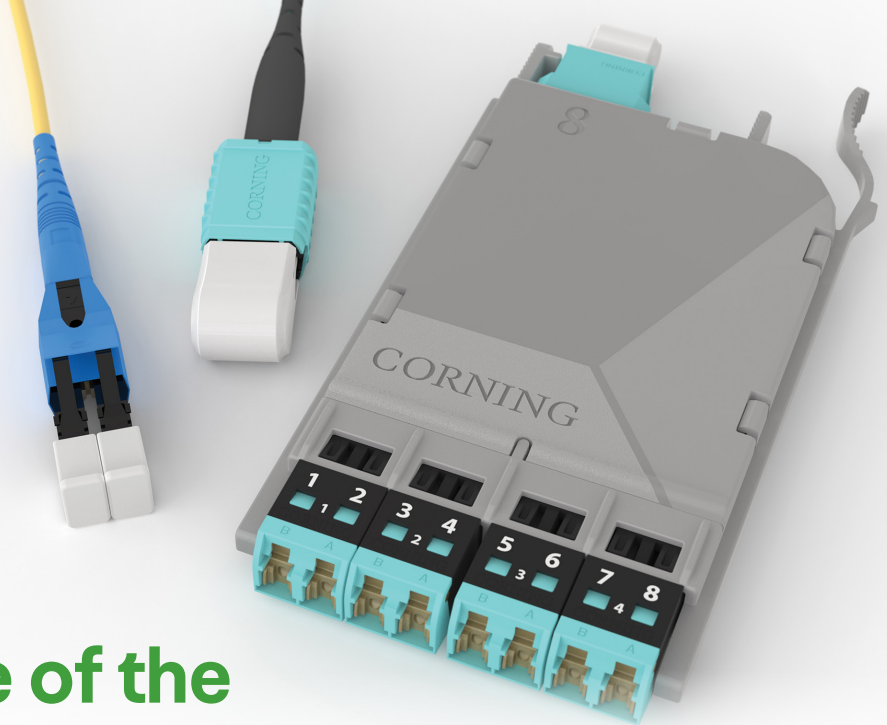


Pre-terminated Solutions

Our EDGE8® and EDGE™ solutions have become an integral part of the secure environment. Providing the user 12 colour-coded options for networks, the MTP® and LC solutions provide added flexibility and identification of networks.

[Back to Table of Contents](#)

Now available with
select EDGE/EDGE8
Pre-terminated
Non-Keyed Solutions!



Corning takes care of the cleaning process for you!

As a leader in optical fibre and connectivity, Corning understands the value of clean connectors. That's why we developed a new factory cleaning and sealing process, Corning® CleanAdvantage™ technology, ensuring a pristine end face upon first use for all our EDGE™ and EDGE8® solutions. So, go ahead and uncap that CleanAdvantage connector and connect with confidence.



Save up to 17% install time

No need for cleaning or visual inspection before the first install.



Save up to 95% on consumables

No cleaning pens, cassettes, and wipes necessary.



Minimises debris transfer

Reduces the risk of debris transfer on the end face, minimises signal degradation.

EDGE™
EDGE8®

Standardized offering

High density paired with high performance at no extra cost.

Learn more at www.corning.com/cleanadvantage

[Back to Table of Contents](#)

Pre-terminated Solutions

EDGE8® Solutions | MTP® Trunks

<input type="checkbox"/>	<input type="checkbox"/>	<input type="checkbox"/>	<input type="checkbox"/>	<input type="checkbox"/>	<input type="checkbox"/>	<input type="checkbox"/>	Z	<input type="checkbox"/>	D	D	<input type="checkbox"/>	<input type="checkbox"/>	<input type="checkbox"/>	M	S
1	2	3	4	5	6	7	8	9	10	11	12	13	14		

1 Select grip.

G = Grip one end
Z = No grip

2 Select MTP® connector.

E5 = MTP 8-fibre (pinned), multimode
E7 = MTP 8-fibre (pinned), single-mode

3 Select MTP connector.

E5 = MTP 8-fibre (pinned), multimode
E7 = MTP 8-fibre (pinned), single-mode

4 Select MTP connector colour.

(Colour applies to both ends)

N = Blue	R = Red
E = Orange	B = Black
G = Green	Y = Yellow
K = Brown	V = Violet
S = Slate	P = Rose
W = White	A = Aqua

5 Select fibre count.

24 = 24-fibre
72 = 72-fibre

6 Select fibre type.

T = 50 µm multimode (OM3)
Q = 50 µm multimode (OM4)
G = Single-mode Ultra (OS2)

7 Select cable type.

Z = LSZH™ CPR B2ca rated

8 Select jacket colour.

N = Blue	R = Red
Y = Yellow	A = Aqua
(single mode)	(multimode)
G = Green	

9 Defines leg length.

D = 840 mm legs

Note: Furcation legs are colour coded by fibre type

10 Defines leg length.

D = 840 mm legs

Note: Furcation legs are colour coded by fibre type

11 Select wiring/polarity.

U = Universal
P = Straight-through

12 Select cable length.

002-300 m

(1-m increments measured from furcation plug to furcation plug)

Note: Longer lengths available upon request

13 Select unit of measure.

M = Metres

14 Defines suffix.

S = Secure



[Back to Table of Contents](#)

Pre-terminated Solutions

EDGE8® Solutions | MTP® Extender Trunks

<input type="checkbox"/>	<input type="checkbox"/>	<input type="checkbox"/>	<input type="checkbox"/>	<input type="checkbox"/>	<input type="checkbox"/>	<input type="checkbox"/>	Z	<input type="checkbox"/>	D	C	X	<input type="checkbox"/>	<input type="checkbox"/>	<input type="checkbox"/>	M	S
1	2	3	4	5	6	7	8	9	10	11	12	13	14			

1 Select grip.

G = Grip one end
Z = No grip

2 Select MTP® connector.

E5 = MTP 8-fibre (pinned), multimode
E7 = MTP 8-fibre (pinned), single-mode

3 Select MTP connector.

E6 = MTP 8-fibre (non-pinned), multimode
E8 = MTP 8-fibre (non-pinned), single-mode

4 Select MTP connector colour.

(Colour applies to both ends)

N = Blue	R = Red
E = Orange	B = Black
G = Green	Y = Yellow
K = Brown	V = Violet
S = Slate	P = Rose
W = White	A = Aqua

5 Select fibre count.

24 = 24-fibre
72 = 72-fibre

6 Select fibre type.

T = 50 µm multimode (OM3)
Q = 50 µm multimode (OM4)
G = Single-mode Ultra (OS2)

7 Select cable type.

Z = LSZH™ CPR B2ca rated

8 Select jacket colour.

N = Blue	R = Red
Y = Yellow	A = Aqua
(single mode)	(multimode)
G = Green	

9 Defines leg length.

D = 840 mm legs

10 Defines leg length.

C = 1500 mm

Note: Furcation legs are colour coded by fibre type

11 Defines wiring/polarity.

X = Extender trunk (straight-through)

12 Select cable length.

002-300 m
(1-m increments measured from furcation plug to furcation plug)

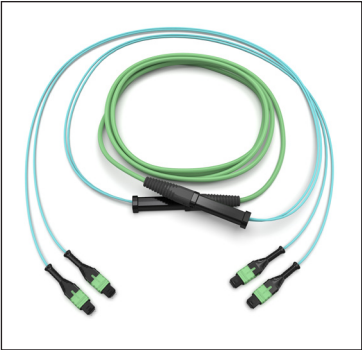
Note: Longer lengths available upon request

13 Select unit of measure.

M = Metres

14 Defines suffix.

S = Secure



[Back to Table of Contents](#)

Pre-terminated Solutions

EDGE8® Solutions | MTP® Hybrid Trunks

<input type="checkbox"/>	<input type="checkbox"/>	<input type="checkbox"/>	<input type="checkbox"/>	<input type="checkbox"/>	<input type="checkbox"/>	<input type="checkbox"/>	Z	<input type="checkbox"/>	D	<input type="checkbox"/>	W	<input type="checkbox"/>	<input type="checkbox"/>	<input type="checkbox"/>	M	S
1	2	3	4	5	6	7	8	9	10	11	12	13	14			

1 Select grip.

G = Grip one end
Z = No grip

2 Select MTP® connector.

E5 = MTP 8-fibre (pinned), multimode
E7 = MTP 8-fibre (pinned), single-mode

3 Select LC connector.

79 = LC uniboot, multimode
78 = LC uniboot, single-mode

4 Select MTP and LC connector colour.

(Colour applies to both ends)

N = Blue	R = Red
E = Orange	B = Black
G = Green	Y = Yellow
K = Brown	V = Violet
S = Slate	P = Rose
W = White	A = Aqua

5 Select fibre count.

24 = 24-fibre
72 = 72-fibre

6 Select fibre type.

T = 50 µm multimode (OM3)
Q = 50 µm multimode (OM4)
G = Single-mode Ultra (OS2)

7 Select cable type.

Z = LSZH™ CPR B2ca rated

8 Select jacket colour.

N = Blue	R = Red
Y = Yellow	A = Aqua
(single mode)	(multimode)
G = Green	

9 Defines leg length.

D = 840 mm legs

Note: Furcation legs are colour coded by fibre type

10 Select leg length.

K = 600 mm
L = 1000 mm
M = 1200 mm
N = 1500 mm
P = 1800 mm

Note: Furcation legs are colour coded by fibre type

11 Defines wiring/polarity.

W = Universal hybrid

12 Select cable length.

002-300 m
(1-m increments measured from furcation plug to furcation plug)

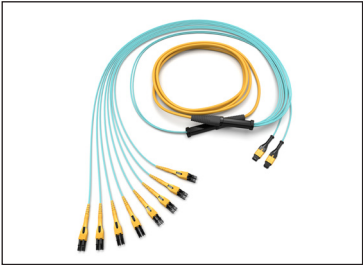
Note: Longer lengths available upon request

13 Select unit of measure.

M = Metres

14 Defines suffix.

S = Secure



[Back to Table of Contents](#)

Pre-terminated Solutions

EDGE8® Solutions | MTP® Hybrid Extender Trunks

<input type="checkbox"/>	<input type="checkbox"/>	<input type="checkbox"/>	<input type="checkbox"/>	<input type="checkbox"/>	<input type="checkbox"/>	<input type="checkbox"/>	Z	<input type="checkbox"/>	C	<input type="checkbox"/>	Z	<input type="checkbox"/>	<input type="checkbox"/>	<input type="checkbox"/>	<input type="checkbox"/>	S
1	2	3	4	5	6	7	8	9	10	11	12	13	14			

1 Select grip.

G = Grip one end
Z = No grip

2 Select MTP® connector.

E6 = MTP 8-fibre (non-pinned), multimode
E8 = MTP 8-fibre (non-pinned), single-mode

3 Select LC connector.

79 = LC uniboot, multimode
78 = LC uniboot, single-mode

4 Select MTP and LC connector colour.

(Colour applies to both ends)

N = Blue	R = Red
E = Orange	B = Black
G = Green	Y = Yellow
K = Brown	V = Violet
S = Slate	P = Rose
W = White	A = Aqua

5 Select fibre count.

24 = 24-fibre
72 = 72-fibre

6 Select fibre type.

T = 50 µm multimode (OM3)
Q = 50 µm multimode (OM4)
G = Single-mode Ultra (OS2)

7 Select cable type.

Z = LSZH™ CPR B2ca rated

8 Select jacket colour.

N = Blue	R = Red
Y = Yellow	A = Aqua
(single mode)	(multimode)
G = Green	

9 Defines leg length.

C = 1500 mm legs

Note: Furcation legs are colour coded by fibre type

10 Select leg length.

K = 600 mm
L = 1000 mm
M = 1200 mm
N = 1500 mm
P = 1800 mm

Note: Furcation legs are colour coded by fibre type

11 Defines wiring/polarity.

Z = Hybrid extender

12 Select cable length.

002-300 m
(1-m increments measured from furcation plug to furcation plug)

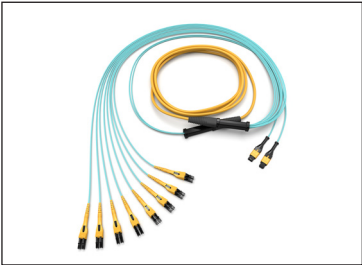
Note: Longer lengths available upon request

13 Select unit of measure.

M = Metres

14 Defines suffix.

S = Secure



[Back to Table of Contents](#)

Pre-terminated Solutions

EDGE8® Solutions | MTP® to LC Harness

H08Z-M S

1

2

3

4

5

6

7

8

9

10

11

12

1 Select MTP® connector.

- E5 = MTP 8-fibre (pinned), multimode
- E7 = MTP 8-fibre (pinned), single-mode
- E6 = MTP 8-fibre (non-pinned), multimode
- E8 = MTP 8-fibre (non-pinned), single-mode

2 Select LC connector.

- 79 = LC uniboot, multimode
- 78 = LC uniboot, single-mode

3 Select MTP and LC connector colour.

- (Colour applies to both ends)
- | | |
|------------|------------|
| N = Blue | R = Red |
| E = Orange | B = Black |
| G = Green | Y = Yellow |
| K = Brown | V = Violet |
| S = Slate | P = Rose |
| W = White | A = Aqua |

4 Defines fibre count.

- 08 = 8-fibre

5 Select fibre type.

- T = 50 µm multimode (OM3)
- Q = 50 µm multimode (OM4)
- G = Single-mode Ultra (OS2)

6 Select cable type.

- Z = LSZH™

7 Select jacket colour.

- | | |
|------------|----------|
| N = Blue | R = Red |
| Y = Yellow | A = Aqua |
- (single mode) (multimode)
- G = Green

8 Select leg length.

- J = 300 mm
- K = 600 mm
- L = 1000 mm
- M = 1200 mm
- N = N 1500 mm
- P = 1800 mm

Note: Furcation legs are colour coded by fibre type

9 Select wiring/polarity.

- A = Type A
- B = Type B

10 Select cable length.

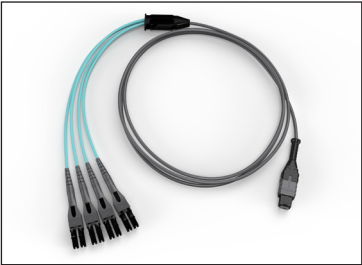
- 001-060 m
- (1-m increments measured from MTP to furcation plug and does not include leg length)*

11 Select unit of measure.

- M = Metres

12 Defines suffix.

- S = Secure



[Back to Table of Contents](#)

Pre-terminated Solutions

EDGE8® Solutions | MTP® to Shuttered LC Duplex Modules

ECM8 -

1

 M08 -

2

3

 -

4

5

6

 - ULL

7

- 1

Select wiring/polarity.

U = Universal
R = Straight-through
- 2

Defines fibre count.

08 = 8-fibre
- 3

Select LC connector.

05 = LC duplex, multimode
04 = LC duplex, single-mode

- 4

Select LC connector colour.

N = Blue R = Red
E = Orange B = Black
G = Green Y = Yellow
K = Brown V = Violet
S = Slate P = Rose
W = White A = Aqua
- 5

Select MTP® connector.

E6 = MTP 8-fibre (non-pinned) multimode
E8 = MTP 8-fibre (non-pinned) single-mode

- 6

Select MTP connector colour.

N = Blue R = Red
E = Orange B = Black
G = Green Y = Yellow
K = Brown V = Violet
S = Slate P = Rose
W = White A = Aqua
- 7

Select fibre type.

Q = 50 µm multimode (OM4)
G = Single-mode Ultra (OS2)



Note: Custom configurations with multiple LC adapter colours can be available upon request. Please contact Customer Care for these configurations.

Pre-terminated Solutions

EDGE8® Solutions | MTP® to Shuttered LC Port Breakout Modules

ECM8 - - B B - M

1

2

3

4

5

6

7

8

9

10

1 Select LC connector.
05 = LC duplex, single-mode
04 = LC duplex, multimode

2 Select LC connector colour.
N = Blue R = Red
E = Orange B = Black
G = Green Y = Yellow
K = Brown V = Violet
S = Slate P = Rose
W = White A = Aqua

3 Select MTP® connector.
E6 = MTP, 8-fibre (non-pinned), multimode
E8 = MTP, 8-fibre (non-pinned), single-mode

4 Select MTP connector colour.
N = Blue R = Red
E = Orange B = Black
G = Green Y = Yellow
K = Brown V = Violet
S = Slate P = Rose
W = White A = Aqua

5 Select fibre type.
Q = 50 µm multimode (OM4)
G = Single-mode Ultra (OS2)

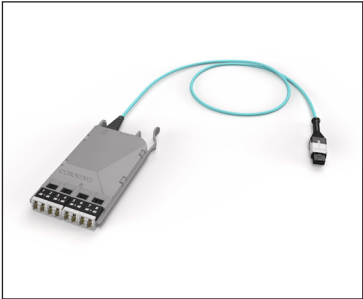
6 Select cable type.
Z = LSZH™

7 Select jacket colour.
N = Blue R = Red
Y = Yellow A = Aqua
(single mode) (multimode)
G = Green

8 Select polarity.
B = Type B

9 Select cable length.
001-025 m
(1-m increments measured from MTP to back of module)

10 Select unit of measure.
M = Metres



[Back to Table of Contents](#)

Pre-terminated Solutions

EDGE8® Solutions | Shuttered Reverse Polarity MTP® Adapter Panels*

EDGE8 - CP

1

-

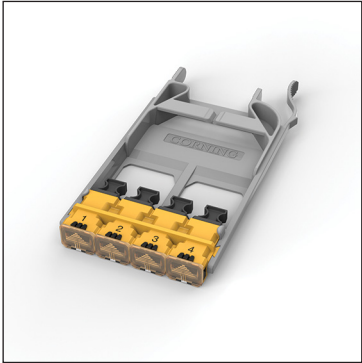
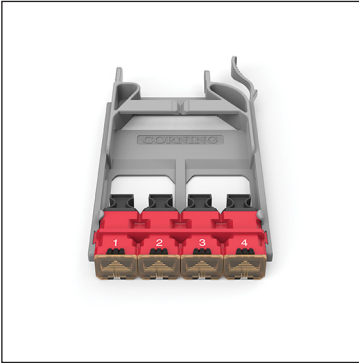
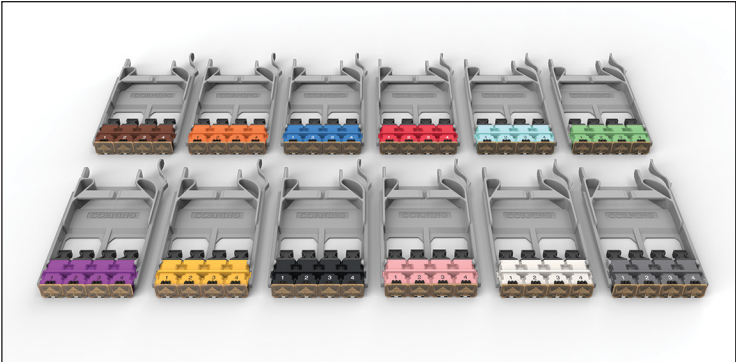
2

1 Select fibre count.

- 08 = 8-fibre
- 16 = 16-fibre
- 24 = 24-fibre
- 32 = 32-fibre

2 Select MTP® adapter colour.

- V6 = Blue
- V9 = Orange
- V4 = Green
- VB = Brown
- V7 = Slate
- VC = White
- V2 = Red
- V1 = Black
- VE = Yellow
- V8 = Violet
- VF = Rose
- V3 = Aqua



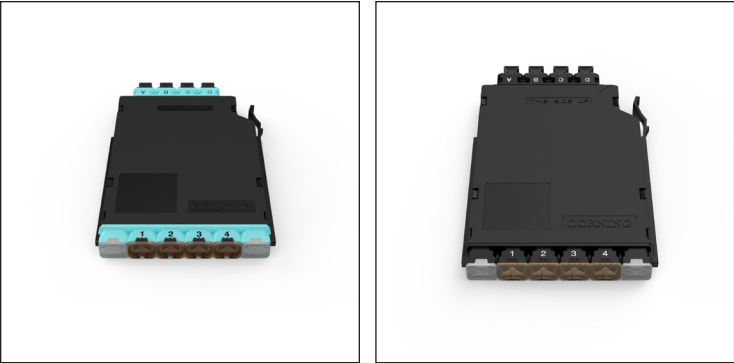
*Not available with Corning® CleanAdvantage™ Technology at this time.

[Back to Table of Contents](#)

Pre-terminated Solutions

EDGE™ 4x4 Mesh Modules*

The multiclassification mesh solution addresses the complexities associated with deploying secure communications cabling to the workstation. It utilises the innovative mesh module to consolidate multiple disparate security enclave cables into one cable which can be run to a workstation while maintaining network and classification separation. The 32-fibre mesh module takes 2 fibres from four specified network classification input trunk cables and transitions them to one output trunk cable. This output trunk cable the distributes the four specified networks to end users.



Part Number	Adapter Type Front	Adapter Colour Front	Adapter Type Back	Fibre Category
EMM-MM32-9393Q	Shuttered MTP® (pinned)	Aqua	MTP (Pinned)	50 µm Multimode (OM4)
EMM-MM32-9375Q	Shuttered MTP (pinned)	Aqua	MTP (Non-pinned)	50 µm Multimode (OM4)
EMM-SM32-8989G	Shuttered MTP (pinned)	Black	MTP (Pinned)	Single-mode (OS2)
EMM-SM32-8990G	Shuttered MTP (pinned)	Black	MTP (Non-pinned)	Single-mode (OS2)

**Not available with Corning® CleanAdvantage™ Technology at this time.*

[Back to Table of Contents](#)

Pre-terminated Solutions

EDGE8® Solutions | Shuttered LC Adapter Panels*

EMOD8 - CP 08 - ☐ ☐

1

- 1 Select LC adapter colour.
- | | |
|-------------|-------------|
| AE = Blue | DC = Red |
| DH = Orange | AC = Black |
| AF = Green | DD = Yellow |
| DE = Brown | DJ = Violet |
| DF = Slate | DK = Rose |
| DG = White | AD = Aqua |



**Not available with Corning® CleanAdvantage™ Technology at this time.*

[Back to Table of Contents](#)

Pre-terminated Solutions

EDGE8® Solutions | MTP® Jumpers

J08Z-NS

1

2

3

4

5

6

7

8

9

10

11

12

1 Select MTP® connector.

- E5 = MTP 8-fibre (pinned), multimode
- E7 = MTP 8-fibre (pinned), single-mode
- E6 = MTP 8-fibre (non-pinned), multimode
- E8 = MTP 8-fibre (non-pinned), single-mode

2 Select MTP connector.

- E5 = MTP 8-fibre (pinned), multimode
- E7 = MTP 8-fibre (pinned), single-mode
- E6 = MTP 8-fibre (non-pinned), multimode
- E8 = MTP 8-fibre (non-pinned), single-mode

3 Select MTP connector colour.

- (Colour applies to both ends)
- | | |
|------------|------------|
| N = Blue | R = Red |
| E = Orange | B = Black |
| G = Green | Y = Yellow |
| K = Brown | V = Violet |
| S = Slate | P = Rose |
| W = White | A = Aqua |

4 Defines fibre count.

- O8 = 8-fibre

5 Select fibre type.

- T = 50 µm multimode (OM3)
- Q = 50 µm multimode (OM4)
- G = Single-mode Ultra (OS2)

6 Defines cable type.

- Z = LSZH™

7 Select jacket colour.

- | | |
|------------|----------|
| N = Blue | R = Red |
| Y = Yellow | A = Aqua |
- (single mode) (multimode)
- G = Green

8 Defines furcation length.

- N = No furcation

9 Select wiring/polarity.

- A = TIA-568 Type-A (straight-through)
- B = TIA-568 Type-B (MTP flip)

10 Select cable length.

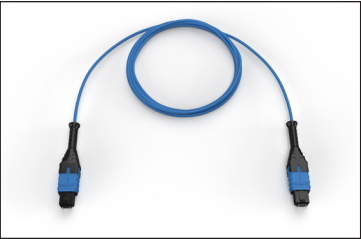
- 001-060 m (measured in 1-m increments)

11 Select unit of measure.

- M = Metres

12 Defines suffix.

- S = Secure



[Back to Table of Contents](#)

Pre-terminated Solutions

EDGE™ Solutions | MTP® Trunks

<div></div>	<div></div> <div></div>	<div></div> <div></div>	<div></div>	<div></div> <div></div>	<div></div>	Z	<div></div>	D	D	<div></div>	<div></div> <div></div> <div></div>	M	S
1	2	3	4	5	6	7	8	9	10	11	12	13	14

1 Select grip.

G = Grip one end
Z = No grip

2 Select MTP® connector.

75 = MTP 12-fibre (non-pinned), multimode
90 = MTP 12-fibre (non-pinned), single-mode

3 Select MTP connector.

75 = MTP 12-fibre (non-pinned), multimode
90 = MTP 12-fibre (non-pinned), single-mode

4 Select MTP connector colour.

(Colour applies to both ends)

N = Blue	R = Red
E = Orange	B = Black
G = Green	Y = Yellow
K = Brown	V = Violet
S = Slate	P = Rose
W = White	A = Aqua

5 Select fibre count.

24 = 24-fibre
72 = 72-fibre

6 Select fibre type.

T = 50 µm multimode (OM3)
Q = 50 µm multimode (OM4)
G = Single-mode Ultra (OS2)

7 Select cable type.

Z = LSZH™ CPR B2ca rated

8 Select jacket colour.

N = Blue	R = Red
Y = Yellow	A = Aqua
(single mode)	(multimode)
G = Green	

9 Defines leg length.

D = 840 mm legs

Note: Furcation legs are colour coded by fibre type

10 Defines leg length.

D = 840 mm legs

Note: Furcation legs are colour coded by fibre type

11 Select wiring/polarity.

U = Universal
P = Straight-through

12 Select cable length.

002-300 m

(1-m increments measured from furcation plug to furcation plug)

Note: Longer lengths available upon request

13 Select unit of measure.

M = Metres

14 Defines suffix.

S = Secure



[Back to Table of Contents](#)

Pre-terminated Solutions

EDGE™ Solutions | MTP® Extender Trunks

<input type="checkbox"/>	<input type="checkbox"/>	<input type="checkbox"/>	<input type="checkbox"/>	<input type="checkbox"/>	<input type="checkbox"/>	<input type="checkbox"/>	Z	<input type="checkbox"/>	C	D	X	<input type="checkbox"/>	<input type="checkbox"/>	<input type="checkbox"/>	M	S
1	2	3	4	5	6	7	8	9	10	11	12	13	14			

1 Select grip.

G = Grip one end
Z = No grip

2 Select MTP® connector.

93 = MTP 12-fibre (pinned), multimode
89 = MTP 12-fibre (pinned), single-mode

3 Select MTP connector.

75 = MTP 12-fibre (non-pinned), multimode
90 = MTP 12-fibre (non-pinned), single-mode

4 Select MTP connector colour.

(Colour applies to both ends)

N = Blue	R = Red
E = Orange	B = Black
G = Green	Y = Yellow
K = Brown	V = Violet
S = Slate	P = Rose
W = White	A = Aqua

5 Select fibre count.

24 = 24-fibre
72 = 72-fibre

6 Select fibre type.

T = 50 µm multimode (OM3)
Q = 50 µm multimode (OM4)
G = Single-mode Ultra (OS2)

7 Select cable type.

Z = LSZH™ CPR B2ca rated

8 Select jacket colour.

N = Blue	R = Red
Y = Yellow	A = Aqua
(single mode)	(multimode)
G = Green	

9 Defines leg length.

C = 1500 mm legs

10 Defines leg length.

D = 840 mm legs

Note: Furcation legs are colour coded by fibre type

11 Defines wiring/polarity.

X = Extender trunk (straight-through)

12 Select cable length.

002-300 m
(1-m increments measured from furcation plug to furcation plug)

Note: Longer lengths available upon request

13 Select unit of measure.

M = Metres

14 Defines suffix.

S = Secure



[Back to Table of Contents](#)

Pre-terminated Solutions

EDGE™ Solutions | MTP® Hybrid Trunks

<input type="checkbox"/>	<input type="checkbox"/>	<input type="checkbox"/>	<input type="checkbox"/>	<input type="checkbox"/>	<input type="checkbox"/>	<input type="checkbox"/>	Z	<input type="checkbox"/>	D	<input type="checkbox"/>	W	<input type="checkbox"/>	<input type="checkbox"/>	<input type="checkbox"/>	M	S
1	2	3	4	5	6	7	8	9	10	11	12	13	14			

1 Select grip.

G = Grip one end
Z = No grip

2 Select MTP® connector.

75 = MTP 12-fibre (non-pinned), multimode
90 = MTP 12-fibre (non-pinned), single-mode

3 Select LC connector.

79 = LC uniboot, multimode
78 = LC uniboot, single-mode

4 Select MTP and LC connector colour.

(Colour applies to both ends)

N = Blue	R = Red
E = Orange	B = Black
G = Green	Y = Yellow
K = Brown	V = Violet
S = Slate	P = Rose
W = White	A = Aqua

5 Select fibre count.

24 = 24-fibre
72 = 72-fibre

6 Select fibre type.

T = 50 µm multimode (OM3)
Q = 50 µm multimode (OM4)
G = Single-mode Ultra (OS2)

7 Select cable type.

Z = LSZH™ CPR B2ca rated

8 Select jacket colour.

N = Blue	R = Red
Y = Yellow	A = Aqua
(single mode)	(multimode)
G = Green	

9 Defines MTP leg length.

D = 840 mm legs

Note: Furcation legs are colour coded by fibre type

10 Select LC leg length.

K = 600 mm legs
L = 1000 mm legs
M = 1200 mm legs
N = 1500 mm legs
P = 1800 mm legs

Note: Furcation legs are colour coded by fibre type

11 Defines wiring/polarity.

W = Universal hybrid

12 Select cable length.

002-300 m
(1-m increments measured from furcation plug to furcation plug)

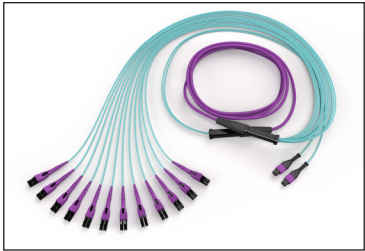
Note: Longer lengths available upon request

13 Select unit of measure.

M = Metres

14 Defines suffix.

S = Secure



[Back to Table of Contents](#)

Pre-terminated Solutions

EDGE™ Solutions | MTP® Hybrid Extender Trunks

<input type="checkbox"/>	<input type="checkbox"/>	<input type="checkbox"/>	<input type="checkbox"/>	<input type="checkbox"/>	<input type="checkbox"/>	<input type="checkbox"/>	Z	<input type="checkbox"/>	C	<input type="checkbox"/>	Z	<input type="checkbox"/>	<input type="checkbox"/>	<input type="checkbox"/>	M	S
1	2	3	4	5	6	7	8	9	10	11	12	13	14			

1 Select grip.

G = Grip one end
Z = No grip

2 Select MTP® connector.

93 = MTP 12-fibre (pinned), multimode
89 = MTP 12-fibre (pinned), single-mode

3 Select LC connector.

79 = LC uniboot, multimode
78 = LC uniboot, single-mode

4 Select MTP and LC connector colour.
(Colour applies to both ends)

N = Blue	R = Red
E = Orange	B = Black
G = Green	Y = Yellow
K = Brown	V = Violet
S = Slate	P = Rose
W = White	A = Aqua

5 Select fibre count.

24 = 24-fibre
72 = 72-fibre

6 Select fibre type.

T = 50 µm multimode (OM3)
Q = 50 µm multimode (OM4)
G = Single-mode Ultra (OS2)

7 Select cable type.

Z = LSZH™ CPR B2ca rated

8 Select jacket colour.

N = Blue	R = Red
Y = Yellow	A = Aqua
(single mode)	(multimode)
G = Green	

9 Defines MTP leg length.

C = 1500 mm legs

Note: Furcation legs are colour coded by fibre type

10 Select LC leg length.

K = 600 mm legs
L = 1000 mm legs
M = 1200 mm legs
N = 1500 mm legs
P = 1800 mm legs

Note: Furcation legs are colour coded by fibre type

11 Defines wiring/polarity.

Z = Hybrid extender

12 Select cable length.

002-300 m
(1-m increments measured from furcation plug to furcation plug)

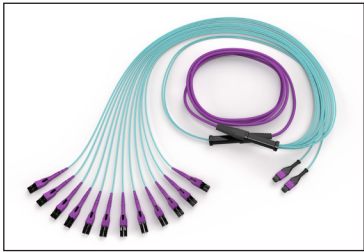
Note: Longer lengths available upon request

13 Select unit of measure.

M = Metres

14 Defines suffix.

S = Secure



[Back to Table of Contents](#)

Pre-terminated Solutions

EDGE™ Solutions | MTP® to LC Harness

H

12

M

-

M

S

1

2

3

4

5

6

7

8

9

10

11

12

1 Select MTP® connector.

- 93 = MTP 12-fibre (pinned), multimode
- 75 = MTP 12-fibre (non-pinned), multimode
- 89 = MTP 12-fibre (pinned), single-mode
- 90 = MTP 12-fibre (non-pinned), single-mode

2 Select LC connector.

- 79 = LC uniboot, multimode
- 78 = LC uniboot, single-mode

3 Select MTP and LC connector colour.

(Colour applies to both ends)

- | | |
|------------|------------|
| N = Blue | R = Red |
| E = Orange | B = Black |
| G = Green | Y = Yellow |
| K = Brown | V = Violet |
| S = Slate | P = Rose |
| W = White | A = Aqua |

4 Defines fibre count.

- 12 = 12-fibre

5 Select fibre type.

- T = 50 µm multimode (OM3)
- Q = 50 µm multimode (OM4)
- G = Single-mode Ultra (OS2)

6 Select cable type.

- Z = LSZH™

7 Select jacket colour.

- | | |
|---------------|-------------|
| N = Blue | R = Red |
| Y = Yellow | A = Aqua |
| (single mode) | (multimode) |
| G = Green | |

8 Select leg length.

- J = 300 mm legs
- K = 600 mm legs
- L = 1000 mm legs
- M = 1200 mm legs
- N = 1500 mm legs
- P = 1800 mm legs

Note: Furcation legs are colour coded by fibre type

9 Select wiring/polarity.

- A = Type A
- B = Type B

10 Select cable length.

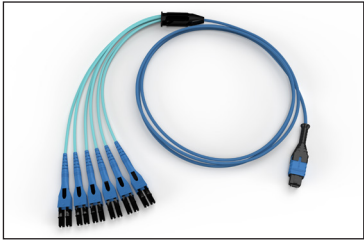
- 001-060 m
- (1-m increments measured from MTP to furcation plug and does not include leg length)*

11 Select unit of measure.

- M = Metres

12 Defines suffix.

- S = Secure



[Back to Table of Contents](#)

LC to LC Trunks*



1 Select grip.

- C = No pulling grip
A = Pulling grip on one end
(packaged outside reel)
B = Pulling grips on both ends
(first packaged outside reel,
second packaged inside reel)

2 Select connector on first end.

- (packaged outside reel)
- Single-mode
- 00 = Pigtail*
- 02 = LC Simplex UPC
- 04 = LC Duplex UPC
- 18 = LC Duplex APC
- 22 = LC Simplex APC
- 44 = SC Simplex APC
- 58 = SC Simplex UPC
- 66 = SC Duplex APC
- 72 = SC Duplex UPC
- 78 = LC Duplex Uniboot UPC **LZB
- 80 = LC Duplex Uniboot APC **LZB
- Multimode
- 00 = Pigtail*
- 03 = LC Simplex
- 05 = LC Duplex
- 39 = SC Simplex
- 57 = SC Duplex
- 79 = LC Duplex Uniboot **LZB

3 Select connector on second end.

(packaged inside reel)
See selection under 2.

4 Select fibre count.

- 04 = 4 fibres ***8ZD and 6ZD
08 = 8 fibres ***8ZD and 6ZD
12 = 12 fibres ***8ZD and 6ZD
24 = 24 fibres LZB
72 = 72 fibres LZB

5 Select fibre type.

- T = 50 μm Multimode (OM3)
Q = 50 μm Multimode (OM4)
G = Single-mode Ultra (OS2)

6 Defines cable type.

- LZB = B2 MIC 250 Indoor cable
8ZD = Dca Indoor tight-buffered
cable (mini-breakout) i-MIC
(900um only)
6ZD = Dca Indoor tight-buffered
cable (2.0 mm only)

* Pigtail available on straight polarity only.

****Only available with the cable code LZB**

***4,8 and 12F only available in 8ZD with 900um leg OD and 6ZD with 2.0mm leg OD.

7 Select leg length on first end.

- O = Pigtail*
J = 300 mm
C = 400 μ m
U = 500 mm
K = 600 mm
W = 700 mm
D = 800 mm
I = 900 mm
L = 1,000 mm
M = 1,200 mm
B = 1,500 mm
P = 1,800 mm
Q = 2,000 mm

8 Select leg OD on first end.

- 0 = Pigtail*
A = 2.0 mm
B = 900 μ m

9 Select leg length on second end.

See selection under 7.

10 Select leg OD on second end.

See selection under 8.

11 Select polarity.

- C = Classic (Type-B)
P = Straight-through (Type-A)

12 Select cable length in m.

003-200 M
Assembly length is measured
from furcation point to furcation
point. (+1/-0 m)

13 Select jacket colour.

- YL = Yellow GR = Green
OR = Orange RD = Red
BL = Blue

Pre-terminated Solutions

EDGE™ Solutions | MTP® to Shuttered LC Duplex Modules

ECM -

1

 M 12 -

2

3

 -

4

5

6

7

1

Select wiring/polarity.

U = Universal
R = Straight-through

2

Defines fibre count.

12 = 12-fibre

3

Select LC connector.

05 = LC duplex, multimode
04 = LC duplex, single-mode

4

Select LC connector colour.

N = Blue R = Red
E = Orange B = Black
G = Green Y = Yellow
K = Brown V = Violet
S = Slate P = Rose
W = White A = Aqua

5

Select MTP® connector.

93 = MTP, 12-fibre (pinned), multimode
89 = MTP, 12-fibre (pinned), single-mode

6

Select MTP connector colour.

N = Blue R = Red
E = Orange B = Black
G = Green Y = Yellow
K = Brown V = Violet
S = Slate P = Rose
W = White A = Aqua

7

Select fibre type.

T = 50 µm multimode (OM3)
Q = 50 µm multimode (OM4)
G = Single-mode, Ultra (OS2)

Corning Optical Communications

[Back to Table of Contents](#)

Ordering Guide | LAN-1852-BEN | Page 36

Pre-terminated Solutions

EDGE™ Solutions | MTP® Adapter Panels*

Non-Shuttered

EDGE - CP

1

-

2

- 1
- Select fibre count.
- 12 = One MTP® adapter
- 24 = Two MTP adapters
- 48 = Four MTP adapters

- 2
- Select colour code.
- Q4 = Blue
- Q5 = Orange
- Q1 = Green
- QA = Brown
- Q7 = Slate
- Q8 = White
- Q2 = Red
- 90 = Black
- Q3 = Yellow
- Q6 = Violet
- Q9 = Rose
- E3 = Aqua



Reverse Polarity Shutters

EDGE - CP

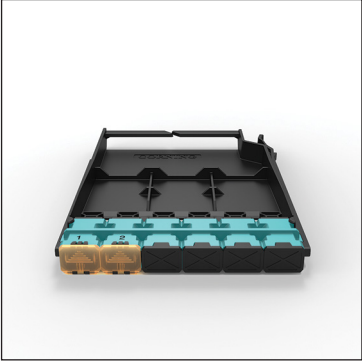
1

-

2

- 1
- Select fibre count.
- 24 = 24-fibre hex plex adapter
- 48 = 48-fibre hex plex adapter
- 72 = 72-fibre hex plex adapter

- 2
- Select colour code.
- U6 = Blue
- U9 = Orange
- U4 = Green
- UB = Brown
- U7 = Slate
- UC = White
- U2 = Red
- U1 = Black
- UE = Yellow
- U8 = Violet
- UF = Rose
- U3 = Aqua



*Not available with Corning® CleanAdvantage™ Technology at this time.

Pre-terminated Solutions

EDGE™ Solutions | MTP® Jumpers

J	<input type="text"/>	<input type="text"/>	<input type="text"/>	<input type="text"/>	12	<input type="text"/>	Z	<input type="text"/>	-	N	<input type="text"/>	<input type="text"/>	<input type="text"/>	M	S
	1	2	3	4	5	6	7	8	9	10		11	12		

- 1 Select MTP® connector.**
75 = MTP, 12-fibre (non-pinned), multimode
90 = MTP, 12-fibre (non-pinned), single-mode
93 = MTP, 12-fibre (pinned), multimode
89 = MTP, 12-fibre (pinned), single-mode

- 2 Select MTP connector.**
See options listed above.

- 3 Select connector colour.**
(Colour applies to both ends)
N = Blue R = Red
E = Orange B = Black
G = Green Y = Yellow
K = Brown V = Violet
S = Slate P = Rose
W = White A = Aqua

- 4 Defines fibre count.**
12 = 12-fibre

- 5 Select fibre type.**
T = 50 µm multimode (OM3)
Q = 50 µm multimode (OM4)
G = Single-mode Ultra (OS2)

- 6 Defines cable type.**
Z = LSZH™
- 7 Select jacket colour.**
N = Blue R = Red
Y = Yellow A = Aqua
(single mode) (multimode)
G = Green

- 8 Defines furcation length.**
N = No furcation

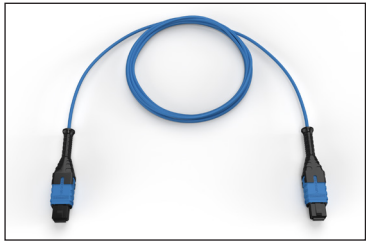
- 9 Select wiring/polarity.**
A = TIA-568 Type-A
(straight-through)

B = TIA-568 Type-B
(MTP flip)

- 10 Select jumper length.**
001-060 m
(1-m increments measured from MTP to MTP)

- 11 Select unit of measure.**
M = Metres

- 12 Defines suffix.**
S = Secure



[Back to Table of Contents](#)

Pre-terminated Solutions

Secure Duplex Patch Cords

<input type="text"/>	<input type="text"/>	<input type="text"/>	<input type="text"/>	0 2	<input type="text"/>	5 B	<input type="text"/>	<input type="text"/>	<input type="text"/>	<input type="text"/>	M -	<input type="text"/>	<input type="text"/>
1	2	3	4	5	6	7	8	9	10				

1 Select LC connector on first end.

00 = No connectors (pigtail)
Multimode
05 = LC PC Duplex Coloured
26 = LC PC Duplex Keyed
Single-Mode
04 = LC UPC Duplex Coloured
18 = LC APC Duplex Coloured
33 = LC UPC Duplex Keyed
51 = LC APC Duplex Keyed

2 Select LC or SC connector on second end.

Multimode
05 = LC PC Duplex Coloured
26 = LC PC Duplex Keyed
57 = SC PC Duplex Standard
Single-Mode
04 = LC UPC Duplex Coloured
18 = LC APC Duplex Coloured
33 = LC UPC Duplex Keyed
51 = LC APC Duplex Keyed
66 = SC APC Duplex Standard
72 = SC UPC Duplex Standard

3 Determines fibre count.

4 Select fibre type.

K = 62.5 µm Multimode (OM1)
Q = 50 µm Multimode (OM4)
G = Single-Mode Ultra (OS2)

5 Defines cable type.

5B = Zippcord LSZH™, 2.0 mm
CPR B2ca

6 Select colour of LC connector on first end.

N = Blue	R = Red
E = Orange	B = Black
G = Green	Y = Yellow
K = Brown	V = Violet
S = Slate	P = Rose
W = White	A = Aqua
Z = Standard	

7 Select colour of LC connector on second end.

N = Blue	R = Red
E = Orange	B = Black
G = Green	Y = Yellow
K = Brown	V = Violet
S = Slate	P = Rose
W = White	A = Aqua
Z = Standard	

8 Select assembly length in m.

002-199

Note: For lengths greater than 199, contact Corning Customer care at 00800 2676 4641 or cc.emea@corning.com.

9 Defines unit of measure.

M = Metres

10 Select cable colour.

BL = Blue	RD = Red
OR = Orange	BK = Black
GR = Green	YL = Yellow
BR = Brown	VT = Violet
SL = Slate	RS = Rose
WH = White	AQ = Aqua

When choosing a standard connector colour on the first or second end (digit 6&7) you must choose 'Z' for connector colour.

Select connector based on the adapter type used at the patch panel and the electronic interface connector.

Connector and adapter must be compatible for a correct connection.

Always use the lowest code first when constructing part numbers.

If simplex connectors are desired, the duplex clip can be removed.



[Back to Table of Contents](#)

Pre-terminated Solutions

LC Lockable Uniboot Jumpers

<input type="text"/>	<input type="text"/>	<input type="text"/>	<input type="text"/>	0	2	<input type="text"/>	D	<input type="text"/>	<input type="text"/>	<input type="text"/>	<input type="text"/>	2	0	<input type="text"/>	<input type="text"/>	<input type="text"/>	<input type="text"/>
1	2	3	4					5	6								

1 Select connector one type.

U9 = Multimode LC Uniboot (OM3/OM4)
U8 = Single-mode LC UPC Uniboot (OS2)

2 Select connector two type.

U9 = Multimode LC Uniboot (OM3/OM4)
U8 = Single-mode LC UPC Uniboot (OS2)

3 Select fibre type.

T = 50 µm multimode (OM3)
Q = 50 µm multimode (OM4)
G = Single-mode Ultra (OS2)

4 Select flame rate.

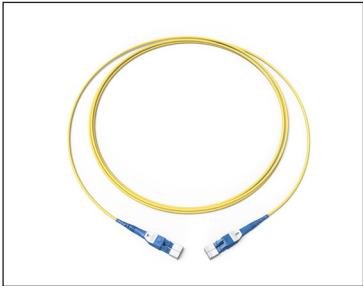
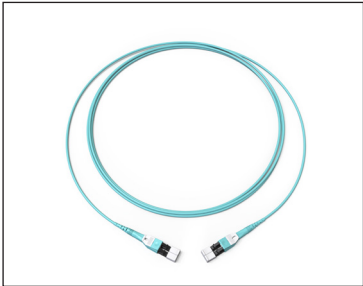
NB20 = 2 mm LSZH™, CPR B2ca
NZ20 = 2 mm LSZH, CPR Dca
NZ16 = 1.6 mm LSZH, CPR Dca⁶

5 Select length.

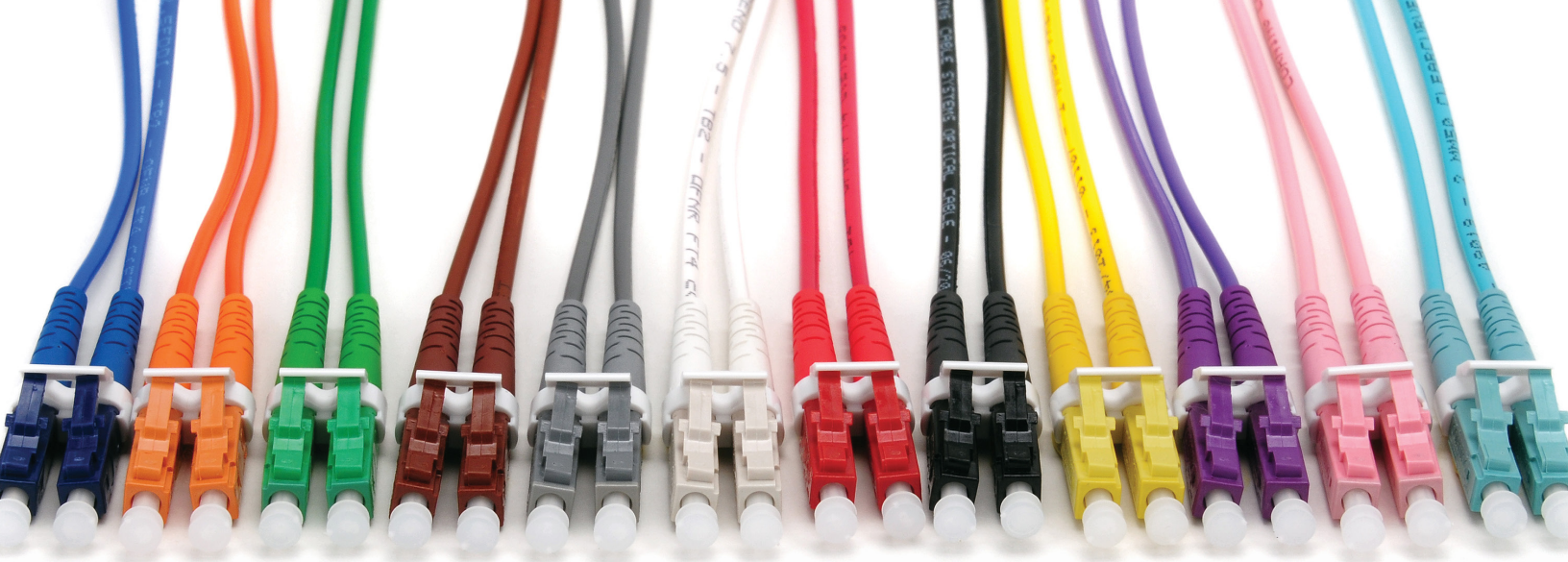
001-250 (tip-to-tip)

6 Select unit of measure.

F = Feet
M = Metres



[Back to Table of Contents](#)



Field-Terminated Non-Keyed Solutions

We offer network security for any organization looking to mitigate privacy or security concerns. Giving the user 12 colour-coded options, the LC solution provides added flexibility and easy network identification.

[Back to Table of Contents](#)

Field-Terminated Non-Keyed Solutions

Cables



1 Select fibre count.

Standard offerings:
002 006 012 024
004 008 018

2 Select fibre code.

K = 62.5 µm multimode (OM1)
T = 50 µm multimode
(OM2/OM3/OM4/OM4+)
E = Single-mode (OS2)
Corning® SMF-28e+® fibre
Z = Single-mode (OS2)
Corning® SMF-28® Ultra fibre

3 Defines cable type.

8 = MIC® cable (standard)

4 Defines outer jacket.

1 = Riser (MIC)
8 = Plenum (MIC)

5 Defines fibre placement.

3 = Standard

6 Select length markings.

5 = Markings in ft with coloured
jacket (fibre count < 12)
6 = Markings in m with coloured
jacket (fibre count < 12)
7 = Markings in ft with coloured
jacket (fibre count ≥ 12)
8 = Markings in m with coloured
jacket (fibre count ≥ 12)

7 Defines tensile strength.

1 = See specifications

8 Select performance option code.

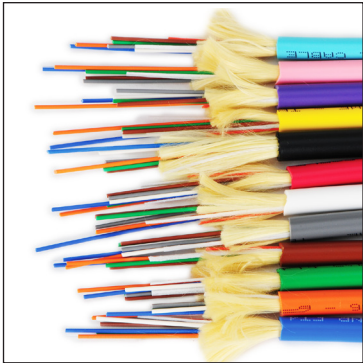
30 = 62.5 µm multimode (OM1)
31 = 50 µm multimode (OM2)
80 = 50 µm multimode (OM3)
90 = 50 µm multimode (OM4)
91 = 50 µm multimode (OM4+)
31 = Single-mode (OS2)
(Maximum attenuation
0.65/0.65/0.5 dB/km)

9 Defines cable type.

- = MIC cable (standard)

10 Select special manufacturing and colour code.*

Please see below for selections.



*Colour Codes for Selection 10

Non-Armored

AQ = Aqua	BR = Brown	GR = Green	BK = Black	OR = Orange	RS = Rose
RD = Red	SL = Slate	BL = Blue	VI = Violet	WH = White	YL = Yellow

Interlocking Armored

AA = Aqua	AB = Brown	AG = Green	AK = Black	AO = Orange	AP = Rose
AR = Red	AS = Slate	AU = Blue	AV = Violet	AW = White	AY = Yellow

[Back to Table of Contents](#)

Field-Terminated Non-Keyed Solutions

UniCam® Connectors

LC Connectors

95 - -

1

2

- 1

Select fibre type.

000 = 62.5 µm

050 = 50 µm

200 = 8.3 µm (OS2)
- 2

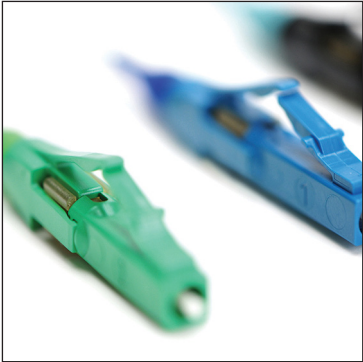
Select connector type.

99 = LC

99-X = LC (OM3/OM4)

94 = LC APC

Note: Order UniCam® plus coloured boots for non-keyed UniCam connectors.



LC Connector Boots

95 - 400 - 11 - BP -

1

2

3

- 1

Defines connector type.

11 = LC connector
- 2

Select jacket/fibre size.

9 = 900 µm

2 = 1.6 mm/2.0 mm

3 = 3.0 mm
- 3

Select boot colour.

N = Blue

C = Slate

R = Red

B = Black

Y = Yellow

A = Aqua

G = Green

W = White

Note: Each package contains 100 boots

[Back to Table of Contents](#)

Field-Terminated Non-Keyed Solutions

Closet Connector Housing (CCH) | LC Adapter Panels

Non-Shuttered

CCH - CP

1

-

2

- 1

Select fibre count.

06 = 6-fibre (three duplex adapters)

08 = 8-fibre (four duplex adapters)

12 = 12-fibre (six duplex adapters)

16 = 16-fibre (eight duplex adapters)

24 = 24-fibre (12 duplex adapters)
- 2

Select LC adapter colour.

A9 = Blue

BK = Orange

BH= Green

BN = Brown

BM = Slate

BP= White

BE = Red

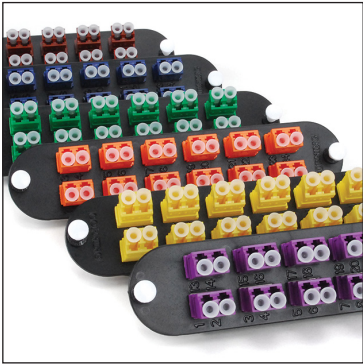
BF = Black

BG = Yellow

BJ = Violet

BL = Rose

E4 = Aqua



Shuttered

CCH - CP

1

-

2

- 1

Select fibre count.

06 = 6-fibre (three duplex adapters)

08 = 8-fibre (four duplex adapters)

12 = 12-fibre (six duplex adapters)

16 = 16-fibre (eight duplex adapters)

24 = 24-fibre (12 duplex adapters)
- 2

Select LC adapter colour.

AE = Blue

DH = Orange

AF = Green

DE = Brown

DF = Slate

DG = White

DC = Red

AC = Black

DD = Yellow

DJ = Violet

DK = Rose

AD = Aqua



[Back to Table of Contents](#)

Field-Terminated Non-Keyed Solutions

EDGE™ Solutions | Shuttered LC Splice Cassettes

EDGE - CS12 - - P00 Q E

1

2

3

4

- 1

Fibre count.

12 = 12-fibre
- 2

Select LC adapter colour.

AE = Blue

DC = Red

DH = Orange

AC = Black

AF = Green

DD = Yellow

DE = Brown

DJ = Violet

DF = Slate

DK = Rose

DG = White

AD = Aqua

- 3

Fibre type.

T = 50 µm multimode (OM3)

Q = 50 µm multimode (OM4)

R = Single-mode Corning® SMF 28e+® (OS2)
- 4

Splicing type.

E = Single-fibre splicing



Field-Terminated Non-Keyed Solutions

Closet Connector Housing (CCH) | Shuttered Pigtailed LC Adapter Panels

CCH - - - P03

1

2

3

4

5

1 Select module or panel.

RM = Module
CP = Panel

2 Select fibre count.

06 = 6-fibre
08 = 8-fibre
12 = 12-fibre
16 = 16-fibre
24 = 24-fibre

3 Select LC adapter style/colour.

Non-Shuttered LC Adapters
A9 = Blue BG = Yellow
BK = Orange BJ = Violet
BH = Green BL = Rose
BN = Brown
BM = Slate
BP = White

Shuttered LC Adapters
AE = Blue DC = Red
DH = Orange AC = Black
AF = Green DD = Yellow
DE = Brown DJ = Violet
DF = Slate DK = Rose
DG = White AD = Aqua

4 Select fibre type.

K = 62.5 µm multimode (OM1)
C = 50 µm multimode (OM2)
S = 50 µm multimode (OM4)
R = Single-mode Corning®
SMF 28e+® (OS2)

5 Select cable type.

H = MIC® cable subunit
(standard fibre cable option)
J = Ribbon fibre



[Back to Table of Contents](#)

Field-Terminated Non-Keyed Solutions

Closet Connector Housing (CCH) | LC Pigtailed Splice Cassettes

CCH - CS - - P00

1 **2** **3** **4**

1 Select fibre count.

06 = 6-fibre
08 = 8-fibre
12 = 12-fibre
16 = 16-fibre
24 = 24-fibre

2 Select LC colour and adapter type.

Non-shuttered LC adapters

A9 = Blue	BE = Red
BK = Orange	BF = Black
BH = Green	BG = Yellow
BN = Brown	BJ = Violet
BM = Slate	BL = Rose
BP = White	E4 = Aqua

Shuttered LC adapters

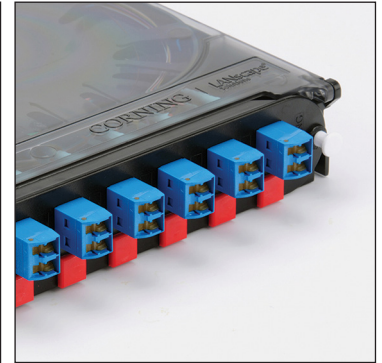
AE = Blue	DC = Red
DH = Orange	AC = Black
AF = Green	DD = Yellow
DE = Brown	DJ = Violet
DF = Slate	DK = Rose
DG = White	AD = Aqua

3 Select fibre type.

K = 62.5 µm multimode (OM1)
B = 50 µm multimode (OM2)
T = 50 µm multimode (OM3)
Q = 50 µm multimode (OM4)
R = Single-mode Ultra (OS2)

4 Select splicing type.

E = Single-fibre splicing
J = Ribbon splicing (only for fibre counts of 12 or 24)



[Back to Table of Contents](#)

Field-Terminated Non-Keyed Solutions

Wall-Plate Outlets (WLL) Single-Gang | Non-Shuttered, Loaded LC Adapters

WLL A

Port

1

2

3

4

5

6

-

1

2

- 1

Select number of ports and orientation.
- A = 1, straight

M = 1, angled

B = 2, straight

N = 2, angled

C = 3, straight

P = 4, angled

D = 4, straight

E = 6, straight

- 2

Select colour for each port.
- A9 = Blue

BE = Red

BK = Orange

BF = Black

BH = Green

BG = Yellow

BN = Brown

BJ = Violet

BM = Slate

BL = Rose

BP = White

E4 = Aqua



Field-Terminated Non-Keyed Solutions

Adapter Compatibility Matrix

Adapter Type	Wall-Plate Outlets (WLL)	Closet Connector Housing (CCH) LC Adapter Panels
Keystone with Adapter 	Compatible	Not Compatible
Adapters 	Not Compatible	Compatible

Field-Terminated Non-Keyed Solutions

Wall-Plate Outlets (WLL)

Single-Gang Wall-Plate – White

WLL - PL - A ☐

1

1 Select number of ports and orientation.

- A = 1, straight M = 1, angled
- B = 2, straight N = 2, angled
- C = 3, straight P = 4, angled
- D = 4, straight
- E = 6, straight

Note: Individual (non-loaded) wall-plates ship with blanks for half of the available ports, e.g., a four-port wall-plate will ship with two blanks.



Note: Order keystone adapters separately. Refer to Adapter Compatibility Matrix on page 49 for compatibility guidance.

Note: Adapters not included.

Double-Gang Wall-Plate – White

WLL - PL - B ☐

1

1 Select number of ports and orientation.

- G = 12, straight Q = 8, angled

Field-Terminated Non-Keyed Solutions

Wall-Plate Outlets (WLL) | Non-Shuttered LC Keystone Adapters

WLL - KS -

1

- 1 Select LC adapter colour.
- A9 = Blue

BE = Red

BK = Orange

BF = Black

BH = Green

BG = Yellow

BN = Brown

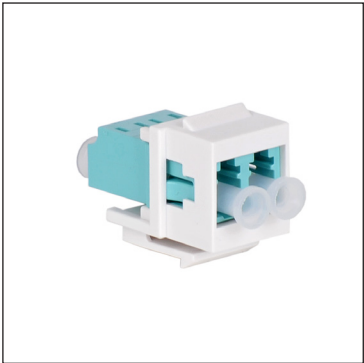
BJ = Violet

BM = Slate

BL = Rose

BP = White

E4 = Aqua
- Note: Refer to Adapter Compatibility Matrix on page 49 for compatibility guidance.



Field-Terminated Non-Keyed Solutions

Non-Shuttered LC Duplex Adapters

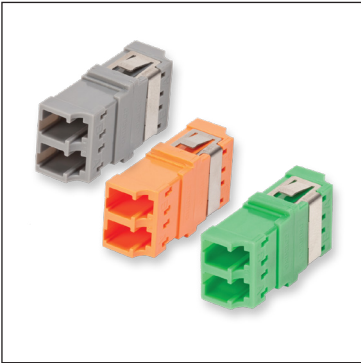
ADP - DLC0 - CC ☐ RF - CLS

1

1 Select LC adapter colour.

- | | |
|------------|------------|
| N = Blue | R = Red |
| E = Orange | B = Black |
| G = Green | Y = Yellow |
| K = Brown | V = Violet |
| S = Slate | P = Rose |
| W = White | A = Aqua |

Note: These adapters are not compatible with WLL wall-plates.



Note: Refer to Adapter Compatibility Matrix on page 49 for compatibility guidance.

[Back to Table of Contents](#)


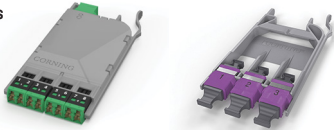
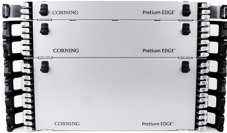







Additional Products

Pair your optical pre-terminated and field-terminated connectivity solutions with our broad range of hardware options to ensure maximum security, flexibility, and manageability.

[Back to Table of Contents](#)

Hardware Solutions




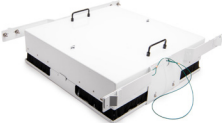






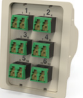
Rack-Mountable Hardware Solutions		
Hardware Type	Part Numbers	Secure Solution Required
EDGE8® Hardware 	EDGE8-01U	EDGE8 Modules and Panels 
	EDGE8-01U-SP	
	EDGE8-02U	
	EDGE8-04U	
EDGE™ Hardware 	EDGE-01U	EDGE Modules and Panels 
	EDGE-01U-SP	
	EDGE-02U	
	EDGE-04U	
Closet Connector Housing (CCH) 	CCH-01U	CCH Panels and Pigtailed Cassettes 
	CCH-02U	
	CCH-03U	
	CCH-04U	
Pretium™ Connector Housing (PCH) 	PCH-01U	Plug & Play™ Modules and Integrated Trunk Modules 
	PCH-02U	
	PCH-04U	

[Back to Table of Contents](#)

Hardware Solutions

Wall-Mountable Hardware Solutions		
Hardware Type	Part Numbers	Secure Solution Required
Wall-Mountable Closet Housing (WCH) 	WCH-02P	CCH Panels and Pigtailed Cassettes 
	WCH-04P	
	WCH-06P	
Single-Cassette Housing (SCH) 	SCH-01C	CCH Pigtailed Cassettes 
Single-Panel Housing (SPH) 	SPH-01P	CCH Panels 
Single-Module Housing (SMH) 	SMH-01M	CCH Modules 

Hardware Solutions

Ceiling/Floor/Wall-Mountable Hardware Solutions		
Hardware Type	Part Numbers	Secure Solution Required
Fibre Zone Box (FZB) 	FZB-04U	CCH Panels and Plug & Play™ Modules  
	FZB-04P	
	EDGE-FZB-04U	
Sub Floor Box (SFB) 	SFB-03U	EDGE™ Modules and Panels  
Fibre-to-the-Desk Hardware Solutions		
Hardware Type	Part Numbers	Secure Solution Required
EDGE8® and EDGE Single-Module Housing 	EDGE8-SMH	EDGE8 Modules See page 24
	EDGE-SMH	EDGE Modules See page 36
EDGE Single-Module Splice Housing 	EDGE-SMH-SPLC	See pages 9 and 45
Wall-Plate Outlet (WLL) 	WLL-XX	See keyed and non-keyed options in field-terminated sections. See pages 12, 14, 48 and 50
Workstation Multimedia Outlet (WMO) 	WMO-85	See keyed and non-keyed options in field-terminated sections. See pages 43 and 87
Fibre-to-the-Desk Module (MAM) 	MAM-XM-12-XX X-XX X X-X	See keyed and non-keyed options in field-terminated sections. <i>Floor box and wall gang versions available</i> See pages 28 and 72

[Back to Table of Contents](#)



Corning® Everon® Copper Datacom Solutions






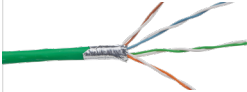


Corning offers a comprehensive range of products for all copper cable requirements.

Within this portfolio, the Keystone footprint and its KS500S shielded system are the most adequate for your secure environment, providing an easy-to-use solution for deploying high-speed connections throughout a building.

[Back to Table of Contents](#)

Everon® Copper Datacom



Keystone Footprint KS500S Shielded Cat.6_A/Class EA, UK

Channel				
5 Patch Cord	3 Panel	2 Jack	1 Cable	2 Jack
Permanent Link				
4 Faceplate				
5 Patch Cord				
1 Cables	2 Jacks	3 Panels	4 Faceplates and Outlets	5 Patch Cords
				
CCXEDB-DB047-C001-L7 Cat.6 _A SFTP LSZH™, 4-Pairs, 23 AWG, B2ca, blue, 1,000 m	KAXBSM-00104-C001-B6 RJ45 Cat.6 _A STP Jack, silver (bag of 6), KS500S	KAXCSV-02408-C001 Black Patch Panel, 24 ports, 1U	UAXCSE-V0101-C020-BP 38x25 mm Inclined LJ6C Adapter	CCAAGB-G1002-A005-C0 Cat.6 _A SFTP LSZH, grey, 0.5 m
CCXEDB-DC047-C001-L6 Cat.6 _A SFTP LSZH, 4-Pairs, 23 AWG, Cca, blue, 500 m	KAXBSM-00104-C001-BP RJ45 Cat.6 _A STP Jack, silver (bulk pack of 24), KS500S	KAXCSV-02400-C001 Silver Patch Panel, 24 ports, 1U	CAXCSE-00101-C021-BP 86x86 mm Single LJ6C Outlet - 1 Adapter	CCAAGB-G1002-A010-C0 Cat.6 _A SFTP LSZH, grey, 1 m
CCXEDA-DC047-C001-L6 Cat.6 _A FFTP LSZH, 4-Pairs, 23 AWG, Cca, blue, 500 m		KAXCSV-02401-C001 White Patch Panel, 24 ports, 1U	CAXCSE-00201-C021-BP 86x86 mm Single LJ6C Outlet - 2 Adapters	CCAAGB-G1002-A020-C0 Cat.6 _A SFTP LSZH, grey, 2 m
			CAXCSE-00401-C021-BP 146x86 mm Double LJ6C Outlet - 4 Adapters	CCAAGB-G1002-A030-C0 Cat.6 _A SFTP LSZH, grey, 3 m
UU009175728 Cat.6 _A FUTP LSZH, 4-Pairs, 24 AWG, B2ca, green, 500 m		UU009535251E Silver High-Density Patch Panel, 48 ports, 1U		CCAAGB-G1002-A050-C0 Cat.6 _A SFTP LSZH, grey, 5 m
UU009175736 Cat.6 _A FUTP LSZH, 4-Pairs, 24 AWG, Cca, green, 500 m			UAXCSE-V0101-C010-BP 50x25mm Inclined EUROMOD Adapter	CCAAGB-G1002-A100-C0 Cat.6 _A SFTP LSZH, grey, 10 m
			CAXCSE-00201-C011-BP 86x86 mm EUROMOD Outlet - 2 Adapters	Additional lengths and colours are available. Please consult your local Corning representative or alternatively Corning Customer Care at 00800-2676-4641 or email cc.emea@corning.com.
			CAXCSE-00401-C011-BP 146x86mm EUROMOD Outlet - 4 Adapters	
			CAXCSE-00001-C001 86x86 mm Surface mounting box. For use with LJ6C and EUROMOD Outlets	

Additional faceplates available (see next page).

[Back to Table of Contents](#)

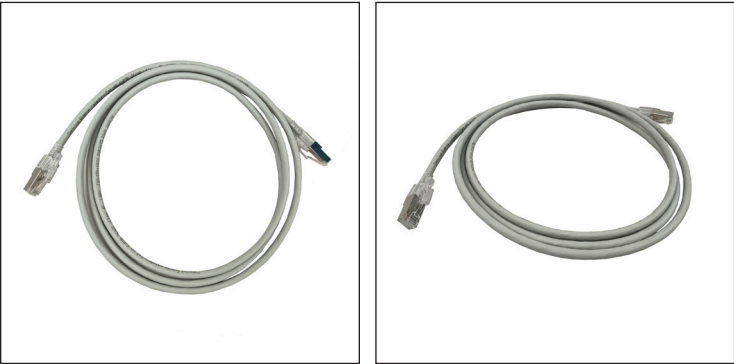
Additional Faceplates

4Faceplates for Germany	4Faceplates for France
	
<p>UAXCSE-S0101-C040-BP Inclined adapter 80x80 mm, for 1 RJ45 module, white</p> <p>UAXCSE-S0201-C040-BP Inclined adapter 80x80 mm, for 2 RJ45 modules, white</p> <p>CAXCSE-00101-C041-BP 80x80 mm front panel, for 1 faceplate 50 x 50 mm, white</p> <p>CAXCSE-00001-C040 Mounting housing for 80 x 80 mm faceplate, white</p>	<p>UAXCSE-V0101-C031-BP Inclined adapter for one module, 22,5x45 mm</p> <p>UAXCSE-V0101-C030-BP Inclined adapter for one module, 45x45 mm</p> <p>UAXCSE-V0201-C030-BP Inclined adapter for 2 modules, 45x45 mm</p> <p>CAXCSE-00101-C031-BP Front panel for 1 faceplate, 45x45 mm.</p> <p>CAXCSE-00101-C030-BP Shutter, 22,5x45 mm</p>

[Back to Table of Contents](#)

Everon[®] Copper Datacom Patch Cord

The Everon Copper Datacom patch cord locks system can lock the patch cable into a port or prevent someone from unplugging the cable. It can help protect your terminal outlet or patchpanel with a security lock. The plug locks are secured with fixing system that require a special key to unlock. The application-neutral category 6A patch cords have four individual foil-shielded pairs (PIMF) and an additional braid shield (S/FTP). They are assembled with a shielded RJ45 connectors on each end. The zero halogen patch cords (LSZH™) are non-corrosive according to IEC 60754-2 (FRNC), low smoke according to IEC 61034 and flame retardant according to IEC 60332-1. Everon Copper Datacom CCAAGB patch cords provide additional latch protection. They are available in various lengths and colours.

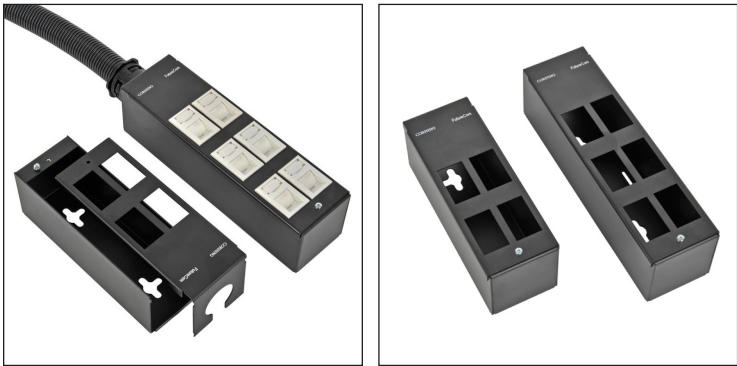


Part Number	Description
CAXCSN-00000-C005	Everon Copper Datacom patch cord locks system, Lock/unlock key, 10 pieces
CAXCSN-00000-C006	Everon Copper Datacom patch cord locks system, Lock/unlock port Red, 24 pieces
CCAAGB-G1015-A005-C0	Everon Copper Datacom patch cord locks system, Cat.6A S/FTP Patchcord, AWG 26, gray, 0.5 m
CCAAGB-G1015-A010-C0	Everon Copper Datacom patch cord locks system, Cat.6A S/FTP Patchcord, AWG 26, gray, 1 m
CCAAGB-G1015-A020-C0	Everon Copper Datacom patch cord locks system, Cat.6A S/FTP Patchcord, AWG 26, gray, 2 m
CCAAGB-G1015-A030-C0	Everon Copper Datacom patch cord locks system, Cat.6A S/FTP Patchcord, AWG 26, gray, 3 m
CCAAGB-G1015-A050-C0	Everon Copper Datacom patch cord locks system, Cat.6A S/FTP Patchcord, AWG 26, gray, 5 m
CCAAGB-G1015-A100-C0	Everon Copper Datacom patch cord locks system, Cat.6A S/FTP Patchcord, AWG 26, gray, 10 m

[Back to Table of Contents](#)

Bloc Port

Grid Outlet Port (GOP) Boxes Protective Box for Module Housings



Part Number	Description
WAXWAB-00408-C001	Protective tank/ GOP box for 4 module housings 38x25 inclined, housing and cover black
WAXWAB-00608-C001	Protective tank/ GOP box for 6 module housings 38x25 inclined, housing and cover black
WAXWSE-00000-C001	Clip for installation of GOP box, Pack 10 pieces

[Back to Table of Contents](#)

Everon® Copper Datacom Patch Cord Locks System

The Everon Copper Datacom patch cord locks system can lock the patch cable into a port or prevent someone from unplugging the cable. It can help protect your terminal outlet or patchpanel with a security lock. The plug locks are secured with fixing system that require a special key to unlock. The application-neutral category 6A patch cords have four individual foil-shielded pairs (PiMF) and an additional braid shield (S/FTP). They are assembled with a shielded RJ45 connectors on each end. The zero halogen patch cords (LSZH™) are non-corrosive according to IEC 60754-2 (FRNC), low smoke according to IEC 61034 and flame retardant according to IEC 60332-1. Everon Copper Datacom CCAAGB patch cords provide additional latch protection. They are available in various lengths and colours.



Part Number	Description
CAXCSN-00000-C005	Everon Copper Datacom patch cord locks system, Lock/unlock key, 10 pieces
CAXCSN-00000-C006	Everon Copper Datacom patch cord locks system, Lock/unlock port Red, 24 pieces
CCAAGB-G1015-A005-C0	Everon Copper Datacom patch cord locks system, Cat.6A S/FTP Patchcord, AWG 26, grey, 0.5 m
CCAAGB-G1015-A010-C0	Everon Copper Datacom patch cord locks system, Cat.6A S/FTP Patchcord, AWG 26, grey, 1 m
CCAAGB-G1015-A020-C0	Everon Copper Datacom patch cord locks system, Cat.6A S/FTP Patchcord, AWG 26, grey, 2 m
CCAAGB-G1015-A030-C0	Everon Copper Datacom patch cord locks system, Cat.6A S/FTP Patchcord, AWG 26, grey, 3 m
CCAAGB-G1015-A050-C0	Everon Copper Datacom patch cord locks system, Cat.6A S/FTP Patchcord, AWG 26, grey, 5 m
CCAAGB-G1015-A100-C0	Everon Copper Datacom patch cord locks system, Cat.6A S/FTP Patchcord, AWG 26, grey, 10 m

[Back to Table of Contents](#)

Tools and Resources

Programmes and Services

www.corning.com/emea/en/products/communication-networks/loyalty-programs.html

Online Product Catalogue

catalog.corning.com/opcomm

Online Library

<http://www.corning.com/opcomm/resourcelibrary>

Online Drawings Resource Centre

<http://www.corning.com/emea/en/product-drawing>

Online Certificates Centre

<http://www.corning.com/emea/en/certificates>

CPR Centre

<http://www.corning.com/opcomm/cpr>

See the Light® Seminars and Webinars

<http://www.corning.com/emea/training>

On-Demand Installation Videos

<http://www.corning.com/opcomm/youtube>

Events

<http://www.corning.com/emea/en/products/communication-networks/news-events/news-releases.html>

Newsletter Archive

<http://www.corning.com/emea/en/products/communication-networks/news-events/newsletters.html>

Newsletter Subscription

<http://www.corning.com/emea/en/products/communication-networks/news-events/subscription-center.html>

[Back to Table of Contents](#)

Notes

CORNING

Corning Optical Communications GmbH & Co. KG • Leipziger Strasse 121 • 10117 Berlin, GERMANY
+00 800 2676 4641 • FAX: +49 30 5303 2335 • www.corning.com/opcomm/emea

Corning Optical Communications reserves the right to improve, enhance, and modify the features and specifications of Corning Optical Communications products without prior notification. A complete listing of the trademarks of Corning Optical Communications is available at www.corning.com/opcomm/trademarks. All other trademarks are the properties of their respective owners. Corning Optical Communications is ISO 9001 certified. © 2020, 2025 Corning Optical Communications. All rights reserved. LAN-1852-BEN / June 2025