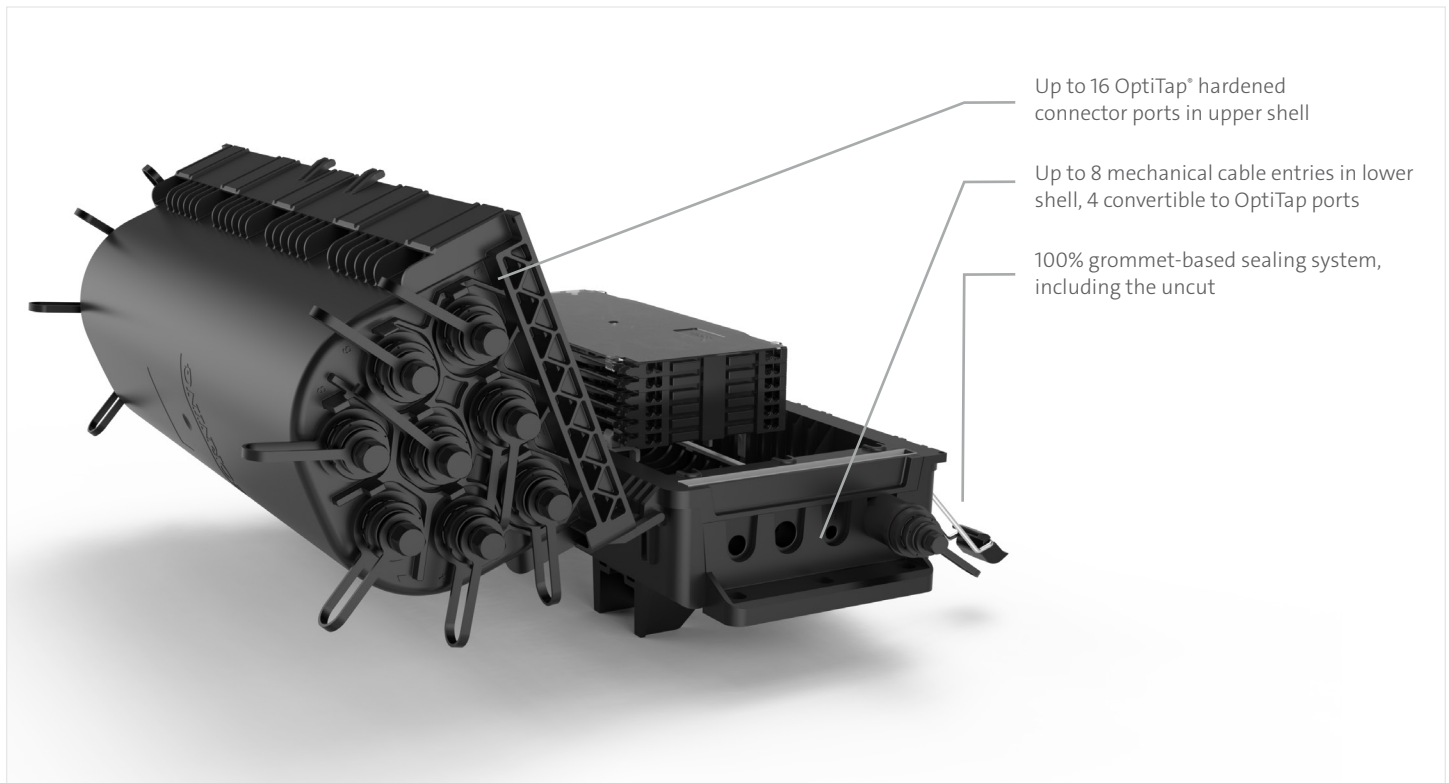


The UCAO MS terminal, leader in the preconnectorized FTTH networks in Latin America, with fully mechanical cable entries, gains new versions: in addition to the version with OptiTap® hardened connectors, now it is also available with SC APC adapters for internal drop connection or with no connectors in the fiber splice version. With the new versions, the UCAO MS terminal is ready for multiple applications in FTTH networks, from splicing the access network, field-terminated drop cables, or preconnectorized networks.

This innovative terminal provides sealed environmental protection and fast, easy incremental connection of subscriber drop cables while increasing deployment velocity.

UCAO MS Terminal can be installed above grade: pole, strand, façade or below grade: manhole, handhole, or direct buried. The terminal can also serve as a splice terminal, where the distribution cables of many fibers can be distributed to branch cables or spliced to other terminal stubs. Optical splitters can also be housed inside this terminal, allowing installation on the first and second levels of the FTTH network splitter, serving as a subscriber terminal or as a distribution terminal.

Terminal UCAO MS



Features	Benefits
100% grommet-based sealing system, including the uncut	Fast, clean, error-proof installation
IP68	Suitable for aerial and underground installation
Splitter area now separate from the splice tray stack	Increased protection against damage and failures
Up to 20 OptiTap hardened connector ports	Allows subscriber connection without opening the closure
Up to eight mechanical cable entries	Enables multiple branching cable options

Design and capacity	
Splice capacity	144 (with 6 splice trays)
Mechanical cable entries capacity	8
Splice trays capacity	6
OptiTap hardened connectors capacity	20
SC APC adapters capacity	16

Mechanical Features	
Weight	3.9 kg

UCAO MS OptiTap® Terminal



UCAO MS OptiTap® is the version of the UCAO family designed for preconnectorized outside plant fiber access networks.

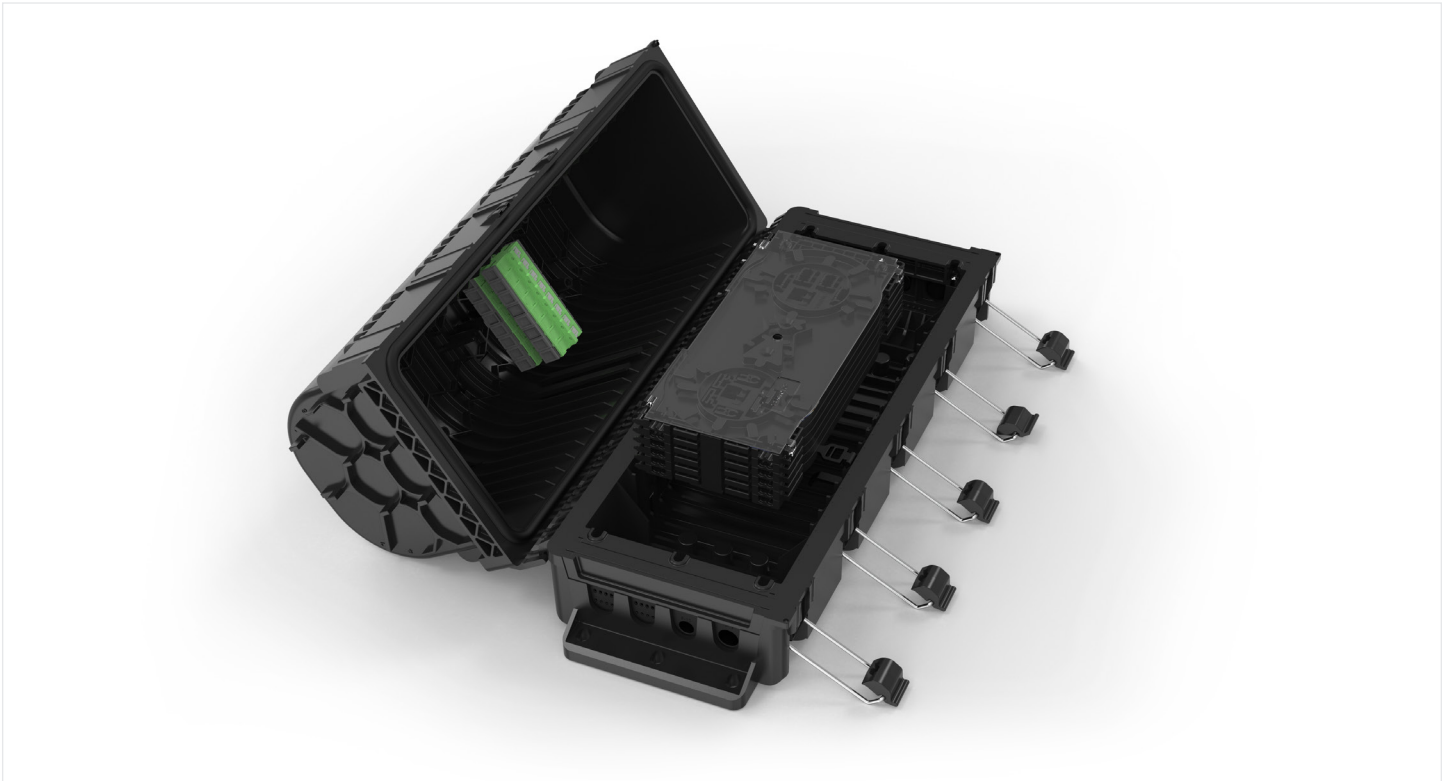
With eight mechanical cable entries, it allows for quick and clean cable installation. Individual connections to the subscriber are made using OptiTap ports, allowing connection without opening the terminal. Up to 20 hardened connector ports can be accommodated (eight on each side of the cover plus 4 at the base).

The terminal consists of two separate parts that are sealed by a silicone O-ring fixed on the upper shell, so it is unnecessary to remove them during the installation of the cables in the base. All drop ports are positioned on the upper shell, while the main and branch cable entry ports are located in the bottom shell. The fiber management uses up to six splice trays that can be accessed individually; Each tray can accommodate up to 24 splices.

Ordering Information

UCAO MS OptiTap	
Part Number	Description
UM-8ERBROERBO-2-1108-A-BR	UCAO MS, 8 OptiTap ports, 1 splitter 1x8
UM-8ERBR8ERBO-3-2108-C-BR	UCAO MS, 8 OptiTap ports, 2 splitters 1x8
UM-8ERBROERBO-2-PA08-A-BR	UCAO MS, 8 OptiTap ports, 8 SC APC pigtails, no splitter
UM-8ERBR8ERBO-3-PA16-A-BR	UCAO MS, 16 OptiTap ports, 16 pigtails SC APC, no splitter
UM-9HRBR0HRBR-2-1108-U-BR	UCAO MS, 9 OptiTap ports, 1 splitter 1x8 + 1 pigtail
UM-AHRBR0HRBR-2-1108-U-BR	UCAO MS, 10 OptiTap ports, 1 splitter 1x8 + 2 pigtails
UM-9HRBR8HRBR-3-2108-U-BR	UCAO MS, 17 OptiTap ports, 2 splitter 1x8 + 1 pigtail
UM-9HRBR8HRBR-3-1116-U-BR	UCAO MS, 17 OptiTap ports, 1 splitter 1x16 + 1 pigtail

UCAO MS SC APC Terminal



UCAO MS SC APC terminal is the version of the UCAO family equipped with SC to APC adapters and optical splitters, designed for outside plant fiber access networks with field-terminated drop cables.

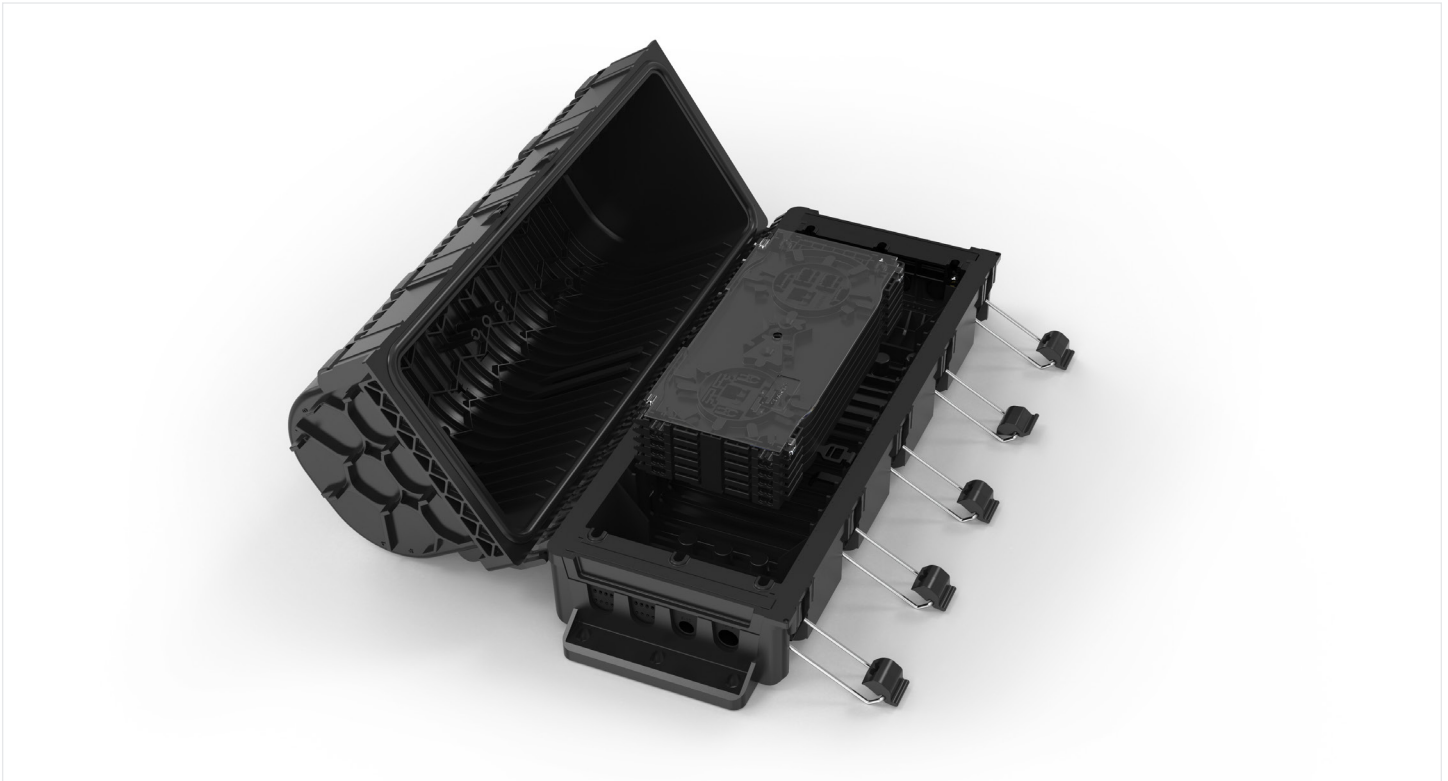
With eight mechanical cable entries, it allows for quick and clean cable installation. Individual connections to the subscriber are made using internally located SC to APC adapter ports (up to 16 can be accommodated).

The terminal consists of two articulated parts that are sealed by a silicone O-ring fixed on the upper shell, so it is unnecessary to remove them during the installation of the cables in the base. All drop ports are positioned on the upper shell, while the main and branch cable entry ports are located in the bottom shell. The fiber management uses up to six splice trays that can be accessed individually; Each tray can accommodate up to 24 splices.

Ordering Information

UCAO MS SC APC	
Part Number	Description
UM-0ERBROFRFR-6-08SC-BR	UCAO MS, 8 SC APC adapters, no splitter
UM-0ERBROFRFR-6-08SP-BR	UCAO MS, 8 SC APC adapters, 1 splitter 1x8
UM-0ERBROFRFR-6-16SC-BR	UCAO MS, 16 SC APC adapters, 1 splitter 1x16
UM-0ERBROFRFR-6-16SP-BR	UCAO MS, 16 SC APC adapters, 2 splitters 1x8

UCAO MS Splice Closure



The UCAO Splice Closure with mechanical sealing is designed for use in outside plant fiber access networks. With eight mechanical cable entries, it allows for quick and clean cable installation.

The closure consists of two articulated parts that are sealed by a silicone O-ring fixed on the upper shell, so it is unnecessary to remove them during the installation of the cables in the base. All the drop ports, the main and branch cable entries are located in the bottom shell.

The fiber management uses up to six splice trays, that can be accessed individually. Each tray can accommodate up to 24 splices.

Ordering Information

UCAO MS Splice	
Part Number	Description
UM-0ERBROERBR-6-0000-BR	UCAO MS Splice, with 6 splice trays, up to 144 splices

UCAO MS Accessories



Ordering Information

Mounting Bracket	
Part Number	Description
KIT-MOUNT-UCAO-BPEO-MDT	Universal Bracket, UCAO, BPEO, MDT
UCAO-MS-OPT-EXP	OptiTap® Expansion Kit for UCAO MS

CORNING

Corning Optical Communications LLC • 4200 Corning Place • Charlotte, NC 28216 USA
800-743-2675 • FAX: 828-325-5060 • International: +1-828-901-5000 • www.corning.com/opcomm

Corning Optical Communications reserves the right to improve, enhance, and modify the features and specifications of Corning Optical Communications products without prior notification. A complete listing of the trademarks of Corning Optical Communications is available at www.corning.com/opcomm/trademarks. All other trademarks are the properties of their respective owners. Corning Optical Communications is ISO 9001 certified. © 2021, 2022 Corning Optical Communications. All rights reserved. CRR-1643-AEN / July 2022