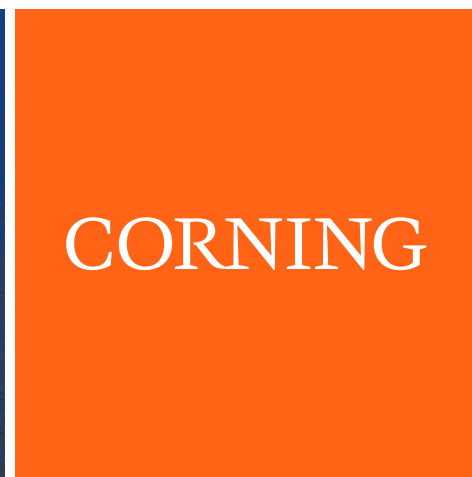
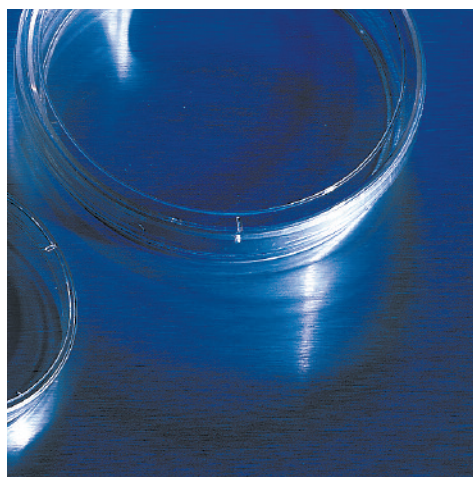
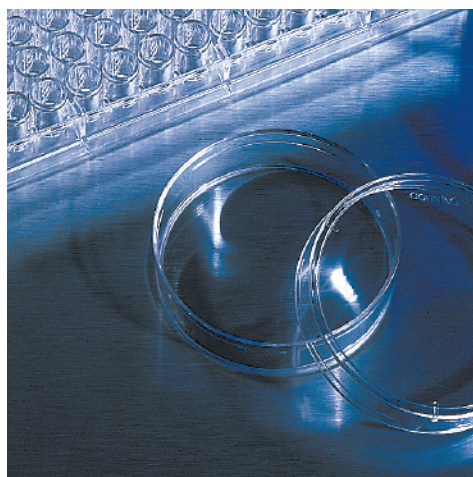
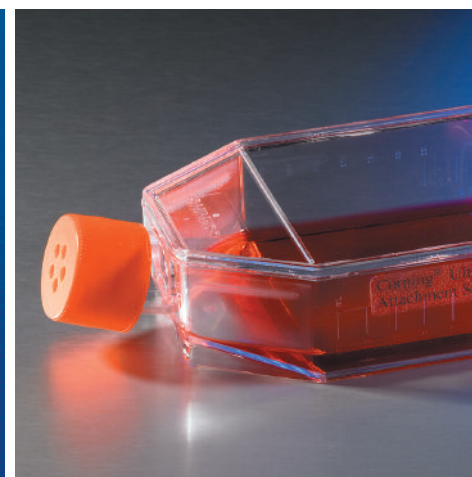
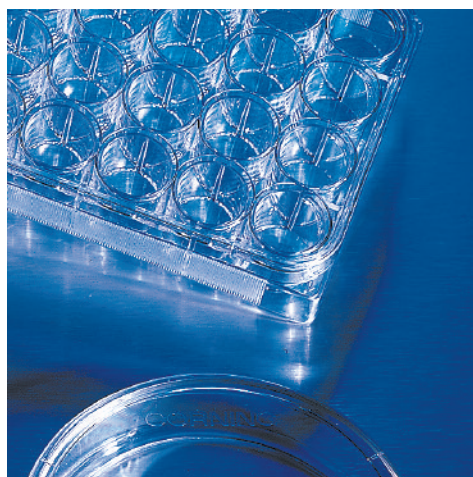
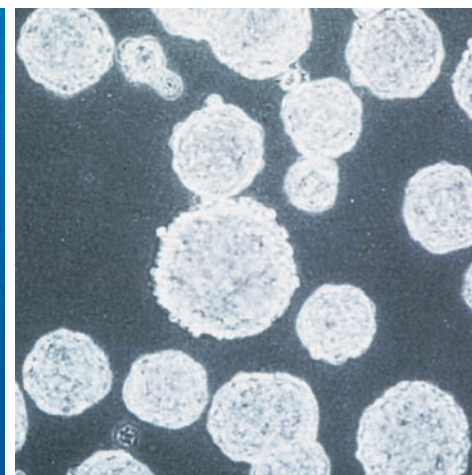


Corning® Ultra-Low Attachment Surface Bibliography: Stem Cell Applications



This document is a partial bibliography of some of the research using Corning® Ultra-Low Attachment Surface vessels for stem cell applications.

1. Abraham, S., S.D. Sheridan, L.C. Laurent, K. Albert, C. Stubban, I. Ulitsky, B. Miller, J.F. Loring, and R.R. Rao. 2010. Propagation of human embryonic and induced pluripotent stem cells in an indirect co-culture system. *Biochem Biophys Res Commun.* 393:211-6.
2. Alsarraj, J., R.C. Walker, J.D. Webster, T.R. Geiger, N.P. Crawford, R.M. Simpson, K. Ozato, and K.W. Hunter. 2011. Deletion of the proline-rich region of the murine metastasis susceptibility gene *Brd4* promotes epithelial-to-mesenchymal transition- and stem cell-like conversion. *Cancer Res.* 71:3121-31.
3. Arima, Y., N. Hayashi, H. Hayashi, M. Sasaki, K. Kai, E. Sugihara, E. Abe, A. Yoshida, S. Mikami, S. Nakamura, and H. Saya. 2011. Loss of p16 expression is associated with the stem cell characteristics of surface markers and therapeutic resistance in estrogen receptor-negative breast cancer. *Int J Cancer.* doi: 10.1002/ijc.26271.
4. Arzumanyan, A., T. Friedman, I.O. Ng, M.M. Clayton, Z. Lian, and M.A. Feitelson. 2011. Does the hepatitis B antigen HBx promote the appearance of liver cancer stem cells? *Cancer Res.* 71:3701-8.
5. Awad, O., J.T. Yustein, P. Shah, N. Gul, V. Katuri, A. O'Neill, Y. Kong, M.L. Brown, J.A. Toretsky, and D.M. Loeb. 2010. High ALDH activity identifies chemotherapy-resistant Ewing's sarcoma stem cells that retain sensitivity to EWS-FLI1 inhibition. *PLoS One.* 5:e13943.
6. Balic, M., N. Rapp, S. Stanzer, H. Lin, J. Strutz, J. Szkandera, M.G. Daidone, H. Samonigg, R.J. Cote, and N. Dandachi. 2011. Novel immunofluorescence protocol for multimarker assessment of putative disseminating breast cancer stem cells. *Appl Immunohistochem Mol Morphol.* 19:33-40.
7. Barroso-delJesus, A., G. Lucena-Aguilar, L. Sanchez, G. Ligerero, I. Gutierrez-Aranda, and P. Menendez. 2011. The Nodal inhibitor Lefty is negatively modulated by the microRNA miR-302 in human embryonic stem cells. *Faseb J.* 25:1497-508.
8. Batchelder, C.A., C.C. Lee, D.G. Matsell, M.C. Yoder, and A.F. Tarantal. 2009. Renal ontogeny in the rhesus monkey (*Macaca mulatta*) and directed differentiation of human embryonic stem cells towards kidney precursors. *Differentiation.* 78:45-56.
9. Bauwens, C.L., R. Peerani, S. Niebruegge, K.A. Woodhouse, E. Kumacheva, M. Husain, and P.W. Zandstra. 2008. Control of human embryonic stem cell colony and aggregate size heterogeneity influences differentiation trajectories. *Stem Cells.* 26:2300-10.
10. Belay, E., J. Matrai, A. Acosta-Sanchez, L. Ma, M. Quattrocchi, L. Mates, P. Sancho-Bru, M. Geraerts, B. Yan, J. Vermeesch, M.Y. Rincon, E. Samara-Kuko, Z. Ivics, C. Verfaillie, M. Sampaolesi, Z. Izsvak, T. Vandendriessche, and M.K. Chuah. 2010. Novel hyperactive transposons for genetic modification of induced pluripotent and adult stem cells: a nonviral paradigm for coaxed differentiation. *Stem Cells.* 28:1760-71.
11. Bettiol, E., L. Sartiani, L. Chicha, K.H. Krause, E. Cerbai, and M.E. Jaconi. 2007. Fetal bovine serum enables cardiac differentiation of human embryonic stem cells. *Differentiation.* 75:669-81.
12. Blacking, T.M., M. Waterfall, and D.J. Argyle. 2011. CD44 is associated with proliferation, rather than a specific cancer stem cell population, in cultured canine cancer cells. *Vet Immunol Immunopathol.* 141:46-57.
13. Boland, M.J., J.L. Hazen, K.L. Nazor, A.R. Rodriguez, W. Gifford, G. Martin, S. Kupriyanov, and K.K. Baldwin. 2009. Adult mice generated from induced pluripotent stem cells. *Nature.* 461:91-4.
14. Bonde, S., M. Pedram, R. Stultz, and N. Zavazava. 2010. Cell fusion of bone marrow cells and somatic cell reprogramming by embryonic stem cells. *Faseb J.* 24:364-73.
15. Booth, B.W., C.A. Boulanger, L.H. Anderson, L. Jimenez-Rojo, C. Brisken, and G.H. Smith. 2010. Amphiregulin mediates self-renewal in an immortal mammary epithelial cell line with stem cell characteristics. *Exp Cell Res.* 316:422-32.
16. Botchkina, G.I., E.S. Zuniga, M. Das, Y. Wang, H. Wang, S. Zhu, A.G. Savitt, R.A. Rowehl, Y. Leyfman, J. Ju, K. Shroyer, and I. Ojima. 2010. New-generation taxoid SB-T-1214 inhibits stem cell-related gene expression in 3D cancer spheroids induced by purified colon tumor-initiating cells. *Mol Cancer.* 9:192.
17. Botchkina, I.L., R.A. Rowehl, D.E. Rivadeneira, M.S. Karpeh, Jr., H. Crawford, A. Dufour, J. Ju, Y. Wang, Y. Leyfman, and G.I. Botchkina. 2009. Phenotypic subpopulations of metastatic colon cancer stem cells: genomic analysis. *Cancer Genomics Proteomics.* 6:19-29.

18. Bouffi, C., O. Thomas, C. Bony, A. Giteau, M.C. Venier-Julienne, C. Jorgensen, C. Montero-Menei, and D. Noel. 2010. The role of pharmacologically active microcarriers releasing TGF-beta3 in cartilage formation in vivo by mesenchymal stem cells. *Biomaterials*. 31:6485-93.
19. Brown, M.E., E. Rondon, D. Rajesh, A. Mack, R. Lewis, X. Feng, L.J. Zitur, R.D. Learish, and E.F. Nuwaysir. 2010. Derivation of induced pluripotent stem cells from human peripheral blood T lymphocytes. *PLoS One*. 5:e11373.
20. Byrne, J.A., H.N. Nguyen, and R.A. Reijo Pera. 2009. Enhanced generation of induced pluripotent stem cells from a subpopulation of human fibroblasts. *PLoS One*. 4:e7118.
21. Byrne, J.A., D.A. Pedersen, L.L. Clepper, M. Nelson, W.G. Sanger, S. Gokhale, D.P. Wolf, and S.M. Mitalipov. 2007. Producing primate embryonic stem cells by somatic cell nuclear transfer. *Nature*. 450:497-502.
22. Cao, H., Y. Chu, H. Zhu, J. Sun, Y. Pu, Z. Gao, C. Yang, S. Peng, Z. Dou, and J. Hua. 2011. Characterization of immortalized mesenchymal stem cells derived from foetal porcine pancreas. *Cell Prolif*. 44:19-32.
23. Cao, L., Y. Zhou, B. Zhai, J. Liao, W. Xu, R. Zhang, J. Li, Y. Zhang, L. Chen, H. Qian, M. Wu, and Z. Yin. 2011. Sphere-forming cell subpopulations with cancer stem cell properties in human hepatoma cell lines. *BMC Gastroenterol*. 11:71.
24. Chandra, V., S. G. S. Phadnis, P.D. Nair, and R.R. Bhonde. 2009. Generation of pancreatic hormone-expressing islet-like cell aggregates from murine adipose tissue-derived stem cells. *Stem Cells*. 27:1941-53.
25. Chandra, V., G. Swetha, S. Muthyala, A.K. Jaiswal, J.R. Bellare, P.D. Nair, and R.R. Bhonde. 2011. Islet-like cell aggregates generated from human adipose tissue derived stem cells ameliorate experimental diabetes in mice. *PLoS One*. 6:e20615.
26. Chang, K.H., A. Huang, R.K. Hirata, P.R. Wang, D.W. Russell, and T. Papayannopoulou. 2010. Globin phenotype of erythroid cells derived from human induced pluripotent stem cells. *Blood*. 115:2553-4.
27. Chang, K.H., A.M. Nelson, P.A. Fields, J.L. Hesson, T. Ulyanova, H. Cao, B. Nakamoto, C.B. Ware, and T. Papayannopoulou. 2008. Diverse hematopoietic potentials of five human embryonic stem cell lines. *Exp Cell Res*. 314:2930-40.
28. Charafe-Jauffret, E., C. Ginestier, F. Iovino, J. Wicinski, N. Cervera, P. Finetti, M.H. Hur, M.E. Diebel, F. Monville, J. Dutcher, M. Brown, P. Viens, L. Xerri, F. Bertucci, G. Stassi, G. Dontu, D. Birnbaum, and M.S. Wicha. 2009. Breast cancer cell lines contain functional cancer stem cells with metastatic capacity and a distinct molecular signature. *Cancer Res*. 69:1302-13.
29. Chen, A.K., X. Chen, A.B. Choo, S. Reuveny, and S.K. Oh. 2011. Critical microcarrier properties affecting the expansion of undifferentiated human embryonic stem cells. *Stem Cell Res*. 7:97-111.
30. Chen, C., Y. Wei, M. Hummel, T.K. Hoffmann, M. Gross, A.M. Kaufmann, and A.E. Albers. 2011. Evidence for epithelial-mesenchymal transition in cancer stem cells of head and neck squamous cell carcinoma. *PLoS One*. 6:e16466.
31. Chen, H.F., C.Y. Chuang, Y.K. Shieh, H.W. Chang, H.N. Ho, and H.C. Kuo. 2009. Novel autogenic feeders derived from human embryonic stem cells (hESCs) support an undifferentiated status of hESCs in xeno-free culture conditions. *Hum Reprod*. 24:1114-25.
32. Chen, M.Q., X. Xie, R. Hollis Whittington, G.T. Kovacs, J.C. Wu, and L. Giovangrandi. 2008. Cardiac differentiation of embryonic stem cells with point-source electrical stimulation. *Conf Proc IEEE Eng Med Biol Soc*. 2008:1729-32.
33. Chen, M.Q., J. Yu, R.H. Whittington, J.C. Wu, G.T. Kovacs, and L. Giovangrandi. 2009. Modeling conduction in host-graft interactions between stem cell grafts and cardiomyocytes. *Conf Proc IEEE Eng Med Biol Soc*. 2009:6014-7.
34. Chen, T., H. Bai, Y. Shao, M. Arzigian, V. Janzen, E. Attar, Y. Xie, D.T. Scadden, and Z.Z. Wang. 2007. Stromal cell-derived factor-1/CXCR4 signaling modifies the capillary-like organization of human embryonic stem cell-derived endothelium in vitro. *Stem Cells*. 25:392-401.
35. Chen, X., A. Chen, T.L. Woo, A.B. Choo, S. Reuveny, and S.K. Oh. 2010. Investigations into the metabolism of two-dimensional colony and suspended microcarrier cultures of human embryonic stem cells in serum-free media. *Stem Cells Dev*. 19:1781-92.
36. Cipak, A., L. Mrakovcic, M. Ciz, A. Lojek, B. Mihaylova, I. Goshev, M. Jaganjac, M. Cindric, S. Sitic, M. Margaritoni, G. Waeg, M. Balic, and N. Zarkovic. 2010. Growth suppression of human breast carcinoma stem cells by lipid peroxidation product 4-hydroxy-2-nonenal and hydroxyl radical-modified collagen. *Acta Biochim Pol*. 57:165-71.

37. Cociadiferro, L., V. Miceli, K.S. Kang, L.M. Polito, J.E. Trosko, and G. Carruba. 2009. Profiling cancer stem cells in androgen-responsive and refractory human prostate tumor cell lines. *Ann N Y Acad Sci.* 1155:257-62.
38. Cooke, M.E., A.A. Allon, T. Cheng, A.C. Kuo, H.T. Kim, T.P. Vail, R.S. Marcucio, R.A. Schneider, J.C. Lotz, and T. Alliston. 2011. Structured three-dimensional co-culture of mesenchymal stem cells with chondrocytes promotes chondrogenic differentiation without hypertrophy. *Osteoarthritis Cartilage.* 19:1210-8.
39. Choudhary, M., X. Zhang, P. Stojkovic, L. Hyslop, G. Anyfantis, M. Herbert, A.P. Murdoch, M. Stojkovic, and M. Lako. 2007. Putative role of hyaluronan and its related genes, HAS2 and RHAMM, in human early preimplantation embryogenesis and embryonic stem cell characterization. *Stem Cells.* 25:3045-57.
40. Cristofanilli, F. Marini, M. Andreeff, and W.A. Woodward. 2010. Mesenchymal stem cells promote mammosphere formation and decrease E-cadherin in normal and malignant breast cells. *PLoS One.* 5:e12180.
41. Dai, W., L.J. Field, M. Rubart, S. Reuter, S.L. Hale, R. Zweigerdt, R.E. Graichen, G.L. Kay, A.J. Jyrala, A. Colman, B.P. Davidson, M. Pera, and R.A. Kloner. 2007. Survival and maturation of human embryonic stem cell-derived cardiomyocytes in rat hearts. *J Mol Cell Cardiol.* 43:504-16.
42. Dallas, N.A., L. Xia, F. Fan, M.J. Gray, P. Gaur, G. van Buren, 2nd, S. Samuel, M.P. Kim, S.J. Lim, and L.M. Ellis. 2009. Chemoresistant colorectal cancer cells, the cancer stem cell phenotype, and increased sensitivity to insulin-like growth factor-I receptor inhibition. *Cancer Res.* 69:1951-7.
43. Dasari, V.R., K. Kaur, K.K. Velpula, M. Gujrati, D. Fassett, J.D. Klopfenstein, D.H. Dinh, and J.S. Rao. 2010. Upregulation of PTEN in glioma cells by cord blood mesenchymal stem cells inhibits migration via downregulation of the PI3K/Akt pathway. *PLoS One.* 5:e10350.
44. Debeb, B.G., X. Zhang, S. Krishnamurthy, H. Gao, E. Cohen, L. Li, A.A. Rodriguez, M.D. Landis, A. Lucci, N.T. Ueno, F. Robertson, W. Xu, L. Lacerda, T.A. Buchholz, M. Cristofanilli, J.M. Reuben, M.T. Lewis, and W.A. Woodward. 2010. Characterizing cancer cells with cancer stem cell-like features in 293T human embryonic kidney cells. *Mol Cancer.* 9:180.
45. deCarvalho, A.C., K. Nelson, N. Lemke, N.L. Lehman, A.S. Arbab, S. Kalkanis, and T. Mikkelsen. 2010. Gliosarcoma stem cells undergo glial and mesenchymal differentiation in vivo. *Stem Cells.* 28:181-90.
46. Deng, S., X. Yang, H. Lassus, S. Liang, S. Kaur, Q. Ye, C. Li, L.P. Wang, K.F. Roby, S. Orsulic, D.C. Connolly, Y. Zhang, K. Montone, R. Butzow, G. Coukos, and L. Zhang. 2010. Distinct expression levels and patterns of stem cell marker, aldehyde dehydrogenase isoform 1 (ALDH1), in human epithelial cancers. *PLoS One.* 5:e10277.
47. Denner, L., Y. Bodenbun, J.G. Zhao, M. Howe, J. Cappel, R.G. Tilton, J.A. Copland, N. Forraz, C. McGuckin, and R. Urban. 2007. Directed engineering of umbilical cord blood stem cells to produce C-peptide and insulin. *Cell Prolif.* 40:367-80.
48. Di Fiore, R., A. Santulli, R.D. Ferrante, M. Giuliano, A. De Blasio, C. Messina, G. Pirozzi, V. Tirino, G. Tesoriere, and R. Vento. 2009. Identification and expansion of human osteosarcoma-cancer-stem cells by long-term 3-aminobenzamide treatment. *J Cell Physiol.* 219:301-13.
49. Donaldson, A.E., J. Cai, M. Yang, and L. Iacovitti. 2009. Human amniotic fluid stem cells do not differentiate into dopamine neurons in vitro or after transplantation in vivo. *Stem Cells Dev.* 18:1003-12.
50. Dravid, G., Y. Zhu, J. Scholes, D. Evseenko, and G.M. Crooks. 2010. Dysregulated gene expression during hematopoietic differentiation from human embryonic stem cells. *Mol Ther.* 19:768-81.
51. Dravid, G.G., and G.M. Crooks. 2011. The challenges and promises of blood engineered from human pluripotent stem cells. *Adv Drug Deliv Rev.* 63:331-41.
52. Duan, Y., A. Catana, Y. Meng, N. Yamamoto, S. He, S. Gupta, S.S. Gambhir, and M.A. Zern. 2007. Differentiation and enrichment of hepatocyte-like cells from human embryonic stem cells in vitro and in vivo. *Stem Cells.* 25:3058-68.
53. Erceg, S., M. Ronaghi, M. Oria, M.G. Rosello, M.A. Arago, M.G. Lopez, I. Radojevic, V. Moreno-Manzano, F.J. Rodriguez-Jimenez, S.S. Bhattacharya, J. Cordoba, and M. Stojkovic. 2010. Transplanted oligodendrocytes and motoneuron progenitors generated from human embryonic stem cells promote locomotor recovery after spinal cord transection. *Stem Cells.* 28:1541-9.
54. Eshpeter, A., J. Jiang, M. Au, R.V. Rajotte, K. Lu, J.S. Lebkowski, A.S. Majumdar, and G.S. Korbitt. 2008. In vivo characterization of transplanted human embryonic stem cell-derived pancreatic endocrine islet cells. *Cell Prolif.* 41:843-58.

55. Estes, B.T., and F. Guilak. 2011. Three-dimensional culture systems to induce chondrogenesis of adipose-derived stem cells. *Methods Mol Biol.* 702:201-17.
56. Fagoonee, S., R.M. Hobbs, L. De Chiara, D. Cantarella, R.M. Piro, E. Tolosano, E. Medico, P. Provero, P.P. Pandolfi, L. Silengo, and F. Altruda. 2010. Generation of functional hepatocytes from mouse germ line cell-derived pluripotent stem cells in vitro. *Stem Cells Dev.* 19:1183-94.
57. Fan, J., C. Robert, Y.Y. Jang, H. Liu, S. Sharkis, S.B. Baylin, and F.V. Rassool. 2011. Human induced pluripotent cells resemble embryonic stem cells demonstrating enhanced levels of DNA repair and efficacy of nonhomologous end-joining. *Mutat Res.* 713:8-17.
58. Feng, Q., S.J. Lu, I. Klimanskaya, I. Gomes, D. Kim, Y. Chung, G.R. Honig, K.S. Kim, and R. Lanza. 2010. Hemangioblastic derivatives from human induced pluripotent stem cells exhibit limited expansion and early senescence. *Stem Cells.* 28:704-12.
59. Foldes, G., A. Liu, R. Badiger, M. Paul-Clark, L. Moreno, Z. Lendvai, J.S. Wright, N.N. Ali, S.E. Harding, and J.A. Mitchell. 2010. Innate immunity in human embryonic stem cells: comparison with adult human endothelial cells. *PLoS One.* 5:e10501.
60. Fotovati, A., S. Abu-Ali, P.S. Wang, L.P. Deleyrolle, C. Lee, J. Triscott, J.Y. Chen, S. Franciosi, Y. Nakamura, Y. Sugita, T. Uchiumi, M. Kuwano, B.R. Leavitt, S.K. Singh, A. Jury, C. Jones, H. Wakimoto, B.A. Reynolds, C.J. Pallen, and S.E. Dunn. 2011. YB-1 Bridges Neural Stem Cells and Brain Tumor-Initiating Cells via Its Roles in Differentiation and Cell Growth. *Cancer Res.* 71:5569-78.
61. Fridley, K.M., I. Fernandez, M.T. Li, R.B. Kettlewell, and K. Roy. 2010. Unique differentiation profile of mouse embryonic stem cells in rotary and stirred tank bioreactors. *Tissue Eng Part A.* 16:3285-98.
62. Fulka, H., M. Hirose, K. Inoue, N. Ogonuki, N. Wakisaka, S. Matoba, A. Ogura, T. Mosko, T. Kott, and J. Fulka, Jr. 2011. Production of mouse embryonic stem cell lines from maturing oocytes by direct conversion of meiosis into mitosis. *Stem Cells.* 29:517-27.
63. Gaur, P., E.L. Scekusi, S. Samuel, L. Xia, F. Fan, Y. Zhou, J. Lu, F. Tozzi, G. Lopez-Berestein, P. Vivas-Mejia, A. Rashid, J.B. Fleming, E.K. Abdalla, S.A. Curley, J.N. Vauthey, A.K. Sood, J.C. Yao, and L.M. Ellis. 2011. Identification of Cancer Stem Cells in Human Gastrointestinal Carcinoid and Neuroendocrine Tumors. *Gastroenterology.* 141:1728-37. Epub 2011 July 30.
64. Ghosh, Z., M. Huang, S. Hu, K.D. Wilson, D. Dey, and J.C. Wu. 2011. Dissecting the oncogenic and tumorigenic potential of differentiated human induced pluripotent stem cells and human embryonic stem cells. *Cancer Res.* 71:5030-9.
65. Ginestier, C., M.H. Hur, E. Charafe-Jauffret, F. Monville, J. Dutcher, M. Brown, J. Jacquemier, P. Viens, C.G. Kleer, S. Liu, A. Schott, D. Hayes, D. Birnbaum, M.S. Wicha, and G. Dontu. 2007. ALDH1 is a marker of normal and malignant human mammary stem cells and a predictor of poor clinical outcome. *Cell Stem Cell.* 1:555-67.
66. Ginestier, C., S. Liu, M.E. Diebel, H. Korkaya, M. Luo, M. Brown, J. Wicinski, O. Cabaud, E. Charafe-Jauffret, D. Birnbaum, J.L. Guan, G. Dontu, and M.S. Wicha. 2010. CXCR1 blockade selectively targets human breast cancer stem cells in vitro and in xenografts. *J Clin Invest.* 120:485-97.
67. Gong, G., D. Ferrari, C.N. Dealy, and R.A. Kosher. 2010. Direct and progressive differentiation of human embryonic stem cells into the chondrogenic lineage. *J Cell Physiol.* 224:664-71.
68. Gupta, P.B., T.T. Onder, G. Jiang, K. Tao, C. Kuperwasser, R.A. Weinberg, and E.S. Lander. 2009. Identification of selective inhibitors of cancer stem cells by high-throughput screening. *Cell.* 138:645-59.
69. Hasegawa, K., A.B. Cowan, N. Nakatsuji, and H. Suemori. 2007. Efficient multicistronic expression of a transgene in human embryonic stem cells. *Stem Cells.* 25:1707-12.
70. Hayes, B., S.R. Fagerlie, A. Ramakrishnan, S. Baran, M. Harkey, L. Graf, M. Bar, A. Bendoraite, M. Tewari, and B. Torok-Storb. 2008. Derivation, characterization, and in vitro differentiation of canine embryonic stem cells. *Stem Cells.* 26:465-73.
71. Hirata, N., Y. Sekino, and Y. Kanda. 2010. Nicotine increases cancer stem cell population in MCF-7 cells. *Biochem Biophys Res Commun.* 403:138-43.
72. Hong, S.H., T. Werbowetski-Ogilvie, V. Ramos-Mejia, J.B. Lee, and M. Bhatia. 2010. Multi-parameter comparisons of embryoid body differentiation toward human stem cell applications. *Stem Cell Res.* 5:120-30.
73. Hsiao, E.C., Y. Yoshinaga, T.D. Nguyen, S.L. Musone, J.E. Kim, P. Swinton, I. Espineda, C. Manalac, P.J. deJong, and B.R. Conklin. 2008. Marking embryonic stem cells with a 2A self-cleaving peptide: a NKX2-5 emerald GFP BAC reporter. *PLoS One.* 3:e2532.

74. Huang, X., E. Gschwend, B. Van Handel, D. Cheng, H.K. Mikkola, and O.N. Witte. 2011. Regulated expression of microRNAs-126/126* inhibits erythropoiesis from human embryonic stem cells. *Blood*. 117:2157-65.
75. Huang, X., Y. Sheng, and M. Guan. 2011. Co-expression of stem cell genes CD133 and CD44 in colorectal cancers with early liver metastasis. *Surg Oncol*. Epub 2011 July 14.
76. Huang, Z., J. Yu, P. Toselli, J. Bhawan, V. Sudireddy, L. Taylor, and P. Polgar. 2007. Angiotensin II type 1 and bradykinin B2 receptors expressed in early stage epithelial cells derived from human embryonic stem cells. *J Cell Physiol*. 211:816-25.
77. Ishii, T., K. Fukumitsu, K. Yasuchika, K. Adachi, E. Kawase, H. Suemori, N. Nakatsuji, I. Ikai, and S. Uemoto. 2008. Effects of extracellular matrixes and growth factors on the hepatic differentiation of human embryonic stem cells. *Am J Physiol Gastrointest Liver Physiol*. 295:G313-21.
78. Ishizuka, T., and Y. Watanabe. 2011. alpha(1)-Adrenoceptor stimulation enhances leukemia inhibitory factor-induced proliferation of mouse-induced pluripotent stem cells. *Eur J Pharmacol*. 668:42-56.
79. Iwamuro, M., T. Komaki, Y. Kubota, M. Seita, H. Kawamoto, T. Yuasa, J.M. Shahid, R.A. Hassan, W.A. Hassan, S. Nakaji, Y. Nishikawa, E. Kondo, K. Yamamoto, I.J. Fox, and N. Kobayashi. 2010. Hepatic differentiation of mouse iPS cells in vitro. *Cell Transplant*. 19:841-7.
80. James, D., H.S. Nam, M. Seandel, D. Nolan, T. Janovitz, M. Tomishima, L. Studer, G. Lee, D. Lyden, R. Benezra, N. Zaninovic, Z. Rosenwaks, S.Y. Rabbany, and S. Rafii. 2010. Expansion and maintenance of human embryonic stem cell-derived endothelial cells by TGFbeta inhibition is Id1 dependent. *Nat Biotechnol*. 28:161-6.
81. Jiang, J., M. Au, K. Lu, A. Eshpeter, G. Korbitt, G. Fisk, and A.S. Majumdar. 2007. Generation of insulin-producing islet-like clusters from human embryonic stem cells. *Stem Cells*. 25:1940-53.
82. Jiang, P., S.N. Rushing, C.W. Kong, J. Fu, D.K. Lieu, C.W. Chan, W. Deng, and R.A. Li. 2010. Electrophysiological properties of human induced pluripotent stem cells. *Am J Physiol Cell Physiol*. 298:C486-95.
83. Jiang, P., V. Selvaraj, and W. Deng. 2010. Differentiation of embryonic stem cells into oligodendrocyte precursors. *J Vis Exp*. 39:22-4. doi: 10.3791/1960.
84. Jiang, X., Y. Gwye, S.J. McKeown, M. Bronner-Fraser, C. Lutzko, and E.R. Lawlor. 2009. Isolation and characterization of neural crest stem cells derived from in vitro-differentiated human embryonic stem cells. *Stem Cells Dev*. 18:1059-70.
85. Jo, M., B.M. Eastman, D.L. Webb, K. Stoletov, R. Klemke, and S.L. Gonias. 2010. Cell signaling by urokinase-type plasminogen activator receptor induces stem cell-like properties in breast cancer cells. *Cancer Res*. 70:8948-58.
86. Kai, K., O. Nagano, E. Sugihara, Y. Arima, O. Sampetean, T. Ishimoto, M. Nakanishi, N.T. Ueno, H. Iwase, and H. Saya. 2009. Maintenance of HCT116 colon cancer cell line conforms to a stochastic model but not a cancer stem cell model. *Cancer Sci*. 100:2275-82.
87. Kakarala, M., D.E. Brenner, H. Korkaya, C. Cheng, K. Tazi, C. Ginestier, S. Liu, G. Dontu, and M.S. Wicha. 2010. Targeting breast stem cells with the cancer preventive compounds curcumin and piperine. *Breast Cancer Res Treat*. 122:777-85.
88. Kamata, M., S. Liu, M. Liang, Y. Nagaoka, and I.S. Chen. 2010. Generation of human induced pluripotent stem cells bearing an anti-HIV transgene by a lentiviral vector carrying an internal murine leukemia virus promoter. *Hum Gene Ther*. 21:1555-67.
89. Kelly, O.G., M.Y. Chan, L.A. Martinson, K. Kadoya, T.M. Ostertag, K.G. Ross, M. Richardson, M.K. Carpenter, K.A. D'Amour, E. Kroon, M. Moorman, E.E. Baetge, and A.G. Bang. 2011. Cell-surface markers for the isolation of pancreatic cell types derived from human embryonic stem cells. *Nat Biotechnol*. 29:750-6.
90. Keshet, G.I., I. Goldstein, O. Itzhaki, K. Cesarkas, L. Shenhav, A. Yakirevitch, A.J. Treves, J. Schachter, N. Amariglio, and G. Rechavi. 2008. MDR1 expression identifies human melanoma stem cells. *Biochem Biophys Res Commun*. 368:930-6.
91. Khan, I.F., R.K. Hirata, P.R. Wang, Y. Li, J. Kho, A. Nelson, Y. Huo, M. Zavaljevski, C. Ware, and D.W. Russell. 2010. Engineering of human pluripotent stem cells by AAV-mediated gene targeting. *Mol Ther*. 18:1192-9.
92. Kibschull, M., M. Mileikovsky, I.P. Michael, S.J. Lye, and A. Nagy. 2010. Human embryonic fibroblasts support single cell enzymatic expansion of human embryonic stem cells in xeno-free cultures. *Stem Cell Res*. 6:70-82.

93. Kokovay, E., S. Goderie, Y. Wang, S. Lotz, G. Lin, Y. Sun, B. Roysam, Q. Shen, and S. Temple. 2010. Adult SVZ lineage cells home to and leave the vascular niche via differential responses to SDF1/CXCR4 signaling. *Cell Stem Cell*. 7:163-73.
94. Kong, D., S. Banerjee, A. Ahmad, Y. Li, Z. Wang, S. Sethi, and F.H. Sarkar. 2010. Epithelial to mesenchymal transition is mechanistically linked with stem cell signatures in prostate cancer cells. *PLoS One*. 5:e12445.
95. Kossack, N., J. Meneses, S. Shefi, H.N. Nguyen, S. Chavez, C. Nicholas, J. Gromoll, P.J. Turek, and R.A. Reijo-Pera. 2009. Isolation and characterization of pluripotent human spermatogonial stem cell-derived cells. *Stem Cells*. 27:138-49.
96. Kreso, A., and C.A. O'Brien. 2008. Colon cancer stem cells. *Curr Protoc Stem Cell Biol*. Ch. 3, Unit 3.1.
97. Krishnamurthy, S., Z. Dong, D. Vodopyanov, A. Imai, J.I. Helman, M.E. Prince, M.S. Wicha, and J.E. Nor. 2010. Endothelial cell-initiated signaling promotes the survival and self-renewal of cancer stem cells. *Cancer Res*. 70:9969-78.
98. Ku, H.T., J. Chai, Y.J. Kim, P. White, S. Purohit-Ghelani, K.H. Kaestner, and J.S. Bromberg. 2007. Insulin-expressing colonies developed from murine embryonic stem cell-derived progenitors. *Diabetes*. 56:921-9.
99. Kumar, A., H. Gao, J. Xu, J. Reuben, D. Yu, and K. Mehta. 2011. Evidence that aberrant expression of tissue transglutaminase promotes stem cell characteristics in mammary epithelial cells. *PLoS One*. 6:e20701.
100. LaMarca, H.L., A.P. Visbal, C.J. Creighton, H. Liu, Y. Zhang, F. Behbod, and J.M. Rosen. 2010. CCAAT/enhancer binding protein beta regulates stem cell activity and specifies luminal cell fate in the mammary gland. *Stem Cells*. 28:535-44.
101. Lamba, D.A., A. McUsic, R.K. Hirata, P.R. Wang, D. Russell, and T.A. Reh. 2010. Generation, purification and transplantation of photoreceptors derived from human induced pluripotent stem cells. *PLoS One*. 5:e8763.
102. Lamba, D.A., and T.A. Reh. 2011. Microarray characterization of human embryonic stem cell-derived retinal cultures. *Invest Ophthalmol Vis Sci*. 52:4897-906.
103. Lampton, P.W., R.J. Crooker, J.A. Newmark, and C.M. Warner. 2008. Expression of major histocompatibility complex class I proteins and their antigen processing chaperones in mouse embryonic stem cells from fertilized and parthenogenetic embryos. *Tissue Antigens*. 72:448-57.
104. Lavon, N. 2010. Generation of hepatocytes from human embryonic stem cells. *Methods Mol Biol*. 640:237-46.
105. Le, L.Q., T. Shipman, D.K. Burns, and L.F. Parada. 2009. Cell of origin and microenvironment contribution for NF1-associated dermal neurofibromas. *Cell Stem Cell*. 4:453-63.
106. Lecina, M., S. Ting, A. Choo, S. Reuveny, and S. Oh. 2010. Scalable platform for human embryonic stem cell differentiation to cardiomyocytes in suspended microcarrier cultures. *Tissue Eng Part C Methods*. 16:1609-19.
107. Lee, G., H. Kim, Y. Elkabetz, G. Al Shamy, G. Panagiotakos, T. Barberi, V. Tabar, and L. Studer. 2007. Isolation and directed differentiation of neural crest stem cells derived from human embryonic stem cells. *Nat Biotechnol*. 25:1468-75.
108. Lee, S.H., B. Hong, A. Sharabi, X.F. Huang, and S.Y. Chen. 2009. Embryonic stem cells and mammary luminal progenitors directly sense and respond to microbial products. *Stem Cells*. 27:1604-15.
109. Leung, H.W., A. Chen, A.B. Choo, S. Reuveny, and S.K. Oh. 2010. Agitation can induce differentiation of human pluripotent stem cells in microcarrier cultures. *Tissue Eng Part C Methods*. 17:165-72.
110. Levina, V., A. Marrangoni, T. Wang, S. Parikh, Y. Su, R. Herberman, A. Lokshin, and E. Gorelik. 2010. Elimination of human lung cancer stem cells through targeting of the stem cell factor-c-kit autocrine signaling loop. *Cancer Res*. 70:338-46.
111. Li, C.G., Y. Lu, B.B. Wang, Y.J. Zhang, R.S. Zhang, B. Chen, H. Xu, F. Jin, and P. Lu. 2011. clinical implications of stem cell gene Oct-4 expression in breast cancer. *Ann Surg*. 253:1165-71.8
112. Li, F., S. Bronson, and C. Niyibizi. 2010. Derivation of murine induced pluripotent stem cells (iPS) and assessment of their differentiation toward osteogenic lineage. *J Cell Biochem*. 109:643-52.
113. Li, H., M. Jiang, S. Honorio, L. Patrawala, C.R. Jeter, T. Calhoun-Davis, S.W. Hayward, and D.G. Tang. 2009. Methodologies in assaying prostate cancer stem cells. *Methods Mol Biol*. 568:85-138.

114. Li, J., J. Bardy, L.Y. Yap, A. Chen, V. Nurcombe, S.M. Cool, S.K. Oh, and W.R. Birch. 2010. Impact of vitronectin concentration and surface properties on the stable propagation of human embryonic stem cells. *Biointerphases*. 5:FA132-42.
115. Li, S., Y. Gao, T. Tokuyama, J. Yamamoto, N. Yokota, S. Yamamoto, S. Terakawa, M. Kitagawa, and H. Namba. 2007. Genetically engineered neural stem cells migrate and suppress glioma cell growth at distant intracranial sites. *Cancer Lett*. 251:220-7.
116. Li, W., and S. Ding. 2010. Generation of novel rat and human pluripotent stem cells by reprogramming and chemical approaches. *Methods Mol Biol*. 636:293-300.
117. Li, Y., T. Zhang, H. Korkaya, S. Liu, H.F. Lee, B. Newman, Y. Yu, S.G. Clouthier, S.J. Schwartz, M.S. Wicha, and D. Sun. 2010. Sulforaphane, a dietary component of broccoli/broccoli sprouts, inhibits breast cancer stem cells. *Clin Cancer Res*. 16:2580-90.
118. Li, Z., Y. Suzuki, M. Huang, F. Cao, X. Xie, A.J. Connolly, P.C. Yang, and J.C. Wu. 2008. Comparison of reporter gene and iron particle labeling for tracking fate of human embryonic stem cells and differentiated endothelial cells in living subjects. *Stem Cells*. 26:864-73.
119. Li, Z., K.D. Wilson, B. Smith, D.L. Kraft, F. Jia, M. Huang, X. Xie, R.C. Robbins, S.S. Gambhir, I.L. Weissman, and J.C. Wu. 2009. Functional and transcriptional characterization of human embryonic stem cell-derived endothelial cells for treatment of myocardial infarction. *PLoS One*. 4:e8443.
120. Limbert, C., R. Ebert, T. Schilling, G. Path, P. Benisch, L. Klein-Hitpass, J. Seufert, and F. Jakob. 2009. Functional signature of human islet-derived precursor cells compared to bone marrow-derived mesenchymal stem cells. *Stem Cells Dev*. 19:679-91.
121. Lin, S., V. Tran, and P. Talbot. 2009. Comparison of toxicity of smoke from traditional and harm-reduction cigarettes using mouse embryonic stem cells as a novel model for preimplantation development. *Hum Reprod*. 24:386-97.
122. Lindstrom, S., M. Eriksson, T. Vazin, J. Sandberg, J. Lundeberg, J. Frisen, and H. Andersson-Svahn. 2009. High-density microwell chip for culture and analysis of stem cells. *PLoS One*. 4:e6997.
123. Li, C., J.J. Wu, M. Hynes, J. Dosch, B. Sarkar, T.H. Welling, M.P. di Magliano, and D.M. Simeone. 2011. c-Met is a Marker of Pancreatic Cancer Stem Cells and Therapeutic Target. *Gastroenterology*. 141:2218-27. Epub 2011 Aug 22.
124. Liu, C.G., Y. Lu, B.B. Wang, Y.J. Zhang, R.S. Zhang, B. Chen, H. Xu, F. Jin, and P. Lu. 2011. Clinical implications of stem cell gene Oct-4 expression in breast cancer. *Ann Surg*. 253:1165-71.
125. Liu, H., Z. Ye, Y. Kim, S. Sharkis, and Y.Y. Jang. 2010. Generation of endoderm-derived human induced pluripotent stem cells from primary hepatocytes. *Hepatology*. 51:1810-9.
126. Lamba, D.A., and T.A. Reh. 2011. Microarray characterization of human embryonic stem cell-derived retinal cultures. *Invest Ophthalmol Vis Sci*. 52:4897-906.
127. Liu, Y., and P.A. Labosky. 2008. Regulation of embryonic stem cell self-renewal and pluripotency by Foxd3. *Stem Cells*. 26:2475-84.
128. Lu, S.J., Q. Feng, S. Caballero, Y. Chen, M.A. Moore, M.B. Grant, and R. Lanza. 2007. Generation of functional hemangioblasts from human embryonic stem cells. *Nat Methods*. 4:501-9.
129. Lu, S.J., Q. Feng, Y. Ivanova, C. Luo, T. Li, F. Li, G.R. Honig, and R. Lanza. 2007. Recombinant HoxB4 fusion proteins enhance hematopoietic differentiation of human embryonic stem cells. *Stem Cells Dev*. 16:547-59.
130. Lu, S.J., Q. Feng, J.S. Park, L. Vida, B.S. Lee, M. Strausbauch, P.J. Wettstein, G.R. Honig, and R. Lanza. 2008. Biologic properties and enucleation of red blood cells from human embryonic stem cells. *Blood*. 112:4475-84.
131. Mahmood, A., L. Harkness, H.D. Schroder, B.M. Abdallah, and M. Kassem. 2010. Enhanced differentiation of human embryonic stem cells to mesenchymal progenitors by inhibition of TGF-beta/activin/nodal signaling using SB-431542. *J Bone Miner Res*. 25:1216-33.
132. Maioli, M., S. Santaniello, A. Montella, P. Bandiera, S. Cantoni, C. Cavallini, F. Bianchi, V. Lionetti, F. Rizzolio, I. Marchesi, L. Bagella, and C. Ventura. 2010. Hyaluronan esters drive Smad gene expression and signaling enhancing cardiogenesis in mouse embryonic and human mesenchymal stem cells. *PLoS One*. 5:e15151.
133. Marshall, G.P., 2nd, H.H. Ross, O. Suslov, T. Zheng, D.A. Steindler, and E.D. Laywell. 2008. Production of neurospheres from CNS tissue. *Methods Mol Biol*. 438:135-50.
134. Meng, X.L., J.S. Shen, S. Kawagoe, T. Ohashi, R.O. Brady, and Y. Eto. 2010. Induced pluripotent stem cells derived from mouse models of lysosomal storage disorders. *Proc Natl Acad Sci U S A*. 107:7886-91.

135. Mohr, J.C., J. Zhang, S.M. Azarin, A.G. Soerens, J.J. de Pablo, J.A. Thomson, G.E. Lyons, S.P. Palecek, and T.J. Kamp. 2010. The microwell control of embryoid body size in order to regulate cardiac differentiation of human embryonic stem cells. *Biomaterials*. 31:1885-93.
136. Moon, S.H., J.S. Kim, S.J. Park, H.J. Lee, J.T. Do, and H.M. Chung. 2011. A system for treating ischemic disease using human embryonic stem cell-derived endothelial cells without direct incorporation. *Biomaterials*. 32:6445-55.
137. Morel, A.P., M. Lievre, C. Thomas, G. Hinkal, S. Ansieau, and A. Puisieux. 2008. Generation of breast cancer stem cells through epithelial-mesenchymal transition. *PLoS One*. 3:e2888.
138. Mountziaris, P.M., S.N. Tzouanas, and A.G. Mikos. 2010. Dose effect of tumor necrosis factor-alpha on in vitro osteogenic differentiation of mesenchymal stem cells on biodegradable polymeric microfiber scaffolds. *Biomaterials*. 31:1666-75.
139. Mujoo, K., V.G. Sharin, N.S. Bryan, J.S. Krumenacker, C. Sloan, S. Parveen, L.E. Nikonoff, A.Y. Kots, and F. Murad. 2008. Role of nitric oxide signaling components in differentiation of embryonic stem cells into myocardial cells. *Proc Natl Acad Sci U S A*. 105:18924-9.
140. Nicholas, C.R., K.M. Haston, A.K. Grewall, T.A. Longacre, and R.A. Reijo Pera. 2009. Transplantation directs oocyte maturation from embryonic stem cells and provides a therapeutic strategy for female infertility. *Hum Mol Genet*. 18:4376-89.
141. Nie, Y., V. Bergendahl, D.J. Hei, J.M. Jones, and S.P. Palecek. 2009. Scalable culture and cryopreservation of human embryonic stem cells on microcarriers. *Biotechnol Prog*. 25:20-31.
142. Niebruegge, S., C.L. Bauwens, R. Peerani, N. Thavandiran, S. Masse, E. Sevaptisidis, K. Nanthakumar, K. Woodhouse, M. Husain, E. Kumacheva, and P.W. Zandstra. 2009. Generation of human embryonic stem cell-derived mesoderm and cardiac cells using size-specified aggregates in an oxygen-controlled bioreactor. *Biotechnol Bioeng*. 102:493-507.
143. Nishimoto, K.P., S.Y. Tseng, J.S. Lebkowski, and A. Reddy. 2011. Modification of human embryonic stem cell-derived dendritic cells with mRNA for efficient antigen presentation and enhanced potency. *Regen Med*. 6:303-18.
144. Nourse, M.B., D.E. Halpin, M. Scatena, D.J. Mortisen, N.L. Tulloch, K.D. Hauch, B. Torok-Storb, B.D. Ratner, L. Pabon, and C.E. Murry. 2009. VEGF induces differentiation of functional endothelium from human embryonic stem cells: implications for tissue engineering. *Arterioscler Thromb Vasc Biol*. 30:80-9.
145. Oh, P.S., V.B. Patel, M.A. Sanders, S.S. Kanwar, Y. Yu, J. Nautiyal, B.B. Patel, and A.P. Majumdar. 2011. Schlafen-3 decreases cancer stem cell marker expression and autocrine/juxtacrine signaling in FOLFOX-resistant colon cancer cells. *Am J Physiol Gastrointest Liver Physiol*. 301:G347-55.
146. Oh, S.K., A.K. Chen, Y. Mok, X. Chen, U.M. Lim, A. Chin, A.B. Choo, and S. Reuveny. 2009. Long-term microcarrier suspension cultures of human embryonic stem cells. *Stem Cell Res*. 2:219-30.
147. Okamura, R.M., J. Lebkowski, M. Au, C.A. Priest, J. Denham, and A.S. Majumdar. 2007. Immunological properties of human embryonic stem cell-derived oligodendrocyte progenitor cells. *J Neuroimmunol*. 192:134-44.
148. O'Leary, T., B. Heindryckx, S. Lierman, M. Van der Jeught, B. Menten, D. Deforce, R. Cornelissen, S.C. de Sousa Lopes, and P. De Sutter. 2011. The influence of early embryo traits on human embryonic stem cell derivation efficiency. *Stem Cells Dev*. 20:785-93.
149. Olivier, S., M. Jacoby, C. Brillon, S. Bouletreau, T. Mollet, O. Nerriere, A. Angel, S. Danet, B. Soultou, F. Guehenneux, L. Gauthier, M. Berthome, H. Vie, N. Beltraminelli, and M. Mehtali. 2010. EB66 cell line, a duck embryonic stem cell-derived substrate for the industrial production of therapeutic monoclonal antibodies with enhanced ADCC activity. *MAbs*. 2:405-15.
150. Olmer, R., A. Haase, S. Merkert, W. Cui, J. Palecek, C. Ran, A. Kirschning, T. Scheper, S. Glage, K. Miller, E.C. Curnow, E.S. Hayes, and U. Martin. 2010. Long term expansion of undifferentiated human iPS and ES cells in suspension culture using a defined medium. *Stem Cell Res*. 5:51-64.
151. Pabbruwe, M.B., W. Kafienah, J.F. Tarlton, S. Mistry, D.J. Fox, and A.P. Hollander. 2010. Repair of meniscal cartilage white zone tears using a stem cell/collagen-scaffold implant. *Biomaterials*. 31:2583-91.
152. Pan, C., A. Hicks, X. Guan, H. Chen, and C.E. Bishop. 2010. SNL fibroblast feeder layers support derivation and maintenance of human induced pluripotent stem cells. *J Genet Genomics*. 37:241-8.
153. Paranjape, A.N., T. Mandal, G. Mukherjee, M.V. Kumar, K. Sengupta, and A. Rangarajan. 2011. Introduction of SV40ER and hTERT into mammospheres generates breast cancer cells with stem cell properties. *Oncogene*. doi: 10.1038/onc2011.378 epub ahead of print.

154. Pascual, I., G.F. de Miguel, U.A. Gomez-Pinedo, F. de Miguel, M.G. Arranz, and D. Garcia-Olmo. 2008. Adipose-derived mesenchymal stem cells in biosutures do not improve healing of experimental colonic anastomoses. *Br J Surg.* 95:1180-4.
155. Phillips, B.W., H. Hentze, W.L. Rust, Q.P. Chen, H. Chipperfield, E.K. Tan, S. Abraham, A. Sadasivam, P.L. Soong, S.T. Wang, R. Lim, W. Sun, A. Colman, and N.R. Dunn. 2007. Directed differentiation of human embryonic stem cells into the pancreatic endocrine lineage. *Stem Cells Dev.* 16:561-78.
156. Preynat-Seauve, O., C. de Rham, D. Tirefort, S. Ferrari-Lacraz, K.H. Krause, and J. Villard. 2009. Neural progenitors derived from human embryonic stem cells are targeted by allogeneic T and natural killer cells. *J Cell Mol Med.* 13:3556-69.
157. Preynat-Seauve, O., D.M. Suter, D. Tirefort, L. Turchi, T. Virolle, H. Chneiweiss, M. Foti, J.A. Lobrinus, L. Stoppini, A. Feki, M. Dubois-Dauphin, and K.H. Krause. 2009. Development of human nervous tissue upon differentiation of embryonic stem cells in three-dimensional culture. *Stem Cells.* 27:509-20.
158. Pruksananonda, K., R. Rungsiwiwut, P. Numchaisrika, V. Ahnonkitpanich, and P. Virutamasen. 2009. Development of human embryonic stem cell derivation. *J Med Assoc Thai.* 92:443-50.
159. Pryzhkova, M.V., A. Peters, and E.T. Zambidis. 2010. Erythropoietic differentiation of a human embryonic stem cell line harbouring the sickle cell anaemia mutation. *Reprod Biomed Online.* 21:196-205.
160. Paranjape, A.N., T. Mandal, G. Mukherjee, M.V. Kumar, K. Sengupta, and A. Rangarajan. 2011. Introduction of SV40ER and hTERT into mammospheres generates breast cancer cells with stem cell properties. *Oncogene.* doi: 10.1038/onc2011.378 epub ahead of print.
161. Rajala, K., M. Pekkanen-Mattila, and K. Aalto-Setälä. 2011. Cardiac differentiation of pluripotent stem cells. *Stem Cells Int.* 2011:383709.
162. Reh, T.A., D. Lamba, and J. Gust. 2010. Directing human embryonic stem cells to a retinal fate. *Methods Mol Biol.* 636:139-53.
163. Ren, J., P. Jin, E. Wang, F.M. Marincola, and D.F. Stronck. 2009. MicroRNA and gene expression patterns in the differentiation of human embryonic stem cells. *J Transl Med.* 7:20.
164. Robertson, F.M., M.A. Ogasawara, Z. Ye, K. Chu, R. Pickei, B.G. Debeb, W.A. Woodward, W.N. Hittelman, M. Cristofanilli, and S.H. Barsky. 2010. Imaging and analysis of 3D tumor spheroids enriched for a cancer stem cell phenotype. *J Biomol Screen.* 15:820-9.
165. Rodrigues, C.A., M.M. Diogo, C.L. da Silva, and J.M. Cabral. 2011. Microcarrier expansion of mouse embryonic stem cell-derived neural stem cells in stirred bioreactors. *Biotechnol Appl Biochem.* 58:231-42.
166. Rooney, G.E., G.I. Nistor, F.B. Barry, and H.S. Keirstead. 2010. In vitro differentiation potential of human embryonic versus adult stem cells. *Regen Med.* 5:365-79.
167. Rowland, T.J., L.M. Miller, A.J. Blaschke, E.L. Doss, A.J. Bonham, S.T. Hikita, L.V. Johnson, and D.O. Clegg. 2009. Roles of integrins in human induced pluripotent stem cell growth on Matrigel and vitronectin. *Stem Cells Dev.* 19:1231-40.
168. Rufaihah, A.J., H.K. Haider, B.C. Heng, L. Ye, R.S. Tan, W.S. Toh, X.F. Tian, E.K. Sim, and T. Cao. 2010. Therapeutic angiogenesis by transplantation of human embryonic stem cell-derived CD133+ endothelial progenitor cells for cardiac repair. *Regen Med.* 5:231-44.
169. Rufaihah, A.J., H.K. Haider, B.C. Heng, L. Ye, W.S. Toh, X.F. Tian, K. Lu, E.K. Sim, and T. Cao. 2007. Directing endothelial differentiation of human embryonic stem cells via transduction with an adenoviral vector expressing the VEGF(165) gene. *J Gene Med.* 9:452-61.
170. Sartiani, L., E. Bettiol, F. Stillitano, A. Mugelli, E. Cerbai, and M.E. Jaconi. 2007. Developmental changes in cardiomyocytes differentiated from human embryonic stem cells: a molecular and electrophysiological approach. *Stem Cells.* 25:1136-44.
171. Sato, T., J.H. van Es, H.J. Snippert, D.E. Stange, R.G. Vries, M. van den Born, N. Barker, N.F. Shroyer, M. van de Wetering, and H. Clevers. 2010. Paneth cells constitute the niche for Lgr5 stem cells in intestinal crypts. *Nature.* 469:415-8.
172. Saunders, L.R., A.D. Sharma, J. Tawney, M. Nakagawa, K. Okita, S. Yamanaka, H. Willenbring, and E. Verdin. 2010. miRNAs regulate SIRT1 expression during mouse embryonic stem cell differentiation and in adult mouse tissues. *Aging (Albany NY).* 2:415-31.
173. Schenke-Layland, K., K.E. Rhodes, E. Angelis, Y. Butylkova, S. Heydarkhan-Hagvall, C. Gekas, R. Zhang, J.I. Goldhaber, H.K. Mikkola, K. Plath, and W.R. MacLellan. 2008. Reprogrammed mouse fibroblasts differentiate into cells of the cardiovascular and hematopoietic lineages. *Stem Cells.* 26:1537-46.

174. Schriebl, K., S. Lim, A. Choo, A. Tscheliessnig, and A. Jungbauer. 2010. Stem cell separation: a bottleneck in stem cell therapy. *Biotechnol J.* 5:50-61.
175. Shankar, S., D. Nall, S.N. Tang, D. Meeker, J. Passarini, J. Sharma, and R.K. Srivastava. 2011. Resveratrol inhibits pancreatic cancer stem cell characteristics in human and KrasG12D transgenic mice by inhibiting pluripotency maintaining factors and epithelial-mesenchymal transition. *PLoS One.* 6:e16530.
176. Shi, M.F., J. Jiao, W.G. Lu, F. Ye, D. Ma, Q.G. Dong, and X. Xie. 2010. Identification of cancer stem cell-like cells from human epithelial ovarian carcinoma cell line. *Cell Mol Life Sci.* 67:3915-25.
177. Shi, X., J. Gipp, and W. Bushman. 2007. Anchorage-independent culture maintains prostate stem cells. *Dev Biol.* 312:396-406.
178. Shim, J.W., C.H. Park, Y.C. Bae, J.Y. Bae, S. Chung, M.Y. Chang, H.C. Koh, H.S. Lee, S.J. Hwang, K.H. Lee, Y.S. Lee, C.Y. Choi, and S.H. Lee. 2007. Generation of functional dopamine neurons from neural precursor cells isolated from the subventricular zone and white matter of the adult rat brain using Nurr1 overexpression. *Stem Cells.* 25:1252-62.
179. Shimizu, K., A. Ito, T. Yoshida, Y. Yamada, M. Ueda, and H. Honda. 2007. Bone tissue engineering with human mesenchymal stem cell sheets constructed using magnetite nanoparticles and magnetic force. *J Biomed Mater Res B Appl Biomater.* 82:471-80.
180. Silk, K.M., S.Y. Tseng, K.P. Nishimoto, J. Lebkowski, A. Reddy, and P.J. Fairchild. 2011. Differentiation of dendritic cells from human embryonic stem cells. *Methods Mol Biol.* 767:449-61.
181. Silva, I.A., S. Bai, K. McLean, K. Yang, K. Griffith, D. Thomas, C. Ginestier, C. Johnston, A. Kueck, R.K. Reynolds, M.S. Wicha, and R.J. Buckanovich. 2011. Aldehyde dehydrogenase in combination with CD133 defines angiogenic ovarian cancer stem cells that portend poor patient survival. *Cancer Res.* 71:3991-4001.
182. Simoes, B.M., M. Piva, O. Iriando, V. Comaills, J.A. Lopez-Ruiz, I. Zabalza, J.A. Mieza, O. Acinas, and M.D. Vivanco. 2010. Effects of estrogen on the proportion of stem cells in the breast. *Breast Cancer Res Treat.* 129:23-35.
183. Simoes, B.M., M. Piva, O. Iriando, V. Comaills, J.A. Lopez-Ruiz, I. Zabalza, J.A. Mieza, O. Acinas, and M.D. Vivanco. 2011. Effects of estrogen on the proportion of stem cells in the breast. *Breast Cancer Res Treat.* 129:23-35.
184. Sivarajah, S., G.S. Raj, A.J. Mathews, N.B. Sahib, W.S. Hwang, and J.M. Crook. 2010. The generation of GLP-grade human embryonic stem cell banks from four clinical-grade cell lines for pre-clinical research. *In Vitro Cell Dev Biol Anim.* 46:210-6.
185. Smits, A.M., L.G. van den Hengel, S. van den Brink, C.H. Metz, P.A. Doevendans, and M.J. Goumans. 2009. A new in vitro model for stem cell differentiation and interaction. *Stem Cell Res.* 2:108-12.
186. Song, B., J.C. Niclis, M.A. Alikhan, S. Sakkal, A. Sylvain, P.G. Kerr, A.L. Laslett, C.A. Bernard, and S.D. Ricardo. 2011. Generation of induced pluripotent stem cells from human kidney mesangial cells. *J Am Soc Nephrol.* 22:1213-20.
187. Soto-Gutierrez, A., N. Navarro-Alvarez, D. Zhao, J.D. Rivas-Carrillo, J. Lebkowski, N. Tanaka, I.J. Fox, and N. Kobayashi. 2007. Differentiation of mouse embryonic stem cells to hepatocyte-like cells by co-culture with human liver nonparenchymal cell lines. *Nat Protoc.* 2:347-56.
188. Spelke, D.P., D. Ortmann, A. Khademhosseini, L. Ferreira, and J.M. Karp. 2011. Methods for embryoid body formation: the microwell approach. *Methods Mol Biol.* 690:151-62.
189. Sritanaudomchai, H., H. Ma, L. Clepper, S. Gokhale, R. Bogan, J. Hennebold, D. Wolf, and S. Mitalipov. 2010. Discovery of a novel imprinted gene by transcriptional analysis of parthenogenetic embryonic stem cells. *Hum Reprod.* 25:1927-41.
190. Stevens, K.R., L. Pabon, V. Muskheli, and C.E. Murry. 2009. Scaffold-free human cardiac tissue patch created from embryonic stem cells. *Tissue Eng Part A.* 15:1211-22.
191. Storci, G., P. Sansone, S. Mari, G. D'Uva, S. Tavolari, T. Guarnieri, M. Taffurelli, C. Ceccarelli, D. Santini, P. Chieco, K.B. Marcu, and M. Bonafe. 2010. TNFalpha up-regulates SLUG via the NF-kappaB/HIF1alpha axis, which imparts breast cancer cells with a stem cell-like phenotype. *J Cell Physiol.* 225:682-91.
192. Stover, A.E., and P.H. Schwartz. 2010. The generation of embryoid bodies from feeder-based or feeder-free human pluripotent stem cell cultures. *Methods Mol Biol.* 767:391-8.
193. Su, Z., C. Frye, K.M. Bae, V. Kelley, and J. Vieweg. 2008. Differentiation of human embryonic stem cells into immunostimulatory dendritic cells under feeder-free culture conditions. *Clin Cancer Res.* 14:6207-17.

194. Subramanian, K., D.J. Owens, T.D. O'Brien, C.M. Verfaillie, and W.S. Hu. 2011. Enhanced differentiation of adult bone marrow-derived stem cells to liver lineage in aggregate culture. *Tissue Eng Part A*. 17:2331-41.
195. Sun, N., N.J. Panetta, D.M. Gupta, K.D. Wilson, A. Lee, F. Jia, S. Hu, A.M. Cherry, R.C. Robbins, M.T. Longaker, and J.C. Wu. 2009. Feeder-free derivation of induced pluripotent stem cells from adult human adipose stem cells. *Proc Natl Acad Sci U S A*. 106:15720-5.
196. Sun, S., and Z. Wang. 2010. ALDH high adenoid cystic carcinoma cells display cancer stem cell properties and are responsible for mediating metastasis. *Biochem Biophys Res Commun*. 396:843-8.
197. Sun, S., and Z. Wang. 2011. Head neck squamous cell carcinoma c-Met(+) cells display cancer stem cell properties and are responsible for cisplatin-resistance and metastasis. *Int J Cancer*. 129:2337-48. doi: 10.1002/ijc.25927. Epub 2011 June 18.
198. Suzuki, J.S., and M. Ishido. 2011. Transcriptome of tributyltin-induced apoptosis of the cultured rat mesencephalic neural stem cells. *Toxicology*. 287:61-8.
199. Tabor, M.H., M.R. Clay, J.H. Owen, C.R. Bradford, T.E. Carey, G.T. Wolf, and M.E. Prince. 2011. Head and neck cancer stem cells: the side population. *Laryngoscope*. 121:527-33.
200. Takaishi, S.T. Okumura, S. Tu, S.S. Wang, W. Shibata, R. Vigneshwaran, S.A. Gordon, Y. Shimada, and T.C. Wang. 2009. Identification of gastric cancer stem cells using the cell surface marker CD44. *Stem Cells*. 27:1006-20.
201. Tang, Q.L., Z.Q. Zhao, J.C. Li, Y. Liang, J.Q. Yin, C.Y. Zou, X.B. Xie, Y.X. Zeng, J.N. Shen, T. Kang, and J. Wang. 2011. Salinomycin inhibits osteosarcoma by targeting its tumor stem cells. *Cancer Lett*. 311:113-21.
202. Tao, L., A.L. Roberts, K.A. Dunphy, C. Bigelow, H. Yan, and D.J. Jerry. 2011. Repression of mammary stem/progenitor cells by p53 is mediated by Notch and separable from apoptotic activity. *Stem Cells*. 29:119-27.
203. Tateishi, K., E. Ashihara, S. Honsho, N. Takehara, T. Nomura, T. Takahashi, T. Ueyama, M. Yamagishi, H. Yaku, H. Matsubara, and H. Oh. 2007. Human cardiac stem cells exhibit mesenchymal features and are maintained through Akt/GSK-3beta signaling. *Biochem Biophys Res Commun*. 352:635-41.
204. Tavakoli, T., X.Xu, E. Derby, Y. Serebryakova, Y. Reid, M.S. Rao, M.P. Mattson, and W. Ma. 2009. Self-renewal and differentiation capabilities are variable between human embryonic stem cell lines 13, 16 and BG01V. *BMC Cell Biol*. 10:44.
205. Tesar, P.J., J.G. Chenoweth, F.A. Brook, T.J. Davies, E.P. Evans, D.L. Mack, R.L. Gardner, and R.D. McKay. 2007. New cell lines from mouse epiblast share defining features with human embryonic stem cells. *Nature*. 448:196-9.
206. Tian, X., and D.S. Kaufman. 2008. Hematopoietic development of human embryonic stem cells in culture. *Methods Mol Biol*. 430:119-33.
207. Tirino, V., V. Desiderio, R. d'Aquino, F. De Francesco, G. Pirozzi, A. Graziano, U. Galderisi, C. Cavaliere, A. De Rosa, G. Papaccio, and A. Giordano. 2008. Detection and characterization of CD133+ cancer stem cells in human solid tumours. *PLoS One*. 3:e3469.
208. Tirino, V., V. Desiderio, F. Paino, A. De Rosa, F. Papaccio, F. Fazioli, G. Pirozzi, and G. Papaccio. 2011. Human primary bone sarcomas contain CD133+ cancer stem cells displaying high tumorigenicity in vivo. *Faseb J*. 25:2022-30.
209. Todd, L.R., M.N. Damin, R. Gomathinayagam, S.R. Horn, A.R. Means, and U. Sankar. 2010. Growth factor erv1-like modulates Drp1 to preserve mitochondrial dynamics and function in mouse embryonic stem cells. *Mol Biol Cell*. 21:1225-36.
210. Toh, W.S., E.H. Lee, M. Richards, and T. Cao. 2010. In vitro derivation of chondrogenic cells from human embryonic stem cells. *Methods Mol Biol*. 584:317-31.
211. Toh, W.S., Z. Yang, B.C. Heng, and T. Cao. 2007. Differentiation of human embryonic stem cells toward the chondrogenic lineage. *Methods Mol Biol*. 407:333-49.
212. Tropel, P., J. Tournois, J. Come, C. Varela, C. Moutou, P. Fagner, M. Cailleret, Y. Laabi, M. Peschanski, and S. Viville. 2010. High-efficiency derivation of human embryonic stem cell lines following pre-implantation genetic diagnosis. *In Vitro Cell Dev Biol Anim*. 46:376-85.
213. Tsai, K.S., S.H. Yang, Y.P. Lei, C.C. Tsai, H.W. Chen, C.Y. Hsu, L.L. Chen, H.W. Wang, S.A. Miller, S.H. Chiou, M.C. Hung, and S.C. Hung. 2011. Mesenchymal stem cells promote formation of colorectal tumors in mice. *Gastroenterology*. 141:1046-56.

214. Tseng, S.Y., K.P. Nishimoto, K.M. Silk, A.s. Majumdar, G.N. Dawes, H. Waldmann, P.J. Fairchild, J. S. Lebkowski, and A. Reddy. 2009. Generation of immunogenic dendritic cells from human embryonic stem cells without serum and feeder cells. *Regen Med.* 4:513-26.
215. Ueno, S., G. Weidinger, T. Osugi, A.D. Kohn, J.L. Golob, L. Pabon, H. Reinecke, R.T. Moon, and C.E. Murry. 2007. Biphasic role for Wnt/beta-catenin signaling in cardiac specification in zebrafish and embryonic stem cells. *Proc Natl Acad Sci U S A.* 104:9685-90.
216. Ungrin, M.D., C. Joshi, A. Nica, C. Bauwens, and P.W. Zandstra. 2008. Reproducible, ultra high-throughput formation of multicellular organization from single cell suspension-derived human embryonic stem cell aggregates. *PLoS One.* 3:e1565.
217. Valamehr, B., S.J. Jonas, J. Polleux, R. Qiao, S. Guo, E.H. Gschwend, B. Stiles, K. Kam, T.J. Luo, O.N. Witte, X. Liu, B. Dunn, and H. Wu. 2008. Hydrophobic surfaces for enhanced differentiation of embryonic stem cell-derived embryoid bodies. *Proc Natl Acad Sci U S A.* 105:14459-64.
218. Varghese, M., H. Olstorn, J. Berg-Johnsen, M.C. Moe, W. Murrell, and I.A. Langmoen. 2009. Isolation of human multipotent neural progenitors from adult filum terminale. *Stem Cells Dev.* 18:603-13.
219. Vassiliev, I., S. Vassilieva, L.F. Beebe, S.J. Harrison, S.M. McIlfratrick, and M.B. Nottle. 2010. In vitro and in vivo characterization of putative porcine embryonic stem cells. *Cell Reprogram.* 12:223-30.
220. Vassiliev, I., S. Vassilieva, K.P. Truong, L.F. Beebe, S.M. McIlfratrick, S.J. Harrison, and M.B. Nottle. 2011. Isolation and in vitro characterization of putative porcine embryonic stem cells from cloned embryos treated with trichostatin A. *Cell Reprogram.* 13:205-13.
221. Vassilopoulos, A., R.H. Wang, C. Petrovas, D. Ambrozak, R. Koup, and C.X. Deng. 2008. Identification and characterization of cancer initiating cells from BRCA1 related mammary tumors using markers for normal mammary stem cells. *Int J Biol Sci.* 4:133-42.
222. Vazin, T., K.G. Becker, J. Chen, C.E. Spivak, C.R. Lupica, Y. Zhang, L. Worden, and W.J. Freed. 2009. A novel combination of factors, termed SPIE, which promotes dopaminergic neuron differentiation from human embryonic stem cells. *PLoS One.* 4:e6606.
223. Vazquez-Martin, A., C. Oliveras-Ferraro, S. Del Barco, B. Martin-Castillo, and J.A. Menendez. 2011. The anti-diabetic drug metformin suppresses self-renewal and proliferation of trastuzumab-resistant tumor-initiating breast cancer stem cells. *Breast Cancer Res Treat.* 126:355-64.
224. Vesuna, F., A. Lisok, B. Kimble, and V. Raman. 2009. Twist modulates breast cancer stem cells by transcriptional regulation of CD24 expression. *Neoplasia.* 11:1318-28.
225. Vijayaragavan, K., E. Szabo, M. Bosse, V. Ramos-Mejia, R.T. Moon, and M. Bhatia. 2009. Non-canonical Wnt signaling orchestrates early developmental events toward hematopoietic cell fate from human embryonic stem cells. *Cell Stem Cell.* 4:248-62.
226. Wallman, L., E. Akesson, D. Ceric, P.H. Andersson, K. Day, O. Hovatta, S. Falci, T. Laurell, and E. Sundstrom. 2011. Biogrid-a microfluidic device for large-scale enzyme-free dissociation of stem cell aggregates. *Lab Chip.* 11:3241-8. Epub 2011 Aug 17.
227. Wang, A., Z. Tang, I.H. Park, Y. Zhu, S. Patel, G.Q. Daley, and S. Li. 2011. Induced pluripotent stem cells for neural tissue engineering. *Biomaterials.* 32:5023-32.
228. Wang, D., D.L. Haviland, A.R. Burns, E. Zsigmond, and R.A. Wetsel. 2007. A pure population of lung alveolar epithelial type II cells derived from human embryonic stem cells. *Proc Natl Acad Sci U S A.* 104:4449-54.
229. Wang, H.S., J.F. Shyu, W.S. Shen, H.C. Hsu, T.C. Chi, C.P. Chen, S.W. Huang, Y.M. Shyr, K.T. Tang, and T.H. Chen. 2011. Transplantation of insulin-producing cells derived from umbilical cord stromal mesenchymal stem cells to treat NOD mice. *Cell Transplant.* 20:455-66.
230. Wang, S. 2009. Anchorage-independent growth of prostate cancer stem cells. *Methods Mol Biol.* 568:151-60.
231. Wang, Y. 2011. Effects of salinomycin on cancer stem cell in human lung adenocarcinoma A549 cells. *Med Chem.* 7:106-11.
232. Wang, Y., G. Chen, T. Song, G. Mao, and H. Bai. 2010. Enhancement of cardiomyocyte differentiation from human embryonic stem cells. *Sci China Life Sci.* 53:581-9.
233. Wang, Y., Y. Yu, A. Tsuyada, X. Ren, X. Wu, K. Stubblefield, E.K. Rankin-Gee, and S.E. Wang. 2010. Transforming growth factor-beta regulates the sphere-initiating stem cell-like feature in breast cancer through miRNA-181 and ATM. *Oncogene.* 30:1470-80.

234. Watanabe, K., M.J. Meyer, L. Strizzi, J.M. Lee, M. Gonzales, C. Bianco, T. Nagaoka, S.S. Farid, N. Margaryan, M.J. Hendrix, B.K. Vonderhaar, and D.S. Salomon. 2010. Cripto-1 is a cell surface marker for a tumorigenic, undifferentiated subpopulation in human embryonal carcinoma cells. *Stem Cells*. 28:1303-14.
235. Wei, Y., Y. Li, C. Chen, K. Stoelzel, A.M. Kaufmann, and A.E. Albers. 2011. Human skeletal muscle-derived stem cells retain stem cell properties after expansion in myosphere culture. *Exp Cell Res*. 317:1016-27.
236. Wilson, H., M. Huelsmeyer, R. Chun, K.M. Young, K. Friedrichs, and D.J. Argyle. 2008. Isolation and characterisation of cancer stem cells from canine osteosarcoma. *Vet J*. 175:69-75.
237. Wu, T., H. Wang, J. He, L. Kang, Y. Jiang, J. Liu, Y. Zhang, Z. Kou, L. Liu, X. Zhang, and S. Gao. 2011. Reprogramming of trophoblast stem cells into pluripotent stem cells by Oct4. *Stem Cells*. 29:755-63.
238. Wu, Y., C. Ge, W. Zeng, and C. Zhang. 2010. Induced multilineage differentiation of chicken embryonic germ cells via embryoid body formation. *Stem Cells Dev*. 19:195-202.
239. Wu, X., M.W. Lensch, J. Wylie-Sears, G.Q. Daley, and J. Bischoff. 2007. Hemogenic endothelial progenitor cells isolated from human umbilical cord blood. *Stem Cells*. 25:2770-6.
240. Wyatt, T.J., S.L. Rossi, M.M. Siegenthaler, J. Frame, R. Robles, G. Nistor, and H.S. Keirstead. 2011. Human motor neuron progenitor transplantation leads to endogenous neuronal sparing in 3 models of motor neuron loss. *Stem Cells Int*. 2011:207230.
241. Xi, J., Y. Wang, P. Zhang, L. He, X. Nan, W. Yue, and X. Pei. 2010. Human fetal liver stromal cells that overexpress bFGF support growth and maintenance of human embryonic stem cells. *PLoS One*. 5:e14457.
242. Xie, C.Q., Y. Jeong, M. Fu, A.L. Bookout, M.T. Garcia-Barrio, T. Sun, B.H. Kim, Y. Xie, S. Root, J. Zhang, R.H. Xu, Y.E. Chen, and D.J. Mangelsdorf. 2009. Expression profiling of nuclear receptors in human and mouse embryonic stem cells. *Mol Endocrinol*. 23:724-33.
243. Xie, X., A. Hiona, A.S. Lee, F. Cao, M. Huang, Z. Li, A. Cherry, X. Pei, and J.C. Wu. 2010. Effects of long-term culture on human embryonic stem cell aging. *Stem Cells Dev*. 20:127-38.
244. Xu, X.Q., R. Zweigerdt, S.Y. Soo, Z.X. Ngoh, S.C. Tham, S.T. Wang, R. Graichen, B. Davidson, A. Colman, and W. Sun. 2008. Highly enriched cardiomyocytes from human embryonic stem cells. *Cytotherapy*. 10:376-89.
245. Xue, H., S. Wu, S.T. Papadeas, S. Spusta, A.M. Swistowska, C.C. MacArthur, M.P. Mattson, N.J. Maragakis, M.R. Capecchi, M.S. Rao, X. Zeng, and Y. Liu. 2009. A targeted neuroglial reporter line generated by homologous recombination in human embryonic stem cells. *Stem Cells*. 27:1836-46.
246. Yamauchi, K., K. Hasegawa, S. Chuma, N. Nakatsuji, and H. Suemori. 2009. In vitro germ cell differentiation from cynomolgus monkey embryonic stem cells. *PLoS One*. 4:e5338.
247. Yang, J., G.Q. Liu, R. Wei, W.F. Hou, M.J. Gao, M.X. Zhu, H.N. Wang, G.A. Chen, and T.P. Hong. 2011. Ghrelin promotes differentiation of human embryonic stem cells into cardiomyocytes. *Acta Pharmacol Sin*. 32:1239-45. doi: 10.1038/aps2011.79. Epub 2011 Aug 1.
248. Yip, N.C., I.S. Fombon, P. Liu, S. Brown, V. Kannappan, A.L. Armesilla, B. Xu, J. Cassidy, J.L. Darling, and W. Wang. 2011. Disulfiram modulated ROS-MAPK and NFkappaB pathways and targeted breast cancer cells with cancer stem cell-like properties. *Br J Cancer*. 104:1564-74.
249. Yoon, E., S. Dhar, D.E. Chun, N.A. Gharibjanian, and G.R. Evans. 2007. In vivo osteogenic potential of human adipose-derived stem cells/poly lactide-co-glycolic acid constructs for bone regeneration in a rat critical-sized calvarial defect model. *Tissue Eng*. 13:619-27.
250. Yu, C., Y. Liu, Z. Miao, M. Yin, W. Lu, Y. Lv, M. Ding, and H. Deng. 2010. Retinoic acid enhances the generation of hematopoietic progenitors from human embryonic stem cell-derived hemato-vascular precursors. *Blood*. 116:4786-94.
251. Yu, F., J. Li, H. Chen, J. Fu, S. Ray, S. Huang, H. Zheng, and W. Ai. 2011. Kruppel-like factor 4 (KLF4) is required for maintenance of breast cancer stem cells and for cell migration and invasion. *Oncogene*. 30:2161-72.
252. Yu, J., N.F. Huang, K.D. Wilson, J.B. Velotta, M. Huang, Z. Li, A. Lee, R.C. Robbins, J.P. Cooke, and J.C. Wu. 2009. nAChRs mediate human embryonic stem cell-derived endothelial cells: proliferation, apoptosis, and angiogenesis. *PLoS One*. 4:e7040.

253. Zhang, J., G.F. Wilson, A.G. Soerens, C.H. Koonce, J. Yu, S.P. Palecek, J.A. Thomson, and T.J. Kamp. 2009. Functional cardiomyocytes derived from human induced pluripotent stem cells. *Circ Res.* 104:e30-41.
254. Zhang, Q., T. Yamaza, A.P. Kelly, S. Shi, S. Wang, J. Brown, L. Wang, S.W. French, and A.D. Le. 2009. Tumor-like stem cells derived from human keloid are governed by the inflammatory niche driven by IL-17/IL-6 axis. *PLoS One.* 4:e7798.
255. Zhou, J., P. Su, D. Li, S. Tsang, E. Duan, and F. Wang. 2010. High-efficiency induction of neural conversion in human ESCs and human induced pluripotent stem cells with a single chemical inhibitor of transforming growth factor beta superfamily receptors. *Stem Cells.* 28:1741-50.
256. Zhou, L., W. Wang, Y. Liu, J.F. de Castro, T. Ezashi, B.P. Telugu, R.M. Roberts, H.J. Kaplan, and D.C. Dean. 2011. Differentiation of induced pluripotent stem cells of Swine into rod photoreceptors and their integration into the retina. *Stem Cells.* 29:972-80.
257. Zhu, M.X., J.Y. Zhao, G.A. Chen, and L. Guan. 2011. Early embryonic sensitivity to cyclophosphamide in cardiac differentiation from human embryonic stem cells. *Cell Biol Int.* 35:927-38.
258. Zielske, S.P., A.C. Spalding, M.S. Wicha, and T.S. Lawrence. 2011. Ablation of breast cancer stem cells with radiation. *Transl Oncol.* 4:227-33.
259. Zimmermann, C.E., M. Gierloff, J. Hedderich, Y. Acil, J. Wiltfang, and H. Terheyden. 2011. Survival of transplanted rat bone marrow-derived osteogenic stem cells in vivo. *Tissue Eng Part A.* 17:1147-56.
260. Zou, J., X.F. Yu, Z.J. Bao, and J. Dong. 2011. Proteome of human colon cancer stem cells: a comparative analysis. *World J Gastroenterol.* 17:1276-85.

For additional product or technical information, please visit www.corning.com/lifesciences or call 1.800.492.1110. Customers outside the United States, please call +1.978.442.2200 or contact your local Corning sales office listed below.

CORNING

Corning Incorporated *Life Sciences*

Tower 2, 4th Floor
900 Chelmsford St.
Lowell, MA 01851
t 800.492.1110
t 978.442.2200
f 978.442.2476

www.corning.com/lifesciences

Worldwide Support Offices

ASIA / PACIFIC

Australia/New Zealand
t 0402-794-347

China
t 86 21 2215 2888
f 86 21 6215 2988

India
t 91 124 4604000
f 91 124 4604099

Japan

t 81 3-3586 1996
f 81 3-3586 1291

Korea

t 82 2-796-9500
f 82 2-796-9300

Singapore

t 65 6733-6511
f 65 6861-2913

Taiwan

t 886 2-2716-0338
f 886 2-2516-7500

EUROPE

France

t 0800 916 882
f 0800 918 636

Germany

t 0800 101 1153
f 0800 101 2427

The Netherlands

t 31 20 655 79 28
f 31 20 659 76 73

United Kingdom

t 0800 376 8660
f 0800 279 1117

All Other European Countries

t 31 (0) 20 659 60 51
f 31 (0) 20 659 76 73

LATIN AMERICA

Brasil

t (55-11) 3089-7419
f (55-11) 3167-0700

Mexico

t (52-81) 8158-8400
f (52-81) 8313-8589