

CORNING

Closure System 2-Type Cover (505 ISG)

P/N 78-8140-1010-0
Issue 2

related literature | Search [corning.com/opcomm](https://www.corning.com/opcomm). Click on "Resources/Standard Recommended Procedures."

INSTALLATION INSTRUCTIONS

1.0 CLOSURE KIT 2-TYPE CONTENTS



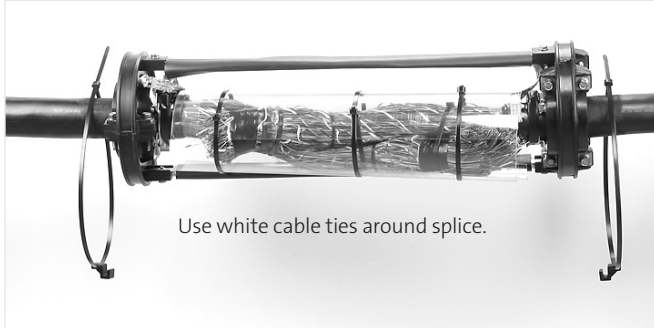
A.	Cover Halves – Front & Back*
B.	Splice Wrap
C.	White Cable Ties for use around splice bundle and wrap
D.	External Ground Ribbon
E.	Back Cover Clips
F.	Cleaning Wipes CSSC20
G.	Dry Towelette Wipe DTW
H.	Protective Gloves
I.	Pressure Valve and Continuity Connectors
J.	Alignment Bars
K.	Alignment Bar Mounting and Ground Hardware
L.	Bond Braid w/ Eyelits
M.	Keps Nuts for use with Continuity Connectors
N.	Flanged Hex Nut for external bonding/grounding
O.	Sealing Gasket - Endplate to Cover SGB
P.	Cover Release Wipe
Q.	Black Cable Ties for use with back cover clips

A* Sealing Gasket installed in back cover half.

Note: Visually inspect all components. If any component is missing or appears damaged, do not install. Call Corning Customer Care at 800-743-2675 for a replacement product.

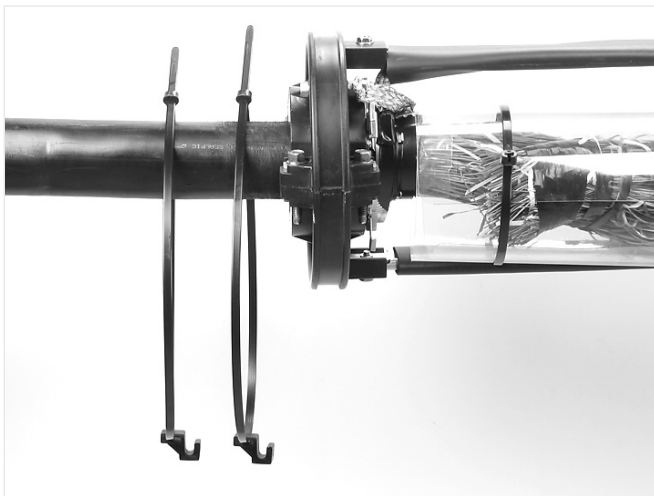
2.0 COVER INSTALLATION - USING INSTALLED SEALING GASKET SEALING MATERIAL - ISG

2.1 Use the white cable ties to install the splice wrap. Loosely attach the back cover clip with the provided cable tie. Insure that the hook is facing the splice area. Repeat at the opposite end.



Use black cable ties with back cover clips

Note: Larger diameter covers may require two back cover clips per end.



2.2 Clean the endplate outer sealing surface using the Cleaning Wipes CSSC20. Repeat at the opposite end.



2.3 Clean all sealing surfaces of the front cover and endplate sealing surfaces of the back cover with Dry Towelette Wipes DTW. Repeat for the second cover half.



2.4 Wipe the endplate sealing channel on the front cover half (the cover half with the bolts) with the Cover Release Wipe CRW provided. Repeat at the opposite cover end. **Do not wipe narrow sealing channels.**

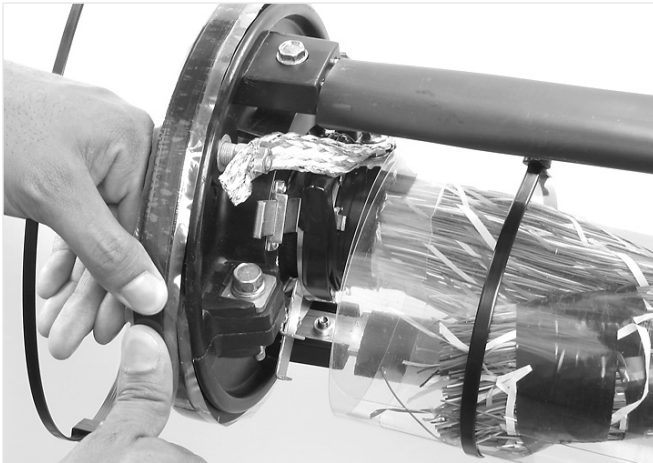
Note: Carefully follow safety, health, and environmental information given on product label or the Safety Data Sheet (SDS).



2.4 Cut the leading edge of the Sealing Tape RTE at a 45° angle.



2.5 Apply the Sealing Gasket SGB to the endplate with the liner in place. This helps to prevent stretching of the gasket material.



2.6 Press fit the leading and trailing edges of the material. This should leave an indentation in the material.

2.7 Cut the end of the material to match the starting angle.

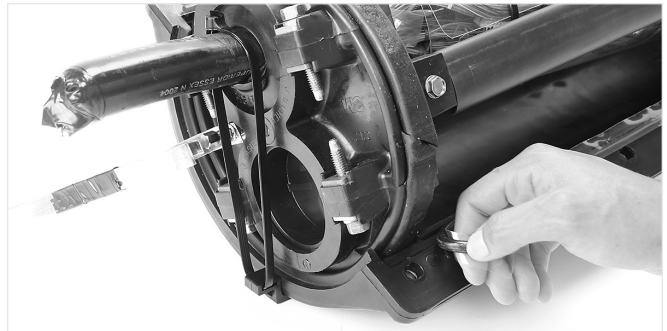


2.8 Remove the liner from the SGB sealing gasket.



2.9 Hold the back cover half in-place while securing the back cover clips. Pull the cable tie tight. Repeat at the opposite end.

Note: Take care not to pinch the Sealing Gasket SGR between the endplate and cover half.



2.10 Remove the liner from the ISG installed sealing gasket.



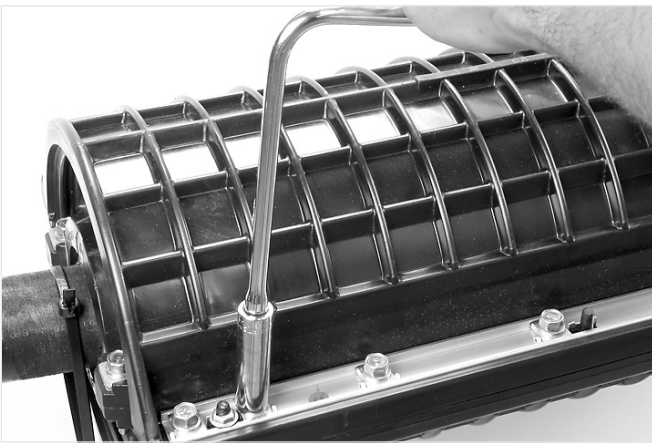
2.11 Seat front cover.



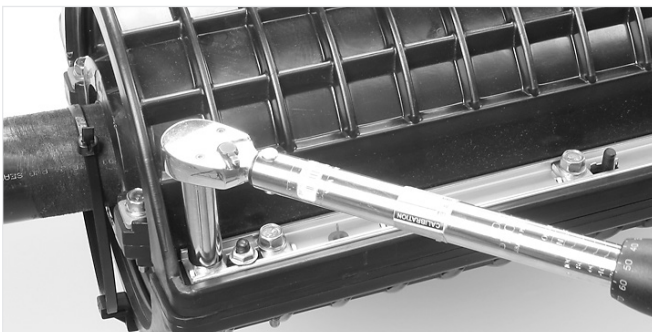
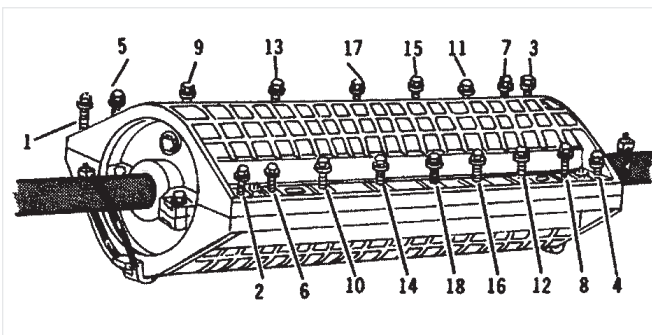
2.12 Hand start all bolts beginning at the bolt located in the second position from the closure end. Repeat on all four corners.



2.13 Evenly fasten all bolts. This may be done using a speed wrench.



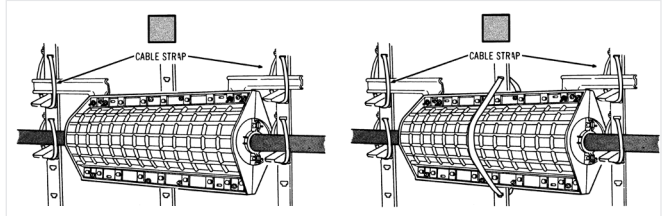
2.14 Torque all bolts to 250 in-lbs or 20.8 ft-lbs (28.8 kgm) in a sequence moving from the outer bolts toward the center bolt.



2.15 Wait five minutes, then using the same torque sequence, re-torque all bolts to 250 in-lbs or 20.8 ft-lbs (28.8 kgm).

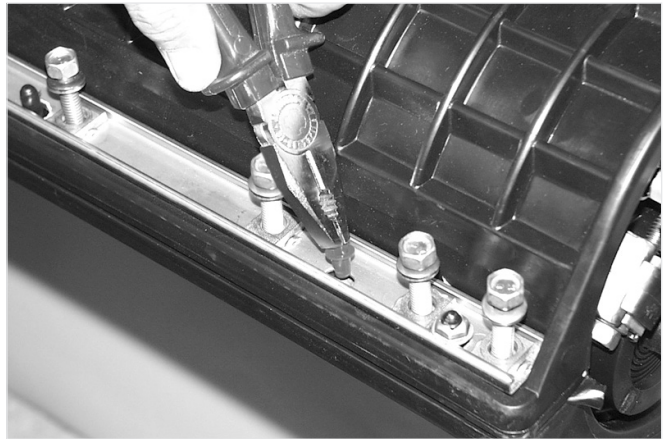
2.16 PRESSURE TEST CLOSURE TO A MAXIMUM PRESSURE OF 20 PSI (1.4 BARS) FOR 30 MINUTES. MAINTAIN APPROXIMATELY 10 PSI (0.7 BAR) CONTINUOUS OPERATING PRESSURE.

Note: Closure cables must be secured to racking with cable ties correctly to prevent the closure from floating up and placing stress on closure endplates.

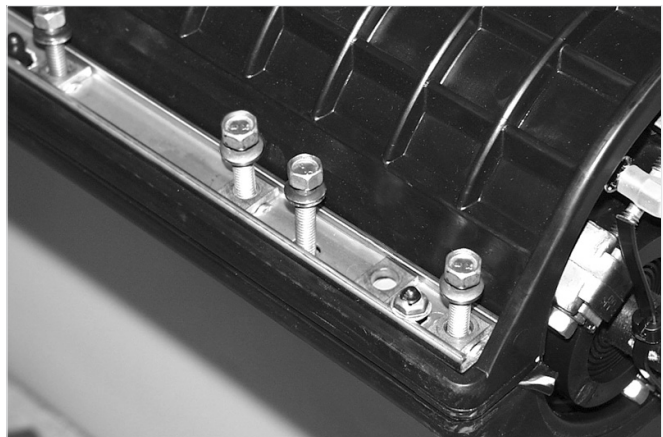


3.0 CLOSURE RE-ENTRY

3.1 RELEASE AIR PRESSURE. Loosen all bolts. Remove the red plugs from the jacking positions located between the second and third bolt from each end.



3.2 Insert the long corner bolts in all four jacking positions between the second and third bolt from each end.



3.3 Evenly drive the four jacking bolts using a “crossing” pattern.

Note: Do not rush removing the covers. When slowly engaging the bolts, the re-enterable sealing material will tend to release from the cover easier than using a quick, jerking process.



3.4 Remove the front cover.

Note: If removal of the back cover is necessary, use a splicer's knife or snips to cut the Sealing Gasket SGR at a 45° angle between the second and third bolt locations inboard of the end plates. Next, remove the back cover clips by cutting the cable ties attached to the cables.

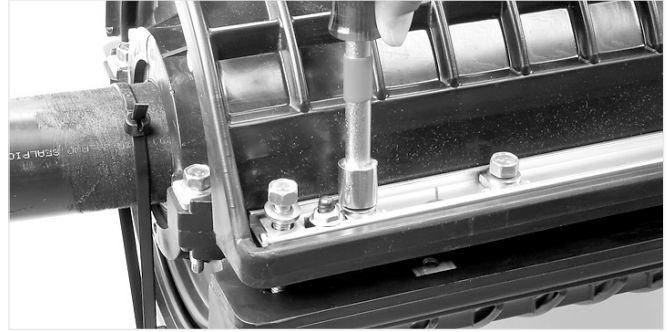


3.5 Replace all bolts in the cover and reseat the cover on the base.

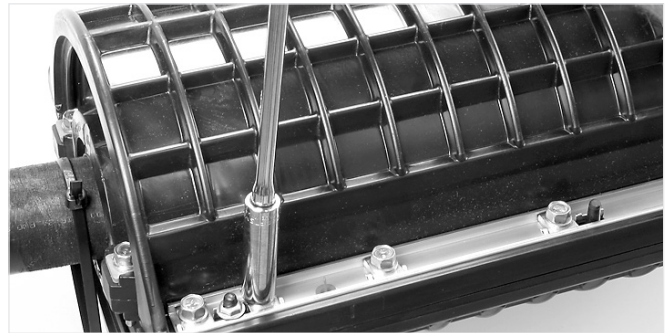
Note: When reinstalling the back cover, place the cover in its original position while reattaching the back cover slips. Next, press fit the previously cut sealing gasket together.



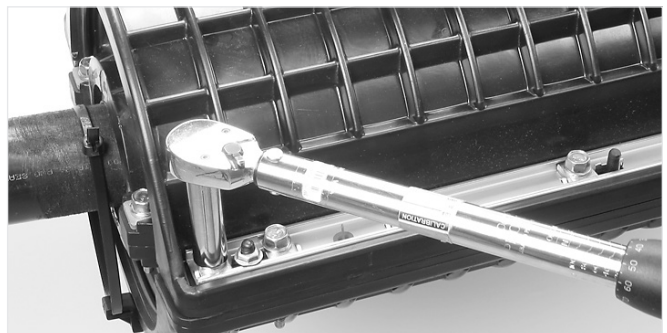
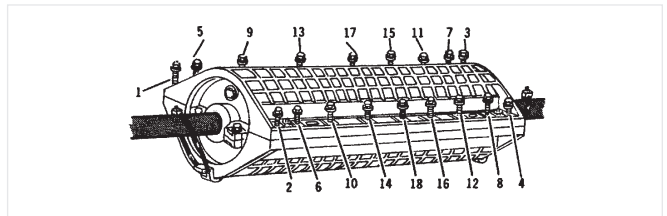
3.6 Hand start all bolts beginning at the bolt located in the second position from the closure end. Repeat on all four corners.



3.7 Evenly fasten all bolts. This may be done using a speed wrench.



3.8 Torque all bolts to 250 in-lbs or 20.8 ft-lbs (28.8 kgm) in a sequence moving from the outer bolts toward the center bolt.



3.9 Wait five minutes, then using the same torque sequence, re-torque all bolts to 250 in-lbs or 20.8 ft-lbs (28.8 kgm).

3.10 PRESSURE TEST CLOSURE TO A MAXIMUM PRESSURE OF 20 PSI (1.4 BARS) FOR 30 MINUTES. MAINTAIN APPROXIMATELY 10 PSI (0.7 BAR) CONTINUOUS OPERATING PRESSURE.

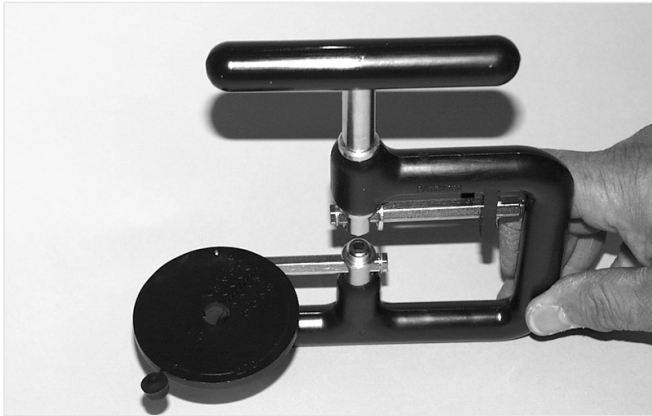
4.0 ACCESSORIES



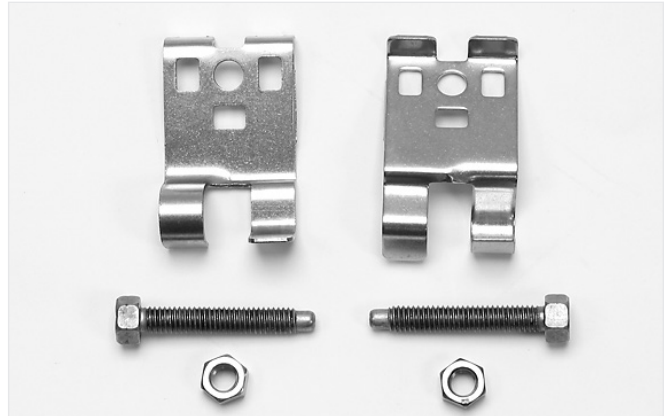
4.1 Closure Tool Kit 2-Type
Part Number: 2-Type/TK



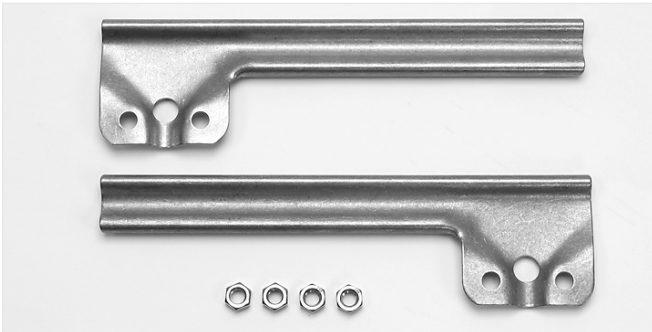
4.2 Alignment Bar Kit 2-Type
Part Number: 2A-Align, 2-B Align, and 2C-Align



4.3 Closure Washer Cutter Tool 2-Type
Part Number: WCT11K



4.4 Closure Aerial Hanger Kit 2-Type
Part Number: AH20K



4.5 Underground Closure 2-Type Support Kit
Part Number: UCS10K



4.6 Universal Alignment Tool Kit
Part Number: UAT20K



4.7 4-Hole Spool Kit
Part Number: KWSP04

COVER SIZE FOR STRAIGHT SPLICES

Pair Size (Gauge)	25 Pair Modular in Line				25 Pair Modular Foldback		
	1 Bank	2 Bank	3 Bank	4 Bank	2 Bank	3 Bank	4 Bank
200-26	2A2AA	2A2A	2B2B	2B2C	2A2A	2B2B	2B2C
200-24	↑	↑	↑	↑	↑	↑	↑
200-22	↑	↑	↑	↑	↑	↑	↑
300-26	↓	↓	↓	↓	↓	↓	↓
300-24	↓	↓	↓	↓	↓	↓	↓
300-22	↓	↓	↓	↓	↓	↓	↓
400-26	↓	↓	↓	↓	↓	↓	↓
400-24	2A2AA	↓	↓	↓	↓	↓	↓
400-22	2B2AA	↓	↓	↓	↓	↓	↓
600-26	↑	↓	↓	↓	↓	↓	↓
600-24	↑	↓	↓	↓	2A2A	↓	↓
600-22	↑	↓	↓	↓	2B2A	↓	↓
900-26	↓	2A2A	↓	↓	↑	↓	↓
900-24	↓	2B2A	↓	↓	↓	↓	↓
900-22	2B2AA	↑	↓	↓	2B2A	↓	↓
1200-26	2C2A	↑	↓	↓	2C2A	↓	↓
1200-24	↑	↑	↓	↓	↑	↓	↓
1200-22	↑	↓	↓	↓	↑	↓	↓
1500-26	↓	↓	↓	↓	↓	↓	↓
1500-24	2C2A	2B2A	↓	↓	↓	↓	↓
1800-26	2D2A	2C2A	↓	↓	↓	↓	↓
1800-24	◆	↑	↓	↓	↓	2B2B	↓
2100-26	2D2A	↑	↓	↓	↓	2C2B	↓
2100-24	2E2A	↓	2B2B	↓	2C2A	↑	2B2C
2400-26	◆	2C2A	2C2B	↓	2D2A	↓	2C2C
2700-26	2E2A	2D2A	↑	2B2C	↑	2C2B	2D2C
3000-26		↑	↑	2C2C	↓	2D2B	↑
3300-26		↓	↓	↑	↓	↑	↓
3600-26	NR	↓	↓	↑	2D2A	↑	↓
3900-26		2D2A	2C2B	↓	2E2A	↓	↓
4200-26		2E2A	2D2B	2C2C	2E2A	2D2B	2D2C

NR - Not Recommended