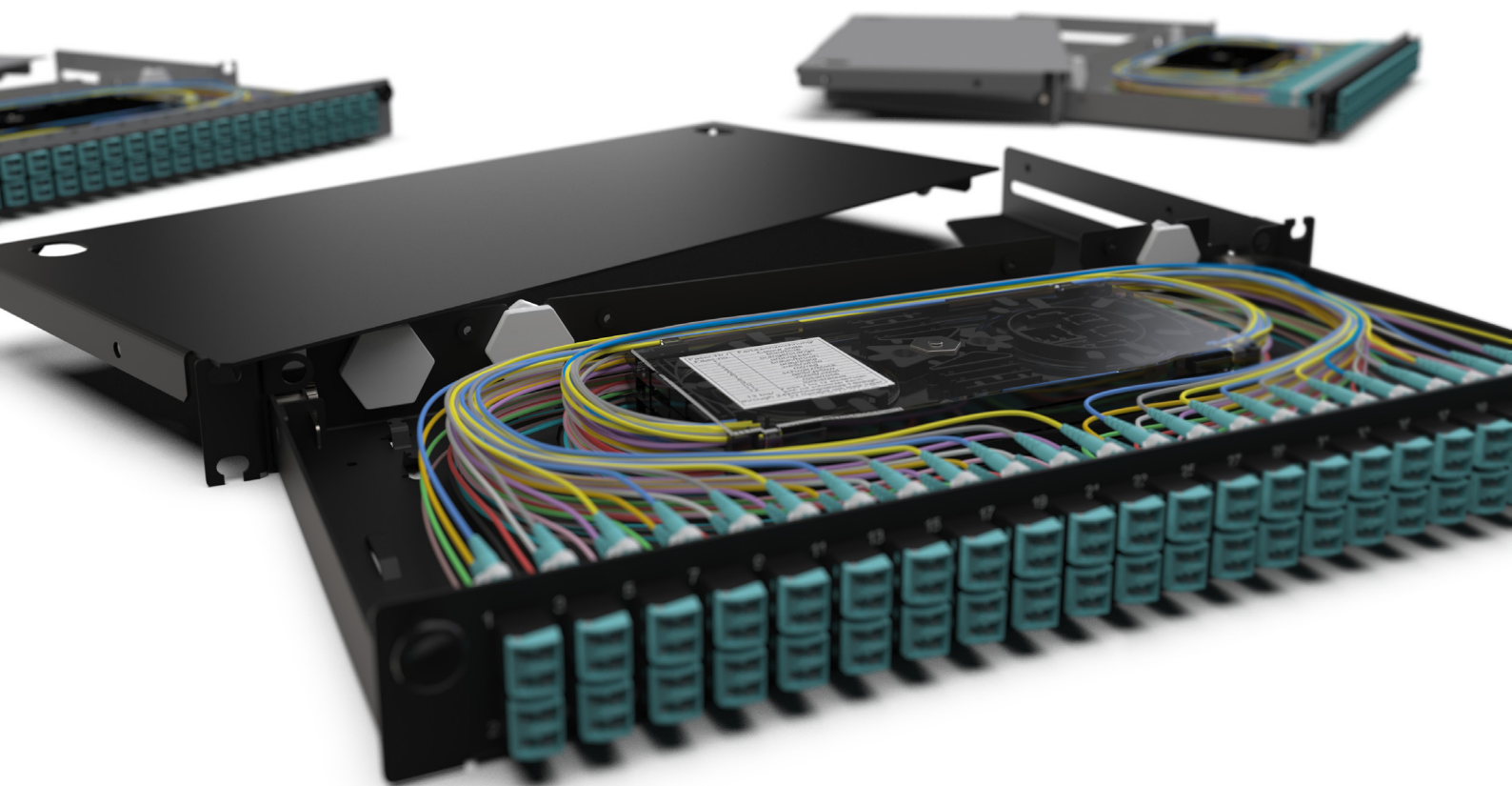


CORNING

Everon[®] LAN1 Fibre Housing



Introduction

Our Everon® LAN1 Fibre Housings are designed to fulfill all your connectivity needs in any enterprise cabling installation that is based in a 19-inch rack. Whether you have to cable a building backbone, a small to medium-sized campus network or even a low density distribution frame, the LAN1 Fibre Housings always offer the right answer. The three basic options of the product family give you flexibility and offer a panel for every installation:

- Equipped with adapters and splice packs for maximum protection and easy segregation of fibres the fully loaded housing option is ready for fusion splicing.
- The housing variation with adapters and splice bridge offers an economic alternative for fusion splicing applications, saving time while routing and splicing the fibres inside the housing.
- For a low fibre count installation with either pre-terminated assemblies or using UniCam® NPC+ or FuseLite® 2 connectors for field termination. The housing comes with a front panel including adapters that match your choice of connectivity. Accessories for pre-terminated assemblies or Plug & Play™ or EDGE™ solutions trunks and FTTD/FTTO applications have to be ordered separately.



Everon LAN1 Fibre Housing, 48 Fibres with Splice Pack

Contents

Everon® LAN1 Fibre Housing 4

Ordering Information 5

Field Termination 6

Splice Packs 7

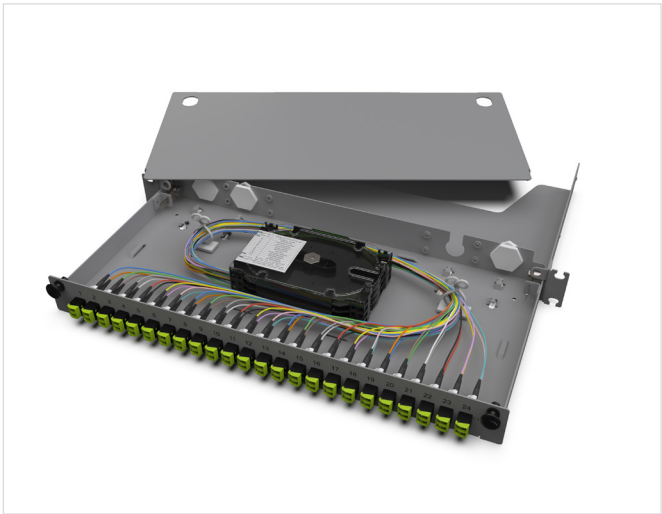
Everon LAN1 Housing and Multifibre Cable Assemblies 8

Everon LAN1 Housing – Hybrid 10

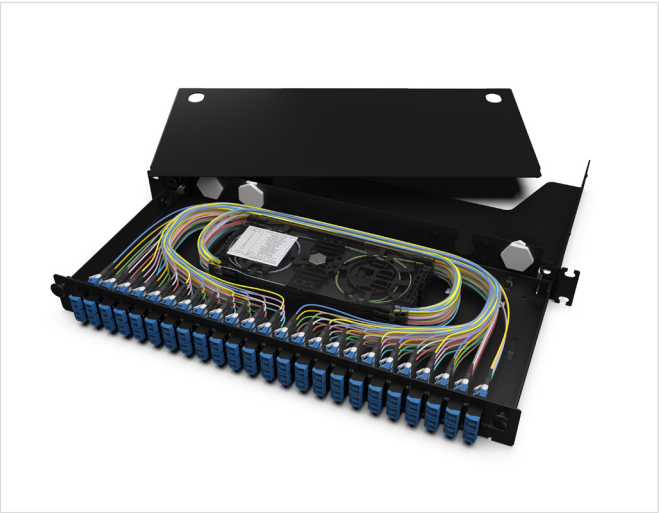
Accessories 12



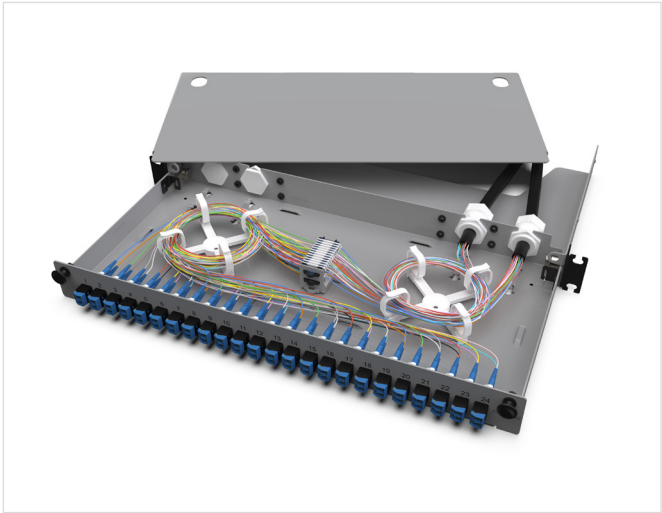
Everon LAN1 Fibre Housing, 36 Fibres with Adapters



Everon LAN1 Fibre Housing, 48 Fibres with Splice Pack

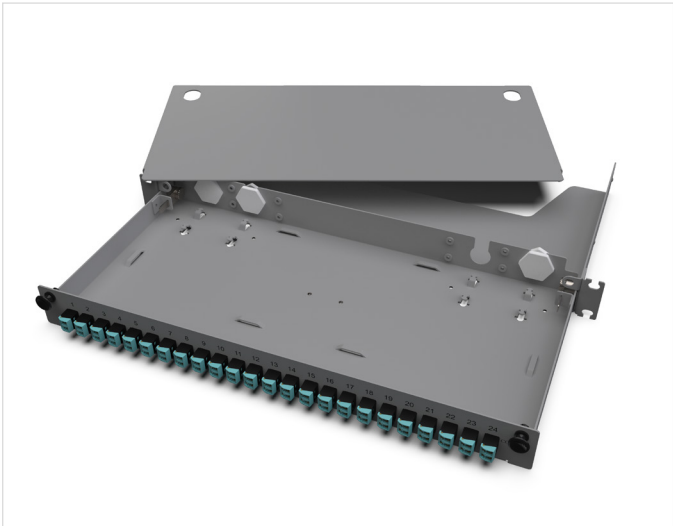


Everon LAN1 Fibre Housing, 96 Fibres with MFT Splice Cassette



Everon LAN1 Fibre Housing, 48 Fibres Stackable Splicing Bridge

Everon® LAN1 Fibre Housing



Everon LAN1 Fibre Housing, 48 Fibres with Adapters



Everon LAN1 Fibre Housing, 24 Fibres with Splice Pack

Features and Benefits

Easy to remove top cover

No tools needed

Housing made of aluminium

Lightweight, but robust

Quick-mount feature

Allows single-person mounting of housing

Splice capacity of up to 96 fibres in 1U

Segmentation of fusion splices with splice packs of 12 fibres each or cassettes with 24 fibres each

Accommodate different termination methods

Pigtail splicing, field connectorisation, pre-terminated cables, Plug & Play™ or EDGE™ trunks can be installed in the same housing

Adapters with ceramic inserts and LC duplex with shutters

Minimal insertion loss and clean connectors

Low installation depth

Mountable in shallow cabinets or racks

Available in black or grey

Colour can be chosen to best suit the application

Multiple labelling options

Port numbering above adapter or customised labels

Grounding Prepared

Grounding preparation for entire housing, including front panel

900 µm pigtails and 250 µm fibre are Telcordia colour-coded that reduce installation time during fibre identification

Pigtails are pre-stripped to 250 µm and pre-routed for configurations with splice trays

900 µm TB (Easy Strip) – reduces stripping time

Ordering Information			
Part Number	Height (unit)	Housing Colour	Dimensions (W x D x H)
Everon LAN1 Fibre Housing	1U	Black	483 x 233 x 44 mm
Everon LAN1 Fibre Housing	1U	Grey	483 x 233 x 44 mm



Scan or click the QR code to watch our LAN 1 installation video.

Everon® LAN1 Fibre Housing – Ordering Information

LAN1 - - -

1
2
3
4

1 Select fibre count.

04 = 4 fibres*
 06 = 6 fibres*
 08 = 8 fibres*
 12 = 12 fibres*
 24 = 24 fibres*
 36 = 36 fibres*
 48 = 48 fibres* (up to 48 use ADPT or PGTL configuration)
 72 = 72 fibres (LC only with HDHS, HDCR, ADPT or BRDG configuration)
 96 = 96 fibres (LC only with HDHS, HDCR, ADPT or BRDG configuration)
 E4 = 144 fibres (MTP® only for ADPT)[†]
 U8 = 288 fibres (MTP only for ADPT)[†]

*Suitable for all adapter types with universal splice cassette kit (heat-shrink/crimp) including 12 pigtails and cover

[†]Not a standard product, please contact your local sales representative

2 Select connectivity.

AY = Shuttered LC Duplex MM/OM5, lime green
 AD = Shuttered LC Duplex MM/OM3+OM4, aqua
 AV = Shuttered LC Duplex MM/OM4, violet
 AE = Shuttered LC Duplex UPC SM/OS2, blue
 AF = Shuttered LC Duplex APC SM/OS2, green
 BQ = SC Duplex MM/OM5, lime green
 E7 = SC Duplex MM/OM3+OM4, aqua
 72 = SC Duplex UPC SM/OS2, blue
 D9 = SC Duplex APC SM/OS2, green
 5C = SC Simplex UPC SM/OS2, blue
 6C = SC Simplex APC SM/OS2, green
 E5 = ST® compatible MM/OM3+OM4, aqua ring
 19 = ST compatible UPC SM/OS2, blue ring
 11 = FC SM/OS2, metal
 L1 = LSH APC/OS2, green
 L2 = LSH UPC/OS2, blue,
 L4 = LSH UPC/MM/OM4/OM3, aqua
 L5 = LSH UPC/OM5, lime green
 E3 = MTP, MM/OM3,OM4, aqua[†]
 90 = MTP APC, SM/OS2, black[†]

[†]Not a standard product, please contact your local sales representative

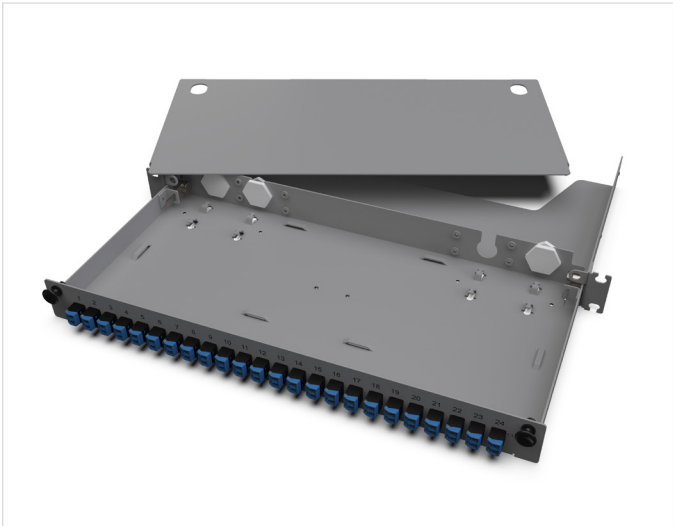
3 Select configuration option.

ADPT = Front panel loaded with adapters only (Breakout version)
 PGTL = Universal splice pack with 12 pre-installed coloured pigtails (up to 48 fibres), (protectors not included)
 HDHS = MFT splice tray for up to 24 heat-shrink splice protectors with 24 pre-installed coloured pigtails (protectors not included)
 HDCR = MFT splice cassette for up to 24 crimp splice protectors with 24 pre-installed coloured pigtails (protectors not included)
 BRDG = Stackable splice bridge for up to 96 splices and easy loose tube or pigtail management with pre-installed coloured pigtails (protectors not included)

4 Select housing colour.

B = Black
 G = Grey

Field Termination with Corning Field-Installable Connectors or Pre-terminated Assemblies



Everon LAN1 Fibre Housing, 48 fibres with adapters

Partially loaded panels (or Breakout versions) are available with LC, SC, ST® compatible or LSH connector interface and come equipped with fibre adapters. They are ideal for direct termination with UniCam® NPC+ or FuseLite® 2 connectors or fusion splicing with the help of the Corning splice packs.

For details on the field-installable connectors, we have an extensive [resource centre online](#), that provides helpful information on installation methods, technical resources, videos and links to the products in the online catalogue, accessible [here](#).

Everon® LAN1 Fibre Housings offer the possibility to use different additional accessories for cable strain-relief to be placed at the back of the housing to enable the use of:

- Pre-terminated cable assemblies, such as connectorised MIC™ or Breakout Tight Buffer cables
- Plug & Play™ or EDGE™ Solutions trunks
- Direct termination on low-fibre-count tight-buffered cables

Sample Bill of Materials

Part Number	Product Description	Amount	Unit
LAN1-12E7-ADPT-B	1U Everon LAN1 Fibre Housing, 12 Fibres, SC Duplex MM/OM3/4	1	pcs
O12T8X-32188E2G	12x MM/OM3 FREEDM™ Tight Buffer Indoor/Outdoor Cable Dca-s1a, d1, a1	250	m
95-050-41-X	SC MM/OM3 UniCam® High-Performance Connector	12	pcs
Toolkit Recommended			
TKT-UNICAM-PFC	UniCam™ High-Performance Toolkit	1	pcs



UniCam Connectors and High-Performance UniCam Toolkit

Splice Packs



LC SM/OS2 Universal Splice Pack

Universal Everon® LAN1 Splice Packs are suitable for Everon LAN1 Fibre Housings which provide up to 96-fibre (48-port) capacity for LC duplex and 48-fibre (24-port) capacity for SC duplex or ST® compatible connectivity.

The easiest combination when fusion splicing is using a gel-free 250 µm cable, such as the FREEDM™ gel-free Indoor/Outdoor cable.

Everon LAN1 Fibre Housings offer the possibility to use different additional accessories for cable strain-relief to be placed at the back of the housing to enable the use of:

- Splice packs include 12 pigtails of 900 µm TB (Easy Strip 150 cm) fibres pre-stripped to 250 µm
- Fibres are Telcordia colour-coded on both 900 µm and 250 µm layers
- Pigtails are 2-metres in length
- Splice packs are delivered with transparent cover and both heat-shrink and crimp splice organiser

Ordering Information

Part Number	Product Description
SP12-03Q-S8	LC MM/OM4 Universal Splice Pack (heat-shrink/crimp) including 12 pigtails and cover
SP12-03Q-S8-V	LC MM/OM4 Universal Splice Pack (heat-shrink/crimp) including 12 pigtails and cover, violet boots
SP12-03T-S8	LC MM/OM3 Universal Splice Pack (heat-shrink/crimp) including 12 pigtails and cover
SP12-02R-S8	LC SM/OS2 Universal Splice Pack (heat-shrink/crimp) including 12 pigtails and cover
SP12-39Q-S8	SC MM/OM4 Universal Splice Pack (heat-shrink/crimp) including 12 pigtails and cover
SP12-39T-S8	SC MM/OM3 Universal Splice Pack (heat-shrink/crimp) including 12 pigtails and cover
SP12-58R-S8	SC SM/OS2 Universal Splice Pack (heat-shrink/crimp) including 12 pigtails and cover
SP12-50T-S8	ST MM/OM3 Universal Splice Pack (heat-shrink/crimp) including 12 pigtails and cover
SP12-61R-S8	ST SM/OS2 Universal Splice Pack (heat-shrink/crimp) including 12 pigtails and cover

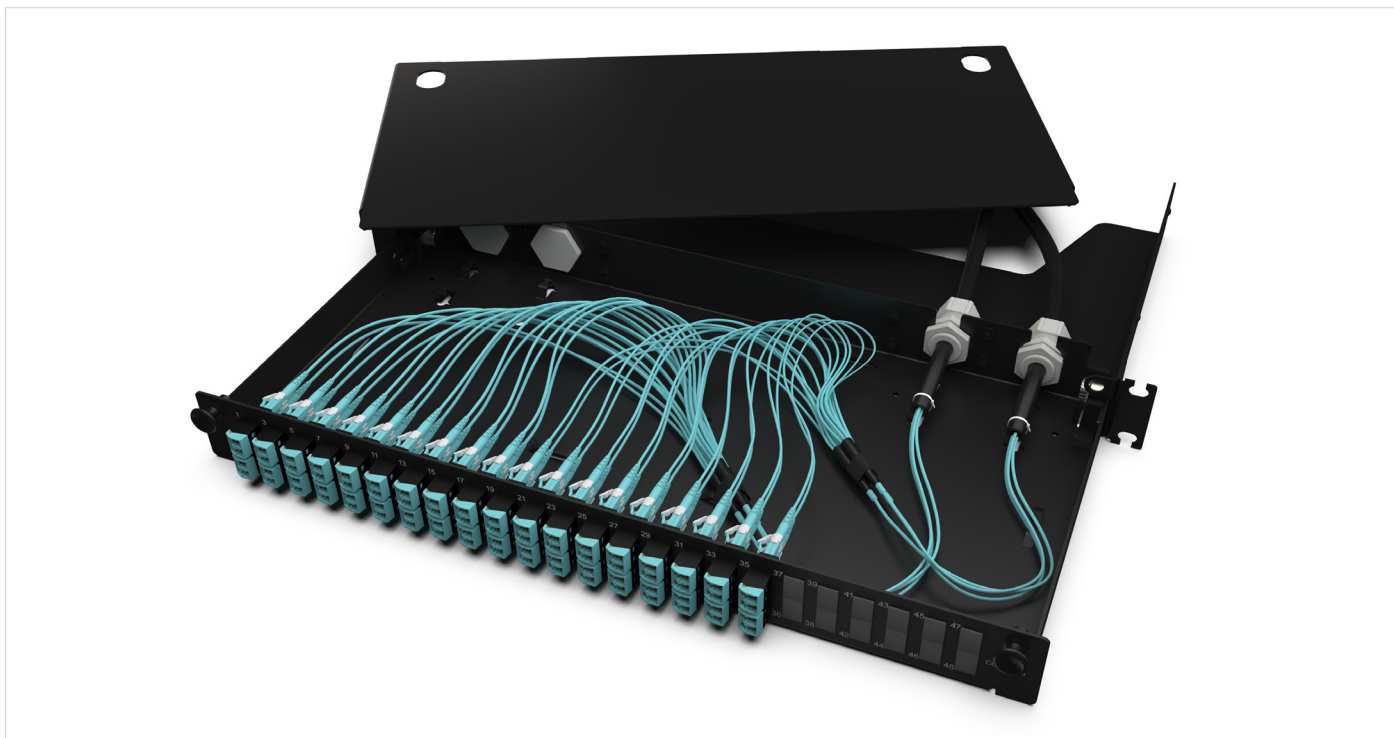
LAN1 Housing and Multifibre Cable Assemblies

Corning's pre-terminated multifibre assemblies use high-quality Corning® ClearCurve® multimode fibres to withstand tight bends and challenging cabling routes with substantially less signal loss than conventional multimode fibre. Corning® SMF-28® Ultra single-mode fibres combine industry-leading attenuation and improved macrobend performance.

As the industry's leading supplier of fibre, our state-of-the-art manufacturing process for cable assemblies ensures unsurpassed fibre and connector performance that meets and exceeds industry standards for connector reflectance and insertion loss. Low-loss connectivity enables system design flexibility for your application.

Reverse polarity LC Uniboot connectors allow for a quick-and-easy conversion of polarity in the field without exposing the fibres or needing any tools. The slim, round, 2-fibre cable allows it to carry fibres of the Uniboot-style duplex connectors, reducing the cable bulk when routing and providing improved handling in high-density applications.

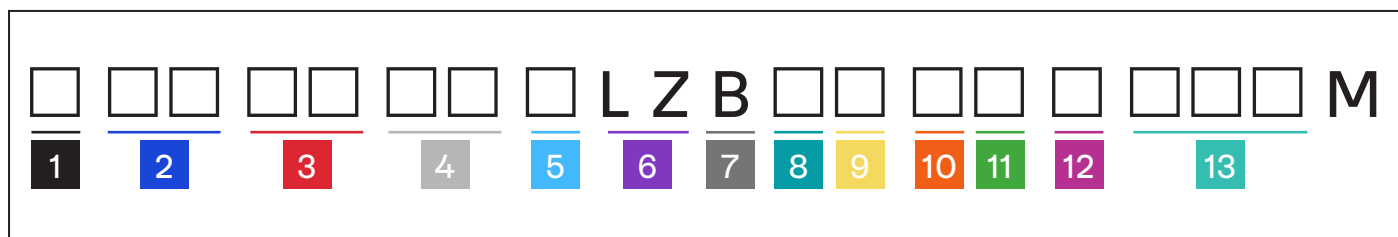
Cable Assemblies shown on the next page need to be ordered with an Everon® LAN1 Housing, ADPT style (refer to housing ordering grid on page 5).



Everon LAN1 Multifibre Housing, 72 Fibres

Multifibre Cable Assemblies – Ordering Information

Corning multifibre cable assemblies can be ordered in a few easy steps. The steps involve the selection of pulling grip, connector(s), fibre count, fibre type, leg diameter, leg length, polarity, and total length of product. The steps are listed below.



1 Select grip.

- C = No pulling grip
- A = Pulling grip on one end
(packaged outside reel)
- B = Pulling grips on both ends
(first packaged outside reel,
second packaged inside reel)

2 Select connector on first end. (packaged outside reel)

Single-mode:

- 00 = Pigtail*
- 02 = LC Simplex UPC
- 04 = LC Duplex UPC
- 18 = LC Duplex APC
- 22 = LC Simplex APC
- 44 = SC Simplex APC
- 58 = SC Simplex UPC
- 66 = SC Duplex APC
- 72 = SC Duplex UPC
- 78 = LC Duplex Uniboot UPC
- 80 = LC Duplex Uniboot APC
- MU = MDC UPC Senior
- MA = MDC APC Senior
- NU = SN UPC
- NA = SN APC

Multimode:

- 00 = Pigtail*
- 03 = LC Simplex
- 05 = LC Duplex
- 39 = SC Simplex
- 57 = SC Duplex
- 79 = LC Duplex Uniboot
- MM = MDC UPC Senior
- NM = SN UPC

3 Select connector on second end. (packaged inside reel)

See selection under 2.

4 Select fibre count.

- 08 = 8 fibres
- 12 = 12 fibres
- 24 = 24 fibres
- 36 = 36 fibres
- 48 = 48 fibres
- 72 = 72 fibres
- 96 = 96 fibres
- E4 = 144 fibres
- K2 = 192 fibres
- U8 = 288 fibres
- AE = 384 fibres (900 µm legs only)
- AK = 432 fibres (900 µm legs only)

5 Select fibre type.

- T = 50 µm Multimode (OM3)
- Q = 50 µm Multimode (OM4)
- V = 50 µm Wideband
Multimode (OM5)
- G = Single-mode Ultra (OS2)

6 Defines cable type.

- LZ = LSZH™

7 Defines cable flame rating.

- B = EU CPR class B2ca

8 Select leg length on first end.

- O = Pigtail*
- J = 300 mm
- C = 400 mm
- U = 500 mm
- K = 600 mm
- W = 700 mm
- D = 800 mm
- I = 900 mm
- L = 1,000 mm
- M = 1,200 mm
- B = 1,500 mm
- P = 1,800 mm
- Q = 2,000 mm

9 Select leg OD on first end.

- O = Pigtail*
- A = 2.0 mm
- B = 900 µm
- D = 1.6 mm†

10 Select leg length on second end. See selection under 8.

11 Select leg OD on second end. See selection under 9.

12 Select polarity.

- C = Classic (Type-B)
- P = Straight-through (Type-A)

13 Select cable length in meters.

- 003-200 M
- Assembly length is measured
from furcation point to furcation
point. (+1/-0 m)

* Pigtail available on straight polarity only.

† Only available for MDC, SN or LC Uniboot connector types.

Additional leg lengths and customised staggering for EDGE™ and Centrix™ hardware available upon request.

For OM4 heather violet, please add -VI at the end of the part number or contact Corning Customer Care at 00800 2676 4641 or cc.emea@corning.com.

Everon® LAN1 Fibre Housing – Hybrid Overview

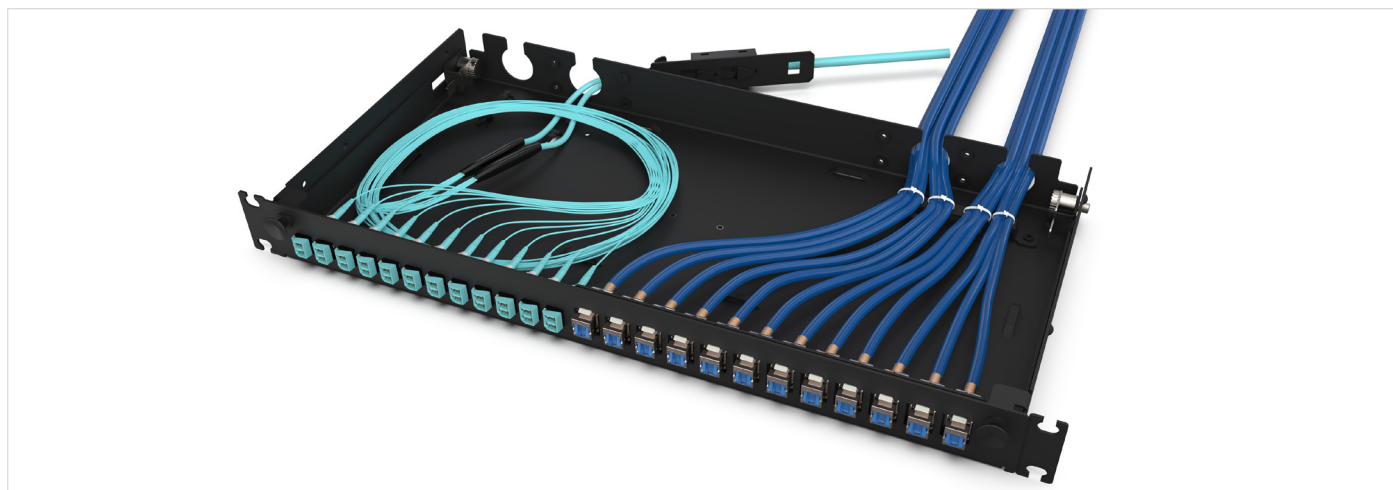
The Everon® Fibre Housing (LAN1) offers termination solutions for various applications in the LAN environment. Developed for 19-inch racks, the housings allow configurations for different connectivity needs as pre-terminated assemblies, field termination, or pigtail splicing. Everon Fibre Housing hybrid version (LAN1) can mix fibre and copper connectivity within the same housing to support special installations, for instance in colocation racks or multimedia applications.

Necessary accessories for field termination within the housing are included in the shipment. Accessories for pre-terminated assemblies or Plug & Play™ or EDGE™ solutions trunks and FTTD/FTTO applications have to be ordered separately.

Keystone copper module to be ordered separately.

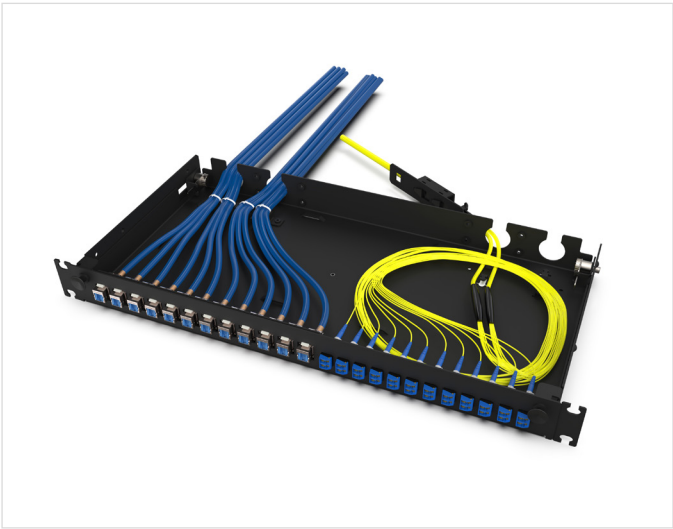
Keystone Jack Part Number	Product Description	Category	Jack Colour	Quantity in Pack	AWG Solid	AWG Flex	Channel Performance	PoE/PoE +	Transmission Speed
CAXXSM-00104-C001 *	xs500 1 Way STP Jack	6 _A	Silver	1	22-24	N/A**	Class EA Channel (4 connectors)	PoE / PoE+/4PPoE	10GbE
CAXXSM-00104-C011-BP *	xs500 1 Way STP Jack	6 _A	Silver	24	22-24	N/A**	Class EA Channel (4 connectors)	PoE / PoE+/4PPoE	10GbE
KAXESM-00101-C001-B6	KS250S 3 Way STP Jack	6	Silver	6	22-24	24-27	Class E Channel	PoE / PoE+/4PPoE	1GbE
KAXESM-00101-C001-BP	KS250S 3 Way STP Jack	6	Silver	24	22-24	24-27	Class E Channel	PoE / PoE+/4PPoE	1GbE
KAXVSM-00101-C001-B6	KS250U 3 Way UTP Jack	6	White	6	22-24	24-27	Class E Channel (4 connectors)	PoE / PoE+/4PPoE	1GbE
KAXVSM-00101-C001-BP	KS250U 3 Way UTP Jack	6	White	24	22-24	24-27	Class E Channel (4 connectors)	PoE / PoE+/4PPoE	1GbE
KAXBSM-00104-C001-B6	KS500S 3 Way STP Jack	6 _A	Silver	6	22-26	24-27	Class EA Channel (6 connectors)	PoE / PoE+/4PPoE	10GbE
KAXBSM-00104-C001-BP	KS500S 3 Way STP Jack	6 _A	Silver	24	22-26	24-27	Class EA Channel (6 connectors)	PoE / PoE+/4PPoE	10GbE
KAXKSM-00104-C001-B6	KS500U 3 Way UTP Jack	6 _A	White	6	22-26	24-27	Class EA Channel (4 connectors)	PoE / PoE+/4PPoE	10GbE
KAXBSM-00104-C001-BP	KS500U 3 Way STP Jack	6 _A	White	24	22-26	24-27	Class EA Channel (4 connectors)	PoE / PoE+/4PPoE	10GbE

* Copper conducting tape is not included with xs500 jacks and needs to be ordered separately: CAXCSN-00000-C011



Everon LAN1 Fibre Housing-Hybrid, 24 Fibres, 12 Copper Jacks

Everon® LAN1 Fibre Housing – Hybrid Ordering Information



Everon LAN1 Fibre Housing-Hybrid, 24 Fibres, 12 Copper Jacks

Features and Benefits

Easy to remove top cover
No tools needed

Housing made of aluminium
Lightweight, but robust

Quick-mount feature
Allows single-person mounting of housing

Adapters with ceramic inserts and LC duplex with shutters
Minimal insertion loss and clean connectors

Low installation depth
Mountable in shallow cabinets or racks

12 fibre ports and 12 copper ports
Accepts up to 12x Everon copper Keystone modules while LC adapters are provided

Multiple labelling options
Port numbering above adapter or customised labels

Strain-relief brackets included
No need to order separately

Ordering Information

LAN1 - - HYBRID - -

1

2

3

4

- 1

Select fibre count.

06 = 6 fibres

12 = 12 fibres

24 = 24 fibres
- 2

Select fibre adapter type.

AE = Shuttered LC Duplex UPC SM, blue

AF = Shuttered LC Duplex APC SM, green

AD = Shuttered LC MM, aqua

AV = Shuttered LC Duplex PC MM, violet

AY = Shuttered LC Duplex MM/OM5, lime green

- 3

Select fibre position on the front panel.

L = Fibre on the left









R = Fibre on the right
- 4

Select housing colour.







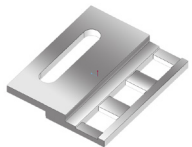




B = Black

G = Grey

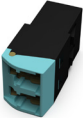

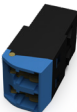


LAN1 Accessories

Part Number	Product Description	Units per Delivery	
LAN1-STRN-C-B	Everon® LAN1 U-clip EDGE™ cradle bracket, black	1/1	
LAN1-STRN-C-G	Everon LAN1 U-clip EDGE cradle bracket, grey	1/1	
LANS-GRND-KIT	Grounding Kit for LAN housings	1/1	
LAN1-TRAY-HOLDER	Everon LAN1 metal holder for trays	1/1	
LAN1-ANGL-BKT-20-B	Everon LAN1 angled bracket for M20 PG glands, black	1/1	
LAN1-ANGL-BKT-20-G	Everon LAN1 angled bracket for M20 PG glands, grey	1/1	
LAN1-ANGL-BKT-25-B	Everon LAN1 angled bracket for M25 PG glands, black	1/1	
LAN1-ANGL-BKT-25-G	Everon LAN1 angled bracket for M25 PG glands, grey	1/1	



LAN1 Accessories (continued)

Part Number	Product Description	Units per Delivery	
LAN1-STRN-T-B	Everon® LAN1 strain-relief bracket, T-shaped, black	1/1	
LAN1-STRN-T-G	Everon LAN1 strain-relief bracket, T-shaped, grey	1/1	
LAN1-UNI-M25-7-10	Everon LAN1 Universal split gland M25 for cable diameters 7-10 mm	N/A	
LAN1-UNI-M25-11-15	Everon LAN1 Universal split gland M25 for cable diameters 11-15 mm	N/A	
LANS-M20	Everon LAN1 Cable glands M20 for cable diameters 6-12 mm, pack of 10	10/1	
LANS-M25	Everon LAN1 Cable glands M25 for cable diameters 9-16 mm, pack of 10	10/1	
LAN1-21-BRKT-2	LAN1 bracket 21 in	2 /1	
WAXWSW-00008-C009	Patch Cable Guides, 1U, black	2/1	
WAXWSW-00000-C009	Patch Cable Guides, 1U, silver	2/1	
WAXWSW-00008-C007	1U Patch Cable Management Panel, 5 rings, black	1/1	
WAXWSW-00000-C007	1U Patch Cable Management Panel, 5 rings, silver	1/1	

LAN1 Accessories (continued)

Part Number	Product Description	Units per Delivery	
ADPT-KIT-12-AD	Pack of 12 LC PC Dup Adapters for LAN1	1/1	
ADPT-KIT-12-AV	Pack of 12 LC PC Dup OM3/4 Violet Adapters for LAN1	1/1	
ADPT-KIT-12-AE	Pack of 12 LC UPC Dup Adapters for LAN1	1/1	
ADPT-KIT-12-E7	Pack of 12 SC PC Dup Adapters for LAN1	1/1	
ADPT-KIT-12-72	Pack of 12 SC UPC Dup Adapters for LAN1	1/1	

LAN1 Cleaning Accessories

Part Number	Product Description	Units per Delivery	
CLEANER-PORT-LC	Single-fibre Port Cleaner for LC, keyed LC, and MU connector end faces for both UPC and APC polishes	1/1	
CLEANER-PORT-2.5	Single-fibre Port Cleaner for all 2.5 mm ferruled connectors such as FC, SC and ST® compatible; effective for PC, UPC and APC polishes	1/1	



Corning Optical Communications GmbH & Co. KG • Leipziger Strasse 121 • 10117 Berlin, GERMANY
+00 800 2676 4641 • FAX: +49 30 5303 2335 • www.corning.com/opcomm/emea

Corning Optical Communications reserves the right to improve, enhance, and modify the features and specifications of Corning Optical Communications products without prior notification. A complete listing of the trademarks of Corning Optical Communications is available at www.corning.com/opcomm/trademarks. All other trademarks are the properties of their respective owners. Corning Optical Communications is ISO 9001 certified. © 2024, 2025 Corning Optical Communications. All rights reserved. LAN-3162-A4-BEN / February 2025

