

# UMOXS™ Standard Cabinets

CORNING

## Features and Benefits

### Rugged, weather-protected aluminum cabinet and base

Withstands harsh environmental conditions

### Multiple mounting options

Can be pole- or pad-mounted outdoors or wall-mounted for indoor use

### Sealed cabinet bottom

No pea gravel required

### Individually enclosed cable channels

Protects binder groups

### Single-sided front access cabinet

All terminations and equipment easily serviced by a single technician

### Color-coded retainers with snap-in plastic designation labels

Easy identification of feeder and distribution pairs

Corning UMOXS™ cross-connect system is a family of interfaces for interconnecting feeder and distribution cables in the urban and rural outside plant copper-based network. The essential component is the unique, field-mountable, environmentally protected UMOXS cross-connect system connector.

Cabinets along with their associated hardware make up a versatile package that can also be used as splice closures, housings for electronic equipment, etc. The cabinets can be pole- or pad-mounted.

### Pad-Mounted Cabinet

The UMOXS Standard Cabinets all have single-sided access with a separate base compartment. These cabinets are available with either a standard or extended base. All UMOXS Standard Cabinets are factory equipped with bonding facilities, talk block, port plugs, duct sleeves, sleeve sealing clamps and cable pair designation labels.

Anchor assemblies, mounting columns, cable security covers, mounting plates, retainers and connectors are not supplied with the cabinets and must be ordered separately. The feeder/distribution ratio is variable and determined by the number of green and blue retainers ordered and installed.

### Pole-Mounted Cabinet

Pole-mounted cabinets are similar to the pad-mounted types except that they are equipped with a safety hand rail and no base. Each pole-mounted cabinet is provided with upper and lower mounting brackets.



UMOXS Standard Cabinet, 1800-Pair, Standard Base, Pad-Mount | Photo PIM0018



UMOXS Standard Cabinet, 1800-Pair, Extended Base, Pad-Mount | Photo PIM0020

# UMOXS™ Standard Cabinets

CORNING

Mounting columns, mounting plates, retainers and connectors are not supplied with the cabinets and must

be ordered separately. The feeder/distribution ratio is variable and determined by the number of green and blue retainers ordered and installed.



UMOXS Standard Pad-Mounted Cabinet, 1200-Pair, Standard Base | Photo PIM0012



UMOXS Standard Pole-Mounted Cabinet, 1200-Pair | Photo PIM0017

## Specifications

Operating Temperature	-40 °C to 70 °C (-40 °F to 158 °F)
Housing Material	Aluminum & Stainless Steel
Finish	Baked enamel, Duracron paint
Color	Statuary bronze

CORNING

# UMOXSTM Standard Cabinets

CORNING

## Ordering Information

Pole-Mounted Cabinets					
Part Number	Product Code		Dimensions (HxWxD)	Shipping Weight	Quantity
A0284035	QCCE06BS	UMOXSTM Standard Cabinet, 600-pair, pole-mounted	140 cm x 53 cm x 30 cm (55 in x 21 in x 12 in)	49 kg (108 lb)	1
A0284038	QCCE12BS	UMOXSTM Standard Cabinet, 1200-pair, pole-mounted	140 cm x 81 cm x 30 cm (55 in x 32 in x 12 in)	60 kg (133 lb)	1
A0284041	QCCE18BS	UMOXSTM Standard Cabinet, 1800-pair, pole-mounted	173 cm x 81 cm x 30 cm (68 in x 32 in x 12 in)	66 kg (145 lb)	1

Pad-Mounted Cabinets					
Part Number	Product Code		Dimensions (HxWxD)	Shipping Weight	Quantity
A0284033	QCCE06AS	UMOXSTM Standard Cabinet, 600-pair, standard base	135 cm x 46 cm x 33 cm (53 in x 18 in x 13 in)	40 kg (88 lb)	1
A0284036	QCCE12AS	UMOXSTM Standard Cabinet, 1200-pair, standard base	135 cm x 74 cm x 33 cm (53 in x 29 in x 13 in)	50 kg (110 lb)	1
A0284039	QCCE18AS	UMOXSTM Standard Cabinet, 1800-pair, standard base	135 cm x 99 cm x 33 cm (53 in x 39 in x 13 in)	65 kg (143 lb)	1

# UMOXS™ Standard Cabinets

CORNING

## Pad-Mounted Cabinets

Part Number	Product Code		Dimensions (HxWxD)	Shipping Weight	Quantity
A0284042	QCCE30AS	UMOXS Standard Cabinet, 3000-pair, standard base	135 cm x 152 cm x 33 cm (53 in x 60 in x 13 in)	105 kg (231 lb)	1
A0284034	QCCE06AE	UMOXS Standard Cabinet, 600-pair, extended base	178 cm x 46 cm x 33 cm (70 in x 18 in x 13 in)	60 kg (132 lb)	1
A0284037	QCCE12AE	UMOXS Standard Cabinet, 1200-pair, extended base	178 cm x 74 cm x 33 cm (70 in x 29 in x 13 in)	75.3 kg (166 lb)	1
A0284040	QCCE18AE	UMOXS Standard Cabinet, 1800-pair, extended base	178 cm x 99 cm x 33 cm (70 in x 39 in x 13 in)	95.3 kg (210 lb)	1
A0284043	QCCE30AE	UMOXS Standard Cabinet, 3000-pair, extended base	157 cm x 152 cm x 33 cm (62 in x 60 in x 13 in)	111 kg (244 lb)	1

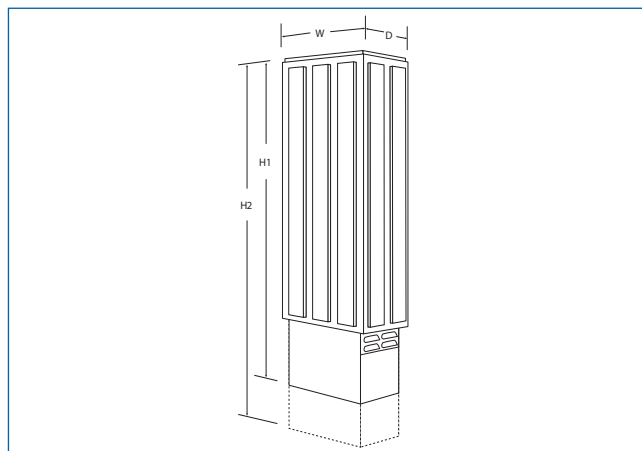
CORNING

# UMOXS™ Standard Cabinets

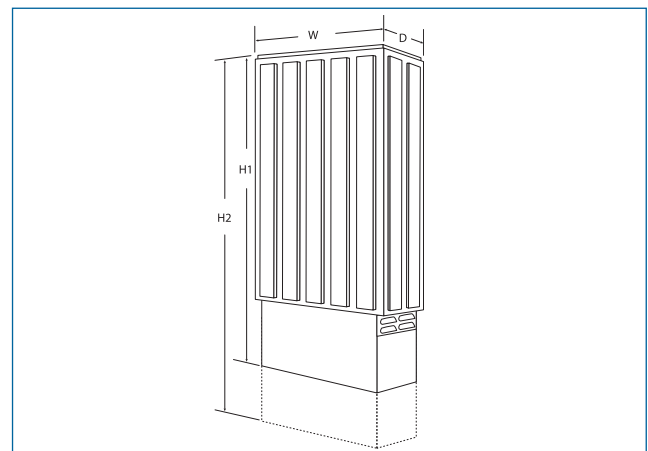
CORNING

## Dimensions

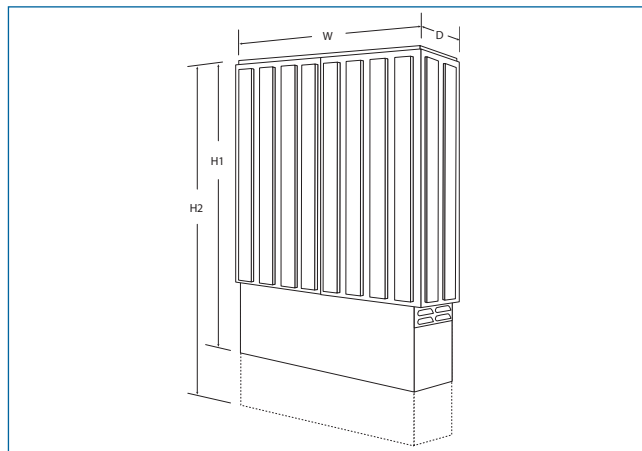
Description	Height (H1) Standard Base	Height (H2) Extended Base	Width (W)	Depth (D)
<b>600-Pair Cabinet</b>	134 cm (52.5 in)	179 cm (70.5 in)	43 cm (16.7 in)	30 cm (11.7 in)
<b>1200-Pair Cabinet</b>	134 cm (52.5 in)	179 cm (70.5 in)	70 cm (27.7 in)	30 cm (11.7 in)
<b>1800-Pair Cabinet</b>	134 cm (52.5 in)	179 cm (70.5 in)	96 cm (37.7 in)	30 cm (11.7 in)
<b>3000-Pair Cabinet</b>	134 cm (52.5 in)	154 cm (60.5 in)	148 cm (58.0 in)	30 cm (11.7 in)



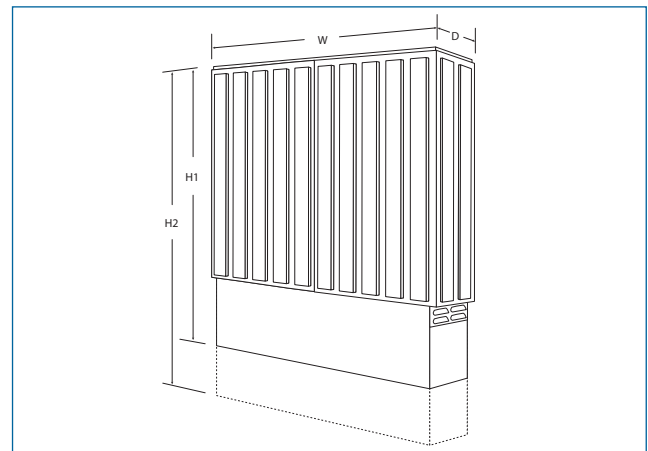
**600-Pair Cabinet**  
| Drawing ZA-1163



**1200-Pair Cabinet**  
| Drawing ZA-1164



**1800-Pair Cabinet**  
| Drawing ZA-1165



**3000-Pair Cabinet**  
| Drawing ZA-1166

CORNING

# UMOXS™ Standard Cabinets

CORNING

## Mounting Columns

UMOXS™ Mounting Columns are metal enclosures with hinged mounting trays. They support the retainers and protect and control the distribution of binder groups.

Standard mounting columns have a terminating capability of 600-pair, except for those used in the 1800-pair pole-mounted cabinet, which uses two 900-pair capacity columns.

Mounting columns are equipped with either distribution rings or a spool holder. The first column installed in any cabinet is always the spool holder type (which is mounted on the left). All subsequent mounting columns should be the distribution ring type. Jumper retainers are provided to control the vertical routing of cross-connect wires.



UMOXS Mounting Column, 600-Pair with Spool  
| Photo PIM0001



UMOXS Mounting Column, 600-Pair with Rings  
| Photo PIM0002

Part Number	Product Code		Dimensions (HxWxD)	Shipping Weight	Quantity
A0277890	QCME2A	UMOXS Column, 600-pair, with spool	87 cm x 31 cm x 18 cm (34 in x 12 in x 7 in)	9.1 kg (20 lb)	1
A0277891	QCME3A	UMOXS Column, 600-pair, with ring	87 cm x 31 cm x 18 cm (34 in x 12 in x 7 in)	9.1 kg (20 lb)	1
A0284055	QCME6A	UMOXS Column, 900-pair, with spool	125 cm x 33 cm x 18 cm (49 in x 13 in x 7 in)	12.7 kg (28 lb)	1
A0285799	QCME7A	UMOXS Column, 900-pair, with ring	125 cm x 33 cm x 18 cm (49 in x 13 in x 7 in)	12.7 kg (28 lb)	1

CORNING

# UMOXSTM Standard Cabinets

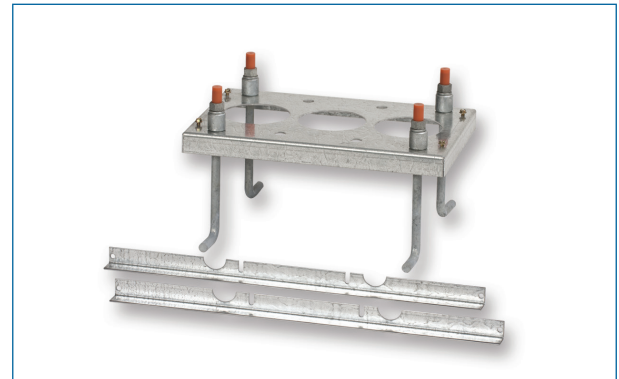
CORNING

## Anchor Assemblies

A UMOXSTM Anchor Assembly is required for each pad-mounted UMOXSTM Standard Cabinet to provide a level platform and to align the cable ducts.

Anchor assemblies consist of formed metal plates with cable duct holes to accommodate conduits up to 89 mm (3.5 in). They are equipped with welded mounting studs and anchor rods. Hardware for securing the cabinets is provided with each anchor assembly.

Two support anchor bars are supplied with each anchor assembly. These are used as temporary supports to hold the anchor plate in place while the concrete pad is being poured.



UMOXSTM Anchor Assembly, 600-Pair with 3.5-in Conduit  
| Photo PIM0033

Part Number	Product Code		Dimensions (HxWxD)	Shipping Weight	Quantity
A0286920	QAW1A06	UMOXSTM Anchor Assembly, 600-pair, 3.5-in conduit	53 cm x 30 cm x 23 cm (21 in x 12 in x 9 in)	5.9 kg (13 lb)	1
A0286921	QAW1A12	UMOXSTM Anchor Assembly, 1200-pair, 3.5-in conduit	64 cm x 30 cm x 23 cm (25 in x 12 in x 9 in)	9.1 kg (20 lb)	1
A0286922	QAW1A18	UMOXSTM Anchor Assembly, 1800-pair, 3.5-in conduit	89 cm x 30 cm x 23 cm (35 in x 12 in x 9 in)	10.0 kg (22 lb)	1
A0286923	QAW1A30	UMOXSTM Anchor Assembly, 3000-pair, 3.5-in conduit	142 cm x 30 cm x 23 cm (56 in x 12 in x 9 in)	12.7 kg (28 lb)	1

CORNING

# UMOXS™ Standard Cabinets

CORNING

## Cable Security Cover Kits

A cable security cover kit is used to prevent unauthorized access to the feeder and distribution cables.

Kits are available to provide this option on the 600-, 1200-, 1800- and 3000-pair pad-mounted cabinets. A security cover kit is also available for 3000-pair pad-mount cabinets that have been expanded to 4200-pair (refer to the Cabinet Expansion Kits section of this document). Each kit consists of a front security cover, a top security cover, a removable cover for each mounting column position, talk block adapter plate(s), bolts and installation instructions.

All of the parts (except the bolts which are stainless steel) are made of a heavy-gauge aluminum alloy. These parts are painted dark brown to match the cabinets.





# UMOXS™ Standard Cabinets

CORNING

## Pad-Mounted Cabinet Materials Ordering Information

Product Code	Catalog Number	Description	Maximum Capacity			
			600-Pair Standard Base	600-Pair Extended Base	1200-Pair Standard Base	1200-Pair Extended Base
<b>Mounting Column</b>						
<b>QCME2A</b>	A0277890	UMOXS™ Column, 600-pair, spool	1	1	1	1
<b>QCME3A</b>	A0277891	UMOXS Column, 600-pair, ring	N/A	N/A	1	1
<b>Connector System</b>						
<b>Connectors</b>						
<b>UMOX51B</b>	UMOX51B	UMOX5 25-Pair Sealed IDC Connector, single clips	24	24	48	48
<b>UMOX55B</b>	UMOX55B	UMOX5 25-Pair Sealed IDC Connector, 5-pair clips				
<b>Flame-Retardant Retainers (with sealant)</b>						
<b>KRE7A</b>	KRE7A	UMOX5 Retainer, green and/or	24	24	48	48
<b>KRE8A</b>	KRE8A	UMOX5 Retainer, blue				
<b>Special Security Retainers (without sealant)</b>						
<b>KRE5A</b>	KRE5A	UMOX5 Retainer, gray		As Required		
<b>KRE6A</b>	KRE6A	UMOX5 Retainer, red				
<b>Mounting Hardware</b>						
<b>Anchor Assembly, Conduit Maximum 3.5 in</b>						
<b>QAW1A06</b>	A0286920	UMOX5 Anchor Assembly, 600-pair	1	1	N/A	N/A
<b>QAW1A12</b>	A0286921	UMOX5 Anchor Assembly, 1200-pair	N/A	N/A	1	1
<b>QAW1A18</b>	A0286922	UMOX5 Anchor Assembly, 1800-pair	N/A	N/A	N/A	N/A
<b>QAW1A30</b>	A0286923	UMOX5 Anchor Assembly, 3000-pair	N/A	N/A	N/A	N/A
<b>Cable Security Covers (optional)</b>						
<b>QKM86A</b>	A0290465	UMOX5 Cable Security Cover, 600-pair	1	1	N/A	N/A
<b>QKM89A</b>	A0290467	UMOX5 Cable Security Cover, 1800-pair	N/A	N/A	N/A	N/A
<b>QKM90A</b>	A0290468	UMOX5 Cable Security Cover, 3000-pair	N/A	N/A	N/A	N/A

# UMOXS™ Standard Cabinets

CORNING

Product Code	Catalog Number	Description	Maximum Capacity			
			1800-Pair Standard Base	1800-Pair Extended Base	3000-Pair Standard Base	3000-Pair Extended Base
<b>Mounting Column</b>						
<b>QCME2A</b>	A0277890	UMOXS™ Column, 600-pair, spool	1	1	1	1
<b>QCME3A</b>	A0277891	UMOXS Column, 600-pair, ring	2	2	4	4
<b>Connector System</b>						
<b>Connectors</b>						
<b>UMOX51B</b>	UMOX51B	UMOX5 25-Pair Sealed IDC Connector, single clips	72	72	120	120
<b>UMOX55B</b>	UMOX55B	UMOX5 25-Pair Sealed IDC Connector, 5-pair clips				
<b>Flame-Retardant Retainers (with sealant)</b>						
<b>KRE7A</b>	KRE7A	UMOX5 Retainer, green	72	72	120	120
and/or						
<b>KRE8A</b>	KRE8A	UMOX5 Retainer, blue				
<b>Special Security Retainers (without sealant)</b>						
<b>KRE5A</b>	KRE5A	UMOX5 Retainer, gray			As Required	
<b>KRE6A</b>	KRE6A	UMOX5 Retainer, red			As Required	
<b>Mounting Hardware</b>						
<b>Anchor Assembly, Conduit Maximum 3.5 in</b>						
<b>QAW1A06</b>	A0286920	UMOX5 Anchor Assembly, 600-pair	N/A	N/A	N/A	N/A
<b>QAW1A12</b>	A0286921	UMOX5 Anchor Assembly, 1200-pair	N/A	N/A	N/A	N/A
<b>QAW1A18</b>	A0286922	UMOX5 Anchor Assembly, 1800-pair	1	1	N/A	N/A
<b>QAW1A30</b>	A0286923	UMOX5 Anchor Assembly, 3000-pair	N/A	N/A	1	1
<b>Cable Security Covers (optional)</b>						
<b>QKM86A</b>	A0290465	UMOX5 Cable Security Cover, 600-pair	N/A	N/A	N/A	N/A
<b>QKM88A</b>	A0290466	UMOX5 Cable Security Cover, 1200-pair	N/A	N/A	N/A	N/A
<b>QKM89A</b>	A0290467	UMOX5 Cable Security Cover, 1800-pair	1	1	N/A	N/A
<b>QKM90A</b>	A0290468	UMOX5 Cable Security Cover, 3000-pair	N/A	N/A	1	1

# UMOXS™ Standard Cabinets

CORNING

## Pole-Mounted Cabinet Materials Ordering Information

Product Code	Catalog Number	Description	Maximum Capacity		
			600-Pair	1200-Pair	1800-Pair
<b>Mounting Column</b>					
<b>QCME2A</b>	A0277890	UMOXS™ Column, 600-pair, spool	1	1	N/A
<b>QCME3A</b>	A0277891	UMOXS Column, 600-pair, ring	N/A	1	N/A
<b>QCME6A</b>	A0284055	UMOXS Column, 900-pair, spool	N/A	N/A	1
<b>QCME7A</b>	A0285799	UMOXS Column, 900-pair, ring	N/A	N/A	1
<b>Connector System</b>					
<b>Connectors</b>					
<b>UMOX51B</b>	UMOX51B	UMOXS 25-pair Sealed IDC Connector, single clips	24	48	72
<b>UMOX55B</b>	UMOX55B	UMOXS 25-pair Sealed IDC Connector, 5-pair clips			
<b>Flame-Retardant Retainers (with sealant)</b>					
<b>KRE7A</b>	KRE7A	UMOXS Retainer, green	24	48	72
and/or					
<b>KRE8A</b>	KRE8A	UMOXS Retainer, blue			
<b>Special Security Retainers (without sealant)</b>					
<b>KRE5A</b>	KRE5A	UMOXS Retainer, gray		As Required	
<b>KRE6A</b>	KRE6A	UMOXS Retainer, red			

# UMOXSTM Standard Cabinets

CORNING

## Cabinet Expansion Kits

### UMOXSTM Expansion Cabinet

UMOXSTM Expansion Cabinets permit increasing the capacity of existing 1800- or 3000-pair cabinets to accommodate customer growth. 1800-pair cabinets can be expanded to 3000 pairs while 3000-pair cabinets can be expanded to 4200 pairs. Both expansion cabinets are designed to mount on the existing base without disturbing wiring or interrupting service to subscribers.

The 3000-pair expansion cabinet may only be installed symmetrically (centered) on the existing base. However, a unique feature of the 4200-pair expansion cabinet is its ability to be installed symmetrically (centered) or asymmetrically (offset to the left or right side) of the base. This feature permits cabinet expansion even if there is an obstruction on one end of the existing cabinet. Cable security covers are not included with these kits. (Refer to the Cable Security Cover section of this document for details.)

The reusable Column Holding Fixture supports the mounting columns while performing the cabinet expansion to permit uninterrupted service throughout the procedure.

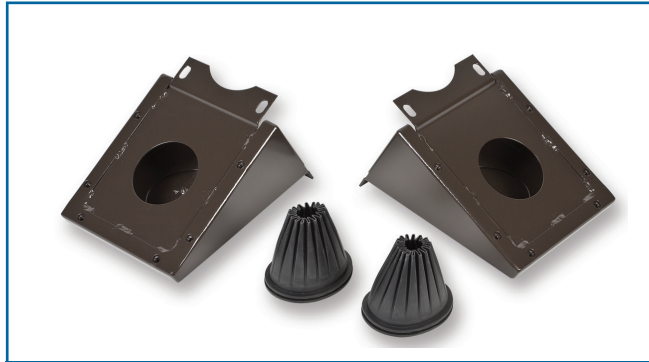


Part Number	Product Code		Dimensions (HxWxD)	Shipping Weight	Quantity
QKM990A	QKM990A	Cabinet Expansion Kit, 1800- to 3000-pair	36 cm x 153 cm x 122 cm (14 in x 60 in x 48 in)	93 kg (205 lb)	1
KMB002A	KMB002A	Cabinet Expansion Body Kit, 3000- to 4200-pair	48 cm x 203 cm x 119 cm (19 in x 80 in x 47 in)	114 kg (250 lb)	1
KMB003A	KMB003A	Expansion Cabinet Base Kit Cabinet,	22 cm x 32 cm x 32 cm (9 in x 13 in x 13 in)	5 kg (10 lb)	1
KMB004A	KMB004A	Expansion Cabinet Base Kit Cabinet,	22 cm x 145 cm x 32 cm (9 in x 57 in x 13 in)	9 kg (19 lb)	1
QKM993A	QKM993A	Column Holding Fixture	122 cm x 31 cm x 31 cm (48 in x 12 in x 12 in)	36 kg (80 lb)	1

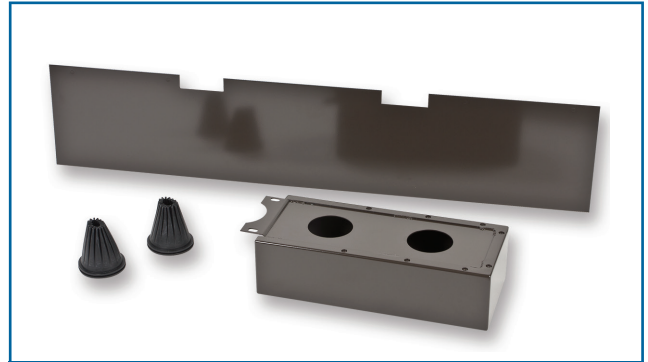
# UMOXS™ Standard Cabinets

CORNING

## Expansion Cabinet Materials



UMOXS™ Expansion Cabinet Base Kit, Symmetrical,  
3000-Pair to 4200-Pair | Photo PIM0108



UMOXS Expansion Cabinet Base Kit, Asymmetrical,  
3000-Pair to 4200-Pair | Photo PIM0109



UMOXS Expansion Cabinet Body Kit,  
3000-Pair to 4200-Pair | Photo PIM0106



Column Holding Fixture  
| Photo PIM0130



UMOXS 3000-Pair Standard Cabinet Expanded to  
4200-Pair, with Symmetrical Base | Photo COP318



UMOXS 3000-Pair Standard Cabinet Expanded to  
4200-Pair, with Asymmetrical Base | Photo COP319

CORNING

# UMOXS™ Standard Cabinets

CORNING

Product Code	Catalog Number	Description	1800- to 3000-Pair Expansion	3000- to 4200-Pair Symmetrical Expansion	3000- to 4200-Pair Asymmetrical Expansion
<b>Expansion Cabinets</b>					
<b>QKM990A</b>	QKM990A	Expansion Cabinet Kit, 1800- to 3000-pair	1	N/A	N/A
<b>KMB002A</b>	KMB002A	Expansion Cabinet Body Kit, 3000- to 4200-pair	N/A	1	1
<b>KMB003A</b>	KMB003A	Expansion Cabinet Base Kit, symmetrical, 3000- to 4200-pair	N/A	1	N/A
<b>KMB004A</b>	KMB004A	Expansion Cabinet Base Kit, asymmetrical, 3000- to 4200-pair	N/A	N/A	1
<b>Mounting Columns</b>					
<b>QCME3A</b>	A0277891	UMOXS™ Column, 600-pair, ring	2	2	2
<b>Connector System</b>					
<b>Connectors</b>					
<b>UMOXS1B</b>	UMOXS1B	UMOXS 25-Pair Sealed IDC Connector, single clips	48	48	48
<b>UMOXS5B</b>	UMOXS5B	UMOXS 25-Pair Sealed IDC Connector, 5-pair clips			
<b>Flame-Retardant Retainers (with sealant)</b>					
<b>KRE7A</b>	KRE7A	UMOXS Retainer, green	48	48	48
and/or					
<b>KRE8A</b>	KRE8A	UMOXS Retainer, blue			
<b>Special Security Retainers (without sealant)</b>					
<b>KRE5A</b>	KRE5A	UMOXS Retainer, gray		As Required	
<b>KRE6A</b>	KRE6A	UMOXS Retainer, red			
<b>Cable Security Covers (optional)</b>					
<b>QKM90A</b>	A0290468	UMOXS Cable Security Cover, 3000-pair	1	N/A	N/A
<b>Accessories</b>					
<b>QKM993A</b>	QKM993A	Column Holding Fixture	1*	1*	1*
<i>*Column Holding Fixture may be used for multiple installations.</i>					

Corning Optical Communications LLC • PO Box 489 • Hickory, NC 28603-0489 USA

800-743-2675 • FAX: 828-325-5060 • International: +1-828-901-5000 • [www.corning.com/opcomm](http://www.corning.com/opcomm)

A complete listing of the trademarks of Corning Optical Communications is available at [www.corning.com/opcomm/trademarks](http://www.corning.com/opcomm/trademarks). All other trademarks are the properties of their respective owners. Corning Optical Communications is ISO 9001 certified.

© 2017 Corning Optical Communications. All rights reserved.