

CORNING



Centrix™ System

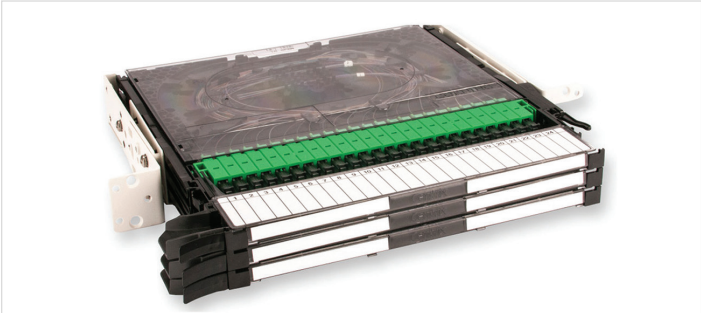
Contents

- Overview 3
- Frames, Housings, and Cassettes 6
 - Frames 7
 - Frame Isolation Pads 7
 - Empty Housings, Rack Mounting 8
 - Housings with Cassettes, Adapters, and Pigtails for Splicing 9
 - Stubbed Housings 10
- Cable Ordering Details 11
- Pigtail Splice Cassettes 12
- Centrix™ Patch Cassette 13
- Stubbed Cassettes with MTP® Connector Option 14
- Module with Integrated MTP® Adapter 15
- Splitter Cassettes 16
- Accessories 17
- Ordering Information 18
- Resources 19



Overview

Housing Size	1RU	2RU	4RU
Maximum Density-LC	108F	216F	432F
Maximum Density-SC	72F	144F	288F
Cassette Capacity	3	6	12



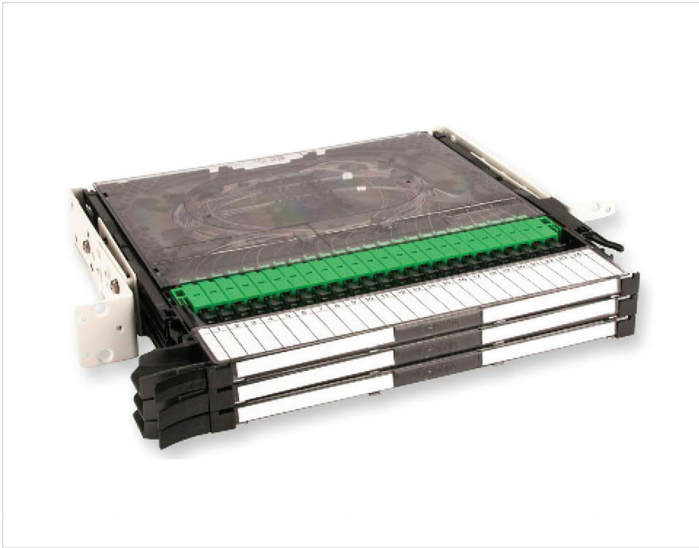
Centrix CTX-S1U Housing with 3 Cassettes



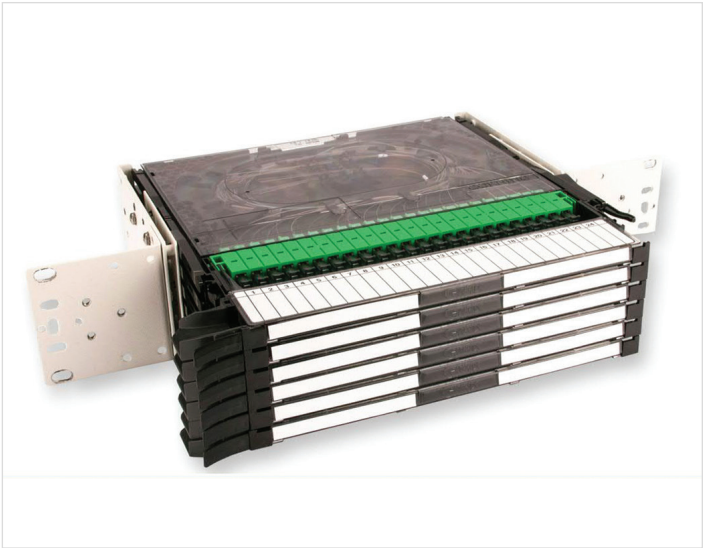
Centrix Rear Cable Access frame

- The Centrix™ system is a high-density fiber management system that provides a balance of industry-leading density with innovative jumper routing. The system can be deployed in multiple applications, including central offices, headends, fiber to the x (FTTx), fiber to the tower cell site (FTTCS), and data centers. The Centrix system has the following benefits:
- Supports up to 4,320 LC or 2,880 SC connector ports per standard 7-ft frame/2,134 mm.
 - The frame design provides optimized routing paths for jumpers, reducing the risk of pileup or entanglement. A single jumper length for an in-frame, cross-connect network design reduces jumper inventory.
 - At the foundation of the Centrix system is a single, modular cassette that can be tailored to include a variety of optical devices (splitter, WDM, etc). The modular cassette provides flexibility and functionality within a single frame without sacrificing density. Each cassette contains up to either 24 SC or 36 LC connector adapters.
 - Easy port access is possible due to a sliding cassette with a drop-down handle. A 1RU housing will hold 3 cassettes, a 2RU housing will hold 6 cassettes, and a 4RU will hold 12 cassettes.
 - Housings can be ordered empty, loaded with cassettes for on-frame splicing, or as stubbed assemblies to reduce installation time and risk.
 - The Centrix system is available with both rear or front cable access. Front cable access allows back-to-back frame configurations or mounting against a wall. Both frame configurations save space through increased port density.

Features	Benefits
Supports 4,320 LC or 2,880 SC ports per frame	Saves space through increased port density
Available with rear cable access	Designed in compliance with GR-449-CORE, Issue 3 standards
Modular cassette design	Enables one platform for many application spaces e.g., central office, headend, FTTx, FTTCS, and data center
Increased jumper routing space	Supports standard 1.6 and 2.0 mm jumpers (1.6 jumpers are required in a 36F cassette only)
Available in front cable access	Allows for back-to-back frame configuration
Available with WDM devices	Contact Customer Care to configure wavelength division multiplexing (WDM) devices



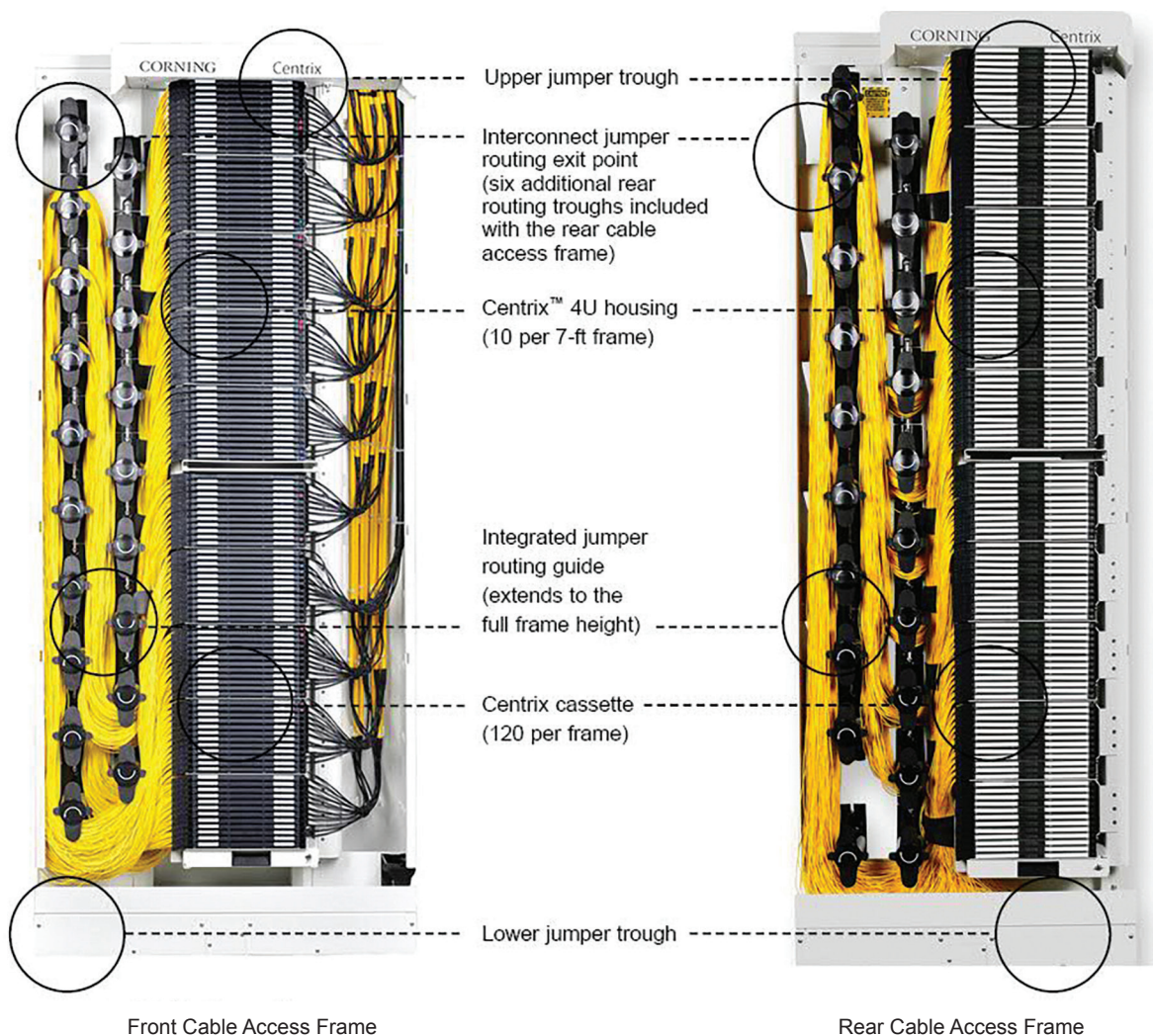
Centrix™ CTX-S1U Housing with 3 Cassettes | Photo CRR3606



Centrix CTX-S2U Housing with 6 Cassettes.
Shown with 23-inch Rack-Mounting Brackets | Photo CRR3608



Centrix CTX-S4U Housing with 12 Cassettes | Photo CRR3602



Centrix Frame, Rear, and Front Cable Access | Photos CRR2014, CRR3616

Cable Access	Dimensions: H x W x D
Front	84 x 35 x 12 in (2,134 x 902 x 305 mm)

Cable Access	Dimensions: H x W x D
Rear	84 x 30 x 24 in (2,134 x 762 x 610 mm)

Frame Capacity	1RU	2RU	4RU
Housing per frame	40	20	10

Frames, Housings, and Cassettes

Centrix™ housings and cassettes are available in several configurations:

Frames:

- Rear cable access
- Front cable access

Housings:

- Empty
- Loaded with pigtailed cassettes (for splicing)
- Stubbed
- Enclosed

Cassettes:

- Loaded with adapters and pigtails
- Loaded with patch panels
- Stubbed with 2 m MTP® connectors
- Loaded with MTP8 and MTP12 fiber connectors
- Loaded with splitters
- Loaded with WDMs



Centrix 1RU, 2RU, and 4RU Housings

Fiber Capacity						
Adapter Type	Capacity	Terminations per Cassette	Terminations per Housing Size			Terminations per Frame
			1RU	2RU	4RU	
SC	Min	12	36	72	144	1,440
	Max	24	72	144	288	2,880
LC	Min	24	72	144	288	2,880
	Max	36	108	216	432	4,320

Frames

Ordering Information

CTX - - FRAME - 7

1

- 1 Select frame options.
- SA = Centrix™ standard frame, rear cable access, 7 ft
- FA = Centrix frame, front cable access, 7 ft

Description	Part Number
Centrix Standard Rear Cable Access Frame, 7 ft	CTX-SA-FRAME-7
Centrix Rear Cable Access Frame, 6 ft (70-in high)	CTX-SA-FRAME-6
Centrix Front Cable Access Frame, 7 ft	CTX-FA-FRAME-7

Note: Corning recommends using an isolation pad with all installations of Centrix frames.

Frame Isolation Pads

Ordering Information

CTX - PK -

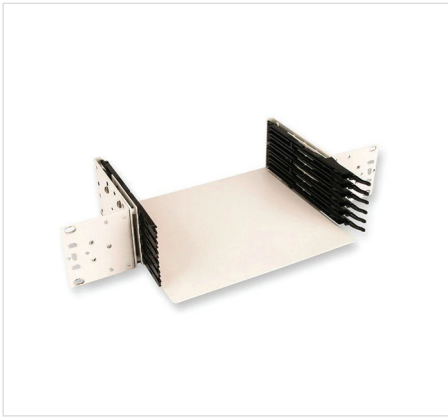
1

- 1 Select frame isolation pads.
- SA = Centrix standard frame isolation pad, rear cable access
- FA = Centrix frame isolation pad, front cable access

Empty Housings, Rack Mounting



Centrix 1U Housing



Centrix 2U Housing
Shown with 23-inch Rack-Mounting Brackets



Centrix 4U Housing

Ordering Information

CTX -

1

- 1
- Select Centrix rack housings.

S1U = 1RU, 3 cassette housings, empty

S2U = 2RU, 6 cassette housings, empty

S4U = 4RU, 12 cassette housings, empty

E4U = 4RU, 12 cassette enclosed housings, empty



Centrix E4U Housing

Description	Part Number
Centrix™ Housing, 1U, 3 cassette positions, empty	CTX-S1U
Centrix Housing, 2U, 6 cassette positions, empty	CTX-S2U
Centrix Housing, 4U, 12 cassette positions, empty	CTX-S4U
Centrix Housing Enclosed, 4U, 12 cassette positions, empty	CTX-E4U

Housing Capacity				
Fibers Per Cassette	CTX-1U 3 Cassettes	CTX-2U 6 Cassettes	CTX-S4U & -E4U, 12 Cassettes	CTX-8U 24 Cassettes
12	36 (36)	72 (72)	144 (E4)	288 (U8)
24	72 (72)	144 (E4)	288 (U8)	576 (AZ)
36	108 (A8)	216 (M6)	432 (WW)	864 (CE)

Housings with Cassettes, Adapters, and Pigtails for Splicing



Ordering Information

CX

1

2

P

3

4

5

6

7

8

000

1

Select Centrix™ housing.

1 = 1U, up to 3 cassette positions
2 = 2U, up to 6 cassette positions
4 = 4U, up to 12 cassette positions

2

Select total fiber count.

Select fiber count per options below.*

Housing – Fiber count, 1RU
36 = 36, 12-fiber cassette
72 = 72, 24-fiber cassette
A8 = 108, 36-fiber cassette

Housing – Fiber count, 2RU
72 = 72, 12-fiber cassette
E4 = 144, 24-fiber cassette
M6 = 216, 36-fiber cassette

Housing – Fiber count, 4RU
E4 = 144, 12-fiber cassette
U8 = 288, 24-fiber cassette
WW = 432, 36-fiber cassette

3

Select fiber count per cassette.

12 = 12 fibers (SC)
24 = 24 fibers (LC or SC)
36 = 36 fibers (LCs)

4

Select adapter code.

Single-mode:
6C = SC APC
3C = SC UPC
B3 = LC APC
A9 = LC UPC

5

Defines pigtail length.

2 = Standard pigtail

6

Defines pigtail type.

R = Single-mode (OS2)

7

Select pigtail type.

J = Ribbon
H = Single-fiber

8

Defines Centrix splice housing.

000 = Standard

*Example configurations provided are for fully loaded pigtailed cassette housings; partially loaded pigtailed cassette housings are available and can be ordered by using a total fiber count value of: the number of cassettes multiplied by the fiber count of the cassette configuration requested. The number of cassettes available per housing must agree with selection [1] and the fiber count of the cassette must agree with selections [3] and [4].

Note: Not all part number configurations are available, please confirm availability with a Corning Optical Connectivity Customer Care representative.

Description	Part Number
Centrix Splice Housing, 4U, 12 cassettes each with 24 SC UPC adapters and SM pigtails, ribbon standard SM pigtails, total of 288F	CX4U8P24-3C-2RJ000
Centrix Splice Housing, 4U, 12 cassettes each with 36 LC UPC adapters and SM pigtails, ribbon standard SM pigtails, total of 432F	CX4WWP36-A9-2RJ000
Centrix Splice Housing, 1U, 3 cassettes each with 24 SC UPC adapters and SM pigtails, 900 μm standard SM pigtails, total of 72F	CX172P24-3C-2RH000

Corning Optical Communications

Centrix™ System | CRR-1415-AEN | Page 9

Stubbed Housings



Ordering Information

CX	<input type="text"/>	<input type="text"/>	<input type="text"/>	<input type="text"/>	<input type="text"/>	-	<input type="text"/>	<input type="text"/>	00	<input type="text"/>	<input type="text"/>
	1	2	3	4	5	6	7	8	9	10	

1 Select Centrix™ housing.

- 1 = 1U, 3 cassette positions
- 2 = 2U, 6 cassette positions
- 4 = 4U, 12 cassette positions
- 8 = 8U, 24 cassette positions

2 Select total fiber count.

Specify fiber count per table based on housing size.*

Housing – Fiber count, 1RU

- 36 = 36, 12-fiber cassette
- 72 = 72, 24-fiber cassette

Housing – Fiber count, 2RU

- 72 = 72, 12-fiber cassette
- E4 = 144, 24-fiber cassette
- M6 = 216, 36-fiber cassette

Housing – Fiber count, 4RU

- E4 = 144, 12-fiber cassette
- U8 = 288, 24-fiber cassette
- WW = 432, 36-fiber cassette

Housing – Fiber count, 8RU

- AZ = 576, 24-fiber cassette
- CE = 864, 36-fiber cassette

*108F not available.

3 Select stub length.

- 23 = 23 m (75 ft)
- 31 = 31 m (100 ft)
- 39 = 39 m (125 ft)
- 54 = 54 m (175 ft)
- 61 = 61 m (200 ft)
- 69 = 69 m (225 ft)
- 84 = 84 m (275 ft)
- 92 = 92 m (300 ft)
- C2 = 122 m (400 ft)
- F3 = 153 m (500 ft)

Note: Minimum length is 20 m

4 Select fiber count per cassette.

- 12 = 12 fibers (SC)
- 24 = 24 fibers (LC or SC)
- 36 = 36 fibers (LC)

5 Select adapter code.

Single-mode:

- 6C = SC APC
- 3C = SC UPC
- B3 = LC APC
- A9 = LC UPC

6 Defines fiber type.

- = Single-mode (OS2)

7 Select cable type.

Reference page 9 for Cable Type Selection

8 Defines special configuration.

- 00 = Standard

9 Select the number of cables.*

- 1 = One cable (standard)
- 2 = Two cables with full fiber count divided evenly

*Two cables only available for rear cable entry.

10 Select cable entry direction.

- Standard Access Frame (rear):
 - B = Right, when viewed from the rear (standard)
 - C = Left, when viewed from the rear
- Front Access Frame:
 - L = Left, when viewed from the front
 - R = Right, when viewed from the front (standard)

Not all part number configurations are available, please confirm availability with a Corning Optical Connectivity Customer Care Representative.

Description	Part Number
Centrix Stubbed 4U Housing, 288F using (12) 24 port SC UPC cassettes, SM, FREEDM® LT indoor/outdoor gel-free cable, 31 m stub	CX4U831243C-UF001B
Centrix Stubbed 4U Housing, 288F using (12) 24 port SC APC cassettes, SM, FREEDM LT indoor/outdoor gel-free cable, 31 m stub	CX4U831246C-UF001B
Centrix Stubbed 8U Housing, 864F using (24) 36 port LC APC cassettes, SM, SST-UltraRibbon™ riser gel-free cable, 61 m stub	CX8CE6136B3-V7001B

Cable Ordering Details

Cable availability may vary. The following tables are applicable for Centrix™ stubbed housings.

Indoor solutions:

Cable Characteristics			Fiber Account									
Code	Construction	Jacket	36	72	96	108	144	216	288	432	576	864
81	MIC®	Riser	X	X	X		X					
D9	MIC 250	Plenum	X	X	X		X	X	X	X		
U7	ALTOS® Gel Free Loose Tube	Single Jacket Riser	X	X	X		X	X	X			
C8	SST-Ribbon™	Plenum	X	X	X		X	X				
C7		Riser	X	X	X	X	X	X				
V8	SST-UltraRibbon™	Plenum							X		X	
V7	SST-UltraRibbon Gel Free	Riser-LSZH™							X	X		X

Indoor/outdoor solutions

Cable Characteristics			Fiber Account									
Code	Construction	Jacket	36	72	96	108	144	216	288	432	576	864
UF	ALTOS Gel Free - FREEDM®	Single Jacket Riser	X	X	X	X	X	X	X			
M4	MiniXtend®	Single Jacket	X	X	X		X					
CF	SST-Ribbon Gel Free	Freedm Riser	X	X	X		X	X				
VF	SST-UltraRibbon Gel Free	Freedm Riser							X	X		X
QZ	RocketRibbon®	Riser-LSZH					X		X		X	X

Outdoor solution

Cable Characteristics			Fiber Account								
Code	Construction	Jacket	36	72	96	144	216	288	432	576	864
U5	ALTOS Gel Free Loose Tube	Double Jacket/ Single Armor	X	X	X	X					
U4		Single Jacket Dielectric	X	X	X	X	X	X	X		
UC		Single Jacket / Single Armor	X	X	X	X	X	X	X		
C4	SST-Ribbon Gel Free	Single Jacket Dielectric	X	X	X						
C5		Single Jacket / Single Armor	X	X	X						
C4	RocketRibbon	Single Jacket Dielectric				X					
C5		Single Jacket / Single Armor				X					
V4		Single Jacket Dielectric					X	X			
V5		Single Jacket / Single Armor					X	X			
Q4		Single Jacket Dielectric							X	X	X
Q5		Single Jacket / Single Armor							X	X	X

Pigtail Splice Cassettes



Ordering Information

CTX CP P - - 2 000

1

2

3

4

5

6

7

- 1

Defines cassette type.

CP = Centrix™ cassette with adapters and pigtails
- 2

Select fiber count per cassette.

12 = 12 fibers (SC)

24 = 24 fibers (LC or SC)

36 = 36 fibers (LC)
- 3

Select adapter code.

Single-mode:

6C = SC APC

3C = SC UPC

B3 = LC APC

A9 = LC UPC
- 4

Defines pigtail type.

2 = Standard pigtails
- 5

Defines fiber type.

R = Single-mode (OS2)

Q = Multimode (OM4)

V = Multimode (OM5)
- 6

Select pigtail type.

J = Ribbon

H = Single-fiber
- 7

Defines optical devices.

000 = Standard

Not all part number configurations are available, please confirm availability with a Corning Optical Connectivity Customer Care representative.

Description	Part Number
Centrix Splice Cassette with 24 SC APC adapters and SM pigtails, MIC® 900 μm standard SM	CTXCPP24-6C-2RH000
Centrix Splice Cassette with 24 SC UPC adapters and SM pigtails, ribbon standard SM pigtails	CTXCPP24-3C-2RJ000
Centrix Splice Cassette with 36 LC UPC adapters and SM pigtails, ribbon standard SM pigtails	CTXCPP36-A9-2RJ000
Centrix Splice Cassette with 36 LC APC adapters and SM pigtails, ribbon standard SM pigtails	CTXCPP36-B3-2RJ000

Centrix™ Patch Cassette



Centrix 24-Port Front Right Access Cassette



Centrix 24-Port LC UPC Front Left Access Cassette

Ordering Information

CTXCA

1

-

2

3

1 Select total fiber count.*

- 12 = 12 fibers (SC)
- 24 = 24 fibers (LC or SC)
- 36 = 36 fibers (LC)
- E4 = 144 fibers (MTP®)

*Defined by cable access.

2 Select adapter code.

- Single-mode:
- 6C = SC APC
 - 3C = SC UPC
 - B3 = LC APC
 - A9 = LC UPC
 - 90 = MTP

3 Select cable access type.

- Rear Access[†]
- B = Rear access
- Front Access^{‡§}
- L = Left front access
 - R = Right front access
- [†]Rear Access will allow for a maximum of 24 SC or 36 LC.
- [‡]Front Access will allow for a maximum of 12 SC or 24 LC.
- [§]Rear access and front access are MTP compatible.

Stubbed Cassettes with MTP® Connector Option



Ordering Information

CTX

02

-D9-ULL*

1

2

3

4

5

6

7

8

1 Select fiber count.

- 12 = 12 fibers
- 24 = 24 fibers
- 36 = 36 fibers

2 Defines total fiber count.

- 02 = For MTP® pretermination

3 Select fiber count per cassette.

- 12 = 12 fibers (SC)
- 24 = 24 fibers (LC or SC)
- 36 = 36 fibers (LC)

4 Select adapter code.

Single-mode:

- 6C = SC APC
- 3C = SC UPC
- B3 = LC APC
- A9 = LC UPC

5 Defines pigtail length.

- D9 = Single-mode

6 Select preterminated connector type.

- 89 = MTP pinned (MTP standard)
- E8 = MTP 8F (non-pinned) SM

7 Select stub quantity.

- 1 = One cable stub
- 2 = Two cable stubs
- 3 = Three cable stubs

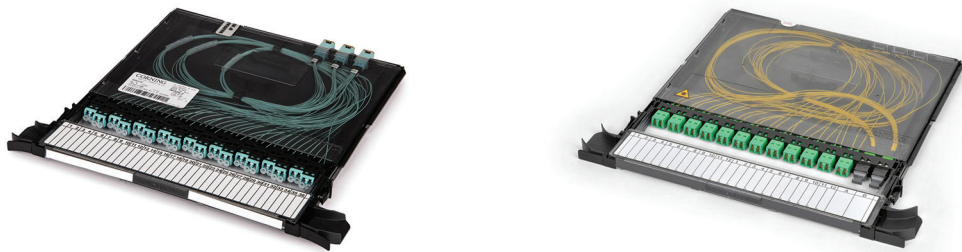
8 Select cable stub access.

- B = Rear access
- R = Front right access
- L = Front left access

*Note: This is an optional addition for ultra-low-loss modules only.
Not all part number configurations are available, please confirm availability with a Corning Optical Connectivity Customer Care representative.

Description	Part Number
Centrix™ Stubbed Cassette, 24F, SC APC to 2 MTP®, SM, 12-fiber cable assembly, 2 m	CTX2402246C-D9892B
Centrix Stubbed Cassette, 36F, LC UPC to 3 MTP, SM, 12-fiber cable assembly, 2 m	CTX360236A9-D9893B
Centrix Stubbed Cassette, 24F, LC APC to 2 MTP, SM, 12-fiber cable assembly, 2 m	CTX240224B3-D9892B
Centrix Stubbed Cassette, 24F, LC UPC to 2 MTP, SM, 12-fiber cable assembly, 2 m	CTX240224A9-D9892B
Centrix Stubbed Cassette, 36F, LC APC to 3 MTP, SM, 12-fiber cable assembly, 2 m	CTX360236B3-D9893B
Centrix Stubbed Cassette, 36F, LC UPC to 3 MTP, SM, 12-fiber cable assembly, 2 m, ultra-low-loss	CTX360236A9-D9893B-ULL

Module with Integrated MTP® Adapter



Ordering Information

CTX

-

-

ULL*

1

2

3

4

5

6

7

- 1

Select fiber count.

24 = 24 fibers (LC or SC)

36 = 36 fibers (LC)
- 2

Select adapter code.

Single-mode:

6C = SC APC

3C = SC UPC

B3 = LC APC

A9 = LC UPC

Multimode:

AD = LC duplex
- 3

Select predetermined MTP type.

Single-mode:

89 = Pinned 12F

E7 = Pinned 8F*

E8 = MTP 8F (non-pinned) SM

Multimode:

93 = Pinned 12F

*Defined by cable access.
- 4

Select MTP quantity.

2 = Two for 24-fiber module

3 = Three for 36-fiber module
- 5

Select fiber type.

R = Single-mode (OS2)

T = 50 μm multimode (OM3)

Q = 50 μm multimode (OM4)
- 6

Select MTP access type.

Rear Access:

B = Rear access frame

Front Access:

L = Left MTP adapters

R = Right MTP adapters
- 7

Select polarity.

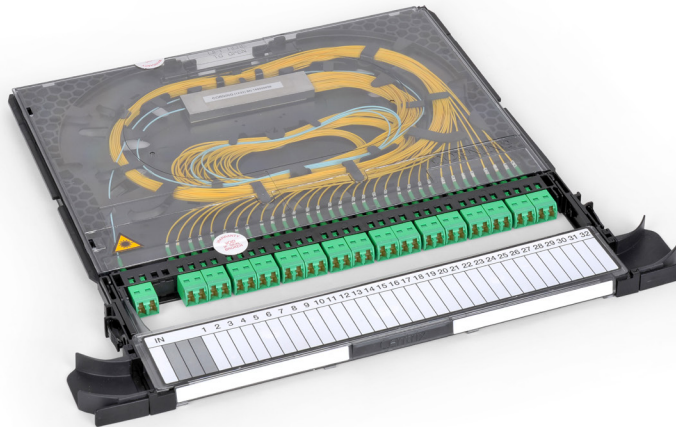
R = Classic (Straight Through Polarity)

U = Universal

*Note: This is an optional addition for ultra-low-loss modules only.
Not all part number configurations are available, please confirm availability with a Corning Optical Connectivity Customer Care representative.

Description	Part Number
CTX Module, 24 port, LC UPC front facings, pinned, 2 MPO adapters, SM, right side front facing MPO adapters, classic polarity	CTX24A9-892RRR
CTX Module, 24 port, LC UPC front facings, pinned, 2 MPO adapters, SM, left side front facing MPO	CTX24A9-892RLR
CTX Module, 24 port, LC APC front facings, pinned, 2 MPO adapters, SM, right side front facing MPO adapters, classic polarity	CTX24B3-892RRR
CTX Module, 24 port, LC APC front facings, pinned, 2 MPO adapters, SM, left side front facing MPO	CTX24B3-892RLR
CTX Module, 12 port, SC APC front facings, pinned, 1 MPO adapter, SM, right side front facing MPO	CTX126C-891RRR
CTX Module, 12 port, SC APC front facings, pinned, 1 MPO adapter, SM, left side front facing MPO	CTX126C-891RLR
CTX Module, 36 port, LC UPC front facings, pinned, 3 MPO adapters, SM, rear facing MPO adapters	CTX36A9-893RBR

Splitter Cassettes



Centrix Splitter Cassette | Photo CRR3810

Ordering Information

CTX CMA 00 - - SP

1 2 3 4 5 6

- 1 Defines cassette type, adapters with splitter devices.**
CMA = Centrix cassette with splitter devices
 - 2 00 = Reference place holder**
 - 3 Select adapter code.**
6C = SC APC (24F maximum)
B3 = LC APC (36F maximum)
A9 = LC UPC (36F maximum)
3C = SC UPC (24F maximum)
 - 4 Defines device type.**
SP = Splitter
 - 5 Select number of devices.**
1, 2, 3, 4, 5, 6, 7, 8*, or 9*
T = 12*
*1x2 only
 - 6 Select split ratio.**
102 = 1x2
104 = 1x4
108 = 1x8
116 = 1x16
132 = 1x32

Not all part number configurations are available, please confirm availability with a Corning Optical Connectivity Customer Care representative.

Description	Part Number
Centrix™ Splitter Cassette, one 1x32 splitter, LC APC connectors	CTXCMA00-B3-SP1132
Centrix Splitter cassette, one 1x16 splitter, LC APC connectors	CTXCMA00-B3-SP1116
Centrix Splitter cassette, one 1x16 splitter, SC APC connectors	CTXCMA00-6C-SP1116

Accessories

Reference Standard Single Frame Cross-Connect Jumper Part Numbers	
Part Number	Description
444401G3116004M	Jumper, single-mode, SC APC to SC APC, 4 m long, 1.6 mm outer diameter
585801G3116004M	Jumper, single-mode, SC UPC to SC UPC, 4 m long, 1.6 mm outer diameter
222201G3116004M	Jumper, single-mode, LC APC to LC APC, 4 m long, 1.6 mm outer diameter
020201G3116004M	Jumper, single-mode, LC UPC to LC UPC, 4 m long, 1.6 mm outer diameter
224401G3116004M	Jumper, single-mode, LC APC to SC APC, 4 m long, 1.6 mm outer diameter

Note: Corning recommends 1.6 mm jumpers for use in the Centrix™ solution. Full-size Centrix frames support 2,880 to 4,320 jumpers predicated on the connector selection. Other configurations are available, please consult your customer service representative or sales manager for more information.

Centrix™ Housing Mounted Brackets	
Part Number	Description
CTX-KIT-1RU-19CLP	Centrix Mounting Kit with Jumper Management Clips for S1U housing mounting within a 19-in rack
CTX-KIT-1RU-23CLP	Centrix Mounting Kit with Jumper Management Clips for S1U housing mounting within a 23-in rack
CTX-KIT-2RU-19CLP	Centrix Mounting Kit with Jumper Management Clips for S2U housing mounting within a 19-in rack
CTX-KIT-2RU-23CLP	Centrix Mounting Kit with Jumper Management Clips for S2U housing mounting within a 23-in rack
CTX-KIT-4RU-19CLP	Centrix Mounting Kit with Jumper Management Clips for S4U housing mounting within a 19-in rack
CTX-KIT-4RU-23CLP	Centrix Mounting Kit with Jumper Management Clips for S4U housing mounting within a 23-in rack
CTX-KIT-4RU-23HUB	Centrix Mounting Kit with Jumper Management Clips to HUB within a 23-in rack
CTX-KIT-8RU-19CLP	Centrix Mounting Kit with Jumper Management Clips for S8U housing mounting within a 19-in rack
CTX-KIT-8RU-23CLP	Centrix Mounting Kit with Jumper Management Clips for S8U housing mounting within a 23-in rack

Centrix Stubbied MTP® Accessories	
Part Number	Description
CTX-KIT-F1U-7289	Centrix Front Access Frame, 1U, side-mounted MTP adapter panel with 6 SM MTP adapters per panel (72F)
CTX-KIT-F1U-A889	Centrix Front Access Frame, 1U, side-mounted MTP adapter panel with 9 SM MTP adapters per panel (108F)
CTX-KIT-F2U-E489	Centrix Front Access Frame, 2U, side-mounted MTP adapter panel with 12 SM MTP adapters per panel (144F)
CTX-KIT-F2U-M689	Centrix Front Access Frame, 2U, side-mounted MTP adapter panel with 18 SM MTP adapters per panel (216F)
CTX-KIT-F4U-U889	Centrix Front Access Frame, 4U, side-mounted MTP adapter panel with 24 SM MTP adapters per panel (288F)
CTX-KIT-F4U-WW89	Centrix Front Access Frame, 4U, side-mounted MTP adapter panel with 36 SM MTP adapters per panel (432F)
CTX-KIT-S1U-7289	Centrix Rear Access Frame, 1U, side-mounted MTP adapter panel with 6 SM MTP adapters per panel (72F)
CTX-KIT-S1U-A889	Centrix Rear Access Frame, 1U, side-mounted MTP adapter panel with 9 SM MTP adapters per panel (108F)
CTX-KIT-S2U-E489	Centrix Rear Access Frame, 2U, side-mounted MTP adapter panel with 12 SM MTP adapters per panel (144F)
CTX-KIT-S2U-M689	Centrix Rear Access Frame, 2U, side-mounted MTP adapter panel with 18 SM MTP adapters per panel (216F)
CTX-KIT-S4U-U889	Centrix Rear Access Frame, 4U, side-mounted MTP adapter panel with 24 SM MTP adapters per panel (288F)
CTX-KIT-S4U-WW89	Centrix Rear Access Frame, 4U, side-mounted MTP adapter panel with 36 SM MTP adapters per panel (432F)

Ordering Information

Centrix™ Bracket Kits and Accessories	
Part Number	Description
CTX-KIT-S4U-MTP-SR	Centrix Rear Access Frame, 4U, rear-mounted PNP trunk strain-relief bracket
CTX-KIT-SR-SA	Centrix Housing Cable Strain-Relief Bracket Only
CTX-KIT-SR-SA-UCC	Centrix Housing Cable Strain-Relief Kit with UCC clamp for rear cable access applications
CTX-KIT-SR-FA-UCC	Centrix Housing Cable Strain-Relief Kit with UCC clamp for front cable access applications
CTX-KIT-SR-CS	Buffer Tube and Ribbon Internal Cassette Transition Strain-Relief (12 per pack)
CTX-KIT-RT-DH	Centrix Cassette Kit for right-hand jumper routing (12 per pack)

Centrix Installation and Usage Accessories	
Part Number	Description
CTX-WORKSHELF	Centrix Frame-Mounted Workshelf
CTX-SERVICEBKT	Centrix Cassette Service Bracket

Centrix Mounting Kits into the OCC Cabinets	
Part Number	Description
CTX-KIT-S4U-OCC	Retro Kit for converting an original OCC-031, -051 OR -080 cross-connect cabinet to mount Centrix housings within the OCC cabinet
CTX-KIT-JRG-OCC	Centrix Jumper Routing Guide for use in OCC cabinets
CTX-KIT-CTR80-OCC	Retro Kit for converting an original OCC-080 center channel mounting bracket in the cross-connect cabinet to mount Centrix Housings
CTX-24LABEL-288KIT	Centrix 288F Label Kit (24F cassettes only)
CTX-LABEL-432KIT	Centrix 432F Label Kit
CTX-LABEL-864KIT	Centrix 864F Label Kit
CTX-LABEL-1728KIT	Centrix 1,728F Label Kit
CTX-KIT-HUBLABELS	Color Coded Hub/Cassette Labels for Centrix frames

Resources

Standard Recommended Procedures (SRPs)	Rear Cable Access	Front Cable Access
Centrix™ Frame Installation	003-950	003-950
Centrix Empty Housing Installation	003-948	003-948
Centrix Stubbed Housing Installation	003-951	03-951
Centrix Pigtailed Housing and Cassette Installation	003-949	003-949
Jumper Routing in Centrix Frame	003-960	003-960
Centrix Splitter/WDM Cassettes	003-959	003-959
Centrix Accessories	003-961	003-961
Centrix MTP® Stubbed Cassette Installation	003-1006	03-1006
Centrix Platform Housing and MTP® Module Installation	003-1011	03-1011
Centrix IBU Installation – Centrix to EMF	003-969	—
Centrix Mounting Brackets into OCC-031 and OCC-051 Cabinets. Reference 003-988 & 003-1041 Retro Kits	—	—
Centrix Housing Mounted into 19-in/23-in Frames	003-1025	—
Centrix Patch Panel Installation	003-1017	003-1017
Centrix Mounting Brackets into the OCC-080-G Cabinet	003-1041	—

CORNING

Corning Optical Communications LLC • 4200 Corning Place • Charlotte, NC 28216 USA
800-743-2675 • FAX: 828-325-5060 • International: +1-828-901-5000 • www.corning.com/opcomm

Corning Optical Communications reserves the right to improve, enhance, and modify the features and specifications of Corning Optical Communications products without prior notification.
A complete listing of the trademarks of Corning Optical Communications is available at www.corning.com/opcomm/trademarks. All other trademarks are the properties of their respective owners.
Corning Optical Communications is ISO 9001 certified. © 2020, 2025 Corning Optical Communications. All rights reserved. CRR-1415-AEN / May 2025