

OptiTect® Local Convergence Cabinet, Gen III Series

CORNING

Features and Benefits

Industry-leading cabinet size
Significant freight, storage and installation efficiencies
and improved aesthetics

Full factory-stubbed cabinets
Enables quicker installation and rapid emergency resto-
ration

Available with multiple feeder and distribution cables as
well as toning capability
Enables quicker installation rapid emergency restorati-
on and enhances flexibility in addressing your network
needs

Connectorized feeder and distribution fibers to coupler/
splitter modules
No splicing after day one

Splitter modules are interchangeable within the Gen III
Cabinet family and the Eclipse® Hardware family
Streamlines logistical needs, reducing part numbers and
inventory

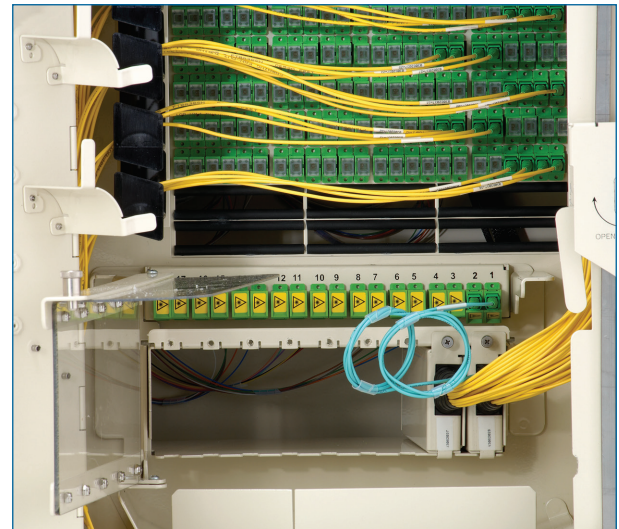
The OptiTect® Local Convergence Cabinet, Gen III
Series provides everything necessary to manage up to
432 fibers for an outside plant fiber-to-the-x (FTTx)
application. The OptiTect Local Convergence Cabinet, Gen
III's industry-leading size with its user-friendly design
and intuitive fiber management, allows the customer to
minimize field training, installation time and overall labor
costs while increasing speed-of-deployment and revenue
generation.

Feeder and distribution fibers, as well as splitter mo-
dules, are all contained within a single, robust, pad- or
pole-mounted enclosure to accommodate both aerial and
below-ground cable applications. Cabinets are outfitted
with factory-preconnectorized distribution and feeder ca-
ble(s), ensuring quick, easy and reliable field installation.
OptiTect Gen III Series Cabinets provide best-in-class fi-
ber management and slack storage systems, which offer
added protection for "live" subscribers.

Parking capacity for the Gen III splitter modules is ma-
ximized with a dedicated parking door that offers quick
field parking of new modules. Labels are included for ea-
sy identification of connectors and modules.



OptiTect Local Convergence Cabinet, Gen III Series
(432 Fibers) | Photo CCO110



OptiTect Local Convergence Cabinet, Gen III Series -
Splitter Module (288 Fibers) | Photo CCO112

OptiTect® Local Convergence Cabinet, Gen III Series

CORNING

Standards

Approvals and Listings Telcordia GR-2898-CORE,
GR-487-CORE GR-63-
CORE, GR-449-CORE

UL Listed to United States
safety standards

RDUP listed (formerly RUS)



OptiTect Local® Convergence Cabinet, Gen III Series Family – 144, 288 and 432 Fiber Distribution
| Photo CCO090

Specifications

Design			
	Configuration	Number of Doors	Color
72/144 Fiber	Pole or Pad	1	Almond
288 Fiber	Pole or Pad	1	Almond
432 Fiber	Pole or Pad	1	Almond

CORNING

OptiTect® Local Convergence Cabinet, Gen III Series

CORNING

Mechanical Characteristics

	Pole-Mount Height	Pad-Mount Height Includes 6-in Skirt	Width	Depth	Empty Weight (Pole)	Empty Weight (Pad)
72/144 Fiber	45.7 cm (18.0 in)	61.0 cm (24.0 in)	47.0 cm (18.5 in)	34.5 cm (13.6 in)	27.3 kg (60.0 lb)	27.3 kg (60.0 lb)
288 Fiber	68.5 cm (27.0 in)	83.8 cm (33.0 in)	47.0 cm (18.5 in)	34.5 cm (13.6 in)	31.8 kg (70.0 lb)	31.8 kg (70.0 lb)
432 Fiber	84.6 cm (33.3 in)	99.8 cm (39.3 in)	47.0 cm (18.5 in)	34.5 cm (13.6 in)	36.3 kg (80.0 lb)	38.3 kg (85.0 lb)

Splitter Configurations

	Connector Type				Splitter Output Parking Capacity
72/144 Fiber	SC APC or SC UPC	3	5	10	128
288 Fiber	SC APC or SC UPC	5	9	18	192
432 Fiber	SC APC or SC UPC	7	14	28	192

Note: Proper splitter module fit, design, and connector/cable integrity are critical to cabinet performance. All listings, approvals, and specifications are based on Corning LS Cabinets used exclusively with Corning LS Splitter modules. Use of any other splitter in the Corning LS Cabinet may result in physical damage to the Corning LS Cabinet. Failure to adhere to these guidelines and use of a splitter other than the Corning LS Splitter in the Corning LS Cabinet will void Corning's warranty on the LS Cabinet.

OptiText® Local Convergence Cabinet, Gen III Series

CORNING

Ordering Information

<input type="text"/>	<input type="text"/>	<input type="text"/>	P	<input type="text"/>	<input type="text"/>	<input type="text"/>	<input type="text"/>	<input type="text"/>	<input type="text"/>	<input type="text"/>	<input type="text"/>	<input type="text"/>	<input type="text"/>	<input type="text"/>
1	2	3		4	5	6	7	8	9	10	11	12	13	

1 Select cabinet color.
S = Almond (standard)
T = Green (special color – call for lead time)

2 Select cabinet size.
M = 72 fiber
D = 144 fiber
C = 288 fiber
A = 432 fiber

3 Select mounting.
P = Pole
A = Pad

4 Select feeder fiber count.
1 = 12 fiber (144 cabinet)
2 = 24 fiber (144 or 288 cabinets only, standard for 144 cabinets)
4 = 48 fiber (standard for 288 and 432 cabinets)
X = Two 24 fiber (288 cabinet only)
Y = Two 48 fiber (432 cabinet only)
See Note 1.

5 Select feeder cable length.
16 = 16 m (50 ft)
31 = 31 m (100 ft), standard

6 Select feeder cable type.
C4 = SST-Ribbon™ Dielectric Cable
U4 = ALTOS® Loose Tube Dielectric Cable
UC = ALTOS Loose Tube Single-Jacket, Single-Armored Cable

7 Select distribution cable configuration. (Select distribution cable count.)
1 = One cable
2 = Two cables (288 or 432 cabinets only)

8 Select distribution fiber count for each cable (they must be equal).
K = 72 fiber (loose tube or ribbon)
C = 144 fiber (loose tube or ribbon)
D = 216 fiber (loose tube or ribbon)
E = 288 fiber (loose tube or ribbon)
A = 432 fiber (loose tube or ribbon)

9 Select distribution cable length.
16 = 16 m (50 ft)
31 = 31 m (100 ft), standard

10 Select distribution cable type.
C4 = SST-Ribbon™ Dielectric Cable (144 cabinet only)
U4 = ALTOS® Loose Tube Dielectric Cable
Q4 = ALTOS Ribbon Dielectric Cable (288 or 432 cabinets only)
UC = ALTOS Loose Tube Single-Jacket, Single-Armored Cable
See Note 2.

11 Select connector type.
S = SC APC, standard
U = SC UPC

12 Select splitter module quantity.
0 = None, standard
1 = One
2 = Two

13 Select module type.
0 = No module, standard
D = Dual 1x16
A = 1x32

1) Feeder fiber count should match or exceed total splitter inputs
2) When ordering the 288 or 432 cabinet with armored cable, the toning box is included.

OptiTect® Local Convergence Cabinet, Gen III Series

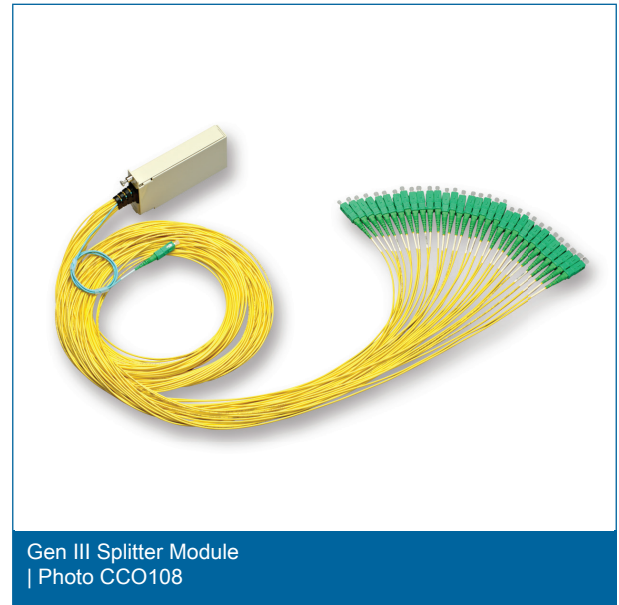
CORNING

Gen III Splitter Modules

All splitter modules are compatible and interchangeable across all OptiTect® Compact Local Convergence Point (cLCP) Cabinets. The modules meet applicable sections of Telcordia GR-1209-CORE and GR-1221-CORE. Each splitter module features connectorized inputs and outputs.

Features

- ▣ First with bend-improved fiber on input and output legs (ITU-T G.657.A compliant)
- ▣ Field-proven performance
- ▣ Robust housing protects module during installation and throughout product life
- ▣ Integrated parking clips installed on connectors
- ▣ Interchangeable across indoor OptiTect® Gen III Cabinets and Eclipse® Hardware family
- ▣ Slim module is half the thickness of full-size module to maximize cabinet density; module is shipped with cabinet mounting bracket



Gen III Splitter Module Specifications (standard performance devices)

	Dimensions (HxWxD)	Insertion Loss, Typical	Insertion Loss, Maximum	Uniformity	Return Loss	Directivity	PDL
1x32 Splitter Module	63 mm x 23 mm x 125 mm	15.7 dB	17.1 dB	1.5	> 55 dB	> 55 dB	0.3
Dual 1x16 Splitter Module	63 mm x 23 mm x 125 mm	12.9 dB	14.0 dB	1.2	> 55 dB	> 55 dB	0.3
1x4 and Dual 1x4 Slim Splitter Modules	63 mm x 11.5 mm x 125 mm	6.7 dB	7.4 dB	1.0	> 55 dB	> 55 dB	0.2
1x8 and Dual 1x8 Slim Splitter Modules	63 mm x 11.5 mm x 125 mm	9.8 dB	10.5 dB	1.0	> 55 dB	> 55 dB	0.2
1x64 Splitter Module	63 mm x 23 mm x 125 mm	19.4 dB	20.4 dB	1.8	> 55 dB	> 55 dB	0.5

OptiTect® Local Convergence Cabinet, Gen III Series



Gen III Splitter Module Specifications (standard performance devices)

	Dimensions (HxWxD)	Insertion Loss, Typical	Insertion Loss, Maximum	Uniformity	Return Loss	Directivity	PDL
2x32 Splitter Module	63 mm x 23 mm x 125 mm	17.0 dB	18.0 dB	2.5	> 55 dB	> 55 dB	0.4
2x16 Splitter Module	63 mm x 23 mm x 125 mm	13.3 dB	14.5 dB	2.3	> 55 dB	> 55 dB	0.4

Note:

Wavelength Range 1260-1360 nm and 1480-1360 nm.

Insertion Loss and Uniformity values do not include connectors.

OptiText® Local Convergence Cabinet, Gen III Series

CORNING

Gen III Splitter Modules

Ordering Information

U	<input type="text"/>	B	1	C	C	<input type="text"/>	<input type="text"/>	Z	<input type="text"/>	<input type="text"/>	2	<input type="text"/>	<input type="text"/>	<input type="text"/>	<input type="text"/>
	1					2			3					4	

1 Select module size.

- M = Standard (1x32, dual 1x16, 1x64, 2x16, 2x32 only)
- S = Slim module (1x4, dual 1x4, 1x8, dual 1x8 only)

2 Select input connector code.

- 6C = SC APC (standard)
- 5C = SC UPC

3 Select output connector code.

- 6C = SC APC (standard)
- 5C = SC UPC

4 Select coupler/splitter configuration.

- 1132 = 1x32 (standard)
- 1164 = 1x64 (standard)
- 2116 = Dual 1x16 (two 1x1 in one module), standard
- 1216 = 2x16 (one splitter with two input fibers)
- 1232 = 2x32 (one splitter with two input fibers)
- 1014 = 1x4 slim module
- 2014 = Dual 1x4 slim module (two separate 1x4s in one module)
- 1018 = 1x8 slim module
- 2018 = Dual 1x8 module (two separate 1x8s in one module)

Connector type on the input legs must match the connector type on the output legs.

OptiText® Local Convergence Cabinet, Gen III Series



Accessories

Mounting Accessories

Part Number	Description	Units per Delivery
FDH-G3-POLKIT-SMB1	Gen III Side Pole-Mount Bracket, 288 or 432 cabinets only, beige	1/1
FDH-G3-RACKMNT-KIT	Gen III Rack-Mount Conversion Kit, beige	1/1
FDH-G3-WALLMNT-KIT	Gen III Wall-Mount Kit, beige	1/1

Replacement Accessories

Part Number	Description	Units per
FDH-G3144-DRKT-ALM	Gen III 144-fiber Fiber Distribution Hub Replacement Door, Left Beige	1/1
FDH-G3288-DRKT-ALM	Gen III 288-fiber Fiber Distribution Hub Replacement Door, Left Beige	1/1
FDH-G3432-DRKT-ALM	Gen III 432-fiber Fiber Distribution Hub Replacement Door, Left Beige	1/1

Cable Protection Accessories

Part Number	Description	
FDH-G3-CBLPROTPMB1	Gen III Cable Protection/Cover for Standard 288-Fiber and 432-Fiber Pole-Mount Cabinets	1/1
FDH-G3-CBLPROTSMB1	Gen III Cable Protection/Cover for Standard 288-Fiber and 432-Fiber Side Pole-Mount	1/1

Miscellaneous Accessories

Part Number	Description	Units per Delivery
PARKCLIP-32POS-32	Parking Clip, 32-Position (pack of 32)	1/1
FDH-G3SKRT-06-ALM	Gen III 6-inch Skirt	1/1
FDH-G3SKRT-12-ALM	Gen III 12-inch Skirt	1/1
FDH-G3-SPLTRBX-KITVZ	Gen III Splitter Box Kit	1/1

Corning Optical Communications LLC • PO Box 489 • Hickory, NC 28603-0489 USA

800-743-2675 • FAX: 828-325-5060 • International: +1-828-901-5000 • www.corning.com/opcomm

A complete listing of the trademarks of Corning Optical Communications is available at www.corning.com/opcomm/trademarks. All other trademarks are the properties of their respective owners. Corning Optical Communications is ISO 9001 certified.

© 2017 Corning Optical Communications. All rights reserved.