

Fiber Optic Hardware with Factory-Installed Pigtails

CORNING

Features and Benefits

Factory-quality termination

Superior performance

Preloaded panels and hardware

Reduce installation time

Variety of connector and cable types

Various installation options

Custom configurations available

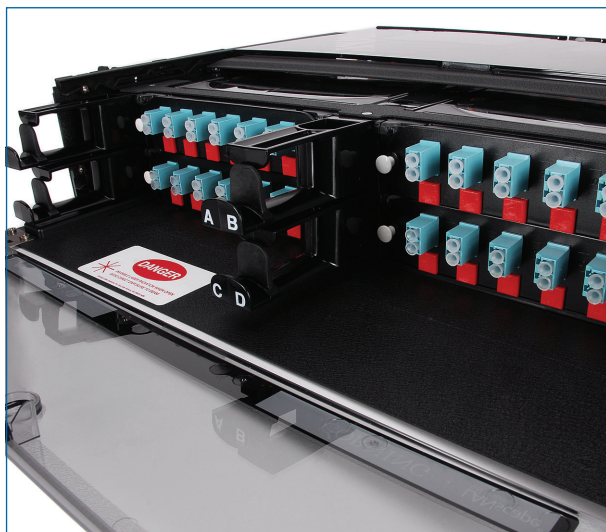
Meet specific customer needs

Available in a variety of hardware styles, connector types and fiber counts.

Versatility

Corning offers a variety of hardware styles and connector types for its factory-installed pigtails. These enable splicing within the fiber optic housing or can be mated with a separate housing for on-the-rack splicing. Available with MIC® cable or ribbon and various industry-standard connector types, the housings come partially or fully loaded from the factory with connectorized pigtails. The terminated pigtails are fully tested and preloaded into panels that are preloaded into the housings. In the case of the CCH housings, the pigtails and panels are preloaded into the CCH cassettes, which are then preloaded into the housings.

Factory preloading reduces installation time in the field, reduces the total amount and size of packaging materials, and minimizes the number of line items on an order. Contact Corning's Customer Care Representatives for more information on the availability of special configurations.



Closet Connector Housing (CCH-02U)
| Photo LAN2807

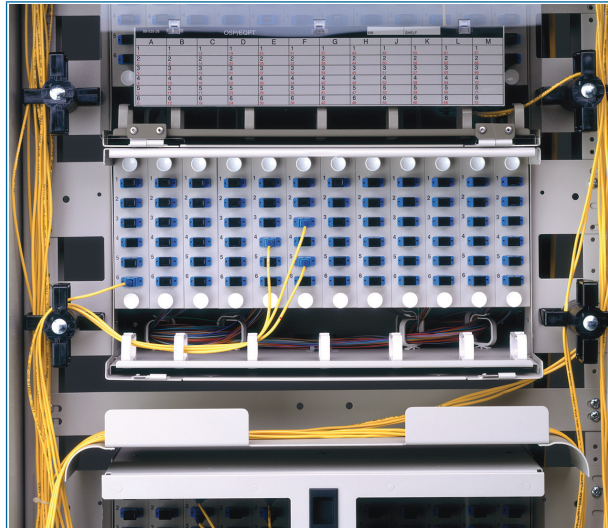


Pretium Connector Housing (PCH-04U)
| Photo LAN2599

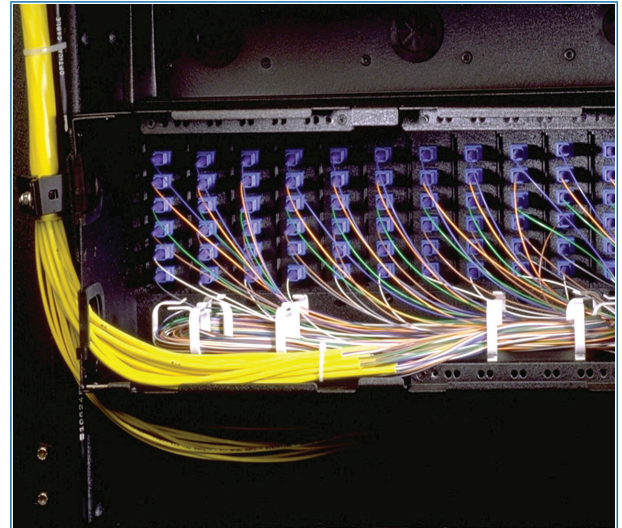
CORNING

Fiber Optic Hardware with Factory-Installed Pigtails

CORNING



FCD Unit Connector Housing
| Photo ICH93



Eclipse Hardware Connector Housing
| Photo ICH78

CORNING

Fiber Optic Hardware with Factory-Installed Pigtails

CORNING

CCH and WCH Housing with Cassettes

Ordering Information

<div><div></div><div></div><div></div></div> <div>1</div>	<div><div></div><div></div></div> <div>2</div>	<div>P</div> <div><div></div><div></div></div> <div>3</div>	<div>-</div> <div><div></div><div></div></div> <div>4</div>	<div>-</div> <div>0</div>	<div><div></div><div></div></div> <div>5</div>	<div><div></div><div></div></div> <div>6</div>	<div>0</div> <div>0</div> <div>0</div>
---	--	---	---	---------------------------	--	--	--

1 Select housing size.

CH1 = CCH-01U
CH2 = CCH-02U
CH3 = CCH-03U
CH4 = CCH-04U
WC2 = WCH-02P
WC4 = WCH-04P
WC6 = WCH-06P

3 Select number of fibers required per cassette panel for capacity based on connector type.

Examples:

06 = 6 fibers
12 = 12 fibers
24 = 24 fibers

5 Select fiber type.

K = 62.5 μ m multimode (OM1)
B = 50 μ m multimode (OM2)
T = 50 μ m multimode (OM3)
Q = 50 μ m multimode (OM4)
R = Single-mode (OS2)

2 Select total fiber count (0-99 fibers, enter number; 99+, enter alphanumeric code from Table A).

4 Select adapter code (see Adapter/Connector Code Options Table).

6 Select splicing type.

E = Single-fiber
J = 12 fiber ribbon (only for fiber counts 12 and 24)

- 1) Since the pigtails are entirely contained within each cassette, the pigtail length is fixed at ~2 m.
2) Splice trays are included in the CCH Cassettes.

Ordering Information

Part Number Example		
Part Number	Description	Units per
CH4U8P24-B3-0RE000	Closet Connector Housing with Pigtailed Cassettes, Single Mode, LC DUP APC, SM, 288 Fibers total, with 12- 24 Fiber Single Fiber 250um Pigtailed	1/1

CORNING

Fiber Optic Hardware with Factory-Installed Pigtails

CORNING

Non CCH and WCH Housing with Panels

Ordering Information

<input type="text"/>	<input type="text"/>	<input type="text"/>	<input type="text"/>	<input type="text"/>	P	<input type="text"/>	<input type="text"/>	-	<input type="text"/>	<input type="text"/>	-	<input type="text"/>	<input type="text"/>	<input type="text"/>	<input type="text"/>	<input type="text"/>	<input type="text"/>	<input type="text"/>
1	2	3	4	5	6	7	8	9	10									

1 Select housing type (see Housing Options Table).

2 Select total fiber count (0-99 fibers, enter number; 99+, enter alphanumeric code from Table A).

3 Select number of fibers required per panel for panel capacity based on connector type from Table B.
Examples:
06 = 6 fibers 12 = 12 fibers
24 = 24 fibers

4 Select adapter code (see Adapter/Connector Code Options Table).

5 Select pigtail length in meters.
1 m = 3.281 ft
Examples:
3 = 3 m (standard)
A = 10 m

6 Select mode of operation.
K = 62.5/125 μm multimode (OM1)
B = 50 μm multimode (OM2)
Q = 50 μm multimode (OM4)
R = Single-mode (OS2)

7 Select pigtail type.
H = Jacketed MIC® cable subunit, enhanced OptiStrip™ buffered fiber
J = Ribbon

8 Select number of splice trays (0-9 trays, enter number).
Examples:
6 = 6 trays
See Note 1.

9 Select splice tray type (see Splice Tray Options table for a selection of splice tray options available; if no splice tray, enter 0).
See Note 2.

10 Select lock option (where available).
L = Locking
0 = No lock
See Note 3.

Notes:

- 1) See splice tray options table for splice tray capacity and splice-type information.
- 2) Verify splice tray compatibility and capacity with the information listed in Section 1. If trays are to be ordered separately, enter a "2" for reserved 0.2-in tall capacity or a "4" for reserved 0.4-in tall tray capacity within the housing.
- 3) Units ordered with the locking feature will be shipped with one lock installed on the cable entry or provider side door for wallmountable hardware, and on the front door for rack-mountable hardware. Additional lock kits for hardware items featuring the possibility of dual locking doors may be ordered using the part number HDWR-LOCK-KIT.
- 4) Some product combinations using this matrix are not available. Please verify specific product availability and configurations with a Corning Cable Systems Customer Care representative.

Ordering Information

Part Number Example		
Part Number	Description	Units per
LD524P12-3C-3RJ1Y0	Lightguide Distribution Center (LDC) Housing, LGX® Compatible, pigtailed, LDC-005, 24 F, SC connectors, ribbon pigtails, 12 F connector panels, with one LGX Compatible	1/1

Fiber Optic Hardware with Factory-Installed Pigtails

CORNING

Housing Options

Prefix for Space 1	Housing	Housing Dimensions (H x W x D) in	Maximum Numbers of Panels per Housing	Panel/ Module Type	Splice Tray Options (see Table B)	Locking Availability	Notes
ACH™ Unit - Angled Connector Housing							
ACH	ACH-CMH-072	8 x 20.5 x 12	12	ACH			23-in frame only Requires ACH Unit housing
ACP	ACH Unit		N/A				
Centrix™ (CTX) Hardware							
Refer to Family Spec Sheet CRR-1415-AEN for ordering information							
CCH - Closet Connector Housing							
CH1	CCH-01U	1.75 x 17 x 17	2	CCH cassette		Front/Rear	19-in standard, 23-in sold separately
CH2	CCH-02U	3.5 x 17 x 17	4	CCH cassette		Front/Rear	19-in standard, 23-in sold separately
CH3	CCH-03U	5.25 x 17 x 17	6	CCH cassette		Front/Rear	19-in standard, 23-in sold separately
CH4	CCH-04U	7 x 17 x 17	12	CCH cassette		Front/Rear	19-in standard, 23-in sold separately
Eclipse® Hardware							
Refer to Family Spec Sheet 0170_NAFTA_AEN for ordering information							
EMF - Enhanced Management Frame							
Refer to Family Spec Sheet 0168_NAFTA_AEN for ordering information							
Fiber Building Terminal							
FBT	FBT-048	11 x 17 x 6.12	8	LDC	4 Type 2R 2 Type 4R	Single (provider & subscriber)	Wall-mountable, locking version available
FDC® Unit - Fiber Distribution Center							
FD2	FDC-002	17.5 x 17 x 11	12	FDC	22 Type 2R, 2S 14, Type 4R, 4S, 4A	Front	19- or 23-in frame, splice and termination combo unit, 72-fiber
FD3	FDC-003	8.75 x 17 x 11	4	FDC	12 Type 2R, 2S 14, Type 4R, 4S	Front	19- or 23-in frame, splice and termination combo unit, 24-fiber
FDV	FDC-005	5.25 x 17 x 11	4	FDC	2 Type 2R, 2S 14, Type 4R, 4S	Front	19- or 23-in frame, splice and termination combo unit, 24-fiber

Fiber Optic Hardware with Factory-Installed Pigtails

CORNING

Prefix for Space 1	Housing	Housing Dimensions (H x W x D) in	Maximum Numbers of Panels per Housing	Panel/ Module Type	Splice Tray Options (see Table B)	Locking Availability	Notes
HDF - High-Density Frame							
HD1	HDF single shelf	1.75 x 21.25 x 12	1	HDF	One UST-024		23-in frame only, left-cable entry only
HD2	HDF double shelf	3.5 x 21.25 x 12	2	HDF	Two UST-024		23-in frame only, left-cable entry only
HD3	HDF triple shelf	5 x 21.25 x 12	3	HDF	Three UST-024		23-in frame only, left-cable entry only
HD4	HDF four shelf	7 x 21.25 x 12	4	HDF	Four UST-024		23-in frame only, left-cable entry only
LDC - Lightguide Distribution Center							
LD1	LDC-001	21 x 17 x 11	24	LDC	Six LGX® compatible trays		19- or 23-in frame, splice and termination combo unit, 144-fiber
LD2	LDC-002	14 x 17 x 11	12	LDC	Six LGX compatible trays		19- or 23-in frame, splice and termination combo unit, 72-fiber
LD5	LDC-005	5 x 17 x 11	4	LDC	One LGX compatible tray		19- or 23-in frame, splice and termination combo unit, 24-fiber
PCH - Connector Housing (PCH)							
PR1	PCH-01U	1.75 x 17 x 16	2	CCH	04 Type 2R 02 Type 4R		19-in standard 23-in sold separately
PR2	PCH-02U	3.5 x 17 x 16	4	CCH	04 Type 2S 04 Type 2R 02 Type 4S or 4R		19-in standard 23-in sold separately
PR4	PCH-04U	7 x 17 x 16	12	CCH	12 Type 2S 06 Type 4S 12 Type 2R 06 Type 4R		19-in standard 23-in sold separately
PWH - Wall-Mountable Housing							
PW2	PWH-02P	9.4 x 17.5 x 4.0	2	CCH	04 Type 2R, 02 Type 4R	Provider door	Wall-mountable
PW4	PWH-04P	14.4 x 21.0 x 5.3	4	CCH	12 Type 2R, 06 Type 4R	Provider door	Wall-mountable
PW6	PWH-06P	14.4 x 21.0 x 5.3	6	CCH	12 Type 2R, 06 Type 4R	Provider door	Wall-mountable
PWC	PWH-12P	14.4 x 32.5 x 5.3	12	CCH	12 Type 2R, 06 Type 4R	Provider door	Wall-mountable

Fiber Optic Hardware with Factory-Installed Pigtails

CORNING

Prefix for Space 1		Housing	Housing Dimensions (H x W x D) in	Maximum Numbers of Panels per Housing	Panel/ Module Type	Splice Tray Options (see Table B)	Locking Availability	Notes
Remote Cabinet Shelf								
RC2	RCS-012	1.75 x 17 x 11	2		FDC			19- or 23-in frame, forward sliding tray 19- or 23-in frame forward sliding tray 19- or 23-in frame, high-density, SC only 19- or 23-in frame, high-density, SC only
RC4	RCS-024	3.5 x 17 x 11	4		FDC			
RH2	RCS-CSH-012	1.75 x 17 x 11	2		FDC-CP1P-123C	2 Type 2S 1 Type 4S		
RH4	RCS-CSH-024	3.5 x 17 x 11	4		FDC-CP1P-123C	4 Type 2S 2 Type 2S		
Single-Panel Housing								
SPH	SPH-01P	6.3 x 5.5 x 2	1		CCH			Wall-mountable
Wall-Building Terminal								
WBT	WBT-012	7 x 15.5 x 4	2		LDC	2 Type 2R 1 Type 4R	Provider door	Wall-mountable, uses standard LDC panels Wall-mountable, uses LHC panels, SC only, 24-fiber
WB4	WBT-024	7 x 15.5 x 4	2		LHC	2 Type 2R 1 Type 4R	Provider door	
Wall-Mountable Connector Housing								
WC4	WCC-048	12 x 20.3 x 3.25	8		FDC		Provider door	Wall-mountable, uses standard FDC unit panels Wall-mountable uses standard FDC unit panels
WC7	WCC-072	12 x 20.3 x 3.25	12		FDC		Provider door	
Wall Distribution Center								
WD1	WDC-001	12.7 x 17.2 x 3	4		FDC	4 Type 2R	Provider door	Wall-mountable, uses standard FDC unit panels Wall-mountable uses standard FDC unit panels
WD2	WDC-002	12.7 x 17.2 x 3	4		FDC	2 Type 4R	Provider door	
WD6	WDC-006	15.5 x 19 x 4	4		LDC	2 Type 4R	Provider door	Wall-mountable uses standard LDC panels and B-size Raychem splice trays

Fiber Optic Hardware with Factory-Installed Pigtails

CORNING

Housing Options

Prefix for Space 1	Housing	Maximum Housing Dimensions (H x W x D) in	Numbers of Panels per Housing	Panel/ Module Type	Splice Tray Options (see Table B)	Locking Availability	Notes
Wall Interconnect Center							
WI4	WIC-024	9.25 x 8.5 x 4.6	4	WIC	2 Type 2R 1 Type 4R		Wall-mountable
Wall-Mountable Connector Housing (WCH)							
WC2	WCH-02P	7.4 x 16.06 x 4.16	2	CCH cassette		N/A	Wall-mountable
WC4	WCH-04P	14.1 x 16.06 x 4.16	4	CCH cassette		N/A	Wall-mountable
WC6	WCH-06P	14.1 x 16.06 x 5.73	6	CCH cassette		N/A	Wall-mountable
WHC	WHC-12P	13.5 x 22.5 x 5.1	12	CCH panels	12 Type 2R 6 Type 4R	Provider door	Wall-mountable

Fiber Optic Hardware with Factory-Installed Pigtails

CORNING

Ordering Information

Table A: Codes for Over 9 or 99

A_ = 10_	H_ = 17_	O_ = 24_	Examples: E4 = 144 M6 = 216 U8 = 288
B_ = 11_	I_ = 18_	P_ = 25_	
C_ = 12_	J_ = 19_	Q_ = 26_	
D_ = 13_	K_ = 20_	R_ = 27_	
E_ = 14_	L_ = 21_	S_ = 28_	
F_ = 15_	M_ = 22_	T_ = 29_	
G_ = 16_	N_ = 23_	U_ = 30_	

Table B: Maximum Fiber Count per Panel based on Panel and Connector Type

Panel Type	Connector Type				
	SC Simplex	SC Duplex	FC	ST® Compatible	LC Duplex
ACH	12	N/A	6	6	24
CCH	12	12	12	12	24
ECL	6	12	6	6	16
LDC	12	12	6	6	24
FDC	12	12	12	12	24
HDF	24	N/A	N/A	N/A	N/A
WIC	8	6	6	8	16

Note: ACH = ACH™ Unit, ECL = Eclipse® Hardware, FDC = FDC® Unit

CORNING

Fiber Optic Hardware with Factory-Installed Pigtails

CORNING

Adapter/Connector Code Options

Adapter Code	Fiber Type	Alignment	Housing	Fiber/ Adapter	Available Fiber/Panel Counts				
					6	8	12	16	24
LC Duplex									
A8	62.5 µm multimode (OM1)	Ceramic	Composite	2	X	X	X	X	X
D3	50 µm multimode (OM2)	Ceramic	Composite	2	X	X	X	X	X
E4	50 µm multimode (OM3/OM4)	Ceramic	Composite	2	X	X	X	X	X
A9	Single-mode, UPC (OS2)	Ceramic	Composite	2	X	X	X	X	X
B3	Single-mode, APC (OS2)	Ceramic	Composite	2	X	X	X	X	X
SC Duplex									
91	62.5 µm multimode (OM1)	Metal	Composite	2	X	X	X		
G7	50 µm multimode (OM2)	Ceramic	Composite	2	X	X	X		
E7	50 µm multimode (OM3/OM4)	Ceramic	Composite	2	X	X	X		
59	Single-mode, UPC (OS2)	Ceramic	Composite	2	X	X	X		
D9	Single-mode, APC (OS2)	Ceramic	Composite	2	X	X	X		
SC									
56	62.5 µm multimode (OM1)	Metal	Composite	1	X	X	X		
G6	50 µm multimode (OM2)	Ceramic	Composite	1	X	X	X		
E6	50 µm multimode (OM3/OM4)	Ceramic	Composite	1	X	X	X		
3C	Single-mode, UPC (OS2)	Ceramic	Composite	1	X	X	X		
6C	Single-mode, APC (OS2)	Ceramic	Composite	1	X	X	X		
ST® compatible connector									
5T	62.5 µm multimode (OM1)	Ceramic	Metal	1	X	X	X		
G5	50 µm multimode (OM2)	Ceramic	Metal	1	X	X	X		
H3	50 µm multimode (OM3/OM4)	Ceramic	Metal	1	X	X	X		
6T	Single-mode, UPC (OS2)	Ceramic	Metal	1	X	X	X		
FC									
11	Single-mode, UPC (OS2)	Metal	Metal	1	X	X	X		
Fiber Type		Housing Color							
62.5 µm multimode (OM1)		Beige							
50 µm multimode (OM2)		Black							
50 µm multimode (OM3/OM4)		Aqua							
Single-mode, UPC (OS2)		Blue							
Single-mode, APC (OS2)		Green							

For keyed LC ordering information, refer to LAN-701-EN.

Fiber Optic Hardware with Factory-Installed Pigtails

CORNING

Splice Tray Options

Splice Tray Code for Pigtailed Part Number*	Splice Tray Type	Splice Tray Part Number	Tray Dimensions (L x W x D) in	Splice Protection Type	Splice Capacity	Notes
2						Splicing capacity reserved for 0.2-in tall trays – trays not included
4						Splicing capacity reserved for 0.4-in tall trays – trays not included
C	2R	M67-060	6.9 x 3.5 x 0.2	Fusion – RTV	12	
J	2R	M67-061	7.3 x 3.5 x 0.2	Mechanical	6	
K	2R	M67-068	7.3 x 3.5 x 0.2	Heat-Shrink Fusion	6	
A	2S	M67-041	11.7 x 3.9 x 0.2	Fusion – RTV	12	
F	2S	M67-048	11.7 x 3.9 x 0.2	Heat-Shrink Fusion	12	
H	2S-Long	M67-112	13.25 x 3.9 x 0.2	Heat-Shrink Fusion (HSF)	24	For use in PCH-02U
D	4R	M67-110	6.9 x 3.5 x 0.4	Heat-Shrink Fusion (HSF) Heat-Shrink Mass Fusion (HSMF)	12 HSF, 6 HSMF (72-fiber)	
P	4S-Wide	M67-078	11.7 x 4.3 x 0.4	Heat-Shrink Fusion (HSF)	24 HSF	For use in PCH-02U
S	4S	M67-118	11.7 x 3.9 x 0.4	Splice Pak™ (Q-pack) Splice Protector	24	Splice holder on opposite end of entry
X	4S	M67-113	11.7 x 3.9 x 0.4	Splice Pak (Q-pack) Splice Protector	12	
L	4S	M67-076	11.7 x 3.9 x 0.4	Heat-Shrink Fusion (HSF) Heat-Shrink Mass Fusion (HSMF)	12 HSF, 6 HSMF (72-fiber)	

For keyed LC ordering information, refer to LAN-701-EN.

2S = 0.2-in tall standard length trays (11.7-in length)

2R = 0.2-in tall reduced length trays (6.9-in length)

4S = 0.4-in tall standard length trays (11.7-in length)

4R = 0.4-in tall reduced length trays (6.9-in length)

4A = 0.4-in tall long splice trays (13-in length)

Corning Optical Communications LLC • 4200 Corning Place • Charlotte, NC • 28216 • United States
800-743-2675 • FAX: 828-325-5060 • International: +1-828-901-5000 • www.corning.com/opcomm

A complete listing of the trademarks of Corning Optical Communications is available at www.corning.com/opcomm/trademarks. All other trademarks are the properties of their respective owners. Corning Optical Communications is ISO 9001 certified.

© 2022 Corning Optical Communications. All rights reserved.

CORNING