

Integrated Single-Panel Housing

CORNING

Features and Benefits

Factory terminated

Eliminates need for field termination, improving reliability and speed of deployment; faster, easier installation and moves, adds and changes

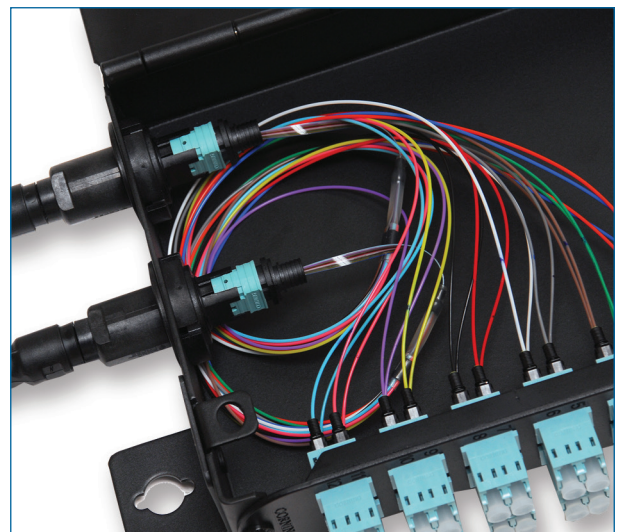
Configurable in 12 and 24 fibers, single-mode and multimode, supporting SC, LC and ST® compatible connectors

Network flexibility

Corning Integrated single-panel housing utilizes the OptiTip® adapter with the small-profile single-panel housing for quick and easy deployment eliminating the need for field-terminated and strain-relieved fiber optic cables. The housing is ideal for star, ring, point-to-point, or zone architectures. Factory-terminated panels provide industry-leading quality and reliability while eliminating the time required for field-termination methods and the need for specialized field-termination tools, training, and specially prepared locations. The compact unit is ideal for use inside NEMA- and IP rated enclosures and other environments where space is a premium.



Integrated Single-Panel Housing (closed)
| Photo LAN1643



Integrated Single-Panel Housing (open)
| Photo LAN1642

Integrated Single-Panel Housing

CORNING

Specifications

	Dimensions (HxWxD)	Shipping Weight
Integrated Single-Panel Housing	16.5 cm x 15.2 cm x 3.8 cm (6.5 in x 6.0 in x 1.5 in)	0.7 kg (1.5 lb)

Ordering Information

Part Number	Description	Units per Delivery
SPH-12OTS-12H3H	Integrated Single-Panel Housing, 12 F, bottom-mounted OptiTip® adapters, front-mounted ST® compatible adapters, 50 µm multimode (OM3)	1/1
SPH-12OTR-1259H	Integrated Single-Panel Housing, 12 F, bottom-mounted OptiTip® adapter, front-mounted SC duplex adapters, Single-mode (OS2)	1/1
SPH-12OTR-126TH	Integrated Single-Panel Housing, 12 F, bottom-mounted OptiTip® adapter, front-mounted ST® compatible adapters, Single-mode (OS2)	1/1
SPH-12OTR-12A9H	Integrated Single-Panel Housing, 12 F, bottom-mounted OptiTip® adapters, front-mounted LC duplex adapters, UPC, Single-mode (OS2)	1/1
SPH-12OTS-12E4H	Integrated Single-Panel Housing, 12 F, bottom-mounted OptiTip® adapters, front-mounted LC duplex adapters, 50 µm multimode (OM3)	1/1
SPH-12OTS-12E7H	Integrated Single-Panel Housing, 12 F, bottom-mounted OptiTip® adapters, front-mounted SC duplex adapters, 50 µm multimode (OM3)	1/1
SPH-24OTR-24A9H	Integrated Single-Panel Housing, 24 F, bottom-mounted OptiTip® adapters, front-mounted LC duplex adapters, Single-mode (OS2)	1/1
SPH-24OTS-24E4H	Integrated Single-Panel Housing, 24 F, bottom-mounted OptiTip® Adapters, front-mounted LC duplex Adapters, 50 µm Multimode (OM3)	1/1



Corning Optical Communications LLC • PO Box 489 • Hickory, NC 28603-0489 USA

800-743-2675 • FAX: 828-325-5060 • International: +1-828-901-5000 • www.corning.com/opcomm

A complete listing of the trademarks of Corning Optical Communications is available at www.corning.com/opcomm/trademarks. All other trademarks are the properties of their respective owners. Corning Optical Communications is ISO 9001 certified.

© 2015 Corning Optical Communications. All rights reserved.

CORNING