

CORNING® REEL RETURN RECYCLING PROGRAM (v.10272021)



I. Reel Return Pick-Up Requirements

- All remaining cable must be removed and all reels must be gathered in the same location for single pick-up
- All reels must be Corning reels and must adhere to the reel conditions specifications as listed in **Appendix A**
- Pick-up requests must meet the minimum full truck loading requirements listed in **Appendix B**
- For help with Corning reel identification see **Appendix C**

II. Reel Return Shipping Terms and Conditions

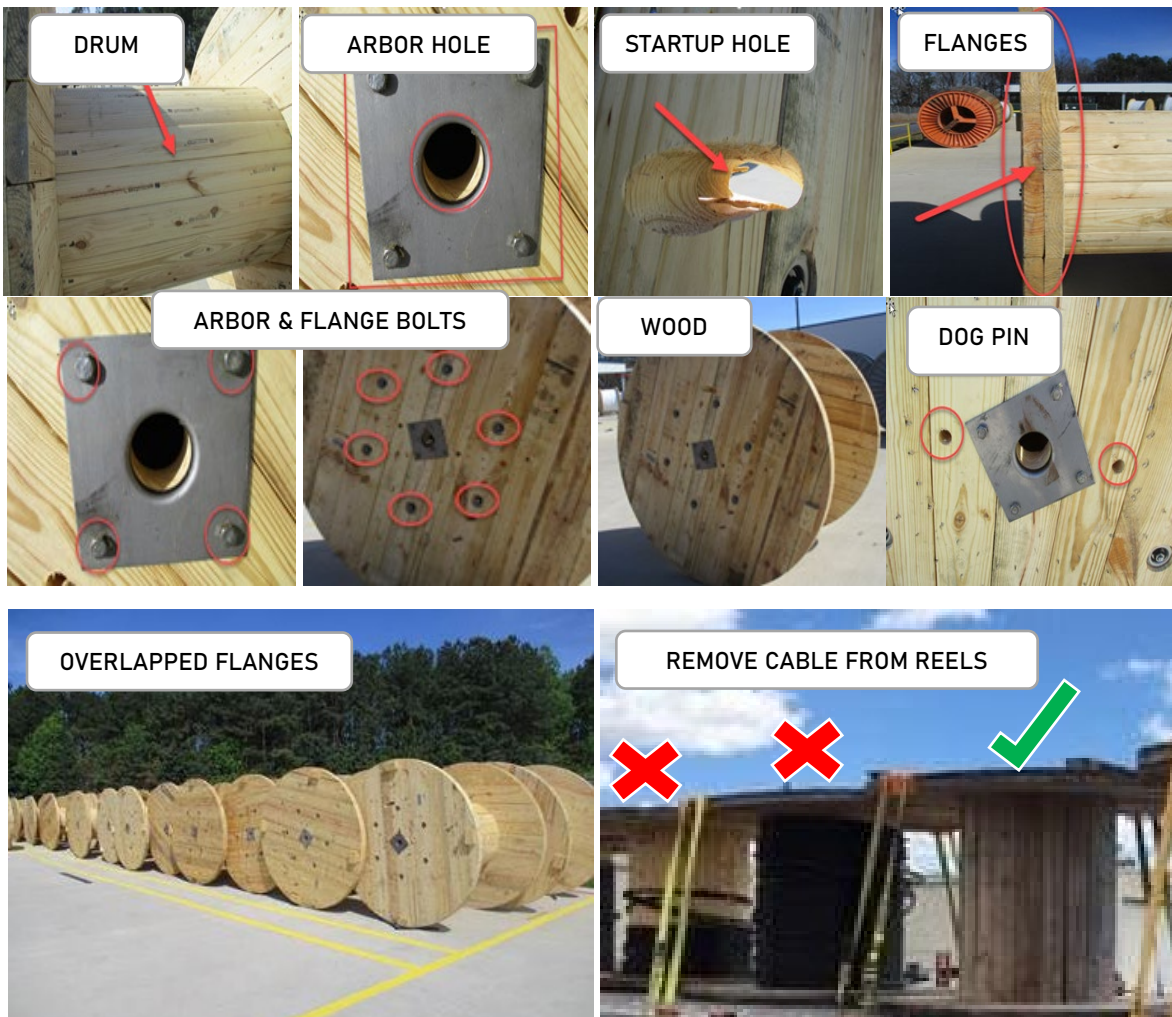
- Steel (metal) reel returns must be shipped freight collect from the domestic United States
- Wood (nonmetal) reel returns must be shipped freight collect from the following States: AL, AR, CT, DE, DC, FL, GA, IL, IN, IA, KY, LA, ME, MD, MA, MI, MS, MO, NH, NJ, NY, NC, OH, PA, RI, SC, TN, VT, VA, WV and WI
- Wood (nonmetal) reel returns must be shipped freight prepaid from the following States: AK, AZ, CA, CO, HI, ID, KS, MN, MT, NE, NV, NM, ND, OK, OR, PR, SD, TX, UT, VI, WA, and WY
- Corning is not responsible for any storage or loading fees associated with the cable reel return process
- Corning reserves the right to change the reel recycling return program requirements and conditions at any time

III. Reel Return Pick-Up Request Form

- Once reels meet the above requirements please contact reelreturn@corning.com with **CORNING REEL RETURN RECYCLING PROGRAM REQUEST** in the email subject line and provide the following information below in the body and attachments of the email:
 1. Pick-up information (restrictions, appointments, instructions), company name and pick-up site address
 2. Contact information (name, e-mail and phone number)
 3. Corning REEL ID Information, size/weight for each reel and total number of reels for pick-up
 4. Picture(s) of reels to be returned including at least one REEL ID tag.
- For any questions on the reel return recycling program please call 877 REEL TRX (877-733-5879) and leave a voicemail with all pertinent information from items 1, 2, and 3 above.

Appendix A – Reel Conditions Specifications

Reel Part	Specification
Drum	Smooth and undamaged. Max of 2 stave boards missing (wood), free from large dents and sharp edges (steel).
Arbor Hole	Smooth with no ragged edges and not twisted. Ferrules pressed tight and flush, plates are flat and secured with bolts and washers that are checked for tightness (air wrench)
Startup Hole	Smooth with no ragged edges
Flanges	Smooth, perpendicular to the drum and not warped. Nails are countersunk and clenched with no protruding nail heads on the inside flange. No cracks greater than 1/2" between flange boards. No excessive dents, burs, holes or projections.
Arbor & Flange bolts	Hardware not broken, missing, stripped, and bolts checked for tightness (air wrench) on wood reels
Wood	Lumber shall be of sound quality, free from holes and decay
Dog pin	Smooth and not wallowed out
Overlapped Flanges	Flanges should be overlapped when loaded onto truck to ensure the maximum number of reels will fit
Remove all cable	Corning's reel vendor cannot recycle cable, so reels must have all the cable removed when recycled
Wood Reel Orientation	Reel flanges need to be arranged in an overlapping manner to fit on the truck
Steel Reel Orientation	Steel reels must stand (as you would roll them) and load side by side, front to rear of the trailer, utilizing the full trailer
Removed Blocks	Not required to attach or include in the return



Do not return non-Corning Reels or reels that fail to meet Reel Conditions Specifications in Appendix A. Example reels that should not be returned are shown below on page 3 and 4:

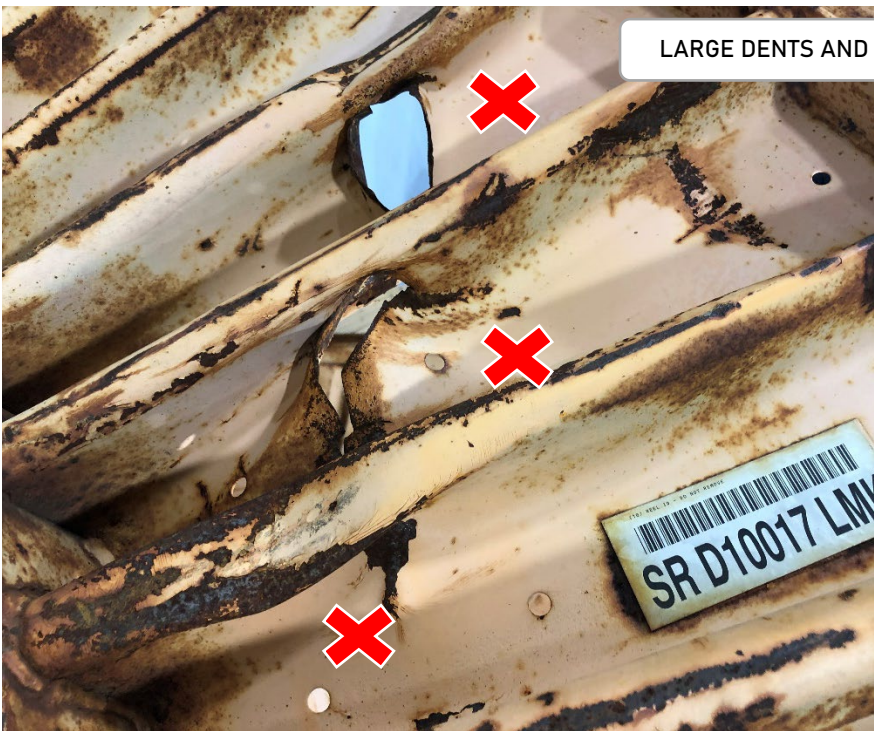




NON-CORNING REEL



DAMAGED REEL WITH LARGE DENTS AND SHARP EDGES



LARGE DENTS AND SHARP EDGES



Appendix B – Minimum Full Truck Loading Requirements by Reel Size

Pick-up requests must meet the Minimum Reel Quantity per Truck Loading shown in the first column of the **Wood Reels** and **Steel Reels** tables below. Requests for multiple reel size combinations must achieve a minimum full truck load. Identify each CORNING reel by the first 5 (wood) or 3 (steel) characters of the REEL ID tag found on the outside flange.

Example: Each pick-up request for 72" Wood Reels (WO72Rxxxxxx) must consist of 12 reels per truck loading

Wood Reels

Minimum Reel Quantity per Truck Loading	First 5 Characters of REEL ID	Part Number	Weight (lb.)	Dimensions (in.)
18	WO36R	R96-05-40	119	38 x 44 x 39
18	WO42R	R96-05-42	165	50 x 44 x 45
26	WO42N	R96-05-41	165	50 x 44 x 45
18	WO48R	R96-05-43	284	50 x 44 x 51
18	WO48F	R96-05-44	284	50 x 44 x 51
14	WO54R	R96-05-45	313	64 x 44 x 57
14	WO60R	R96-05-46	403	64 x 40 x 63
14	WO60F	R96-05-48	403	64 x 40 x 63
14	WO66R	R96-05-47	476	68 x 44 x 69
12	WO72R	R96-05-31	777	74 x 50 x 75
10	WO78R	R96-05-33	970	82 x 58 x 81
6	WO78E	R96-05-35	979	82 x 58 x 81
6	WO90R	R96-05-36	1210	90 x 50
6	WO96R	R96-05-37	1435	96 x 52
6	WO96E	R96-05-34	1444	96 x 58

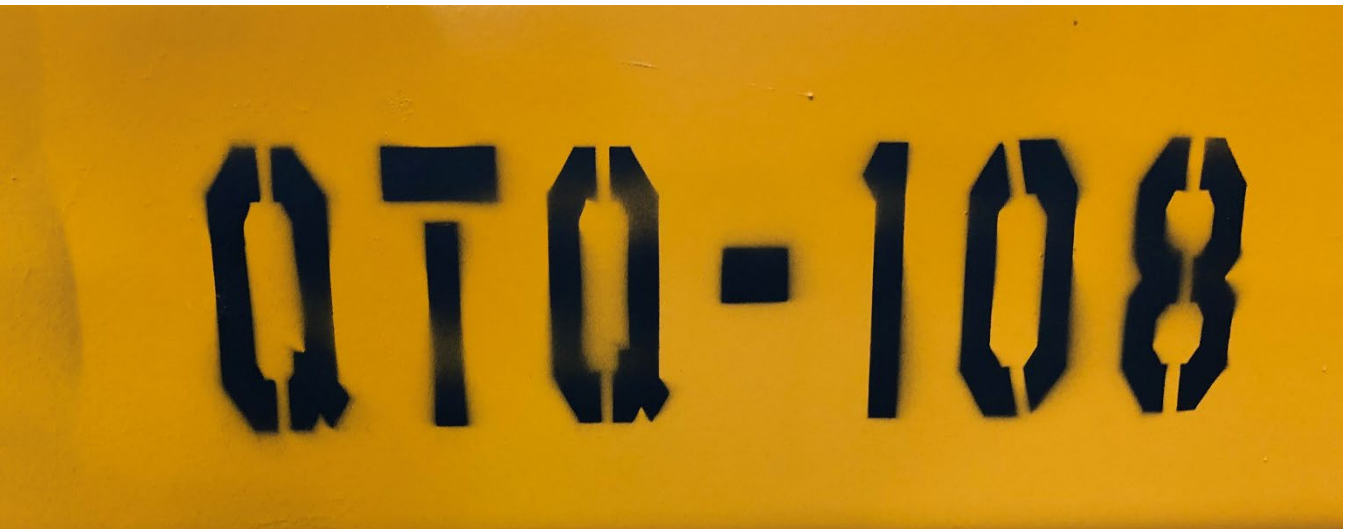
Steel Reels

Minimum Reel Quantity per Truck Loading	First 3 Characters of REEL ID	Part Number	Weight (lb.)	Dimensions (in.)
18	SRH (45)	R96-10-07	204	50 x 40 x 50
18	SRJ (48)	R96-10-06	246	54 x 40 x 50
18	SRA (50)	R96-09-01	250	56 x 40 x 50
14	SRB (56)	R96-09-02	270	62 x 40 x 64
14	SRM (60)	R96-10-13	350	66 x 40 x 64
12	SRL (66)	R96-10-12	460	72 x 44 x 68
12	SRS (66)	R96-10-30	540	72 x 44 x 68
12	SRK (72)	R96-10-09	572	74 x 50 x 75
10	SRC (78)	R96-09-03	550	82 x 58 x 81
10	SRQ (78)	R96-10-26	848	82 x 58 x 81
10	SRE (78)	R96-10-08	620	82 x 58 x 81
10	SRT (78)	R96-10-31	620	82 x 58 x 81
10	SRD (83)	R96-09-04	795	83 1/8 x 46 3/4
10	SRF (84)	R96-10-11	840	83 3/8 x 59
6	SRG (96)	R96-10-10	1041	96 x 60
6	SRN (96)	R96-10-23	980	96 x 48
6	SRP (96)	R96-10-25	1075	96 x 60
6	SRR (96)	R96-10-29	1275	96 x 52
3	SRU (108)	R96-10-28	1352	108 x 68

Appendix C – Corning Reel Identification

Wood Reels have **CORNING** labeled on the side of at least one flange and additional markings may be present.



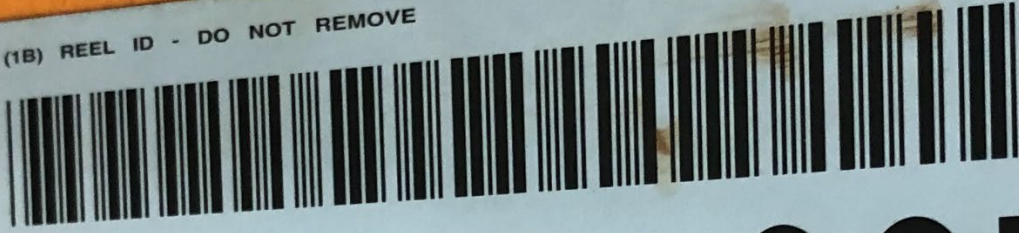


REEL ID Tags are located on the side of at least one flange. The first 5 (wood) or 3 (steel) characters should be evaluated against the **Minimum Reel Quantity per Truck Loading** tables in **Appendix B** to determine flange size, dimensions, and minimum loading quantities. Examples shown below.





(1B) REEL ID - DO NOT REMOVE



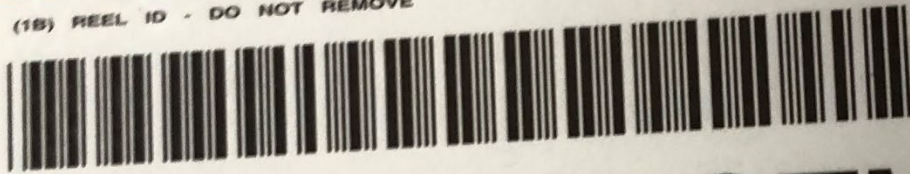
SR G10359 OQL

(1B) REEL ID - DO NOT REMOVE



SR P10594 OQN

(1B) REEL ID - DO NOT REMOVE



SR U00002 QTN