

# Split Duct Kits for Cable Installation

## AEN 167, Revision 0

The purpose of split duct kits is to provide a selection of ducts that would typically be used in small vaults with 2-inch entrance ducts and large vaults or manholes with 4-inch entrance ducts to allow for cable installation. This saves time during placing operations by eliminating customizing ducts in the field or modifying other equipment. Once set up, **the split ducts ensure that the cable minimum bend radius is maintained, and the cable does not press against a manhole or vault edge**. The split ducts are reusable and for unique situations optional pieces are available. As with any equipment, inspect before each use for any loose bolts or other problems. Order directly from Highland:

### **Section 1: MDPE – Split Duct Kits by Highland Valley Supply Company**

#### **How to Order:**

By Phone- Call Highland Valley Supply at 877-803-1478

By Email- Send email to [sales@highlandvalley.com](mailto:sales@highlandvalley.com)

By Fax- Fax to Highland Valley Supply at 877-678-8003

### **Highland - Split Duct Cable Installation Guidelines**

Typical Configurations – 2-inch Split Ducts

Highland Vault Kit PN: Vaultkit2

Two Inch Split Ducts used to guide cable into or out of vaults:

1. Tugger located at the rear of a vault ranging from the vault wall edge to approximately 4 feet from the edge:

Use 2-inch duct PN HDPE20450272 (45° x 24-inch tangent x 72 inches) and 2-inch coupler (PN SL237-12).



© 2019 Corning Incorporated. All Rights Reserved.

AEN 167, Revision 0 - Page 2 of 22

© 2019 Corning Optical Communications LLC. All rights reserved

Published: 04/10/2019

CORNING



Note: 72-inch duct is installed with 24-inch tangent attached to vault entry duct and 48-inch straight section extended to beyond end of vault. When the tugger is placed at the edge of the vault then use the same 72-inch duct with the 48-inch straight section attached with a coupler to the entry duct.

2. Tugger over the vault at center:

Use 2-inch duct PN HDPE2045035 (45° x 42-inch) and 2-inch coupler PN SL237-12





3. Tugger perpendicular to the vault at center:

Use 2-inch duct PN HDPE204513 (45° x 24-inch tangent x 36 inches) and 2-inch coupler PN SL237-12





© 2019 Corning Incorporated. All Rights Reserved.

AEN 167, Revision 0 - Page 6 of 22

© 2019 Corning Optical Communications LLC. All rights reserved

Published: 04/10/2019

CORNING



Note: Two-inch split ducts that are typically used are included in kit PN: Vaultkit2. Optional sizes of split ducts are also available and can be ordered from Highland. See ordering info below.

Couplers are secured with Deltec straps or tie wraps.

## **Typical Configurations – 4-inch Split Ducts**

Four-Inch Split Ducts used to guide cable into or out of large data center vaults or manholes:

1. Highland Data Center (Large Vault) Kit PN: DCKIT4
2. Highland Manhole Kit PN: MHKIT4

4-inch split duct kits contain typical sizes that are used for cable installation in larger data center type vaults and manholes. Optional other size split ducts are also available and can be ordered from Highland. See ordering info below.

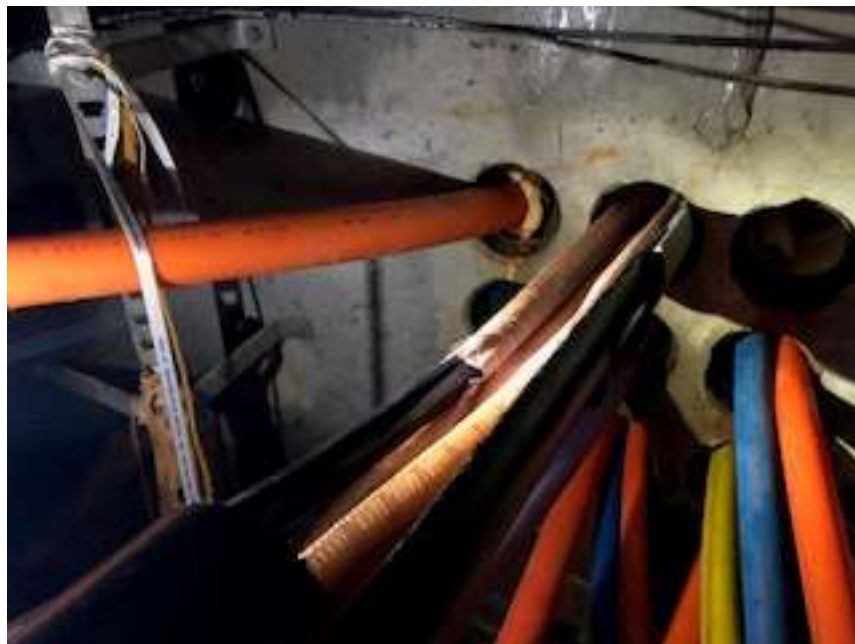
Below are some set-ups of 4-inch ducts. Note that the split duct with a 2-foot access window allows for cases when MaxCell is used and other cables are already installed in the same duct.

Couplers are secured with Deltec straps or tie wraps.









© 2019 Corning Incorporated. All Rights Reserved.

AEN 167, Revision 0 - Page 10 of 22

© 2019 Corning Optical Communications LLC. All rights reserved

Published: 04/10/2019

CORNING







Representative split ducts above

### **How to Order:**

© 2019 Corning Incorporated. All Rights Reserved.

AEN 167, Revision 0 - Page 12 of 22

© 2019 Corning Optical Communications LLC. All rights reserved

Published: 04/10/2019

# CORNING

By Phone- Call Highland Valley Supply at 877-803-1478

By Email- Send email to [sales@highlandvalley.com](mailto:sales@highlandvalley.com)

By Fax- Fax to Highland Valley Supply at 877-678-8003

## **Available Split-Duct Kits:**

### **Data Center Kit – 4-Inch**

### **Part No. DCKIT4**

Description: 4-inch Data Center Kit, for large vaults with large access.

Includes:

1. 4- **SL400-12** (4" HDPE Coupling, 12" Long, Split)
2. 1- **HDPE40-2R** (4" HDPE 2' Long Piece, Split)
3. 1- **HDPE40-4R** (4" HDPE 4' Long Piece, Split)
4. 1- **HDPE4064-R** (4" HDPE Window x 72" Cut Length, Split)
5. 2- **HDPE404503** (4" HDPE x 45 Degree x 36" Cut Length, Split)
6. 1- **HDPE403006** (4" HDPE x 30 Degree x 72" Cut Length, Split)



### **Manhole Kit- 4 Inch**

### **Part No. MHKIT4**

Description: 4-Inch Manhole Kit, for manholes with 32" round covers, or similar opening.

Includes:

1. 4- **SL400-12** (4" HDPE Coupling, 12" Long, Split)
2. 1- **HDPE40-2R** (4" HDPE 2' Long Piece, Split)
3. 1- **HDPE40-4R** (4" HDPE 4' Long Piece, Split)
4. 2- **HDPE404503** (4" HDPE x 45 Degree x 36" Cut Length, Split)
5. 1- **HDPE403006** (4" HDPE x 30 Degree x 72" Cut Length, Split)
6. 1- **HDPE4090080** (4" HDPE x 90 Degree x 64" Cut Length, Split)
7. 1- **HDPE4042-R** (4" HDPE Window x 46" Cut Length, Split)

### **Vault Kit – 2-Inch**

### **Part No. VAULTKIT2**

Description: 2-Inch Vault Kit

Includes:

1. 1- **SL237-12** (2" HDPE Coupling, 12" Long, Split)
2. 1- **HDPE204513** (2" HDPE x 45 Degree x 1' Tangent x 36" Cut Length, Split)
3. 1- **HDPE2045035** (2" HDPE x 45 Degree x 42" Cut Length, Split)
4. 1- **HDPE20450272** (2" HDPE x 45 Degree x 2' Tangent x 72" Cut Length, Split)

### **4-Inch Optional Pieces - Can be ordered individually**

Description: Additional 4-Inch material to be used if needed

Includes-

1. 1- **SL400-12** (4" HDPE Coupling, 12" Long, Split)
2. 1- **HDPE40-2R** (4" HDPE 2' Long Piece, Split)
3. 1- **HDPE40-4R** (4" HDPE 4' Long Piece, Split)
4. 1- **HDPE40-6R** (4" HDPE 6' Long Piece, Split)
5. 1- **HDPE404503** (4" HDPE x 45 Degree x 36" Cut Length, Split)
6. 1- **HDPE4090080** (4" HDPE x 90 Degree x 64" Cut Length, Split)
7. 1- **HDPE4042-R** (4" HDPE Window x 46" Cut Length, Split)

## **2-Inch Optional Pieces - Can be ordered individually**

Description: Additional 2-Inch material to be used if needed

Includes-

1. 1- **SL237-12** (2" HDPE Coupling, 12" Long, Split)
2. 1- **HDPE2045035** (2" HDPE x 45 Degree x 42" Cut Length, Split)
3. 1- **HDPE203002** (2" HDPE x 30 Degree x 24" Cut Length, Split)
4. 1- **HDPE20-2R** (2" HDPE 2' Long Piece, Split)
5. 1- **HDPE20-4R** (2" HDPE 4' Long Piece, Split)
6. 1- **HDPE20-6R** (2" HDPE 6' Long Piece, Split)

## **Section 2: Steel – Split Ducts by GPM Company**

### **GMP split feeders and split feeder extensions:**

**Split (Flexible Steel) Ducts** are available in 4 inch diameter from GMP Company for use in large vaults and manholes. These split flexible cable guides (“Elephant Trunks”) allow for entry and exit of cables in manholes. The 90-inch main is used as the first section with a nozzle that is inserted into the entry 4-inch duct. Length is extended by adding additional sections of 90-inch or 36-inch extender pieces.

<https://www.gmptools.com/split-cable-feeder/>

<https://www.gmptools.com/cable-feeder-nozzles/>

90-inch split main – PN 88830

90-inch split extension – PN 88832

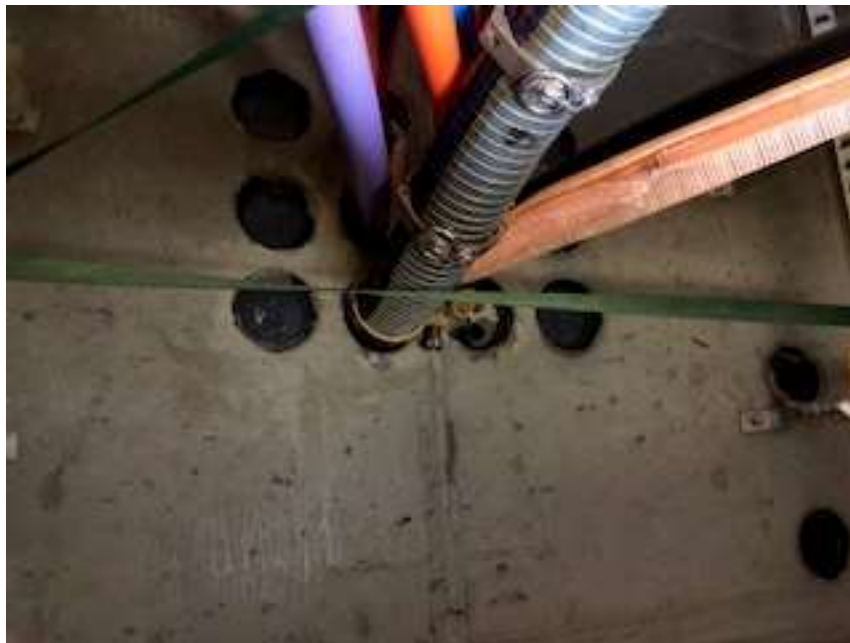
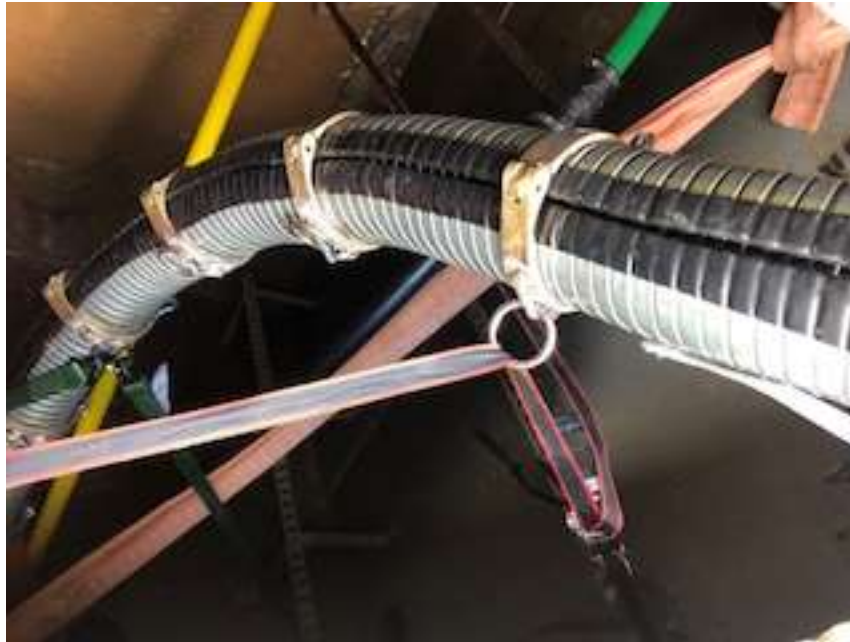
36-inch split extension – PN 88831

4-inch split nozzle – PN 60596

Note: Bend radius of 20+ inches will be maintained by the ducts.

How to order: <https://www.gmptools.com/where-to-buy/>

## Typical Configurations of Split Metal Ducts:





© 2019 Corning Incorporated. All Rights Reserved.

AEN 167, Revision 0 - Page 18 of 22

© 2019 Corning Optical Communications LLC. All rights reserved

Published: 04/10/2019

CORNING







© 2019 Corning Incorporated. All Rights Reserved.

AEN 167, Revision 0 - Page 20 of 22

© 2019 Corning Optical Communications LLC. All rights reserved

Published: 04/10/2019

CORNING







© 2019 Corning Incorporated. All Rights Reserved.

AEN 167, Revision 0 - Page 22 of 22

© 2019 Corning Optical Communications LLC. All rights reserved

Published: 04/10/2019

CORNING