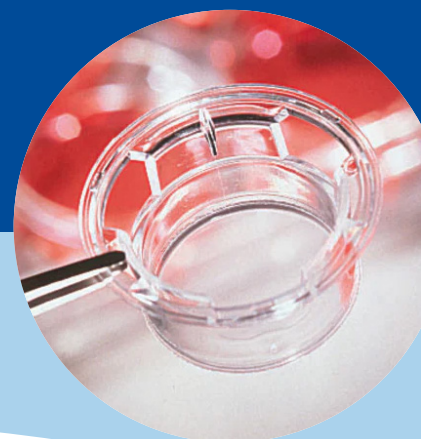
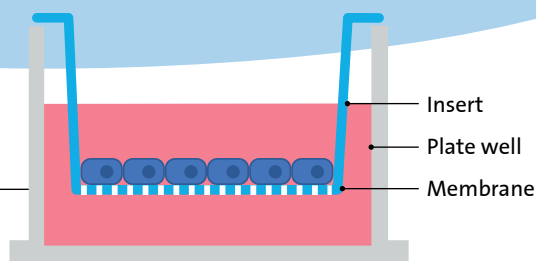


Corning® Transwell® Permeable Supports: The Lab's Multi-Tool



Scientific investigations are the backbone of research efforts, and reliable tools are a vital part of ensuring that work is accurate and reproducible. When it comes to equipment that helps scientists reach that goal, **Corning® Transwell® permeable supports** act as a multi-tool useful in a variety of bench-side activities.



Innovative Design

Corning Transwell permeable supports are designed to fit a wide range of research efforts and are available in 3 materials: Polycarbonate, Polyester, and Polytetrafluoroethylene.

Permeable supports are used to separate a top cell culture chamber from a bottom chamber. This allows for specialized applications where compound or cell movement between the chambers can be investigated. Additionally, cells growing on the membrane orient themselves naturally, as they would *in vivo*.

Wide-ranging Functions

Transwell permeable supports enable a variety of research techniques that aren't possible with other cell culture tools. These membranes offer the most benefits in the following areas:



Air-liquid interface (ALI): Permeable supports allow researchers to study tissues that would normally be exposed to air, such as eye, lung, and skin tissue. This capability enables cells to organize and differentiate as they would *in vivo*.



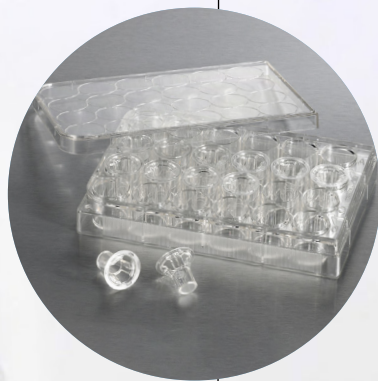
Drug transport: Organ-specific monolayers grown on Transwell membranes allow researchers to study how organs absorb, metabolize, or transport drugs or food.



Migration/invasion: Permeable supports allow investigators to replicate the spread of cancer or the movement of immune cells to the site of an injury.

Multi-size Construction

Transwell permeable supports are not a one-size-fits-all tool. The 6-well plates are available for lower throughput projects, while **12-well, 24-well, or 96-well plates** are available for higher throughput projects, such as drug screening.



Importance to Research

Membranes can enhance investigations by:

- Enabling cells to polarize and form both an inside and outside.
- Allowing for diverse investigations with multiple membrane types, pore sizes, formats, and coatings.
- Supporting multiple experiments simultaneously to save time and produce higher quality, more consistent data.

Learn more about
Corning permeable supports.

CORNING

Warranty/Disclaimer: Unless otherwise specified, all products are for research use or general laboratory use only. Not intended for use in diagnostic or therapeutic procedures. Not for use in humans. For a listing of US medical devices, regulatory classifications or specific information on claims, visit www.corning.com/resources.

For a listing of trademarks, visit www.corning.com/clstrademarks. All other trademarks are the property of their respective owners.

©2025 Corning Incorporated. All rights reserved 2/25 CLS-AN-849