

Corning Cell Culture Products

Featuring Corning® Media and Specialized Surfaces

CORNING



Beginning-to-End Cell Culture Solutions from Corning

Corning is proud to offer a portfolio of cell culture solutions to our customers. That's why we offer you a comprehensive portfolio of vessels, advanced surfaces, and cell culture media. We will work with you one-on-one to help you make the most of Corning products – from start-up to scale-up. And that's why scientists like you around the world count on Corning to help them generate consistent, reliable, and reproducible results.

Table of Contents

Corning Media	3
Corning Other Media and Sera Products	6
Cell Culture Surfaces	13
Cell Culture Flasks.	14
Cell Culture Dishes	16
Multiwell Plates	16
Cell Culture Filtration.	17
Liquid Handling	19

Product Ordering Information

For information on Purchasing Options, Terms and Conditions of Sale, Return and Repair Policies, and Warranty/Guarantee Registration, visit www.corning.com/how-to-buy.

Product may not be available in all markets.





Corning products are manufactured following current Good Manufacturing Processes (cGMP) under 21 CFR Part 820, Quality System Regulation and ISO 13485 certification for a quality management system.

DMEM (Dulbecco's Modified Eagle's Medium)

- DMEM is a modification of BME (Basal Medium Eagle) containing additional amino acids and vitamins
- Ideal for embryonic mouse cells and a variety of normal and transformed cells, such as primary cultures of mouse and chicken cells

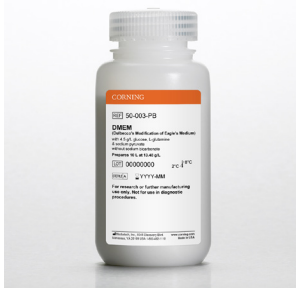
Liquid

Cat. No.	Description	Storage	Shelf Life	Size	Qty/Pk
10-013-CV	[+] 4.5 g/L Glucose, L-glutamine, sodium pyruvate	2°C to 8°C	18 m	500 mL	6
10-013-CM	[+] 4.5 g/L Glucose, L-glutamine, sodium pyruvate	2°C to 8°C	18 m	1L	6
10-013-LX	[+] 4.5 g/L Glucose, L-glutamine, sodium pyruvate	2°C to 8°C	18 m	10L	1
10-013-LB	[+] 4.5 g/L Glucose, L-glutamine, sodium pyruvate	2°C to 8°C	18 m	20L	1
10-014-CV	[+] 1.0 g/L Glucose, sodium pyruvate, L-glutamine	2°C to 8°C	18 m	500 mL	6
10-014-CM	[+] 1.0 g/L Glucose, sodium pyruvate, L-glutamine	2°C to 8°C	18 m	1L	6
10-017-CV	[+] 4.5 g/L Glucose, L-glutamine; [-] sodium pyruvate	2°C to 8°C	18 m	500 mL	6
10-017-CM	[+] 4.5 g/L Glucose, L-glutamine; [-] sodium pyruvate	2°C to 8°C	18 m	1L	6
10-027-CV	[+] 25 mM HEPES, 4.5 g/L glucose, L-glutamine; [-] sodium pyruvate	2°C to 8°C	18 m	500 mL	6
10-101-CV	[+] Corning glutagro™ supplement, 4.5 g/L glucose, sodium pyruvate, phenol red	2°C to 8°C	12 m	500 mL	6
10-102-CV	[+] Corning glutagro supplement, 4.5 g/L glucose, phenol red; [-] sodium pyruvate	2°C to 8°C	12 m	500 mL	6
15-013-CV	[+] 4.5 g/L Glucose, sodium pyruvate; [-] L-glutamine	2°C to 8°C	18 m	500 mL	6
15-013-CM	[+] 4.5 g/L Glucose, sodium pyruvate; [-] L-glutamine	2°C to 8°C	18 m	1L	6
15-013-LX	[+] 4.5 g/L Glucose, sodium pyruvate; [-] L-glutamine	2°C to 8°C	18 m	10L	1
15-013-LB	[+] 4.5 g/L Glucose, sodium pyruvate; [-] L-glutamine	2°C to 8°C	18 m	20L	1
15-017-CV	[+] 4.5 g/L Glucose; [-] L-glutamine, sodium pyruvate	2°C to 8°C	18 m	500 mL	6
15-017-CM	[+] 4.5 g/L Glucose; [-] L-glutamine, sodium pyruvate	2°C to 8°C	18 m	1L	6
15-018-CV	[+] 4.5 g/L Glucose, sodium pyruvate, 25 mM HEPES; [-] L-glutamine	2°C to 8°C	18 m	500 mL	6
15-018-CM	[+] 4.5 g/L Glucose, sodium pyruvate, 25 mM HEPES; [-] L-glutamine	2°C to 8°C	18 m	1L	6
17-204-CI	[+] 4.5 g/L Glucose, sodium pyruvate; [-] L-glutamine, L-methionine, L-cystine	2°C to 8°C	18 m	100 mL	6
17-205-CV	[+] 4.5 g/L Glucose, sodium pyruvate; [-] L-glutamine, phenol red	2°C to 8°C	18 m	100 mL	6
17-207-CV	[-] Glucose, L-glutamine, sodium pyruvate	2°C to 8°C	18 m	500 mL	6

Powder

Cat. No.	Description	Storage	Shelf Life	Size*	Qty/Pk
50-003-PB	[+] 4.5 g/L Glucose, L-glutamine, sodium pyruvate; [-] sodium bicarbonate	2°C to 8°C	36 m	10L	1
50-003-PC	[+] 4.5 g/L Glucose, L-glutamine, sodium pyruvate; [-] sodium bicarbonate	2°C to 8°C	36 m	50L	1
50-013-PB	[+] 4.5 g/L Glucose, L-glutamine; [-] sodium pyruvate, sodium bicarbonate	2°C to 8°C	36 m	10L	1
50-013-PC	[+] 4.5 g/L Glucose, L-glutamine; [-] sodium pyruvate, sodium bicarbonate	2°C to 8°C	36 m	50L	1
90-013-PB	[+] 4.5 g/L Glucose; [-] sodium bicarbonate, L-glutamine, sodium pyruvate, phenol red	2°C to 8°C	36 m	10L	1
90-113-PB	[-] Sodium bicarbonate, glucose, L-glutamine, sodium pyruvate, phenol red	2°C to 8°C	36 m	10L	1

*Powder media volume indicated is the reconstituted volume.





Ham's F-12 Medium

Originally formulated for the serum-free culture of CHO cells, Ham's F-12 can be used for culturing carcinoma cells, rat skeletal myoblasts, Chinese hamster lung cells, and rat, rabbit and chicken embryos.

Liquid

Cat. No.	Description	Storage	Shelf Life	Size*	Qty/Pk
10-080-CV	[+] L-glutamine	2°C to 8°C	12 m	500 mL	6
10-080-CM	[+] L-glutamine	2°C to 8°C	12 m	1L	6

Powder

50-040-PB	[+] L-glutamine; [-] sodium bicarbonate	2°C to 8°C	36 m	10L	1
-----------	---	------------	------	-----	---

*Powder media volume indicated is the reconstituted volume.

DMEM/Ham's F-12 50/50 Mix (Mod.)

Is ideal for culture of a variety of cell types under low serum conditions.

Liquid

Cat. No.	Description	Storage	Shelf Life	Size*	Qty/Pk
10-090-CV	[+] L-glutamine	2°C to 8°C	12 m	500 mL	6
10-090-CM	[+] L-glutamine	2°C to 8°C	12 m	1L	6
10-092-CV	[+] L-glutamine, 15 mM HEPES	2°C to 8°C	12 m	500 mL	6
10-092-CM	[+] L-glutamine, 15 mM HEPES	2°C to 8°C	12 m	1L	6
16-405-CV	[+] L-glutamine; [-] phenol red	2°C to 8°C	12 m	500 mL	6
15-090-CV	[-] L-glutamine	2°C to 8°C	18 m	500 mL	6
15-090-CM	[-] L-glutamine	2°C to 8°C	18 m	1L	6
10-103-CV	[+] Corning glutagro™ supplement	2°C to 8°C	12 m	500 mL	6

Powder

90-090-PB	[-] sodium bicarbonate, L-glutamine, phenol red	2°C to 8°C	36 m	10L	6
90-091-PB	[-] sodium bicarbonate, L-glutamine	2°C to 8°C	36 m	10L	6

*Powder media volume indicated is the reconstituted volume.

MEM (Minimum Essential Medium)

- Modified from BME to have higher concentrations of amino acids to more closely approximate the protein composition of mammalian cells
- Used for cells grown in monolayers, such as fibroblasts

Liquid

Cat. No.	Description	Storage	Shelf Life	Size	Qty/Pk
10-009-CV	[+] Sodium bicarbonate, NEAA, L-glutamine, sodium pyruvate	2°C to 8°C	18 m	500 mL	6
10-010-CV	[+] Earle's salts, L-glutamine	2°C to 8°C	18 m	500 mL	6
10-010-CM	[+] Earle's salts, L-glutamine	2°C to 8°C	18 m	1L	6
15-010-CV	[+] Earle's salts; [-] L-glutamine	2°C to 8°C	18 m	500 mL	6
15-010-CM	[+] Earle's salts; [-] L-glutamine	2°C to 8°C	18 m	1L	6
15-015-CV	[-] L-glutamine, calcium, magnesium	2°C to 8°C	18 m	500 mL	6
17-305-CV	[+] Earle's salts; [-] L-glutamine, phenol red	2°C to 8°C	18 m	500 mL	6



MEM (Minimum Essential Medium) (continued)

Powder

Cat. No.	Description	Storage	Shelf Life	Size*	Qty/Pk
50-010-PB	[+] Earle's salts, L-glutamine; [-] sodium bicarbonate	2°C to 8°C	36 m	10L	1
50-010-PC	[+] Earle's salts, L-glutamine; [-] sodium bicarbonate	2°C to 8°C	36 m	50L	1
50-011-PB	[+] Earle's salts, L-glutamine, NEAA; [-] sodium bicarbonate	2°C to 8°C	36 m	10L	1
50-011-PC	[+] Earle's salts, L-glutamine, NEAA; [-] sodium bicarbonate	2°C to 8°C	36 m	50L	1
51-010-PC	[+] Earle's salts; [-] sodium bicarbonate, L-glutamine	2°C to 8°C	36 m	50L	1
90-009-PB	[+] Earle's salts; [-] L-glutamine, phenol red, sodium bicarbonate	2°C to 8°C	36 m	10L	1

*Powder media volume indicated is the reconstituted volume.

MEM Alpha Medium

- MEM Alpha is a form of MEM more closely mimicking the protein composition of mammalian cells
- Used for the cultivation of cells grown in monolayers, such as fibroblasts

Liquid

Cat. No.	Description	Storage	Shelf Life	Size*	Qty/Pk
10-022-CV	[+] Earle's salts, ribonucleosides, deoxyribonucleosides, L-glutamine	2°C to 8°C	12 m	500 mL	6
15-012-CV	[+] Earle's salts; [-] ribonucleosides, deoxyribonucleosides, L-glutamine	2°C to 8°C	18 m	500 mL	6

Powder

50-012-PC	[+] Earle's salts, L-glutamine; [-] ribonucleosides, deoxyribonucleosides, sodium bicarbonate	2°C to 8°C	36 m	50L	1
-----------	---	------------	------	-----	---

*Powder media volume indicated is the reconstituted volume.

RPMI 1640

- Modification of McCoy's 5A designed for cancer cell culture
- Used for mammalian myeloma and hybridoma cells such as mouse hybridomas, human leukocytes, B and T lymphocytes

Liquid

Cat. No.	Description	Storage	Shelf Life	Size*	Qty/Pk
10-040-CV	[+] L-glutamine	2°C to 8°C	18 m	500 mL	6
10-040-CM	[+] L-glutamine	2°C to 8°C	18 m	1L	6
10-040-LX	[+] L-glutamine	2°C to 8°C	18 m	10L	6
10-040-LB	[+] L-glutamine	2°C to 8°C	18 m	20L	6
10-041-CV	[+] L-glutamine and 25 mM HEPES	2°C to 8°C	18 m	500 mL	6
10-041-CM	[+] L-glutamine and 25 mM HEPES	2°C to 8°C	18 m	1L	6
10-043-CV	[+] L-glutamine; [-] glucose	2°C to 8°C	18 m	500 mL	6
10-104-CV	[+] Corning glutagro™ supplement, phenol red	2°C to 8°C	18 m	500 mL	6
15-040-CV	[-] L-glutamine	2°C to 8°C	18 m	500 mL	6
15-040-CM	[-] L-glutamine	2°C to 8°C	18 m	1L	6
15-040-LB	[-] L-glutamine	2°C to 8°C	18 m	20L	1
15-041-CV	[+] 25 mM HEPES; [-] L-glutamine	2°C to 8°C	18 m	500 mL	6
17-104-CI	[-] L-glutamine, L-methionine, L-cystine	2°C to 8°C	18 m	100 mL	6
17-105-CV	[-] L-glutamine, phenol red	2°C to 8°C	18 m	500 mL	6

Powder

50-020-PB	[+] L-glutamine; [-] sodium bicarbonate	2°C to 8°C	36 m	10L	1
50-020-PC	[+] L-glutamine; [-] sodium bicarbonate	2°C to 8°C	36 m	50L	1
90-022-PB	[-] L-glutamine, phenol red, sodium bicarbonate	2°C to 8°C	36 m	10L	1

*Powder media volume indicated is the reconstituted volume.



CORNING® OTHER MEDIA AND SERA PRODUCTS



Buffered Salt Solutions

Buffered salt solutions are made to a physiological pH and salt concentration. They help to maintain cultures at physiological pH and osmotic pressure and are also used for washing tissues and cells.

DPBS (Dulbecco's Phosphate Buffered Saline)

Liquid

Cat. No.	Description	Storage	Shelf Life	Size*	Qty/Pk
20-030-CV	[+] Calcium and magnesium, 10X	2°C to 30°C	18 m	500 mL	6
20-031-CV	[-] Calcium and magnesium, 10X	2°C to 30°C	18 m	500 mL	6
21-030-CV	[+] Calcium and magnesium, 1X	2°C to 30°C	36 m	500 mL	6
21-030-CM	[+] Calcium and magnesium, 1X	2°C to 30°C	36 m	1L	6
21-031-CV	[-] Calcium and magnesium, 1X	2°C to 30°C	36 m	500 mL	6
21-031-CM	[-] Calcium and magnesium, 1X	2°C to 30°C	36 m	1L	6
21-031-LX	[-] Calcium and magnesium, 1X	2°C to 30°C	36 m	10L	1
21-031-LB	[-] Calcium and magnesium, 1X	2°C to 30°C	36 m	20L	1

Powder

55-031-PB	[-] Calcium and magnesium	2°C to 8°C	36 m	10L	1
55-031-PC	[-] Calcium and magnesium	2°C to 8°C	36 m	50L	1

*Powder media volume indicated is the reconstituted volume.

PBS (Phosphate Buffered Saline)

Liquid

Cat. No.	Description	Storage	Shelf Life	Size	Qty/Pk
21-040-CV	[-] Calcium and magnesium, pH 7.4 ± 0.1, 1X	2°C to 30°C	24 m	500 mL	6
21-040-CM	[-] Calcium and magnesium, pH 7.4 ± 0.1, 1X	2°C to 30°C	24 m	1L	6
21-040-CMX12	[-] Calcium and magnesium, pH 7.4 ± 0.1, 1X	2°C to 30°C	24 m	1L	12

HBSS (Hank's Balanced Salt Solution)

Liquid

Cat. No.	Description	Storage	Shelf Life	Size*	Qty/Pk
20-021-CV	[-] Sodium bicarbonate, calcium, magnesium, 10X	2°C to 30°C	36 m	500 mL	6
20-023-CV	[+] Calcium, magnesium; [-] phenol red, sodium bicarbonate, 10X	2°C to 30°C	36 m	500 mL	6
21-020-CV	[+] Calcium, magnesium, 1X	2°C to 30°C	36 m	500 mL	6
21-020-CM	[+] Calcium, magnesium, 1X	2°C to 30°C	36 m	1L	6
21-021-CV	[-] Calcium, magnesium, 1X	2°C to 30°C	36 m	500 mL	6
21-021-CM	[-] Calcium, magnesium, 1X	2°C to 30°C	36 m	1L	6
21-022-CV	[-] Calcium, magnesium, phenol red, 1X	2°C to 30°C	36 m	500 mL	6
21-022-CM	[-] Calcium, magnesium, phenol red, 1X	2°C to 30°C	36 m	1L	6
21-023-CV	[+] Calcium, magnesium; [-] phenol red, 1X	2°C to 30°C	36 m	500 mL	6
21-023-CM	[+] Calcium, magnesium; [-] phenol red, 1X	2°C to 30°C	36 m	1L	6

Powder

55-022-PB	[-] Sodium bicarbonate, calcium, magnesium	2°C to 8°C	36 m	10L	1
-----------	--	------------	------	-----	---

*Powder media volume indicated is the reconstituted volume.



CORNING® OTHER MEDIA AND SERA PRODUCTS

Specialty Media

Corning now provides an extensive lineup of powdered specialty media to complement our liquid media offering including specialized serum-free, serum-reduced, and virus maintenance media.

Powder

Cat. No.	Description	Storage	Shelf Life	Size*	Qty/Pk
90-010-PBT 90-010-PCT 90-010-PDT	HEK293 Serum-free Medium, [+] L-glutamine, Poloxamer 188, [-] phenol red, sodium bicarbonate	2°C to 8°C	24 m	10L 50L 100L	1
90-020-PBT 90-020-PCT 90-020-PDT	Vero Serum-free Medium, [+] L-glutamine, phenol red, [-] sodium bicarbonate	2°C to 8°C	24 m	10L 50L 100L	1
90-021-PBT 90-021-PCT 90-021-PDT	Vero Serum-reduced Medium, [+] L-glutamine, phenol red, [-] sodium bicarbonate	2°C to 8°C	24 m	10L 50L 100L	1
90-025-PBT 90-025-PCT 90-025-PDT	Vero Virus Maintenance Medium, Serum-free, [+] L-glutamine, phenol red, [-] sodium bicarbonate	2°C to 8°C	24 m	10L 50L 100L	1
90-026-PBT 90-026-PCT 90-026-PDT	Vero Serum-reduced Medium 2, [+] phenol red, sodium bicarbonate, [-] L-glutamine	2°C to 8°C	24 m	10L 50L 100L	1
90-030-PBT 90-030-PCT 90-030-PDT	MDCK Serum-free Medium, [+] L-glutamine, Poloxamer 188, phenol red, [-] sodium bicarbonate	2°C to 8°C	24 m	10L 50L 100L	1
90-032-PBT 90-032-PCT 90-032-PDT	MDCK Serum-reduced Medium, [+] L-glutamine, phenol red, [-] sodium bicarbonate	2°C to 8°C	24 m	10L 50L 100L	1
90-031-PBT 90-031-PCT 90-031-PDT	MDCK Virus Maintenance Medium 1, [+] L-glutamine, Poloxamer 188, phenol red, [-] sodium bicarbonate	2°C to 8°C	24 m	10L 50L 100L	1
90-033-PBT 90-033-PCT 90-033-PDT	MDCK Virus Maintenance Medium 2, [+] L-glutamine, phenol red, [-] sodium bicarbonate	2°C to 8°C	24 m	10L 50L 100L	1
90-040-PBT 90-040-PCT 90-040-PDT	Human Diploid Cell Serum-reduced Medium, [+] L-glutamine, phenol red, [-] sodium bicarbonate	2°C to 8°C	24 m	10L 50L 100L	1
90-041-PBT 90-041-PCT 90-041-PDT	Human Diploid Cell Virus Maintenance Medium, [+] L-glutamine, phenol red, [-] sodium bicarbonate	2°C to 8°C	24 m	10L 50L 100L	1
90-051-PBT 90-051-PCT 90-051-PDT	Marc-145 Serum-reduced Medium, [+] L-glutamine, phenol red, [-] sodium bicarbonate	2°C to 8°C	24 m	10L 50L 100L	1
90-060-PBT 90-060-PCT 90-060-PDT	PK-15 Serum-reduced Medium, [+] L-glutamine, Poloxamer 188, phenol red, [-] sodium bicarbonate	2°C to 8°C	24 m	10L 50L 100L	1
90-070-PBT 90-070-PCT 90-070-PDT	ST Serum-reduced Medium, [+] L-glutamine, Poloxamer 188, phenol red, [-] sodium bicarbonate	2°C to 8°C	24 m	10L 50L 100L	1
90-071-PBT 90-071-PCT 90-071-PDT	ST Virus Maintenance Medium, [+] L-glutamine, phenol red, [-] sodium bicarbonate	2°C to 8°C	24 m	10L 50L 100L	1
90-080-PBT 90-080-PCT 90-080-PDT	MDBK Serum-reduced Medium, [+] L-glutamine, [-] phenol red, sodium bicarbonate	2°C to 8°C	24 m	10L 50L 100L	1

*Powder media volume indicated is the reconstituted volume.

CORNING® OTHER MEDIA AND SERA PRODUCTS

Specialty Media (continued)

Powder

Cat. No.	Description	Storage	Shelf Life	Size*	Qty/Pk
90-093-PBT	Insect Cell Feed Medium 2,	2°C to 8°C	24 m	10L	1
90-093-PCT	[+] L-glutamine, Poloxamer 188,			50L	
90-093-PDT	[-] sodium bicarbonate			100L	
90-095-PBT	Insect Cell Serum-free Medium,	2°C to 8°C	24 m	10L	1
90-095-PCT	[+] L-glutamine, Poloxamer 188,			50L	
90-095-PDT	[-] sodium bicarbonate			100L	
90-102-PBT	BHK Serum-reduced Medium 1,	2°C to 8°C	24 m	10L	1
90-102-PCT	[+] L-glutamine, Poloxamer 188,			50L	
90-102-PDT	[-] phenol red, sodium bicarbonate			100L	
90-104-PBT	BHK Serum-reduced Medium 2,	2°C to 8°C	24 m	10L	1
90-104-PCT	[+] L-glutamine, Poloxamer 188,			50L	
90-104-PDT	[-] phenol red, sodium bicarbonate			100L	
90-103-PBT	BHK Virus Maintenance Medium 1,	2°C to 8°C	24 m	10L	1
90-103-PCT	[+] L-glutamine			50L	
90-103-PDT	[-] phenol red, sodium bicarbonate			100L	
90-105-PBT	BHK Virus Maintenance Medium 2,	2°C to 8°C	24 m	10L	1
90-105-PCT	[+] L-glutamine,			50L	
90-105-PDT	[-] phenol red, sodium bicarbonate			100L	
90-106-PBT	BHK Virus Maintenance Medium 3,	2°C to 8°C	24 m	10L	1
90-106-PCT	[+] L-glutamine, phenol red,			50L	
90-106-PDT	[-] sodium bicarbonate			100L	

*Powder media volume indicated is the reconstituted volume.

CORNING® OTHER MEDIA AND SERA PRODUCTS



Water

Cell Culture Grade Water

- ▶ High quality water suitable for use as a solvent in the preparation of cell culture media and other reagents for sensitive applications
- ▶ Our bioprocess container selections are suitable for large-scale applications such as cleaning and upstream and downstream reagent preparation
- ▶ Goes through a wide array of testing which includes testing to the chemical and physical properties found in the USP and EP monographs for sterile Water for Injection (WFI)

Tested to USP sterile WFI specifications

Cat. No.	Description	Storage	Shelf Life	Size	Qty/Pk
25-055-CI	Water, cell culture grade	2°C to 30°C	36 m	100 mL	6
25-055-CV	Water, cell culture grade	2°C to 30°C	36 m	500 mL	6
25-055-CVC	Water, cell culture grade, with septum cap	2°C to 30°C	36 m	500 mL	6
25-055-CM	Water, cell culture grade	2°C to 30°C	36 m	1L	6
25-055-LB	Water, cell culture grade	2°C to 30°C	36 m	20L	1
25-055-LG	Water, cell culture grade	2°C to 30°C	36 m	100L	1
25-055-LH	Water, cell culture grade	2°C to 30°C	36 m	200L	1

Tested to USP and EP sterile WFI specifications

25-065-LB	Water, cell culture grade	15°C to 30°C	36 m	20L	1
25-065-LG	Water, cell culture grade	15°C to 30°C	36 m	100L	1
25-065-LH	Water, cell culture grade	15°C to 30°C	36 m	200L	1



Molecular Biology Grade Water

- ▶ Ideal for applications where highly pure, RNase-, DNase-, and protease-free water is required (e.g., PCR and other molecular biology reactions setup, DNA/RNA/protein extraction, purification, and storage reagents)
- ▶ Tested to the chemical and physical properties found in the USP monograph for sterile purified water

Cat. No.	Description	Storage	Shelf Life	Size	Qty/Pk
46-000-CI	Water, molecular biology grade	2°C to 30°C	24 m	100 mL	6
46-000-CV	Water, molecular biology grade	2°C to 30°C	24 m	500 mL	6
46-000-CM	Water, molecular biology grade	2°C to 30°C	24 m	1L	6

Reagent Grade Water

- ▶ Suitable for the preparation of reagents, rinsing glassware and plasticware, cleaning electrodes and other common laboratory tasks requiring highly pure, RNase-, DNase-, and protease-free water
- ▶ Tested to the chemical and physical properties found in the USP monograph for purified water

Cat. No.	Description	Storage	Shelf Life	Size	Qty/Pk
46-002-LF	Water, reagent grade	15°C to 30°C	*	4L	2

*Please inquire for lot-specific expiration dates or view the current certificate of analysis at www.corning.com/resources.

CORNING® OTHER MEDIA AND SERA PRODUCTS



Antibiotics and Antimycotics

Antibiotics and Antimycotics aid in preventing culture contamination.

Amphotericin B

Liquid ♦

Cat. No.	Description	Storage	Shelf Life	Size	Qty/Pk
30-003-CF	Amphotericin B, liquid	-25°C to -15°C	18 m	50 mL	6

Ampicillin Sodium Salt

Powder ▲

Cat. No.	Description	Storage	Shelf Life	Size*	Qty/Pk
61-238-RH	Ampicillin sodium salt	2°C to 8°C	≥12 m	10 g	1
61-238-RM	Ampicillin sodium salt	2°C to 8°C	≥12 m	100 g	1

*Powder media volume indicated is the reconstituted volume.

Antibiotic-Antimycotic Solution

Liquid ♦

Cat. No.	Description	Storage	Shelf Life	Size	Qty/Pk
30-004-CI	10,000 I.U. Penicillin (per mL), 10,000 µg/mL Streptomycin, 25 µg/mL Amphotericin with 8.5 g/L NaCl	-25°C to -15°C	18 m	100 mL	6

Blasticidin S HCl

Powder ▲

Cat. No.	Description	Storage	Shelf Life	Size*	Qty/Pk
30-100-RB	Blasticidin S HCl	-25°C to -15°C	18 m	50 mg	1

*Powder media volume indicated is the reconstituted volume.

Chloramphenicol

Powder ▲

Cat. No.	Description	Storage	Shelf Life	Size*	Qty/Pk
61-239-RI	Chloramphenicol	25°C to 30°C	≥12 m	25 g	1

*Powder media volume indicated is the reconstituted volume.

Ciprofloxacin Hydrochloride

Powder ▲

Cat. No.	Description	Storage	Shelf Life	Size*	Qty/Pk
61-277-RF	Ciprofloxacin hydrochloride	25°C to 30°C	≥12 m	1 g	1
61-277-RG	Ciprofloxacin hydrochloride	25°C to 30°C	≥12 m	5 g	1

*Powder media volume indicated is the reconstituted volume.

G418 Sulfate

Liquid ♦

Cat. No.	Description	Storage	Shelf Life	Size*	Qty/Pk
30-234-CR	G418 Sulfate, 50 mg/mL solution	2°C to 8°C	≥12 m	20 mL	1
30-234-CI	G418 Sulfate, 50 mg/mL solution	2°C to 8°C	≥12 m	100 mL	1

Powder ▲

Cat. No.	Description	Storage	Shelf Life	Size*	Qty/Pk
61-234-RF	G418 Sulfate, potency >700 µg/mg	15°C to 30°C	≥12 m	1 g	1
61-234-RG	G418 Sulfate, potency >700 µg/mg	15°C to 30°C	≥12 m	5 g	1
61-234-RK	G418 Sulfate, potency >700 µg/mg	15°C to 30°C	≥12 m	50 kg	1

*Powder media volume indicated is the reconstituted volume.



CORNING® OTHER MEDIA AND SERA PRODUCTS

Antibiotics and Antimycotics (continued)

Gentamicin Sulfate

Liquid

Cat. No.	Description	Storage	Shelf Life	Size*	Qty/Pk
30-005-CR	Gentamicin sulfate	15°C to 30°C	12 m	10 mL	10

Powder

61-098-RA	Gentamicin sulfate	2°C to 8°C	≥12 m	100 mg	1
61-098-RF	Gentamicin sulfate	2°C to 8°C	≥12 m	1 g	1

*Powder media volume indicated is the reconstituted volume.

Hygromycin B Solution

Liquid

Cat. No.	Description	Storage	Shelf Life	Size	Qty/Pk
30-240-CR	Hygromycin B solution	2°C to 8°C	18 m	10 mL	1

Kanamycin Sulfate

Liquid

Cat. No.	Description	Storage	Shelf Life	Size*	Qty/Pk
30-006-CF	Kanamycin sulfate	-25°C to -15°C	18 m	50 mL	6

Powder

61-176-RG	Kanamycin sulfate	15°C to 30°C	18 m	5 g	1
-----------	-------------------	--------------	------	-----	---

*Powder media volume indicated is the reconstituted volume.

Neomycin Sulfate

Powder

Cat. No.	Description	Storage	Shelf Life	Size*	Qty/Pk
61-241-RG	Neomycin sulfate	15°C to 30°C	18 m	5 g	1

*Powder media volume indicated is the reconstituted volume.

Penicillin-Streptomycin Solution

Liquid

Cat. No.	Description	Storage	Shelf Life	Size	Qty/Pk
30-001-CI	Penicillin-Streptomycin solution, 50x	-25°C to -15°C	12 m	100 mL	6
30-002-CI	Penicillin-Streptomycin solution, 100X	-25°C to -15°C	12 m	100 mL	6
30-009-CI	Penicillin-Streptomycin solution, 100X [+] 29.2 mg/mL L-glutamine	-25°C to -15°C	12 m	100 mL	6

Puromycin Dihydrochloride

Powder

Cat. No.	Description	Storage	Shelf Life	Size*	Qty/Pk
61-385-RA	Puromycin dihydrochloride	-25°C to -15°C	12 m	0.1 g	1

*Powder media volume indicated is the reconstituted volume.

Streptomycin Sulfate

Powder

Cat. No.	Description	Storage	Shelf Life	Size*	Qty/Pk
61-088-RM	Streptomycin sulfate	2°C to 8°C	12 m	100 g	1

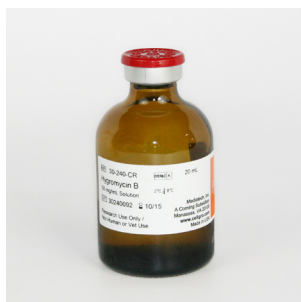
*Powder media volume indicated is the reconstituted volume.

Tetracycline Hydrochloride

Powder

Cat. No.	Description	Storage	Shelf Life	Size*	Qty/Pk
61-242-RG	Tetracycline hydrochloride	2°C to 8°C	12 m	5 g	1

*Powder media volume indicated is the reconstituted volume.



CORNING® OTHER MEDIA AND SERA PRODUCTS



FBS (Fetal Bovine Serum)

Fetal Bovine Serum is a time tested, universal supplement used in cell culture. It provides many compounds that have been shown to satisfy specific metabolic requirements for the culture of cells, including hormones, growth factors, cell attachment factors, protease inhibitors, vitamins, minerals, lipids, and a variety of undefined components.

- ▶ Corning offers FBS from different origins and of various treatments to meet your research and manufacturing needs
- ▶ Corning also offers bovine calf, donor horse, sheep, and rabbit serum

Cat. No.	Description	Storage	Shelf Life	Size	Qty/Pk
35-010-CV	FBS, Regular, USDA Safety Tested	-40°C to -10°C	*	500 mL	1
35-011-CV	FBS, Regular, USDA Safety Tested (heat inactivated)	-40°C to -10°C	*	500 mL	1
35-077-CV	FBS, Regular, Canadian Origin	-40°C to -10°C	*	500 mL	1
35-087-CV	FBS, Regular, Canadian Origin (heat inactivated)	-40°C to -10°C	*	500 mL	1
35-079-CV**	FBS, Regular, South American Origin	-40°C to -10°C	*	500 mL	1
35-089-CV**	FBS, Regular, South American Origin (heat inactivated)	-40°C to -10°C	*	500 mL	1
35-015-CV	FBS, Premium, US Origin	-40°C to -10°C	*	500 mL	1
35-016-CV	FBS, Premium, US Origin (heat inactivated)	-40°C to -10°C	*	500 mL	1
35-070-CV	FBS, Premium, US Origin (gamma irradiated)	-40°C to -10°C	*	500 mL	1
35-017-CV***	FBS, Premium, US Origin (heat inactivated and gamma irradiated)	-40°C to -10°C	*	500 mL	1
35-071-CV	FBS, Premium, US Origin (dialyzed)	-40°C to -10°C	*	500 mL	1
35-072-CV	FBS, Premium, US Origin, (charcoal stripped)	-40°C to -10°C	*	500 mL	1
35-073-CV	FBS, Premium, US Origin (ultra low IgG)	-40°C to -10°C	*	500 mL	1
35-075-CV	FBS, Premium, US Origin, (tetracycline negative)	-40°C to -10°C	*	500 mL	1
35-076-CV	FBS, Premium, Australia Origin	-40°C to -10°C	*	500 mL	1
35-086-CV	FBS, Premium, Australia Origin (heat inactivated)	-40°C to -10°C	*	500 mL	1
35-096-CV	FBS, Premium, Australia Origin (gamma irradiated)	-40°C to -10°C	*	500 mL	1
35-106-CV***	FBS, Premium, Australia Origin (heat inactivated and gamma irradiated)	-40°C to -10°C	*	500 mL	1
35-078-CV	FBS, Premium, New Zealand Origin	-40°C to -10°C	*	500 mL	1
35-088-CV	FBS, Premium, New Zealand Origin (heat inactivated)	-40°C to -10°C	*	500 mL	1
35-098-CV	FBS, Premium, New Zealand Origin (gamma irradiated)	-40°C to -10°C	*	500 mL	1
35-108-CV***	FBS, Premium, New Zealand Origin (heat inactivated and gamma irradiated)	-40°C to -10°C	*	500 mL	1

*Please inquire for lot-specific expiration dates or view the current certificate of analysis at www.corning.com/resources.

**Not available for export to the US.

***Made to order. Please contact your local Corning Account Manager for more details.

Cell Growth Supplements

Growth media requires specific nutrients and supplements, among other reagents, to maximize results and consistency. We offer a variety of products including:

- ▶ L-glutamine and its alternate Corning® glutagro™ supplement
- ▶ Amino acids
- ▶ Insulin transferrin selenium
- ▶ Various animal origin and non-animal origin growth factors and supplements

We are committed to providing researchers with the highest quality supplements to drive their research. As with all Corning media products, cGMP practices and ISO standards are inherent to the quality of supplements.

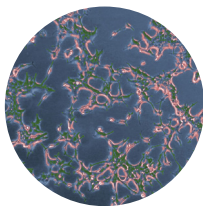
For a complete listing of Corning media products, visit www.corning.com/lifesciences.



CELL CULTURE SURFACES

Increase Cell Growth and Yields with Corning® CellBIND® Surface

The Corning CellBIND surface enhances cell attachment under difficult conditions, such as reduced-serum or serum-free medium, resulting in higher cell yields. Developed by Corning scientists, this technology uses a microwave plasma process for treating the culture surface. This process improves cell attachment by incorporating significantly more oxygen into the cell culture surface, rendering it more hydrophilic (wetter) and increasing surface stability.



Benefits

- ▶ More quickly adapts cells to reduced-serum or serum-free conditions
- ▶ Increases cell survival following cryopreservation
- ▶ Reduces premature cell detachment from confluent cultures, especially in roller bottles
- ▶ More consistent and even cell attachment
- ▶ Better cell attachment leads to increased cell growth and yields
- ▶ Requires no refrigeration or special handling and is stable at room temperature
- ▶ Available formats: roller bottles, cell culture flasks, dishes, multiwell plates, Corning HYPERFlask® and CellSTACK® culture vessels.

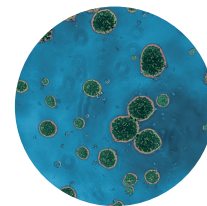
Corning Synthemax® Self-coating Substrate

Corning Synthemax self-coating substrate is a unique, animal-free, synthetic Vitronectin-based peptide containing the RGD motif and flanking sequences. The Synthemax substrate allows for scalable, multi-passage expansion of pluripotent stem cells in serum-free media, such as mTeSR®, subsequent to differentiation into a number of cell types, including retinal pigment epithelial cells and cardiomyocytes, as well as propagation of various progenitor cell types.

For other Corning advanced and enhanced tissue culture surfaces, Corning BioCoat® and Corning PureCoat™ ECM Mimetic cultureware, see CLS-DL-AC-012.

Corning Ultra-Low Attachment Surface to Minimize Cell Adhesion

The Ultra-Low Attachment (ULA) surface is a unique, covalently bonded hydrogel surface that is hydrophilic and neutrally charged. It minimizes cell attachment, protein absorption and enzyme activation. The surface is noncytotoxic, biologically inert, and nondegradable.

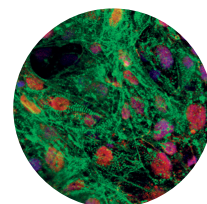


Benefits

- ▶ Maintains cells in a suspended, unattached state
- ▶ Prevents stem cells from attachment-mediated differentiation
- ▶ Assists in the formation of stem cell embryoid bodies
- ▶ Prevents anchorage-dependent cells from dividing
- ▶ Reduces binding of attachment and serum proteins to the substrate
- ▶ Available formats: dishes, multiwell plates, spheroid plates, flasks, and Corning CellSTACK® culture chambers as well as 96- and 384-well microplates for high throughput spheroid screening applications.

Corning Tissue Culture-treated Products for Everyday Attachment Cell Culture Needs

Corning Tissue Culture (TC)-treated products are surface modified by corona discharge or gas plasma treatment which leaves the surface hydrophilic and negatively charged with the addition of media.

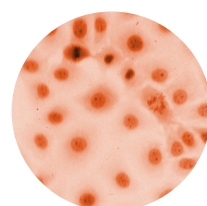


Benefits

- ▶ High quality and optically clear polystyrene
- ▶ Sterile
- ▶ Nonpyrogenic
- ▶ Printed with lot numbers for ease in traceability
- ▶ Available formats: flasks, dishes, plates, roller bottles, and scale-up vessels

Corning Non-treated Cell Culture Products for Reduced Attachment Needs

Corning non-treated products have a hydrophobic surface and are available in different formats. This surface is ideal for non-adherent cell culture or for the easier removal of strongly adherent cells.



Benefits

- ▶ High quality and optically clear polystyrene like our current Tissue Culture-treated products
- ▶ Sterile
- ▶ Nonpyrogenic
- ▶ Printed with lot numbers for ease in traceability
- ▶ Available formats: flasks, dishes, and multiwell plates

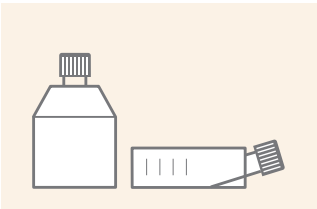
CELL CULTURE FLASKS

Cell Culture Flasks

Corning® flasks are available in a variety of sizes, designs and cap styles to meet your needs.

- ▶ Corning CellBIND® surface is a novel cell culture treatment that increases surface wettability for more even and consistent cell attachment.
- ▶ ULA surface flasks feature a covalently bound hydrogel layer that minimizes cell attachment, protein absorption and cellular activation.

Choosing a flask shape is usually a matter of personal preference:



Rectangular flasks have a ramp from the bottom to the canted neck for easier pouring and pipet access. Most canted neck flasks also have an anti-tip skirt to enhance stability.



Angled neck and traditional straight neck flasks utilize the entire bottom area for cell growth. Their design saves on space and reduces medium sloshing into the neck.



U-shaped flasks have rounded shoulders for an easier grip and better access when removing or tightening the cap. The ergonomic shape also reduces the number of corners, improves cell scraping, and allows the use of a larger pipet.



25 cm² flask, canted neck, vent cap



75 cm² U-shaped flask, canted neck, vent cap



75 cm² U-shaped flask, canted neck, phenolic style cap



150 cm² U-shaped flask, canted neck, plug seal cap

25 cm² Growth Area Flasks

Cat. No.	Surface	Flask Style	Neck Style	Cap Style	Qty	Qty/Cs
430168	TC-treated	Rectangular	Canted	Plug seal	20	500
430372	TC-treated	Rectangular	Canted	Phenolic-style	20	500
430639	TC-treated	Rectangular	Canted	Vent	20	200
3289	Corning CellBIND	Rectangular	Canted	Vent	20	200
4616	Ultra-Low Attachment	Rectangular	Canted	Vent	5	25
431463	Not Treated	Rectangular	Canted	Vent	20	200

75 cm² Growth Area Flasks

430641U	TC-treated	U-shaped	Canted	Vent	5	100
430720U	TC-treated	U-shaped	Canted	Plug seal	5	100
430725U	TC-treated	U-shaped	Canted	Phenolic-style	5	100
431464U	Not treated	U-shaped	Canted	Vent	5	100
3290	Corning CellBIND	U-shaped	Canted	Vent	5	100
3814	Ultra-Low Attachment	U-shaped	Canted	Vent	4	24

150 cm² Growth Area Flasks

430823	TC-treated	U-shaped	Canted	Plug seal	5	50
430824	TC-treated	U-shaped	Canted	Phenolic style	5	50
430825	TC-treated	U-shaped	Canted	Vent	5	50
3291	Corning CellBIND	U-shaped	Canted	Vent	5	50
431465	Not treated	U-shaped	Canted	Vent	5	50

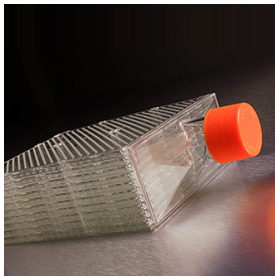
CELL CULTURE FLASKS



175 cm² U-shaped flask,
angled neck, vent cap



225 cm² angled neck flask
with vent cap



1720 cm² Corning HYPERFlask
vessel

175 cm² Growth Area Flasks

Cat. No.	Surface	Flask Style	Neck Style	Cap Style	Qty	Qty/Cs
431079	TC-treated	U-shaped	Angled	Plug seal	5	50
431080	TC-treated	U-shaped	Angled	Vent	5	50
431085	TC-treated	U-shaped	Angled	Phenolic style	5	50
431306*	TC-treated	Rectangular	Angled	Vent	7	84
431328*	Corning CellBIND	Rectangular	Angled	Vent	7	84
3292	Corning CellBIND	U-shaped	Angled	Vent	5	50
431466	Not treated	U-shaped	Angled	Vent	5	50

225 cm² Growth Area Flasks

431081	TC-treated	Traditional	Angled	Plug seal	5	25
431082	TC-treated	Traditional	Angled	Vent	5	25
3293	Corning CellBIND	Traditional	Angled	Vent	5	25

1720 cm² Growth Area Corning HYPERFlask® Vessel

Cat. No.	Description	Surface	Type	Qty/Pk	Qty/Cs
10024*	HYPERFlask vessel	Corning CellBIND	Bar code, sterile	4	24
10030	HYPERFlask M vessel	Corning CellBIND	Bar code, sterile	1	4
10020	HYPERFlask M vessel	Corning CellBIND	Bar code, sterile	4	4
10034	HYPERFlask M vessel	Corning CellBIND	Bar code, sterile	4	24
10031	HYPERFlask M vessel	Not Treated	Bar code, sterile	1	4
10035	33 mm caps	N/A	Not vented, sterile	1	4

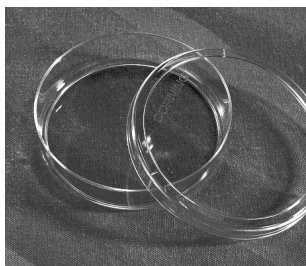
*Flask prelabeled with bar code for use with SelecT™ Robotic System.

Cell Culture Flask Selection Tip

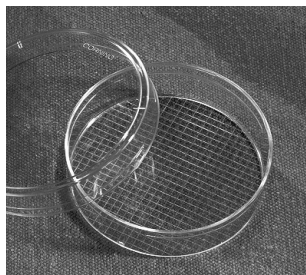
The novel Corning HYPERFlask vessel offers high yield and high performance with 10 growth surfaces and 1720 cm² growth area in the same footprint as the 175 cm² flask.

For other Corning enhanced tissue culture surfaces, Corning BioCoat® and Corning PureCoat™ ECM Mimetic flasks, see CLS-DL-AC-012.

CELL CULTURE DISHES



100 mm dishes coated with Corning CellBIND surface



Gridded 60 mm dish

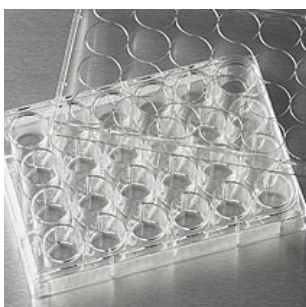
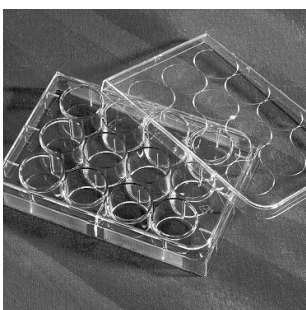
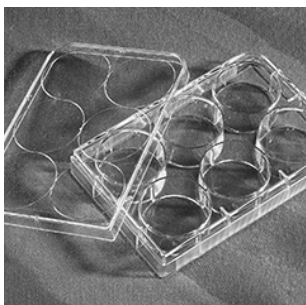
Treated Cell Culture Dishes

Cat. No.	Surface	Dish Style* (mm)	Approx. Height (mm)	Growth Area (cm ²)	Qty	Qty/Cs
3294	Corning CellBIND®	35	10	9	10	210
430165	TC-treated	35	10	9	20	500
430166	TC-treated	60	15	21	20	500
3295	Corning CellBIND	60	15	21	7	126
3261	Ultra-Low Attachment	60	15	21	5	20
430196	TC-treated	60 with 2 mm grid	15	21	20	500
4615	Ultra-Low Attachment	100	20	55	5	40
430167	TC-treated	100	20	55	20	500
430293	TC-treated	100	20	55	10	480
430599	TC-treated	150	25	150	5	60
431110 [†]	TC-treated	245	25	500	4	16

*Dish style (mm) = actual growth surface diameters: 35 mm dish = 34.4 mm; 60 mm dish = 52.1 mm; 100 mm dish = 83.8 mm; 150 mm dish = 139.1 mm. The square dishes have interior bottom dimensions of 224 mm x 224 mm.

[†]Square dishes with interior bottom dimensions of 224 x 224 mm.

MULTIWELL PLATES



Corning® Costar® 6-, 12-, 24-, and 48-well Cell Culture Plates

6-well

Cat. No.	Surface	Plate Type	Qty	Qty/Cs
3335	Corning CellBIND	Standard clear	5	50
3506	TC-treated	Standard clear	5	100
3516	TC-treated	Standard clear	1	50
3471	Ultra-Low Attachment	Standard clear with hydrogel*	1	24
3736	Not treated	Standard clear	5	100

12-well

3336	Corning CellBIND	Standard clear	5	50
3512	TC-treated	Standard clear	5	100
3513	TC-treated	Standard clear	1	50
3737	Not treated	Standard clear	5	100

24-well

3337	Corning CellBIND	Standard clear	5	50
3524	TC-treated	Standard clear	1	100
3526	TC-treated	Standard clear	1	50
3527	TC-treated	Standard clear	5	100
3473	Ultra-Low Attachment	Standard with hydrogel*	1	24
3738	Not treated	Standard clear	5	100

48-well

3338	Corning CellBIND	Standard clear	5	50
3548	TC-treated	Standard clear	1	100

*This covalently bonded hydrogel surface minimizes cell attachment, protein absorption, enzyme activation and cellular activation. The surface is noncytotoxic, biologically inert and nondegradable.

For other Corning enhanced tissue culture surfaces, Corning PureCoat™ ECM Mimetic dishes and plates, see CLS-DL-AC-012.

CELL CULTURE FILTRATION



Corning® Vacuum Filter Systems

- ▶ Angled hose connector provides added stability while filtering
- ▶ Clearly labeled filter funnels for easy product identification
- ▶ Four sizes: 150 mL, 250 mL, 500 mL and 1L
- ▶ Receiver bottles feature easy grip sides for improved handling

150 mL Capacity, 42 mm Square Membrane

Cat. No.	Membrane	Funnel/Bottle Volume (mL)	Pore Size (µm)	Qty/Cs
431153	PES	150/150	0.22	12
431154	CA	150/150	0.22	12
431155	CA	150/150	0.45	12

250 mL Capacity, 49.5 mm Square Membrane

430756	CN	250/250	0.22	12
430767	CA	250/250	0.22	12
430768	CA	250/250	0.45	12
430771	NY	250/250	0.2	12
431096	PES	250/250	0.22	12

500 mL Capacity, 63 mm Square Membrane

430758	CN	500/500	0.22	12
430769	CA	500/500	0.22	12
430770	CA	500/500	0.45	12
430773	NY	500/500	0.2	12
431097	PES	500/500	0.22	12
431475	PES	500/500	0.1	12

1,000 mL Capacity, 79 mm Square Membrane

430186	CN	1,000/1,000	0.22	12
430515	NY	1,000/1,000	0.2	12
430516	CA	1,000/1,000	0.45	12
430517	CA	1,000/1,000	0.22	12
431098	PES	1,000/1,000	0.22	12
431205*	CA	500/1,000	0.22	12
431206*	CA	500/1,000	0.45	12
431474	PES	1,000/1,000	0.1	12

*500 mL funnel with 63 mm membrane.

PES = polyethersulfone, CA = cellulose acetate, NY = nylon.

CELL CULTURE FILTRATION



Bottle Top Vacuum Filters

- Individually packaged
- Sterile
- Nonpyrogenic
- Available in 33 mm and 45 mm necks to fit most glass and plastic media storage bottles.

150 mL Capacity, 42 mm Square Membrane

Cat. No.	Membrane	Volume (mL)	Pore Size (μm)	Pore Size (μm)	Qty/Cs
430624	CA	150	33	0.22	48
430625	CA	150	33	0.45	48
430626	CA	150	45	0.22	48
430627	CA	150	45	0.45	48
431160	PES	150	33	0.22	48
431161	PES	150	45	0.22	48

500 mL Capacity, 63 mm Square Membrane

Cat. No.	Membrane	Volume (mL)	Pore Size (μm)	Pore Size (μm)	Qty/Cs
430049	NY	500	45	0.2	12
430512	CA	500	33	0.45	12
430513	CA	500	45	0.22	12
430514	CA	500	45	0.45	12
430521	CA	500	33	0.22	12
431117	PES	500	33	0.22	12
431118	PES	500	45	0.22	12

1,000 mL Capacity, 79 mm Square Membrane

Cat. No.	Membrane	Volume (mL)	Pore Size (μm)	Pore Size (μm)	Qty/Cs
430015	CA	1,000	45	0.22	12
431174	PES	1,000	45	0.22	12

PES = polyethersulfone, CA = cellulose acetate, CN = cellulose nitrate, NY = nylon.

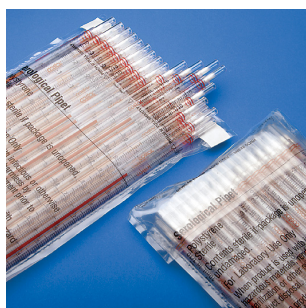
LIQUID HANDLING



Paper/plastic wrap



Clear plastic wrap



Bulk pack

Stripette® Serological Pipets

- ▶ Manufactured and packaged with animal-free materials
- ▶ Sterility Assurance Level (SAL) of 10^{-6}
- ▶ RNase-/DNase-free
- ▶ Human DNA-free
- ▶ Nonpyrogenic
- ▶ Noncytotoxic
- ▶ Exclusive anti-drip tip assures accurate delivery
- ▶ Color-coded magnifier stripes make volume reading and size selection easier
- ▶ Bidirectional graduations provide choice of ascending and descending scales
- ▶ Negative graduations allow additional working volume
- ▶ Three packaging options:
 - Individually wrapped, paper/plastic
 - Individually wrapped, clear plastic
 - Bulk packed
- ▶ Volumetric accuracy of $\pm 2\%$ at stated capacity
- ▶ Extractables data available upon request

Individually Wrapped, Paper/Plastic Wrap

Cat. No.	Capacity (mL)	Graduations (mL)	Negative Grads. (mL)	Color-coded Stripe	Qty/Pk	Qty/Cs
4485	1	1/100	0.2	Yellow	50	1,000
4486	2	1/100	0.2	Green	50	1,000
4487	5	1/10	2.5	Blue	50	200
4488	10	1/10	3.0	Orange	50	200
4489	25	2/10	10.0	Red	25	200
4490	50	1/2	10.0	Purple	25	100
4491	100	1	n/a	Aqua	10	100

Individually Wrapped, Clear Plastic Wrap

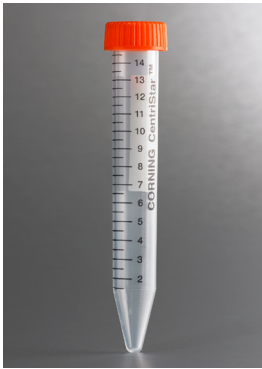
4011	1	1/100	0.2	Yellow	50	1,000
4012	1	1/100	0.2	Yellow	50	200
4021	2	1/100	0.2	Green	50	1,000
4051	5	1/10	2.5	Blue	50	200
4101	10	1/10	3.0	Orange	50	200
4492*	10	1/10	3.0	Orange	50	200
4251	25	2/10	10.0	Red	50	200
4501	50	1/2	10.0	Purple	25	100
4484	100	1	n/a	Aqua	10	100

Bulk Packed in Bags

4485	1	1/100	0.2	Yellow	50	1,000
4486	2	1/100	0.2	Green	50	1,000
4487	5	1/10	2.5	Blue	50	200
4488	10	1/10	3.0	Orange	50	200
4489	25	2/10	10.0	Red	25	200
4490	50	1/2	10.0	Purple	25	100

*Cat. No. 4492 features a wide tip for handling viscous fluids.

LIQUID HANDLING



Corning® CentriStar™ and Plug Seal Centrifuge Tubes

- Leakproof cap design ensures at tight seal
- Easy-on/easy-off cap improves ergonomic cap handling
- Clear graduations provide accuracy and consistency
- Tubes with plug seal caps are 95 kPa pressure tested, USP Class VI resin, RNase-/DNase-free
- Large white marking spot enables easy labeling
- Improved maximum RCF rating for high-speed applications
 - 15 mL polypropylene centrifuge tubes are rated at 12,500 x g
 - 50 mL polypropylene centrifuge tubes are rated at 17,000 x g
- Increased temperature range of -80°C to 120°C
- Heavy-metal-free color concentrate
- High quality virgin polypropylene
- Sterile
- Nonpyrogenic

15 mL Centrifuge Tubes

Cat. No.	Material	Cap Style	Max. RCF	Qty/Pk	Qty/Cs
430053	PET	Plug seal	3,600	50/sleeve	500
430055	PET	Plug seal	3,600	50/rack	500
430052	PP	Plug seal	12,000	50/rack	500
430766	PP	Plug seal	12,000	50/sleeve	500
430790	PP	CentriStar	12,500	50/rack	500
430791	PP	CentriStar	12,500	50/sleeve	500
431470	PP	No cap (tube only)	12,000	25/sleeve	500
431471	PP	CentriStar cap only (no tube)	12,000	100/sleeve	500
431355	Foam centrifuge tube rack, 15 mL		—	—	20

50 mL Centrifuge Tubes

Cat. No.	Material	Cap Style	Max. RCF	Feature	Qty/Pk	Qty/Cs
430897	PP	Plug seal	3,000	Self-standing bottom	25/sleeve	500
430921	PP	CentriStar	3,000	Self-standing bottom	25/sleeve	500
430304	PET	Plug seal	3,600	Conical bottom	25/rack	500
430290	PP	Plug seal	15,500	Conical bottom	25/rack	500
430291	PP	Plug seal	15,500	Conical bottom	25/sleeve	500
430828	PP	CentriStar	17,000	Conical bottom	25/rack	500
430829	PP	CentriStar	17,000	Conical bottom	25/sleeve	500
4558	PP	CentriStar	17,000	Conical bottom	25/rack	300

RCF = relative centrifugal force (x g). PET = polyethylene terephthalate, PP = polypropylene

Warranty/Disclaimer: Unless otherwise specified, all products are for research use or general laboratory use only.* Not intended for use in diagnostic or therapeutic procedures. Not for use in humans. These products are not intended to mitigate the presence of microorganisms on surfaces or in the environment, where such organisms can be deleterious to humans or the environment. Corning Life Sciences makes no claims regarding the performance of these products for clinical or diagnostic applications. *For a listing of US medical devices, regulatory classifications or specific information on claims, visit www.corning.com/resources.

Corning's products are not specifically designed and tested for diagnostic testing. Many Corning products, though not specific for diagnostic testing, can be used in the workflow and preparation of the test at the customers discretion. Customers may use these products to support their claims. We cannot make any claims or statements that our products are approved for diagnostic testing either directly or indirectly. The customer is responsible for any testing, validation, and/or regulatory submissions that may be required to support the safety and efficacy of their intended application.

CORNING

Corning Incorporated
Life Sciences
www.corning.com/lifesciences

NORTH AMERICA

t 800.492.1110
t 978.442.2200

ASIA/PACIFIC

Australia/New Zealand
t 61 427286832
Chinese Mainland
t 86 21 3338 4338

India

t 91 124 4604000

Japan

t 81 3-3586 1996

Korea

t 82 2-796-9500

Singapore

t 65 6572-9740

Taiwan

t 886 2-2716-0338

EUROPE

CSEurope@corning.com

France

t 0800 916 882

Germany

t 0800 101 1153

The Netherlands

t 020 655 79 28

United Kingdom

t 0800 376 8660

All Other European Countries

t +31 (0) 206 59 60 51

LATIN AMERICA

grupoLA@corning.com

Brazil

t 55 (11) 3089-7400

Mexico

t (52-81) 8158-8400