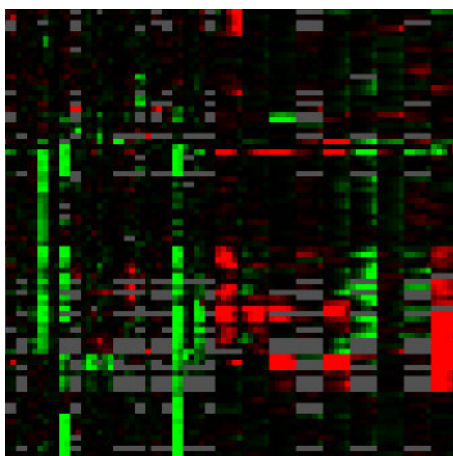
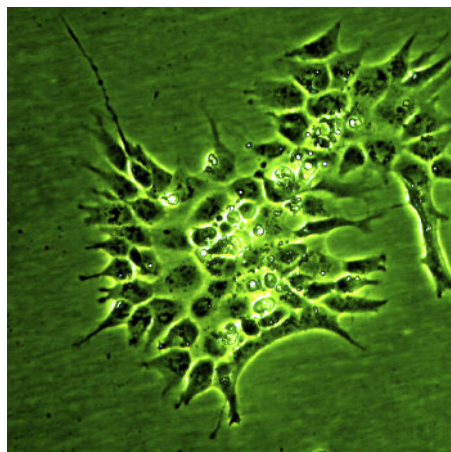
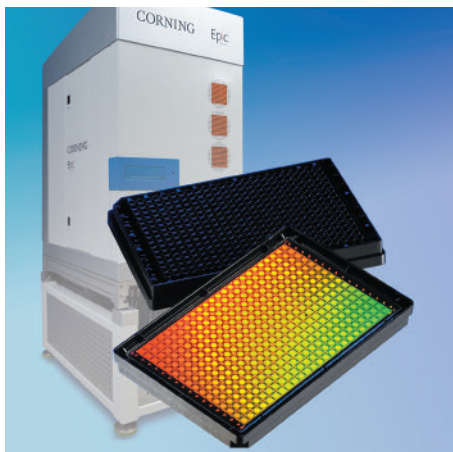


Corning® Epic® Pharmacology

Enabling Cellular Pathway Profiling in Drug Discovery



Enable Better Decisions

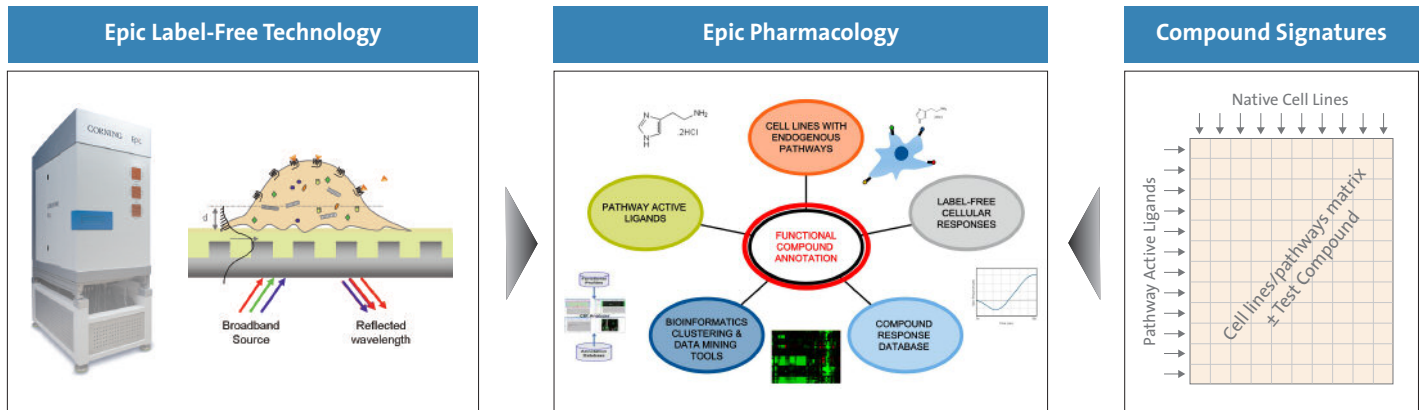
Sooner

CORNING

Epic
technology

Corning® Epic® Technology

We have established a unique cell profiling matrix of native signaling pathways using the power of Epic label-free detection technology which enables a better understanding of the cellular activities of lead compounds.



Corning Epic Pharmacology

Enhance decision making with biologically relevant cellular profiling

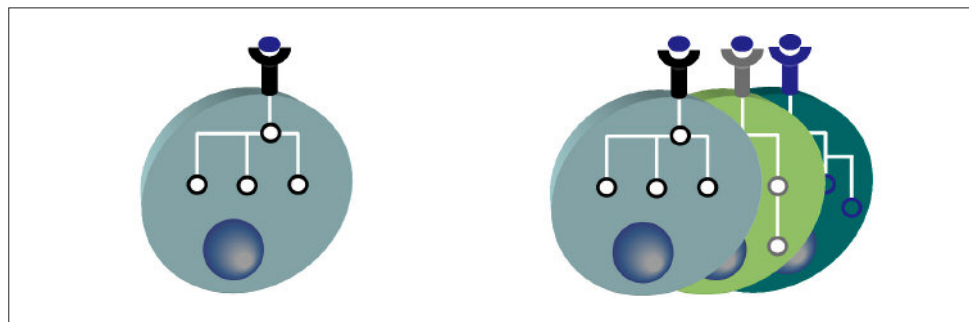
Lead Discrimination and Optimization

Adverse Effect Prediction

Drug Candidate Prioritization

Drug Repurposing

Partner With the Leader in Label-Free Technology to Leverage Our Systems and Pathway Biology Capabilities in Your Drug Discovery Process with Customized Profiling Solutions



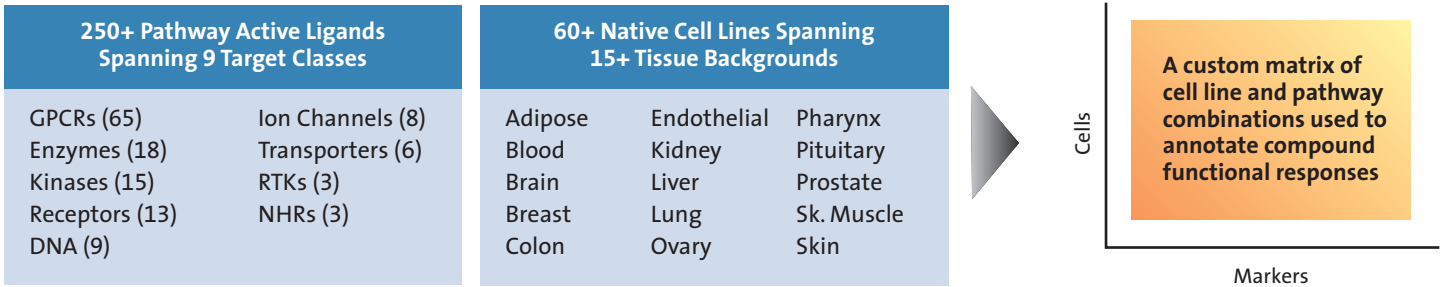
Profiling Matrix Type 1

- ▶ One customer-defined pathway or target
- ▶ Deep pathway deconvolution
- ▶ Find novel effects on cell signals

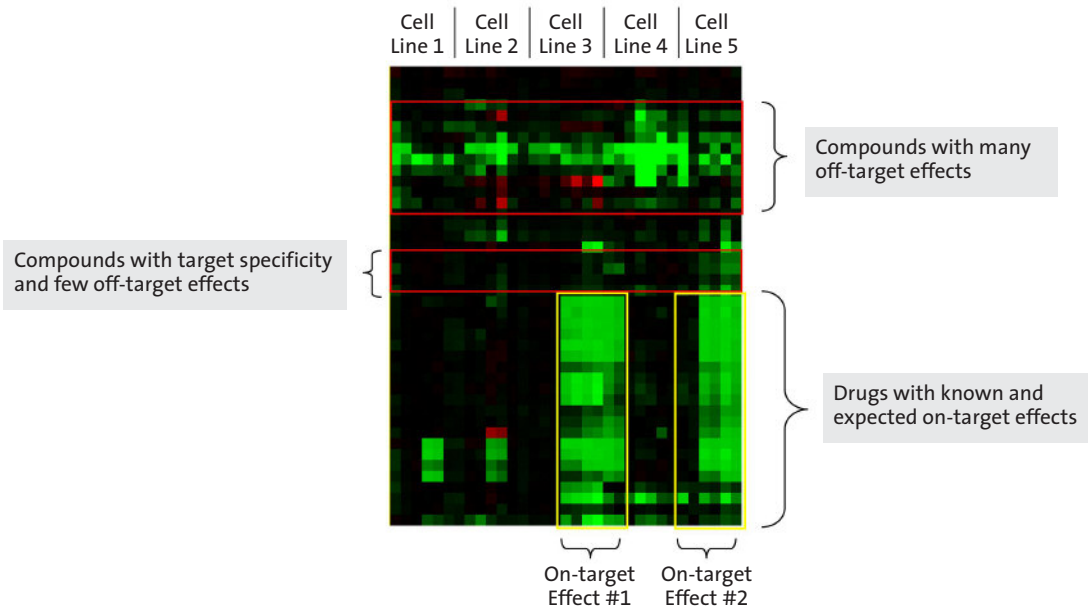
Profiling Matrix Type 2

- ▶ Multiple cell lines and pathways
- ▶ Broad compound phenotyping
- ▶ Identify polypharmacology and off-target activities

Corning Offers Broad Experience Across an Extensive Matrix of Pathways Assembled from a Range of Cell Lines and Pathway Active Ligands

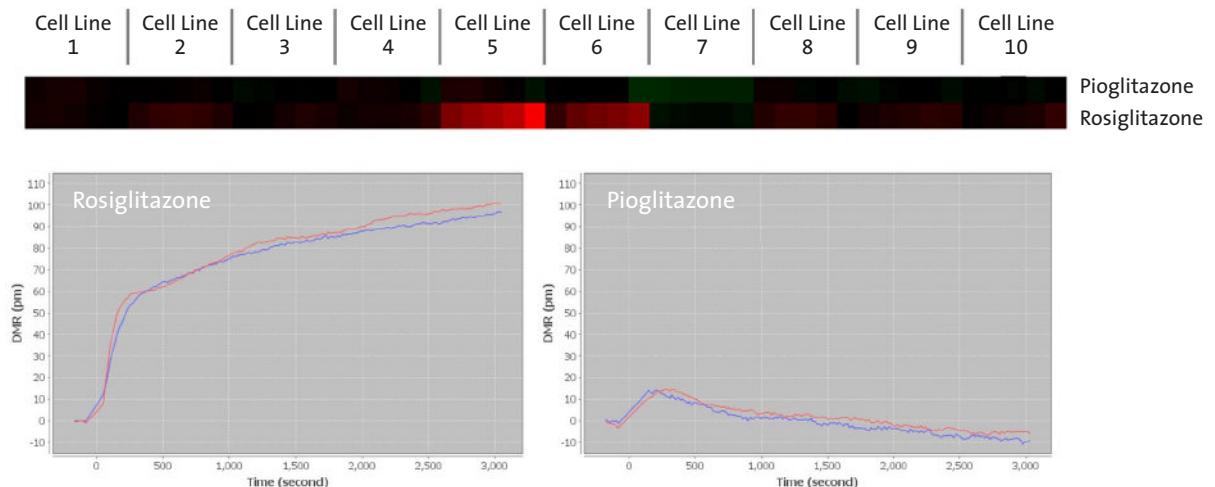


Example Type 2 Polypharmacology Matrix



Assessing Off-Target Profiles for Related Compounds

Cell Line #5 Contrasting Responses – Sensitive Discrimination of Functional Activities Between Closely Related Compounds





Corning® Epic® Pharmacology helps reveal hidden compound activities and novel interactions, unforeseen pathway interactions, and off-target effects, providing more biologically relevant data to enhance decision making in compound prioritization.

For more information, please contact:

Ravi Marala, Ph.D.
t: 607.974.4829 (O)
t: 607.346.7703 (M)
e: MaralaR@Corning.com

Corning Incorporated
Life Sciences

836 North St.
Building 300, Suite 3401
Tewksbury, MA 01876
t 800.492.1110
t 978.442.2200
f 978.442.2476

www.corning.com/lifesciences

Worldwide
Support Offices

ASIA/PACIFIC

Australia/New Zealand
t 0402-794-347

China
t 86 21 2215 2888
f 86 21 6215 2988

India
t 91 124 4604000
f 91 124 4604099

Japan

t 81 3-3586 1996
f 81 3-3586 1291

Korea

t 82 2-796-9500
f 82 2-796-9300

Singapore

t 65 6733-6511
f 65 6861-2913

Taiwan

t 886 2-2716-0338
f 886 2-2516-7500

EUROPE

France

t 0800 916 882
f 0800 918 636

Germany

t 0800 101 1153
f 0800 101 2427

The Netherlands

t 31 20 655 79 28
f 31 20 659 76 73

United Kingdom

t 0800 376 8660
f 0800 279 1117

All Other European
Countries

t 31 (0) 20 659 60 51
f 31 (0) 20 659 76 73

LATIN AMERICA

Brasil
t (55-11) 3089-7419
f (55-11) 3167-0700

Mexico

t (52-81) 8158-8400
f (52-81) 8313-8589

The Corning Family of Brands

CORNING **costar** **cellgro**® **PYREX**® **AXYGEN**® **GOSELIN**™

Corning and Epic are registered trademarks of Corning Incorporated, Corning, NY
Corning Incorporated, One Riverfront Plaza, Corning, NY 14831-0001