

CORNING

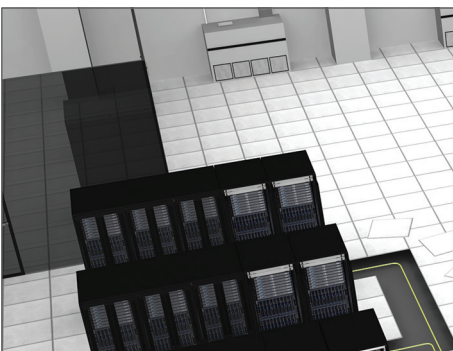
Outside Plant to the Meet-Me-Room

Flexible, modular, and rapid deployments

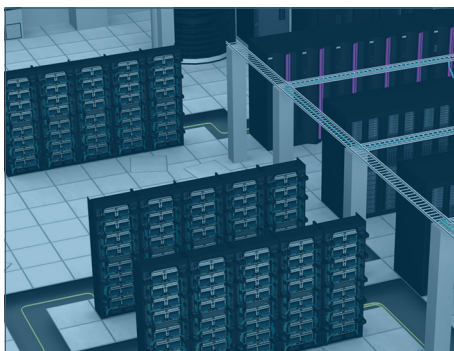
Multitenant Data Centers (MTDCs), also known as colocations, have a variety of requirements when it comes to servicing their end users. Corning assists in offering the precise service, quality, and value expected in a solution. We provide a wide variety of products for outside plant (OSP) and meet-me-room (MMR) applications, enabling:

- Solution flexibility with preterminated, splice, and field-terminated options
- Simplified inventory through a single jumper length in the MMR
- Easy access to individual connections to minimize risk with live circuits
- Port utilization without compromising client security
- Clear-and-simple migration paths to higher-speed technologies
- Meeting the SLA through our global network of authorized distributors

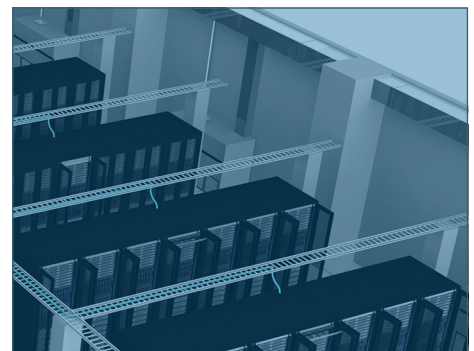
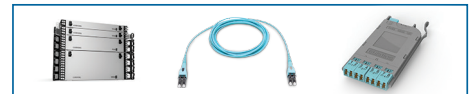
Outside Plant to the Meet-Me-Room



Main Distribution Area



Cage



Field-Installable Solutions

Low installation cost and optimum optical performance

OSP cable often needs to be field terminated and consolidated in the MMR. Carriers and MTDCs use this space to interconnect or cross connect to end users. Often the OSP is already installed and can't be preterminated in a factory. In addition to consolidating the OSP cable, MTDCs with designated splicers for low fiber counts can utilize their assets better with field termination. Field-installable solutions allow:

- The MTDC or carrier to control the speed of deployment
- Determine the type of connectivity needed for the data center network
- Lower wait times through readily available bulk cable from the Corning network of distributors
- Custom, modular, and compatible optical connectivity solutions



Outside-Plant Cables



MiniXtend® and MiniXtend HD Cables with Binderless* FastAccess® Technology

- Available in 12-288 fibers
- Up to 144 fibers in 10 mm ID duct (MiniXtend) and up to 288 fibers in 12 mm ID duct (MiniXtend HD)
- 12 250 μm fibers per 1.4 mm buffer tube (MiniXtend) and 24 200 μm fibers per 1.7 mm buffer tube (MiniXtend HD)



ALTOS® Loose Tube Cable with Binderless* FastAccess Technology and ALTOS Lite Loose Tube Cable with FastAccess Technology

- Available in 12-72 fibers
- Fully waterblocked loose tube, gel-free design
- Reduce the risk of fiber damage during cable access



FREEDM® Loose Tube, Indoor/Outdoor, Gel-Free Cables, Plenum

- Available in 6-72 fibers
- Eliminate the need to transition splice when entering the building and minimize routing restrictions once inside the data center



Corning® RocketRibbon™ Extreme-Density Cable

- Available in 1,728, and 3,456 fibers
- Flexible subunits containing stacks of 288 fibers can be easily routed directly into hardware without furcation

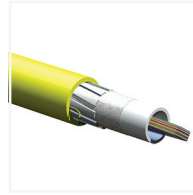
*Corning's proprietary binderless FastAccess® technology refers to the combination of a Corning FastAccess technology jacket with an innovative technology used to bind cable construction through the manufacturing process, eliminating the use of binder yarns and waterblocking tapes.

Inside-Plant Cables



MIC® Unitized Tight-Buffered Cables

- Available in 36-144 fibers
- Compatible with closet connector housing (CCH) pigtail cassettes
- 900 µm buffered fibers



Ribbon Indoor, Gel-Free Cables

- Available in 12-216 fibers
- Up to 48 fibers in an 8.1 mm buffer tube duct
- Maximum attenuation (dB/km): 0.4/0.4/0.3

Connectorization/Hardware



Closet Connector Housing Panels

- Broadest range of fiber count and adapter types
- Provide interconnect or cross-connect capability in a housing at main cross-connects, intermediate cross-connects, telecommunication rooms, or work areas



CCH Pigtailed Cassettes

- Preloaded and prerouted for quick fusion splicing of either individual or ribbon-fiber pigtails
- Enable faster field splicing and easy modular management of connectorization within the housing



UniCam™ High-Performance Toolkit

- Ease-of-use through high-quality tools assembled in a rugged case
- Includes a lightweight, handheld installation tool with an immediate go/no-go feedback signal to indicate proper mating of the field fiber to the fiber stub



UniCam® High-Performance Connectors

- High-precision connectors guarantee exceptional insertion loss: 0.1 dB typical/0.5 dB maximum per connector
- Consistent optical performance through a factory-polished end face



FuseLite® Single-Fiber, Splice-On Connectors

- Insertion loss: 0.15 dB typical/0.3 dB maximum per connector
- Eliminate the need for splice trays and are compatible with leading fusion splicers in the market



FuseLite MTP®-Compatible Splice-On Connectors

- Insertion loss: 0.25 dB typical/0.75 dB maximum per connector
- Ideal for cable-trunk restoration and repair



Optical Splice Enclosure (OSE) Splice Trays

- 288 mass-fusion splices (ribbon)
- 33.0 x 15.2 x 1.3 cm



Closet Connector Housing

- Variety of field-termination options
- Adaptable to use as modular splice housing
- Splices are stored and protected in same footprint



Universal OSEs

- OSE-HD supports up to 864 single-fiber splices or 1,728 mass-fusion splices
- OSE-LD supports up to 432 single-fiber splices or 864 mass-fusion splices

Standard-Density Solutions

Fully integrated, preterminated solutions

In the MMR, standard density and field termination can coexist. Standard-density universal systems are ideal for lower-fiber-counts and minimal patch panels. For low-fiber-counts, the Plug & Play™ solution is the best bet. Standard-density solutions allow:

- Quicker installs through readily accessible housings in our global network of distributors
- Simplified connections to the cage with MTP®-to-LC harness solutions
- Efficient cross-connects and interconnects through LC-to-LC jumpers
- Corning solutions support top-of-rack, middle-of-row, and end-of-row architectures
- Reduce risk by ensuring the correct fiber polarity throughout the entire system with universal polarity



Connectorization/Hardware



Closet Connector Housing Panels

- Broadest range of fiber count and adapter types
- Provide interconnect or cross-connect capability in a housing at main cross-connects, intermediate cross-connects, telecommunication rooms, or work areas



Plug & Play™ Universal Systems Modules

- Provide the interface between the MTP® connector on the trunk and the LC jumpers that will connect directly to the electronics



Plug & Play Universal Systems MTP Adapter Panels

- Simple interface to connect trunk harnesses to trunks and standard trunks to extender trunks



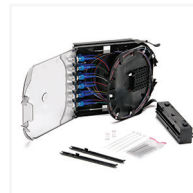
CCH Splice Cassettes

- Eliminate the need for individual splice trays or separate splice housings and allow splicing to be done away from the rack housing in a suitable workspace



CCH Termination Cassettes

- Suitable for use with field-installable connectors
- Economical way to provide modularity, segregation, and added protection and security to your direct-terminated fibers inside any of the four CCH housing options



CCH Pigtailed Cassettes

- Enable faster field splicing and easy modular management of connectorization within the housing
- Preloaded and prerouted for quick fusion splicing of either individual or ribbon fiber pigtailed



Uniboot Jumper in a box

- Jumpers per box range from 30-70 and lengths available from 1-20 m or 3-65 ft
- Maximum attenuation: 0.4 dB/km / 0.4 dB/km / 0.3 dB/km
- Save valuable time, space, and money



Two-Fiber Patch Cords

- Available from 1-250 ft
- Insertion loss: 0.25 dB maximum per connector



EDGE™ Solutions Reverse Polarity Uniboot Duplex Jumpers

- Quick-and-easy conversion from a TIA-568 A-B polarity to a TIA-568 A-A polarity without exposing the fibers or needing any tools
- Insertion loss: 0.25 dB maximum per connector



Closet Connector Housing

- Variety of field-termination options
- Adaptable to use as modular splice housing
- Splices are stored and protected in same footprint



Pretium™ Connector Housings (PCH)

- Designed to maximize density and optimize ease-of-use in Plug & Play Universal Systems applications
- Holds 12 panels per housing



Universal Optical Splice Enclosure

- OSE-HD supports up to 864 single-fiber splices or 1,728 mass-fusion splices
- OSE-LD supports up to 432 single-fiber splices or 864 mass-fusion splices

High-Density Solutions

Optimized for simplicity, attenuation, and total cost

In the MMR, high-density solutions are best for connections between MTDC locations. When managing higher-fiber-counts and numerous patch panels is a priority, the EDGE™ solutions are the appropriate choice. Unique design allows for balance between effective cable management and unprecedented finger access without the need for tools or other accessories. High-density solutions enable:

- The best of high-density fiber management with field-termination capabilities
- Full fiber utilization from the MDA or cage using high-fiber-count cables
- Quicker speed to revenue through high-fiber-count trunks for faster moves, adds, and changes
- Reduced inventory by utilizing the pinned EDGE8® trunks and controlling the cable variants for direct, interconnect, and cross-connect scenarios



Connectorization/Hardware



EDGE™ Universal Modules

- Maximum insertion loss: 1.0 dB and 0.6 dB for ultra-low-loss
- Provides the interface between the MTP® connector on the trunk and the LC duplex jumpers that will connect directly into the cross-connect in the main distribution area



EDGE MTP Adapter Panel

- Enables pay-as-you-grow approach
- Available in two, four, and six adapters per panel



EDGE SE Splice Cassette

- Module insertion loss: 0.5 dB
- Preloaded multisplice cassette with 12-color LC pigtailed for termination of multiple fiber optic cable types



12-Fiber MTP Jumper

- Reduce risk with easy-to-change pinning and polarity in the field
- MTP connector insertion loss: 0.35 dB



EDGE LC Duplex Uniboot to LC Duplex Uniboot Trunks

- Easy to install with strain-relief clips that allow for tool-less installation
- Flexibility with both Plug & Play™ and EDGE housings



EDGE MTP-to-MTP Trunk

- Build up the major backbone of the passive network infrastructure, and enable rapid deployment for your data center facility
- Strain-relief grip and tool-less installation



EDGE HD Housing

- Available in 1U, 2U, and 4U
- Flexibility of installing both EDGE solutions or Plug & Play Universal Systems cable designs



Universal Optical Splice Enclosure

- OSE-LD supports up to 432 single-fiber splices or 864 mass-fusion splices
- OSE-HD supports up to 864 single-fiber splices or 1,728 mass-fusion splices

Notes:

The logo consists of a solid blue square with the word "CORNING" written in white, uppercase, serif font centered within it.

CORNING

Corning Optical Communications LLC • PO Box 489 • Hickory, NC 28603-0489 USA
800-743-2675 • FAX: 828-325-5060 • International: +1-828-901-5000 • www.corning.com/opcomm

Corning Optical Communications reserves the right to improve, enhance, and modify the features and specifications of Corning Optical Communications products without prior notification. A complete listing of the trademarks of Corning Optical Communications is available at www.corning.com/opcomm/trademarks. All other trademarks are the properties of their respective owners. Corning Optical Communications is ISO 9001 certified.
© 2019 Corning Optical Communications. All rights reserved. LAN-2449-AEN / February 2019