

CORNING



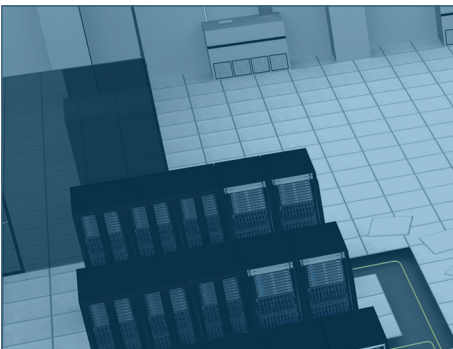
Main Distribution Area

Maximize white space and simplify inventory

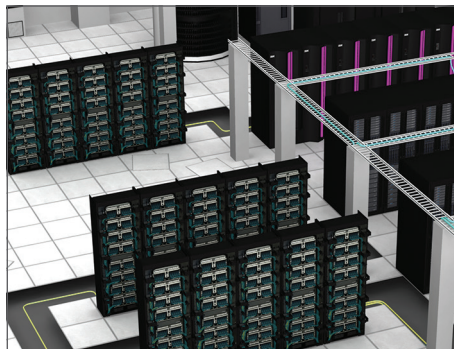
Multitenant Data Centers (MTDCs), also known as colocations, have many options when deciding how to connect the carriers to the end users. The infrastructure in the main distribution area (MDA) affects the ability to cross-connect and how quick it takes to bring a customer online. All this ultimately affects how quickly the MTDC can turn-up their customers and start making revenue. The Corning solutions in the MDA enable:

- Increased white space for customers by utilizing high-density cable management to reduce the MDA footprint
- Simplified jumper inventory through a single jumper in cross-connect frames
- Lowered risk with universal wiring of preterminated components
- Quicker moves, adds, or changes with complete cable management features

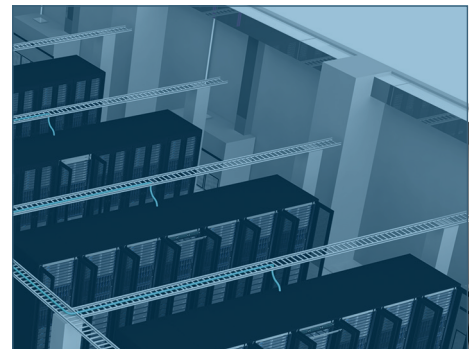
Outside Plant to the Meet-Me-Room



Main Distribution Area



Cage



Field-Installable Solutions

Low installation cost and optimum optical performance

In the MTDC, field termination makes sense for when there are splicers available and they are dealing with low fiber counts. Standard and high-density solutions are both compatible with a wide variety of field-installable solutions.

Field-installable solutions enable:

- Simplified ordering, with the splice cassette containing all the parts and materials required to splice
- Flexibility to allow a mixture of both splice and traditional field connectorization in the same housing
- Solutions to balance ease of field termination and density to facilitate cross connects
- Reduced risk of incorrect pre-engineering by terminating jumpers as needed

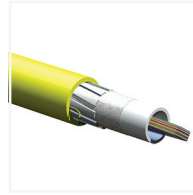


Inside-Plant Cables



MIC® Unitized Tight-Buffered Cables

- Available in 36-144 fibers
- Compatible with closet connector housing (CCH) pigtail cassettes
- 900 µm buffered fibers



Ribbon Indoor, Gel-Free Cables

- Available in 12-216 fibers
- Up to 48 fibers in an 8.1 mm buffer tube duct
- Maximum attenuation (dB/km): 0.4/0.4/0.3

Connectorization/Hardware



Closet Connector Housing Panels

- Broadest range of fiber count and adapter types
- Provide interconnect or cross-connect capability in a housing at main cross-connects, intermediate cross-connects, telecommunication rooms, or work areas



CCH Pigtailed Cassettes

- Preloaded and prerouted for quick fusion splicing of either individual or ribbon-fiber pigtails
- Enable faster field splicing and easy modular management of connectorization within the housing



UniCam™ High-Performance Toolkit

- Ease-of-use through high-quality tools assembled in a rugged case
- Includes a lightweight, handheld installation tool with an immediate go/no-go feedback signal to indicate proper mating of the field fiber to the fiber stub



UniCam® High-Performance Connectors

- High-precision connectors guarantee exceptional insertion loss: 0.1 dB typical/0.5 dB maximum per connector
- Consistent optical performance through a factory-polished end face



FuseLite® Single-Fiber, Splice-On Connectors

- Insertion loss: 0.15 dB typical/0.3 dB maximum per connector
- Eliminate the need for splice trays and are compatible with leading fusion splicers in the market



FuseLite MTP®-Compatible Splice-On Connectors

- Insertion loss: 0.25 dB typical/0.75 dB maximum per connector
- Ideal for cable-trunk restoration and repair



Optical Splice Enclosure (OSE) Splice Trays

- 288 mass-fusion splices (ribbon)
- 33.0 x 15.2 x 1.3 cm



Closet Connector Housing

- Variety of field-termination options
- Adaptable to use as modular splice housing
- Splices are stored and protected in same footprint



Universal OSEs

- OSE-HD supports up to 864 single-fiber splices or 1,728 mass-fusion splices
- OSE-LD supports up to 432 single-fiber splices or 864 mass-fusion splices

Standard-Density Solutions

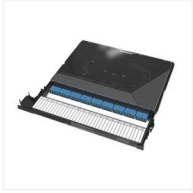
Fully integrated, flexible solutions

In the meet-me-room (MMR), standard-density solutions offer the flexibility to utilize either field-terminated or preterminated methods. Whether the goal is to plan for the prewiring or build as customers come in, Corning solutions allow both blueprints to exist. The standard density also allows higher utilization of the white space, which ultimately affects how much revenue a MTDC can generate. Standard-density solutions allow:

- Meet SLA with housings available as fast as 24 hours at more than 400 distributor locations
- Simplify orders with housing that readily accepts splice cassettes without the use of tools or additional parts
- Reduce risk with splice cassettes that allow access to connectors from the front or the rear
- Quick time-to-install through tool-less mounting of 4U CCH housings



Connectorization/Hardware



Centrix™ Splice Cassette

- 18 LC duplex/UPC adapters
- Multiple tube entry from the rear or both sides on the cassette
- Maximum insertion loss: 0.5 dB



Centrix Module

- 36 port LC UPC front facings and pinned
- 3 MTP® adapters



Centrix Service Bracket

- The frame design provides optimized routing paths for jumpers
- A single jumper length for an in-frame, cross-connect network design reduces jumper inventory



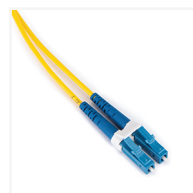
Frame-Mounted Work Shelf

- Centrix platform supports up to 4,320 LC ports per standard 7 ft/2,137 mm frame



EDGE™ Trunk Harness

- Facilitates an interconnect point when the electronics are located away from the cross connect
- Strain-relief grip and tool-less installation



Two-Fiber Jumper

- Available from 1-250 ft
- Insertion loss: 0.25 dB maximum per connector



EDGE Solutions Reverse Polarity Uniboot Duplex Jumpers

- Quick and easy conversion from a TIA-568 A-B polarity to a TIA-568 A-A polarity without exposing the fibers or needing any tools
- Insertion loss: 0.25 dB maximum per connector



Uniboot Jumper in a box

- Jumpers per box range from 30-70
- Lengths available 1-20 m or 3-65 ft
- Save valuable time, space, and money



Centrix Housing

- Available in 1U, 2U, and 4U
- 4U Centrix housing holds up to 12 cassettes with up to 432 LC fiber ports
- Mounting brackets for installation in 19-in frames are provided with each housing



Centrix Rear Cable Access Frame, 7 ft

- Centrix platform supports up to 4,320 LC or 2,880 SC connector ports per standard 7 ft/2,137 mm frame
- Isolation ground pad kit available for installations without a raised floor

High-Density Solutions

Optimized for simplicity, attenuation, and total cost

For the MTDCs looking to maximize white space and revenue, high-density solutions are the answer. Building out from the MMR to the MDA using preterminated solutions allows the MTDC to save on the total cost while also reducing the amount of time it would normally take to bring a customer online. Once a customer comes in, all that is left is the run from the MDA to the cage. High-density solutions allow:

- Offsetting home run rollouts through smaller harness jumpers in the cage
- Meet SLA by using prebuilt infrastructure to the intermediate distribution frames (IDF) and MTP® or LC assemblies as needed
- Peace of mind knowing that all current and future solutions will be compatible with the EDGE™ housings
- Make the most of the rentable white space by using the high-density solutions

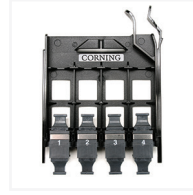


Connectorization/Hardware



EDGE™ Universal Modules

- Maximum insertion loss: 1.0 dB and 0.6 dB for ultra-low loss
- Provides the interface between the MTP® connector on the trunk and the LC duplex jumpers that will connect directly into the cross-connect in the main distribution area



EDGE MTP Adapter Panel

- Enables pay-as-you-grow approach
- Available in two, four, and six adapters per panel



EDGE SE Splice Cassette

- Module insertion loss: 0.5 dB
- Preloaded multisplice cassette with 12 color LC pigtailed for termination of multiple fiber optic cable types



12-Fiber MTP Jumper

- Reduce risk with easy-to-change pinning and polarity in the field
- MTP connector insertion loss: 0.35 dB



EDGE LC Duplex Uniboot to LC Duplex Uniboot Trunks

- Easy to install with strain-relief clips that allow for tool-less installation
- Flexibility with both Plug & Play™ and EDGE housings



EDGE MTP-to-MTP Trunk

- Build up the major backbone of the passive network infrastructure, and enable rapid deployment for your data center facility
- Strain-relief grip and tool-less installation



EDGE HD Housing

- Available in 1U, 2U, and 4U
- Flexibility of installing both EDGE solutions or Plug & Play Universal Systems cable designs



Universal Optical Splice Enclosure

- OSE-LD supports up to 432 single-fiber splices or 864 mass-fusion splices
- OSE-HD supports up to 864 single-fiber splices or 1,728 mass-fusion splices

Notes:

The logo consists of a solid blue square with the word "CORNING" written in white, uppercase, serif font, centered within the square.

CORNING

Corning Optical Communications LLC • PO Box 489 • Hickory, NC 28603-0489 USA
800-743-2675 • FAX: 828-325-5060 • International: +1-828-901-5000 • www.corning.com/opcomm

Corning Optical Communications reserves the right to improve, enhance, and modify the features and specifications of Corning Optical Communications products without prior notification. A complete listing of the trademarks of Corning Optical Communications is available at www.corning.com/opcomm/trademarks. All other trademarks are the properties of their respective owners. Corning Optical Communications is ISO 9001 certified.
© 2019 Corning Optical Communications. All rights reserved. LAN-2358-AEN / February 2019