

CORNING

Class A Office: South Central, USA

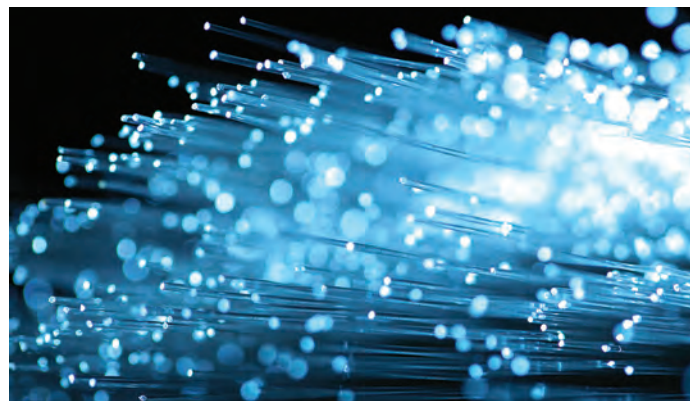
Business success starts with reliable and forward-thinking connectivity

Background

- New 300,000-square-foot, 35-floor luxury office building.
- New headquarters location for two corporations.

Meet the Project Leads

- *Steve*, real estate owner/developer, is responsible for leading and managing design support, construction, and financial outlook.
- Petroleum Corporate Headquarters is the joint partner of the real estate agency and the future tenant of 125,000 square feet within the building.



Challenge

The key stakeholders were tasked with meeting the requirements of both current and future tenants, while providing reliable cellular coverage and connectivity throughout the building, aligning with budget, and demonstrating a positive ROI for seamless future digital transformations.

Meeting the End Users' Needs

Joint Partner and Tenant Requirements:

Petroleum Corporate Headquarters

- Typical LAN infrastructure and cellular coverage.
- High-bandwidth speed and coverage for business operations.
- Demonstrated cost savings with a long-term investment.
- Neutral platform to grow with connectivity demands.
- Support future occupancy of commercial office space.

Future/Core Tenant Requirements:

Global Financial Corporation

- Relocation of 100+ employees, plus future occupancy.
- High-performing Wi-Fi for reliable coverage and automated services.
- Security systems.
- Video conferencing.
- Access control for office maintenance.
- Secure parking.

IT Division (Joint Partnership) Requirements:

- Ease of maintenance and operation of network.
- Reliable cellular and Wi-Fi coverage.
- Increased uptime.



Solution

The Corning® Optical Network Evolution (ONE™) Solution optimized optical fiber in the horizontal and enabled a simple converged network, which can save up to 30 percent initially and up to 50 percent on future upgrades.

A fiber-deep passive optical network (PON) enabled Wi-Fi, security, building management systems, distributed antenna systems (DAS), and IPTV. The ONE solution met the end users' need for high-speed connectivity, as well as the operational and capital cost-saving requirements of the key decision makers.

 See What's Possible in Your Network

CORNING

Corning Optical Communications LLC • PO Box 489 • Hickory, NC 28603-0489 USA
800-743-2675 • FAX: 828-325-5060 • International: +1-828-901-5000 • www.corning.com/opcomm

Corning Optical Communications reserves the right to improve, enhance, and modify the features and specifications of Corning Optical Communications products without prior notification. A complete listing of the trademarks of Corning Optical Communications is available at www.corning.com/opcomm/trademarks. All other trademarks are the properties of their respective owners. Corning Optical Communications is ISO 9001 certified. © 2018 Corning Optical Communications. All rights reserved. LAN-2336-AEN / May 2018