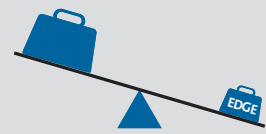


## Corning's Data Centre Solutions Provide Three Tiers of Value

### 1. EDGE™ SOLUTIONS VALUE



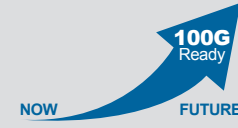
BEST-IN-CLASS  
HIGH-DENSITY  
SOLUTION



TOOL-LESS  
INSTALLATION



SUPERIOR  
FINGER ACCESS



SCALABLE AND  
MODULAR  
COMPONENTS

### 2. BASE-8 VALUE



SUPERIOR  
NETWORK  
SCALABILITY



RISK  
MITIGATION



IMPROVED LINK  
PERFORMANCE

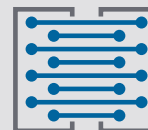


STREAMLINED  
PORT MAPPING

### 3. EDGE8™ SOLUTIONS VALUE



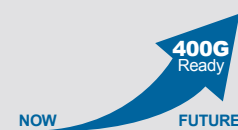
REDUCE  
PATCH CORD  
COMPLEXITY



ELIMINATE  
STRANDED  
CABLING ASSETS



PREPARE  
FOR RAPIDLY  
CHANGING  
TECHNOLOGY



PLAN FOR  
NETWORK  
CHANGES



TRIPLE YOUR  
SWITCH PORT  
DENSITY

## We know data centres inside out, but you know your data centre best.

We are ready when you are to start working together to solve your tough data centre challenges. Corning offers the services and support required to design, implement, and maintain your network.

- Award-winning One Call Gets All™ customer care
- 24/7 technical support line staffed by engineers and technicians
- Design assistance and proposal preparation, including: needs analysis, schematic drawings, cable routing recommendations, design models, and bills of materials
- On-site technical assistance with your data centre installation
- Network of Preferred Installers (NPI) programme – certified installers can offer a 25-year extended warranty on our solutions
- Unsurpassed global manufacturing footprint for optical structured cabling systems

CORNING

© 2017 Corning Optical Communications.  
All rights reserved. LAN-1935-BEN / June 2017

## INFINITE POSSIBILITIES CORNING'S DATA CENTRE SOLUTIONS

CORNING

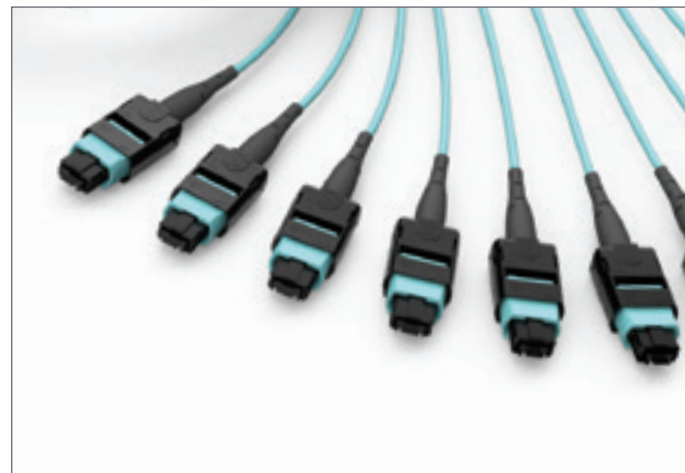
## Getting a Data Centre Up and Running Is No Small Task.

Keeping a data centre fully optimised, eliminating latency, reducing downtime, maintaining compliance with continually evolving standards at the ever-increasing transmission speeds required to keep your business competitive – now that's a challenge!

At Corning these are just the kinds of challenges we like to solve. We get data centres. We set the bar for structured cabling in the data centre back in 2009 when we introduced EDGE solutions, the industry's first pre-terminated optical cabling system specifically designed for the data centre environment.

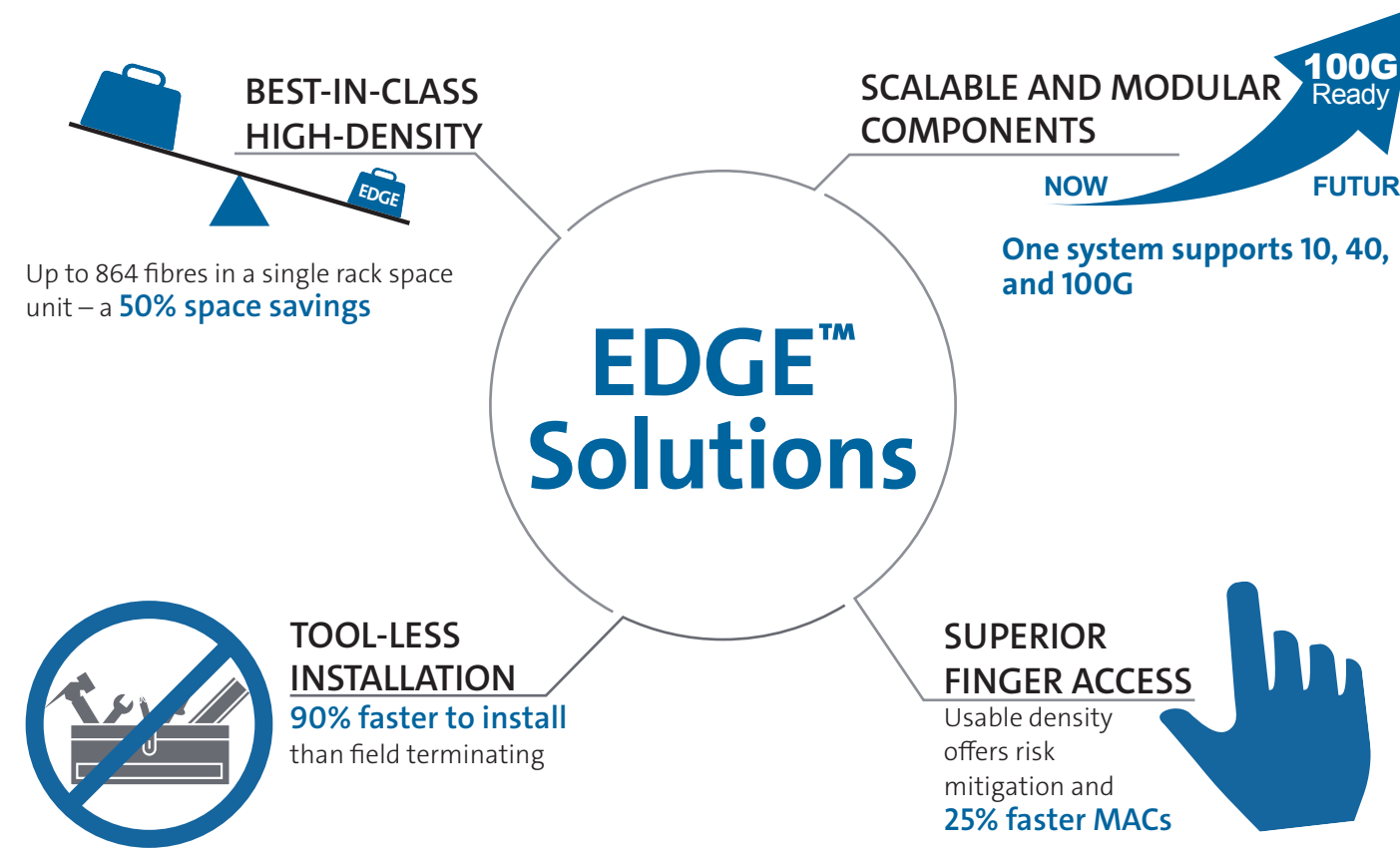
### A SOLUTION FOR EVERY DATA CENTRE

Because every data centre and SAN is unique, EDGE™ and EDGE8™ solutions provide a family of modular, tip-to-tip connectivity options that are uniquely configurable. Each includes cabling, housings, modules, panels, and patch cables. And each offers faster, simpler installation, higher density, superior cable management, easier moves, adds, and changes (MAC), and more flexible migration paths than competing data centre solutions. But each solution set supports a different approach to data centre management.



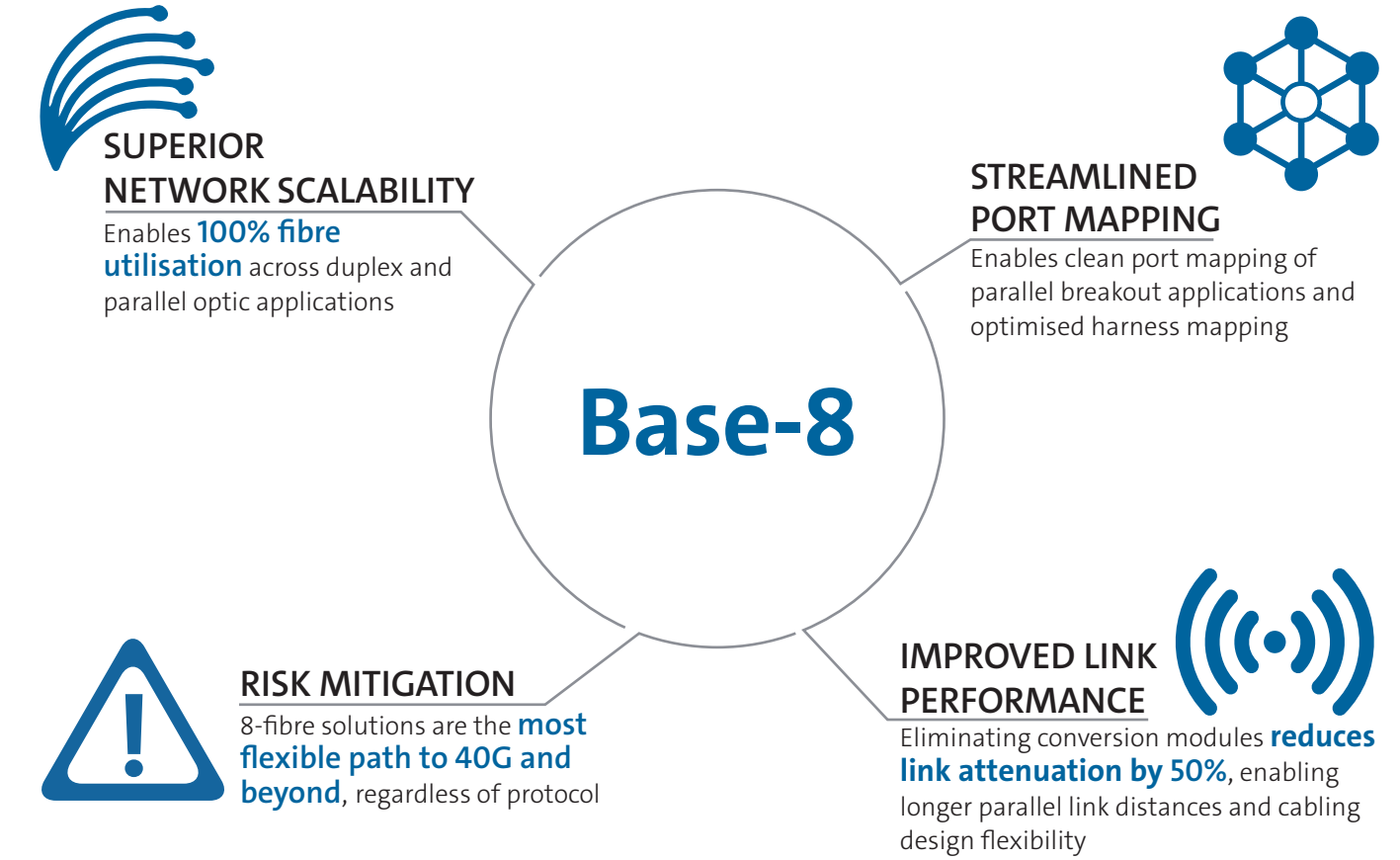
## Corning's EDGE™ Solutions

While EDGE solutions continue to evolve, the foundation that they were designed upon – a fundamental understanding of the pain points inherent in managing a data centre – has not. Density, network uptime, speed, simplicity and a clear migration path to meet future requirements – these are all still critical considerations in any data centre environment. EDGE solutions offer:



## Why Base-8 and Why Now? The Case for Base-8

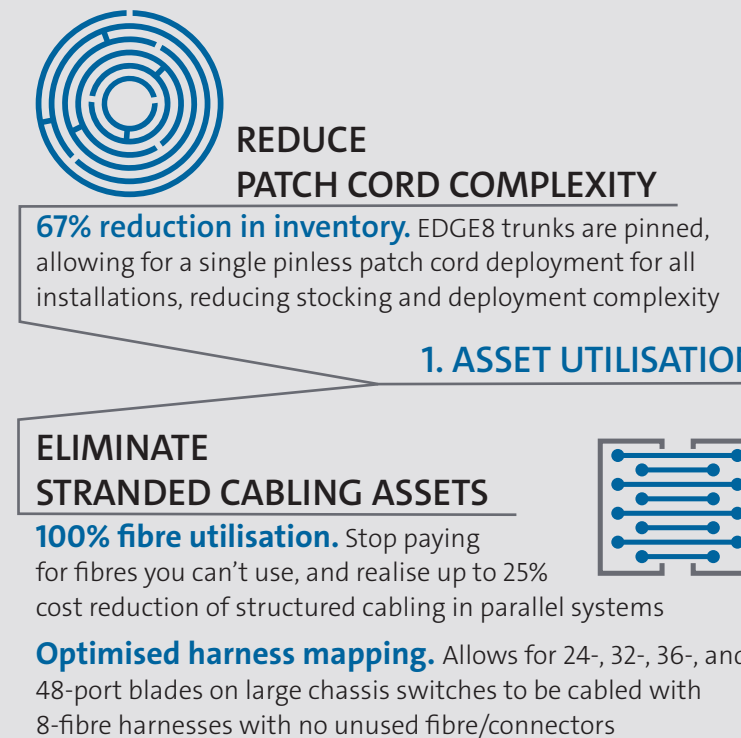
Technology road maps of transceiver, switch, server, and storage makers clearly illustrate that transmission speeds ranging from 10 to 400G will be based on either 2- or 8-fibre connectivity solutions. Base-8 connectivity provides the most future-ready solution to support 400G transmission requirements, but you don't need to wait for future value. The benefits are clear today:



## Our Award-Winning EDGE8™ Solutions – Because Sometimes Less Really Is More

EDGE8 solutions combine all of the density, simplicity, scalability, and modularity of Corning's EDGE solutions with the superior network scalability, improved link performance, and 100% fibre utilisation of a Base-8 design.

Corning's EDGE8 solutions further the value of Base-8 connectivity by providing outstanding value in four critical areas:



## EDGE8™ Solutions

2. TECHNOLOGY ADOPTION

**PREPARE FOR RAPIDLY CHANGING TECHNOLOGY**  
Eliminate conversion modules to achieve cost and link-loss savings. **50% link-loss improvement** + improved MTP® connector performance + improved module loss (0.35 dB) = extended reach

3. RISK AVOIDANCE

**PLAN FOR NETWORK CHANGES**  
EDGE8 solutions provide the **simplest path from 10 to 400G**

4. HIGH-DENSITY 10G

**TRIPLE YOUR SWITCH PORT DENSITY**  
Parallel ports running in breakout mode translate to savings in power, cost, and rack space

400G Ready  
NOW FUTURE