

Two-Fiber Patch Cords

CORNING

Features and Benefits

Superior Performance Testing

Every termination is tested to ensure the highest in network performance

State-Of-The-Art Manufacturing Processes

Corning proprietary manufacturing processes and advanced technology result in unsurpassed product consistency

Corning advantage

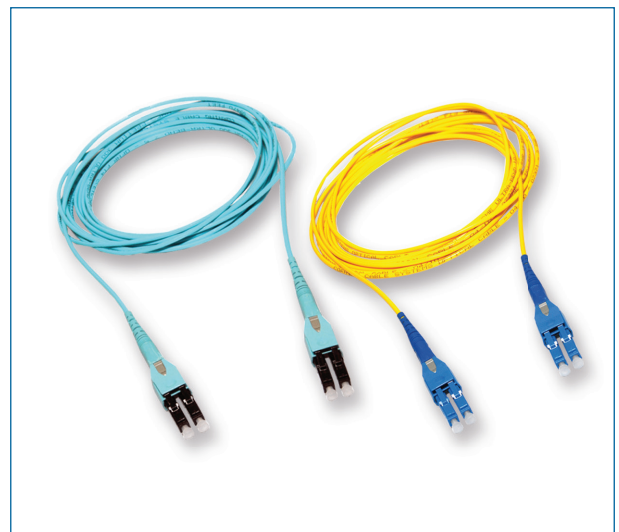
Integrated developer and manufacturer of cable, connectors and fiber to ensure overall patch cord performance

Corning offers the most complete line of connectors and factory-terminated cables, from single-fiber patch cords to high-fiber-count assemblies. As the industry's leading supplier of cable assemblies, Corning's state-of-the-art manufacturing process ensures unsurpassed connector performance with products that meet or exceed all industry standards for reflectance and insertion loss. Highly trained and qualified associates thoroughly inspect the incoming fibers and ferrules, assemble and polish them using a carefully monitored and controlled process. The assemblies undergo rigorous performance testing to ensure optimal quality in every connector.

Corning's preterminated assemblies use only high-quality Corning optical fibers to ensure total performance quality.



LC Duplex to LC Duplex Patch Cords
| Photo CRR3409



Reverse Polarity Uniboosts
| Photo LAN2217-2218

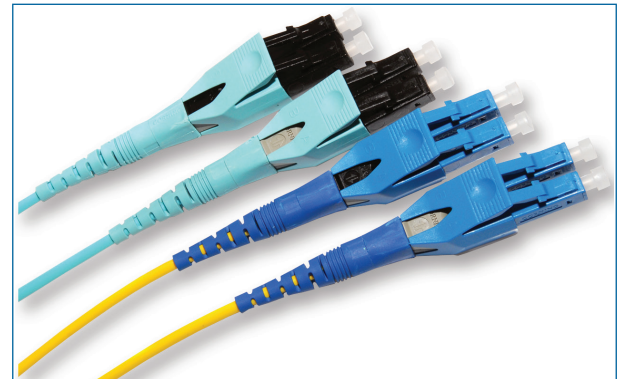
CORNING

Two-Fiber Patch Cords

CORNING

Reverse Polarity Uniboot Duplex Patch Cords

Reverse Polarity Uniboot Duplex patch cords allow for the quick and easy conversion from a TIA-568 A-B polarity to a TIA-568 A-A polarity without exposing the fibers or needing any tools. This patch cord comes with a straight-through polarity from the factory, but you can convert it to a flipped patch cord with no tools. This uniboot design allows one cable to carry both fibers, reducing patch cord bulk when routing.

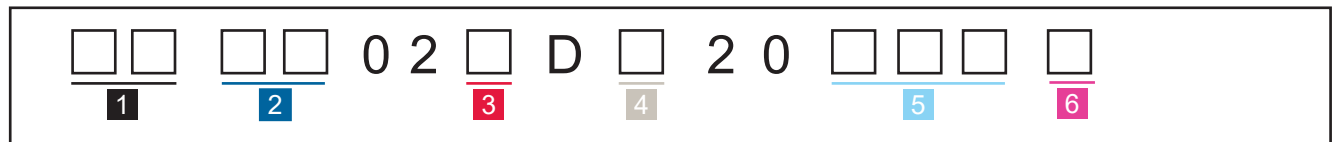


Reverse Polarity Uniboot Duplex Patch Cords
| Photo LAN2223

Specifications

LC Uniboot Patch Cord Specifications			
Connector	Connector Code	Max. Attenuation (dB)	Return Loss (dB)
MM LC Uniboot	79	0.5	≤26
SM LC Uniboot	78	0.5	≤55

Ordering Information



- 1** Select connector one type.
- 79 = Multimode LC Uniboot (OM3/OM4)
 - 78 = Single-mode LC UPC Uniboot (OS2)

- 2** Select connector two type.
- 79 = Multimode LC Uniboot (OM3/OM4)
 - 78 = Single-mode LC UPC Uniboot (OS2)

- 3** Select fiber type.
- T = 50 μm multimode (OM3)
 - Q = 50 μm multimode (OM4)
 - G = Single-mode Ultra (OS2)

- 4** Select flame rating.
- 1 = Riser
 - 8 = Plenum

- 5** Select length.
- 001-250 (tip-to-tip)

- 6** Select unit of measure.
- F = Feet
 - M = Meters

Two-Fiber Patch Cords

CORNING

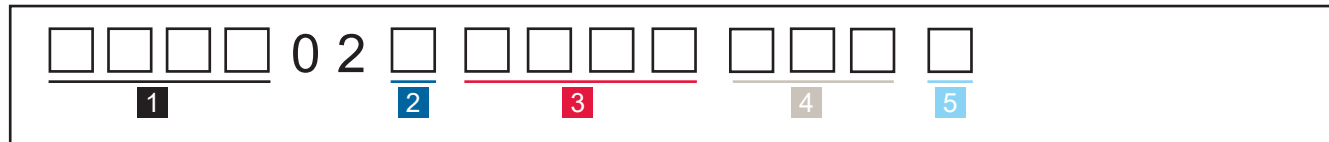
Duplex Patch Cords

Corning patch cords are ordered using five easy steps. The steps involve the selection of connector(s), fiber type, cable, length and unit of measure. The format/steps are listed below.

Specifications

Two-Fiber Patch Cord Specifications				
Fiber Type	Connector	Connector Code	Max. Attenuation (dB)	Return Loss (dB)
Multimode	LC	05	0.4	≤ 26
	SC	57	0.4	≤ 26
	ST® compatible	50	0.4	≤ 26
Single-mode	LC	04	0.25	≤ 55
	SC	72	0.25	≤ 55
	ST compatible	61	0.25	≤ 55

Ordering Information



1 Select connector code.

00 = No connectors (use when ordering a pigtail)

Multimode

- 03 = LC simplex
- 05 = LC duplex
- 39 = SC simplex
- 50 = ST® compatible
- 57 = SC duplex

See Note 1.

Single-mode

- 02 = LC UPC simplex
- 04 = LC UPC duplex
- 22 = LC APC simplex
- 44 = SC APC simplex
- 58 = SC UPC simplex
- 61 = ST compatible UPC
- 72 = SC UPC duplex

3 Select cable type.

- 5120 = Riser 2.0 mm
- 5820 = Plenum 2.0 mm
- 5116 = Riser 1.6 mm
- 5816 = Plenum 1.6 mm
- 5112 = Riser 1.2 mm (SMF LBL only)

4 Select cable assembly length.

- 001-250 (tip-to-tip)

2 Select fiber type.

- T = 50 μm multimode (OM3)
- Q = 50 μm multimode (OM4)
- K = 62.5 μm multimode (OM1)
- G = SMF Ultra (OS2)
- U = SMF LBL (OS2) (1.2 mm only)

5 Select unit of measure.

- F = Feet
- M = Meters

Notes:

1) Select connector code based on type of adapter used at the patch panel and the electronic interface connector. Always use the lowest code first when constructing the part number.

Two-Fiber Patch Cords

CORNING

Jumper in a Box

Jumper in a box is an innovative packaging solution designed to fulfill your needs of organization, convenience, and efficiency. It includes a self-tracking inventory system and bold, color-coded part identification at a glance. Jumpers are available in a wide range of configurations (see below for full details).

Features and Benefits

Bags that are connected with individual jumpers in an easy payout

Easy inventory management and inventory control

Easy to identify box labeling of jumper type/QR code

Quick visual identification makes it easy to find the correct jumper very quickly, type and length

Identifier that lets customer know it is time to reorder

Helps control inventory and reduces risk of running out of product

Reduced individual jumper packaging

Less waste and less time to unpackage

Sequential number of each jumper in the payout box

Helps control inventory



Two-Fiber Patch Cords

CORNING

LC Duplex Reverse Polarity Uniboot Jumper in a Box

Ordering Information

<input type="text"/>	<input type="text"/>	<input type="text"/>	<input type="text"/>	-	<input type="text"/>	<input type="text"/>	<input type="text"/>	-	<input type="text"/>	<input type="text"/>	<input type="text"/>	-	<input type="text"/>	<input type="text"/>	<input type="text"/>	<input type="text"/>
1					2				3				4		5	

1 Select connector code.

Multimode

7979 = LC PC Uniboot

Single-mode

7878 = LC UPC Uniboot

3 Select quantity. Quantity per box is determined by length.

B70 = 1-5 m or 1-16 ft

B50 = 6-10 m or 17-35 ft

B40 = 11-15 m or 36-52 ft

B30 = 16-20 m or 53-66 ft

5 Select unit of measure.

F = Feet

M = Meters

2 Select cable and fiber type.

OM4 = DFX 250 R MM OM4

OM3 = DFX 250 R MM OM3

OS2 = DFX 250 R SM OS2

ClearCurve

4 Select jumper length*.

01 - 20 meters

01 - 65 feet

*Maximum length is 20 m/65 ft

Two-Fiber Patch Cords

CORNING

LC Duplex Jumper in a box

Ordering Information

<input type="text"/>	<input type="text"/>	<input type="text"/>	<input type="text"/>	-	<input type="text"/>	<input type="text"/>	<input type="text"/>	-	<input type="text"/>	<input type="text"/>	<input type="text"/>	-	<input type="text"/>	<input type="text"/>	<input type="text"/>	<input type="text"/>
1					2				3				4		5	

1 Select connector code.

Multimode Duplex

0505 = LC PC

Single-mode Duplex

0404 = LC UPC

2 Select cable and fiber type.

ZR4 = 2.0 mm Zipcord R MM OM4

ZR3 = 2.0 mm Zipcord R MM OM3

ZR2 = 2.0 mm Zipcord R SM OS2
ClearCurve

ZR1 = 2.0 mm Zipcord R MM OM1

3 Select quantity. Quantity per box is determined by length.

B70 = 1 m or 3 ft

B60 = 2 m or 4-7 ft

B50 = 3-5 m or 8-16 ft

B40 = 6-8 m or 17-26 ft

B30 = 9-10 m or 27-33 ft

5 Select unit of measure.

F = Feet

M = Meters

4 Select jumper length*.

01 - 10 meters

01 - 33 feet

*Maximum length is 10 m/33 ft

CORNING

Two-Fiber Patch Cords



SC Duplex Jumper in a box

Ordering Information

<input type="text"/>	<input type="text"/>	<input type="text"/>	<input type="text"/>	-	<input type="text"/>	<input type="text"/>	<input type="text"/>	-	<input type="text"/>	<input type="text"/>	<input type="text"/>	-	<input type="text"/>	<input type="text"/>	<input type="text"/>	<input type="text"/>
1				2				3				4		5		

1 Select connector code.

Multimode Duplex

5757 = SC PC

Single-mode Duplex

7272 = SC UPC

2 Select cable and fiber type.

ZR4 = 2.0 mm Zipcord R MM OM4

ZR3 = 2.0 mm Zipcord R MM OM3

ZR2 = 2.0 mm Zipcord R SM OS2

ClearCurve

ZR1 = 2.0 mm Zipcord R MM OM1

3 Select quantity. Quantity per box is determined by length.

B60 = 1-2 m or 1-7 ft

B50 = 3-4 m or 8-13 ft

B40 = 5-6 m or 14-20 ft

B35 = 7-8 m or 21-26 ft

B30 = 9-10 m or 27-33 ft

5 Select unit of measure.

F = Feet

M = Meters

4 Select jumper length*.

01 - 10 meters

01 - 33 feet

*Maximum length is 10 m/33 ft



Corning Optical Communications LLC • PO Box 489 • Hickory, NC 28603-0489 USA

800-743-2675 • FAX: 828-325-5060 • International: +1-828-901-5000 • www.corning.com/opcomm

A complete listing of the trademarks of Corning Optical Communications is available at www.corning.com/opcomm/trademarks.

All other trademarks are the properties of their respective owners. Corning Optical Communications is ISO 9001 certified.

© 2019 Corning Optical Communications. All rights reserved.