

Corning® Synthegel™ 3D Matrix Kits

Synthetic peptide hydrogels for physiologically relevant spheroids and 3D hiPSC culture

CORNING

Corning Synthegel 3D matrix kits are defined, self-healing synthetic peptide hydrogel bio-tools for culturing many different types of cells including cancer and stem cells, in a 3D format with robustness and convenience. The Synthegel 3D matrix kits provide negligible variability and a more controlled substrate for *in vivo*-like 3D cell culture. This platform is a critical tool that is useful for cancer research, stem cell research and drug screening in a 3D format. The Synthegel 3D matrix platform supports culture of human induced pluripotent stem cells (hiPSCs) in a 3D embedded format or in an encapsulation for suspension format. It also supports the culture of physiological cancer spheroids within a defined, tunable, and synthetic peptide matrix devoid of acidic or chilled conditions.

The 3D matrix peptide solution is designed to create an extracellular matrix mimicking hydrogel in one simple mixing step. The Synthegel 3D matrix solution is formulated in standard cell culture media at neutral pH and is stable at room temperature. The hydrogel formation can be initiated by directly mixing the peptide solution with the cross-linking agent along with any cell suspension without extra steps. Cultured cells can be clearly imaged and are easy to harvest. The Synthegel 3D matrix kits provide reproducible results and work with standard biological methodologies.

Features

- ▶ Ideal for formation and growth of physiologically relevant cancer spheroids
- ▶ Allows 3D culture and passaging of hiPSCs in embedded and suspension conditions
- ▶ The hiPSC Grow Mix supplement provides a complete culture environment for hiPSC 3D culture
- ▶ Purified synthetic peptide in neutral pH
- ▶ Matrix rigidity is tunable by altering the peptide concentration
- ▶ Fast hydrogel formation (5 to 30 min.)
- ▶ Works with standard cell culture methodologies



Corning Synthegel 3D hiPSC Matrix Kit

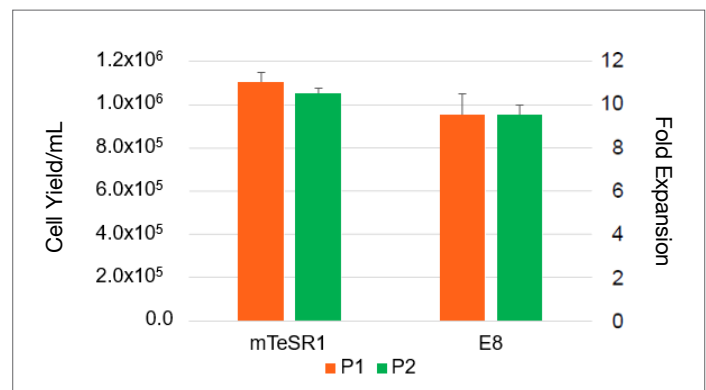
The Corning Synthegel 3D hiPSC matrix kit is a powerful tool for the physiological formation of 3D hiPSC spheroids *in vitro*. hiPSC spheroids maintain high viability, pluripotency and differentiation potential based on multiple biomarkers. The kit consists of a vial of Synthegel 3D hiPSC peptide nanofiber solution and a vial of Synthegel X-Link solution. Also required is a vial of lyophilized Synthegel 3D hiPSC Grow Mix.

Ordering Information

Products may not be available in all markets.

Cat. No.	Description	Qty/Pk	Qty/Cs
354787	Corning Synthegel 3D hiPSC matrix kit (10 mL)	1	1 kit
354792	Corning Synthegel 3D hiPSC Grow Mix (1 mg)	1	1

hiPSC 3D Culture in Corning Synthegel 3D hiPSC Matrix



Human foreskin fibroblast-derived iPSC were cultured in Corning Synthegel 3D hiPSC matrix for 5 days. Cells were seeded at 4×10^5 cell/mL and cultured with mTeSR™1 or Essential 8™ media at 0.5% and 0.3% w/v Synthegel hiPSC matrix, respectively. Data are shown as means \pm standard deviations (SDs).

Corning® Synthegel™ Spheroid Matrix Kit

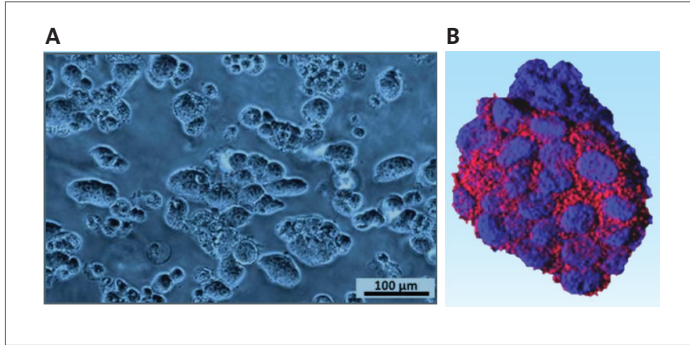
The Corning Synthegel Spheroid matrix kit is a research tool for high content 3D self-assembled biologically formed spheroid cultures with more accurate *in vivo* predictions. The matrix has a higher gel strength and optimal cytocompatibility for spheroid culture. The kit consists of a vial of Spheroid matrix peptide nanofiber solution and a vial of Synthegel X-Link solution.

Ordering Information

Product may not be available in all markets.

Cat. No.	Description	Qty/Pk	Qty/Cs
354789	Corning Synthegel Spheroid matrix kit (10 mL)	1	1 kit

Cancer Spheroids Cultured in Corning Synthegel Spheroid Matrix



(A) MCF-7 breast cancer cells cultured for 5 days in Corning Synthegel Spheroid matrix form physiological spheroids. (B) Immunofluorescent image of MCF-7 cells cultured for 5 days. Red indicates actin and blue indicates DAPI-stained nuclei.

Corning Synthegel hiPSC Suspension Matrix Kit

Corning Synthegel hiPSC suspension matrix kit is a powerful bio-tool for large-scale manufacturing of physiological 3D hiPSC spheroids in a lab setting. It is incredibly easy for cell encapsulation and spheroid isolation. After harvesting, spheroids can be used directly for various downstream tasks such as drug screening, bioprinting for tissue engineering, and somatic cells differentiation. The kit consists of a vial of Synthegel hiPSC suspension matrix, a nanofiber solution for 3D suspension culture and, a vial of Synthegel X-Link solution. Also required is a vial of lyophilized Synthegel 3D hiPSC Grow Mix.

Ordering Information

Products may not be available in all markets.

Cat. No.	Description	Qty/Pk	Qty/Cs
354791	Corning Synthegel hiPSC suspension matrix kit (16 mL)	1	1 kit
354792	Corning Synthegel 3D hiPSC Grow Mix (1 mg)	1	1

Warranty/Disclaimer: Unless otherwise specified, all products are for research use or general laboratory use only.* Not intended for use in diagnostic or therapeutic procedures. Not for use in humans. These products are not intended to mitigate the presence of microorganisms on surfaces or in the environment, where such organisms can be deleterious to humans or the environment. Corning Life Sciences makes no claims regarding the performance of these products for clinical or diagnostic applications. *For a listing of US medical devices, regulatory classifications or specific information on claims, visit www.corning.com/resources.

Corning's products are not specifically designed and tested for diagnostic testing. Many Corning products, though not specific for diagnostic testing, can be used in the workflow and preparation of the test at the customers discretion. Customers may use these products to support their claims. We cannot make any claims or statements that our products are approved for diagnostic testing either directly or indirectly. The customer is responsible for any testing, validation, and/or regulatory submissions that may be required to support the safety and efficacy of their intended application.

CORNING

Corning Incorporated
Life Sciences

www.corning.com/lifesciences

NORTH AMERICA
t 800.492.1110
t 978.442.2200

ASIA/PACIFIC
Australia/New Zealand
t 61 427286832

Chinese Mainland
t 86 21 3338 4338

India
t 91 124 4604000

Japan
t 81 3-3586 1996

Korea
t 82 2-796-9500

Singapore
t 65 6572-9740

Taiwan
t 886 2-2716-0338

EUROPE
CSEurope@corning.com

France
t 0800 916 882

Germany
t 0800 101 1153

The Netherlands
t 020 655 79 28

United Kingdom
t 0800 376 8660

All Other European Countries
t +31 (0) 206 59 60 51

LATIN AMERICA
grupoLA@corning.com

Brazil
t 55 (11) 3089-7400

Mexico
t (52-81) 8158-8400